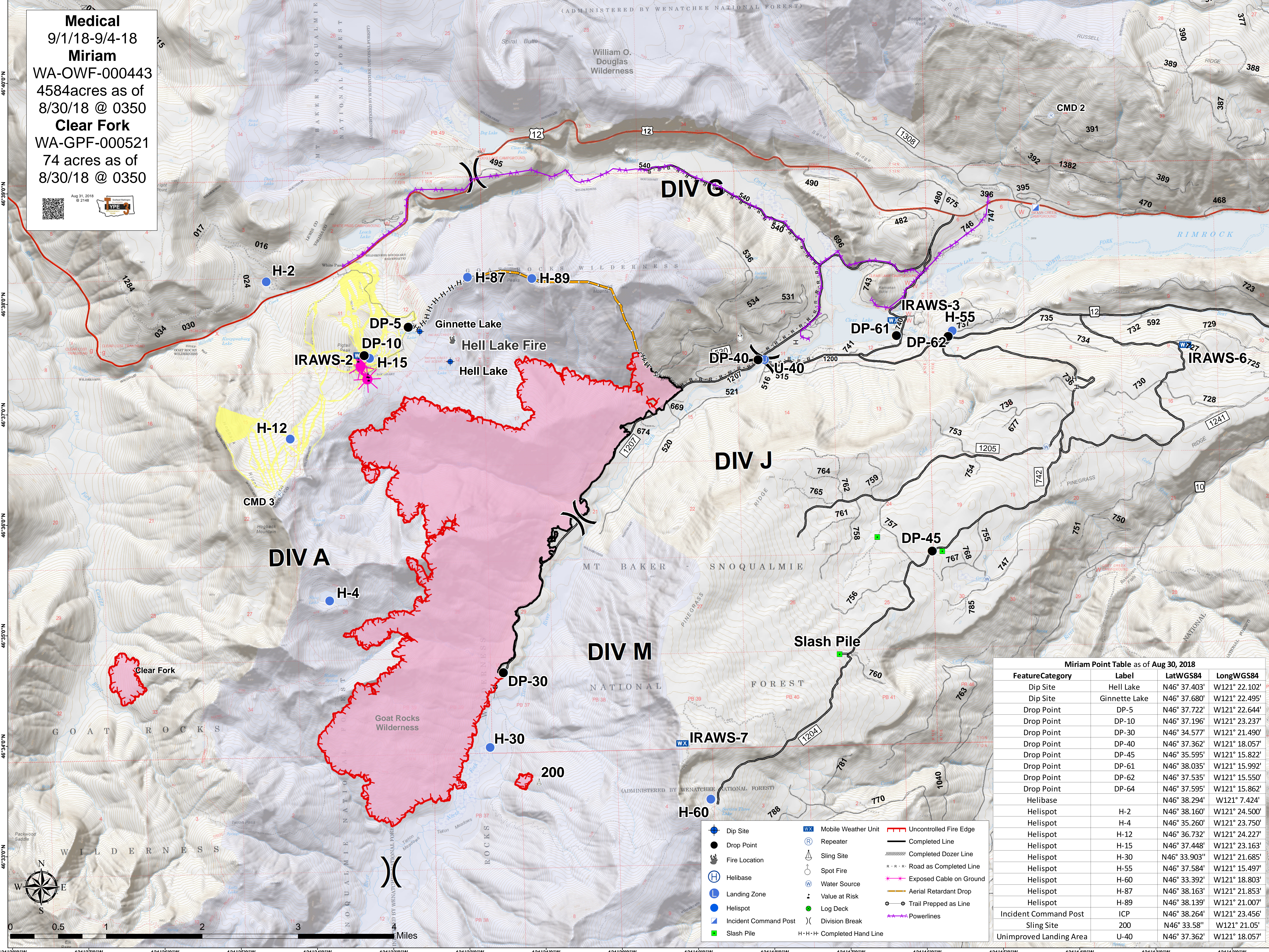


Medical
 9/1/18-9/4-18
Miriam
 WA-OWF-000443
 4584acres as of
 8/30/18 @ 0350
Clear Fork
 WA-GPF-000521
 74 acres as of
 8/30/18 @ 0350



Miriam Point Table as of Aug 30, 2018

FeatureCategory	Label	LatWGS84	LongWGS84
Dip Site	Hell Lake	N46° 37.403'	W121° 22.102'
Dip Site	Ginnette Lake	N46° 37.680'	W121° 22.495'
Drop Point	DP-5	N46° 37.722'	W121° 22.644'
Drop Point	DP-10	N46° 37.196'	W121° 23.237'
Drop Point	DP-30	N46° 34.577'	W121° 21.490'
Drop Point	DP-40	N46° 37.362'	W121° 18.057'
Drop Point	DP-45	N46° 35.595'	W121° 15.822'
Drop Point	DP-61	N46° 38.035'	W121° 15.992'
Drop Point	DP-62	N46° 37.535'	W121° 15.550'
Drop Point	DP-64	N46° 37.595'	W121° 15.862'
Helibase		N46° 38.294'	W121° 7.424'
Helispot	H-2	N46° 38.160'	W121° 24.500'
Helispot	H-4	N46° 35.260'	W121° 23.750'
Helispot	H-12	N46° 36.732'	W121° 24.227'
Helispot	H-15	N46° 37.448'	W121° 23.163'
Helispot	H-30	N46° 33.903"	W121° 21.685'
Helispot	H-55	N46° 37.584'	W121° 15.497'
Helispot	H-60	N46° 33.392'	W121° 18.803'
Helispot	H-87	N46° 38.163'	W121° 21.853'
Helispot	H-89	N46° 38.139'	W121° 21.007'
Incident Command Post	ICP	N46° 38.264'	W121° 23.456'
Sling Site	200	N46° 33.58"	W121° 21.05'
Unimproved Landing Area	U-40	N46° 37.362'	W121° 18.057'

- Dip Site
- Drop Point
- Fire Location
- Helibase
- Landing Zone
- Helispot
- Incident Command Post
- Slash Pile
- Mobile Weather Unit
- Repeater
- Sling Site
- Spot Fire
- Water Source
- Value at Risk
- Log Deck
- Division Break
- Completed Hand Line
- Uncontrolled Fire Edge
- Completed Line
- Completed Dozer Line
- Road as Completed Line
- Exposed Cable on Ground
- Aerial Retardant Drop
- Trail Prepped as Line
- Powerlines

