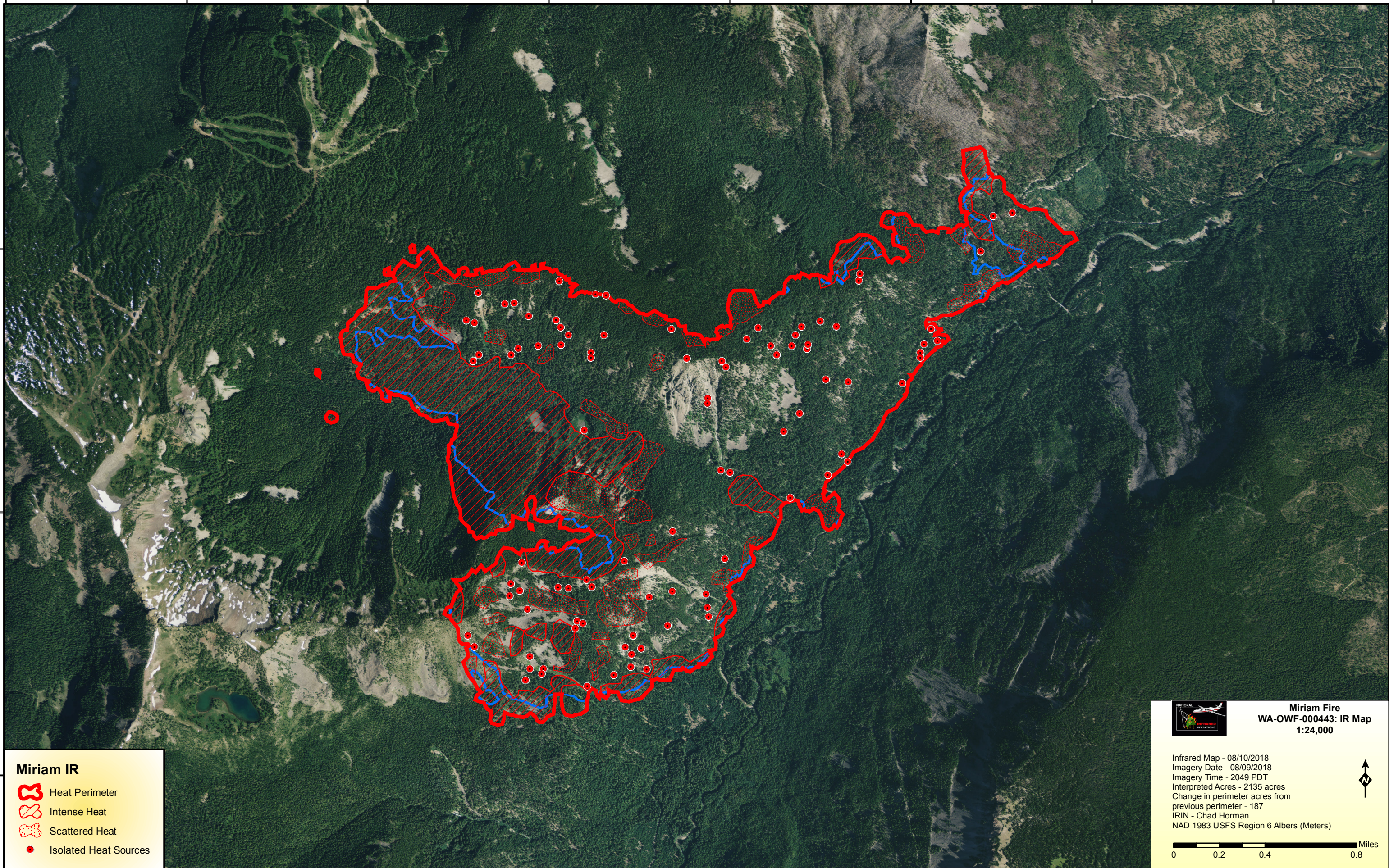


121°25'0"W

121°20'0"W







46°35'0"N

121°20'0"W

46°35'0"N

Miriam IR

-  Heat Perimeter
-  Intense Heat
-  Scattered Heat
-  Isolated Heat Sources



Miriam Fire
WA-OWF-000443: IR Map
1:24,000

Infrared Map - 08/10/2018
 Imagery Date - 08/09/2018
 Imagery Time - 2049 PDT
 Interpreted Acres - 2135 acres
 Change in perimeter acres from
 previous perimeter - 187
 IRIN - Chad Horman
 NAD 1983 USFS Region 6 Albers (Meters)

