



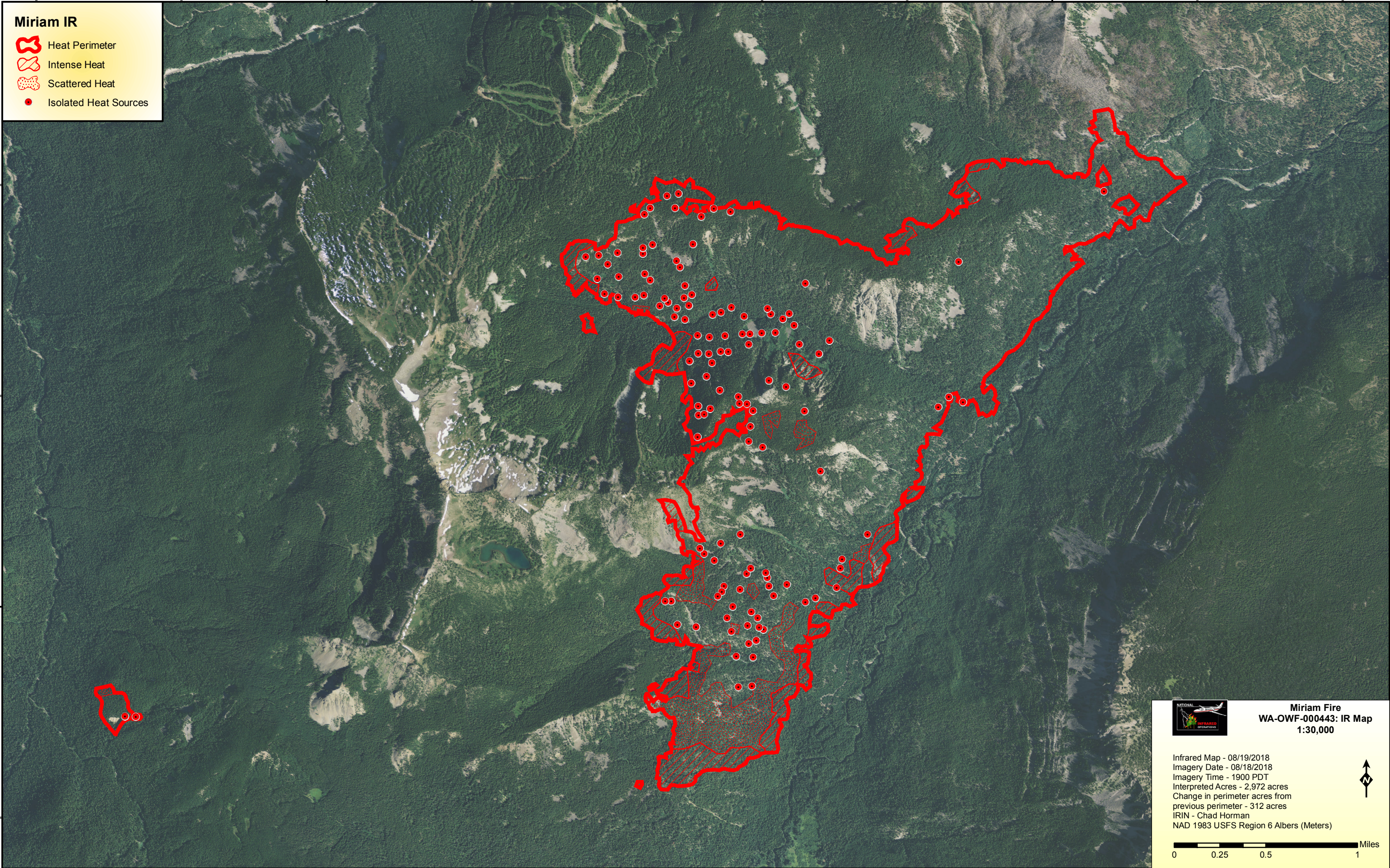


121°25'0"W

121°20'0"W

### Miriam IR

-  Heat Perimeter
-  Intense Heat
-  Scattered Heat
-  Isolated Heat Sources



**Miriam Fire**  
**WA-OWF-000443: IR Map**  
**1:30,000**

Infrared Map - 08/19/2018  
 Imagery Date - 08/18/2018  
 Imagery Time - 1900 PDT  
 Interpreted Acres - 2,972 acres  
 Change in perimeter acres from  
 previous perimeter - 312 acres  
 IRIN - Chad Horman  
 NAD 1983 USFS Region 6 Albers (Meters)

