



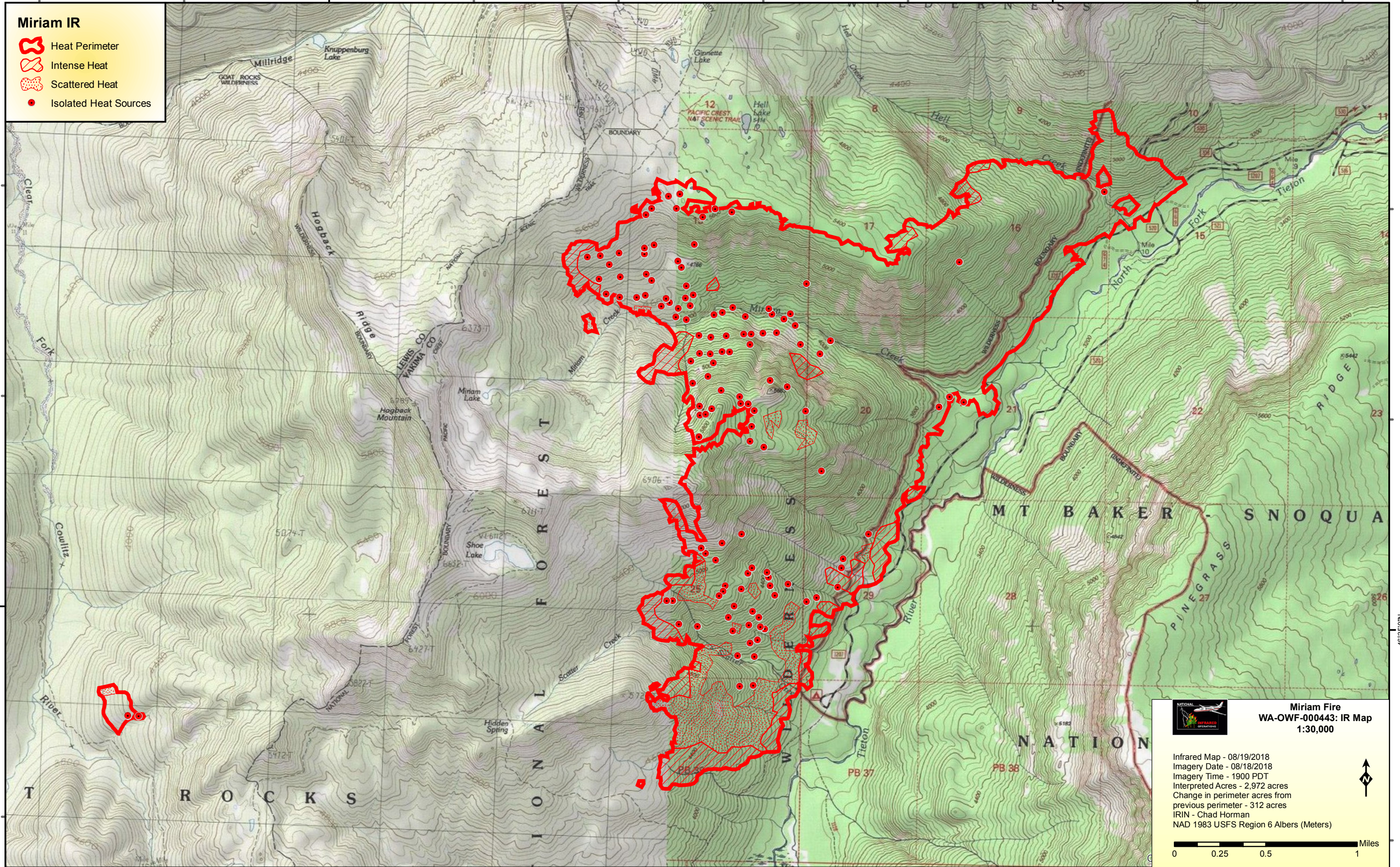


121°25'0"W

121°20'0"W

Miriam IR

-  Heat Perimeter
-  Intense Heat
-  Scattered Heat
-  Isolated Heat Sources



46°35'0"N

46°35'0"N

121°25'0"W

121°20'0"W



Miriam Fire
WA-OWF-000443: IR Map
1:30,000

Infrared Map - 08/19/2018
 Imagery Date - 08/18/2018
 Imagery Time - 1900 PDT
 Interpreted Acres - 2,972 acres
 Change in perimeter acres from
 previous perimeter - 312 acres
 IRIN - Chad Horman
 NAD 1983 USFS Region 6 Albers (Meters)

