

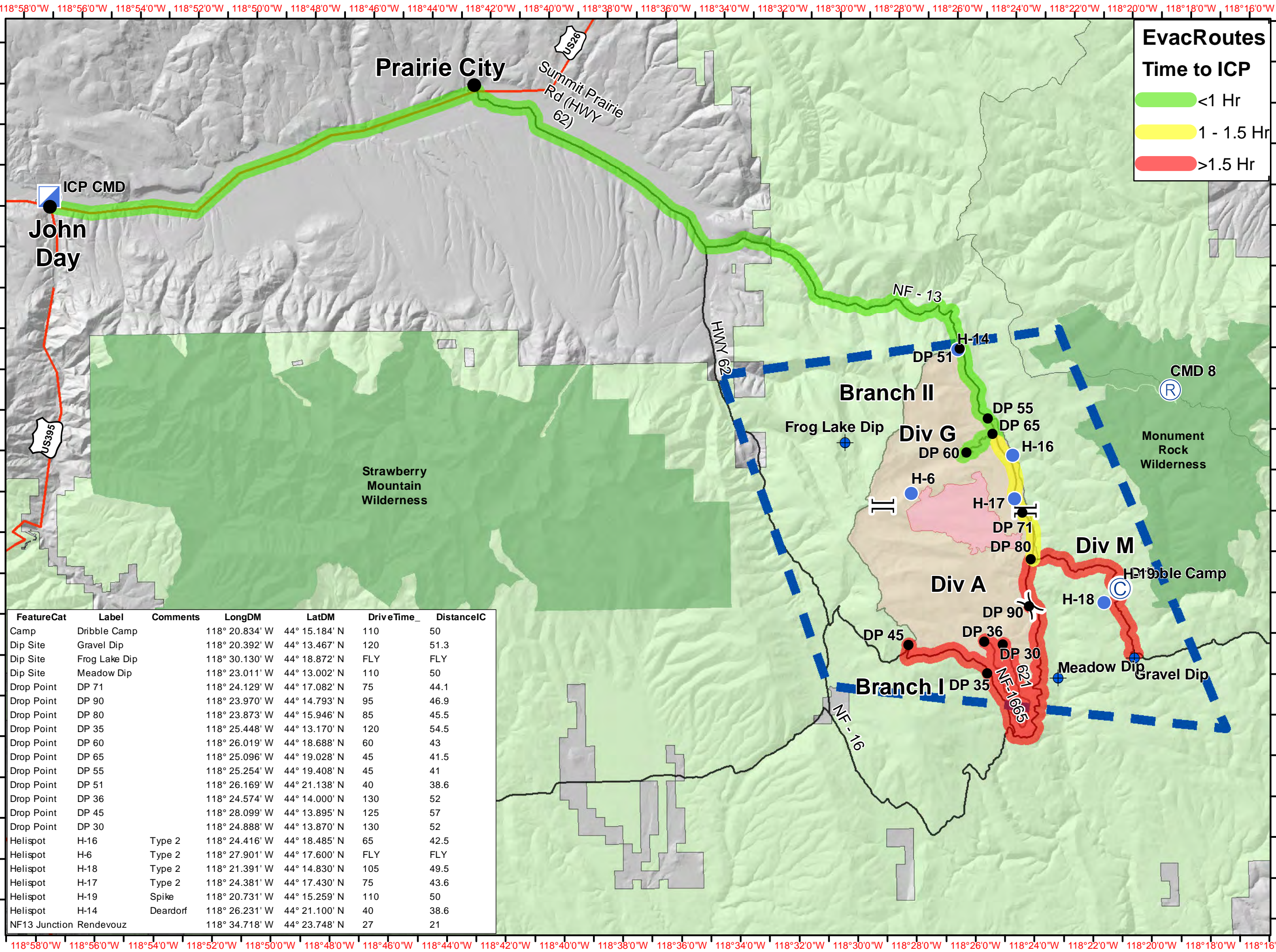
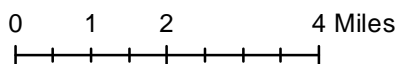
# Dutch Creek Map

204 Cow Fire  
 OR-MAF-019204  
 8/26/2019 0700-2000 hrs  
 Projection :  
 NAD 1983 USFS R6 Albers

## Legend

- Camp
- Dip Site
- Drop Point
- Helispot
- ICP
- Repeater
- Division Break
- Branch Break
- Area Closure
- 204 Cow Fire
- Wilderness
- Forest Service
- Major Roads
- TFR

1:160,000



### EvacRoutes

#### Time to ICP

- <1 Hr
- 1 - 1.5 Hr
- >1.5 Hr

FeatureCat	Label	Comments	LongDM	LatDM	DriveTime_	DistanceIC
Camp	Dribble Camp		118° 20.834' W	44° 15.184' N	110	50
Dip Site	Gravel Dip		118° 20.392' W	44° 13.467' N	120	51.3
Dip Site	Frog Lake Dip		118° 30.130' W	44° 18.872' N	FLY	FLY
Dip Site	Meadow Dip		118° 23.011' W	44° 13.002' N	110	50
Drop Point	DP 71		118° 24.129' W	44° 17.082' N	75	44.1
Drop Point	DP 90		118° 23.970' W	44° 14.793' N	95	46.9
Drop Point	DP 80		118° 23.873' W	44° 15.946' N	85	45.5
Drop Point	DP 35		118° 25.448' W	44° 13.170' N	120	54.5
Drop Point	DP 60		118° 26.019' W	44° 18.688' N	60	43
Drop Point	DP 65		118° 25.096' W	44° 19.028' N	45	41.5
Drop Point	DP 55		118° 25.254' W	44° 19.408' N	45	41
Drop Point	DP 51		118° 26.169' W	44° 21.138' N	40	38.6
Drop Point	DP 36		118° 24.574' W	44° 14.000' N	130	52
Drop Point	DP 45		118° 28.099' W	44° 13.895' N	125	57
Drop Point	DP 30		118° 24.888' W	44° 13.870' N	130	52
Helispot	H-16	Type 2	118° 24.416' W	44° 18.485' N	65	42.5
Helispot	H-6	Type 2	118° 27.901' W	44° 17.600' N	FLY	FLY
Helispot	H-18	Type 2	118° 21.391' W	44° 14.830' N	105	49.5
Helispot	H-17	Type 2	118° 24.381' W	44° 17.430' N	75	43.6
Helispot	H-19	Spike	118° 20.731' W	44° 15.259' N	110	50
Helispot	H-14	Deardorf	118° 26.231' W	44° 21.100' N	40	38.6
NF13 Junction	Rendevouz		118° 34.718' W	44° 23.748' N	27	21