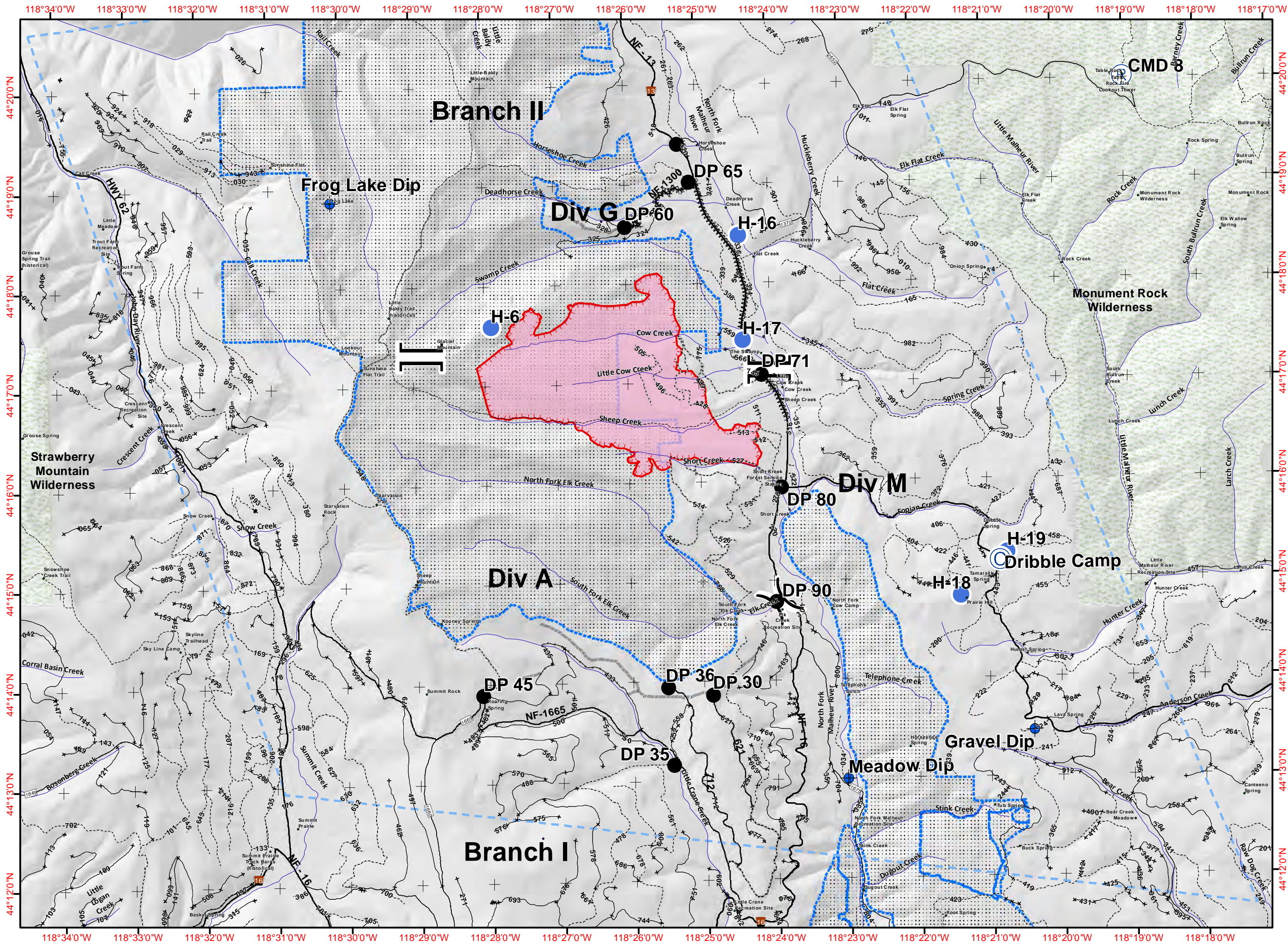
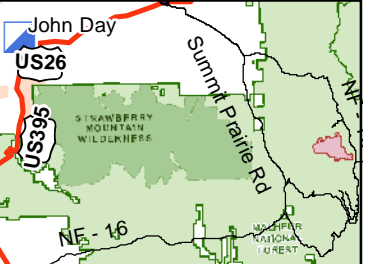


**IAP Map**  
**204 Cow Fire**  
**OR-MAF-019204**  
**8/26/2019 0700-2000 hrs**  
 Approx 1,653 Ac

- Legend**
- Camp
  - Dip Site
  - Drop Point
  - Helispot
  - ICP
  - Repeater
  - Division Break
  - Branch Break
  - Streams
  - Major Road
  - Local Road
  - Closed FS Road
  - Uncontrolled Fire Edge
  - Completed Dozer Line
  - Completed Hand Line
  - Road as Completed Line
  - Fire Break Planned/Incomplete
  - Temporary Flight Restriction
  - Roadless Area
  - Wilderness
  - 204 Cow Fire

0 0.75 1.5 Miles  
 1:65,000



44°20'0"N  
44°19'0"N  
44°18'0"N  
44°17'0"N  
44°16'0"N  
44°15'0"N  
44°14'0"N  
44°13'0"N  
44°12'0"N

118°34'0"W  
118°33'0"W  
118°32'0"W  
118°31'0"W  
118°30'0"W  
118°29'0"W  
118°28'0"W  
118°27'0"W  
118°26'0"W  
118°25'0"W  
118°24'0"W  
118°23'0"W  
118°22'0"W  
118°21'0"W  
118°20'0"W  
118°19'0"W  
118°18'0"W  
118°17'0"W