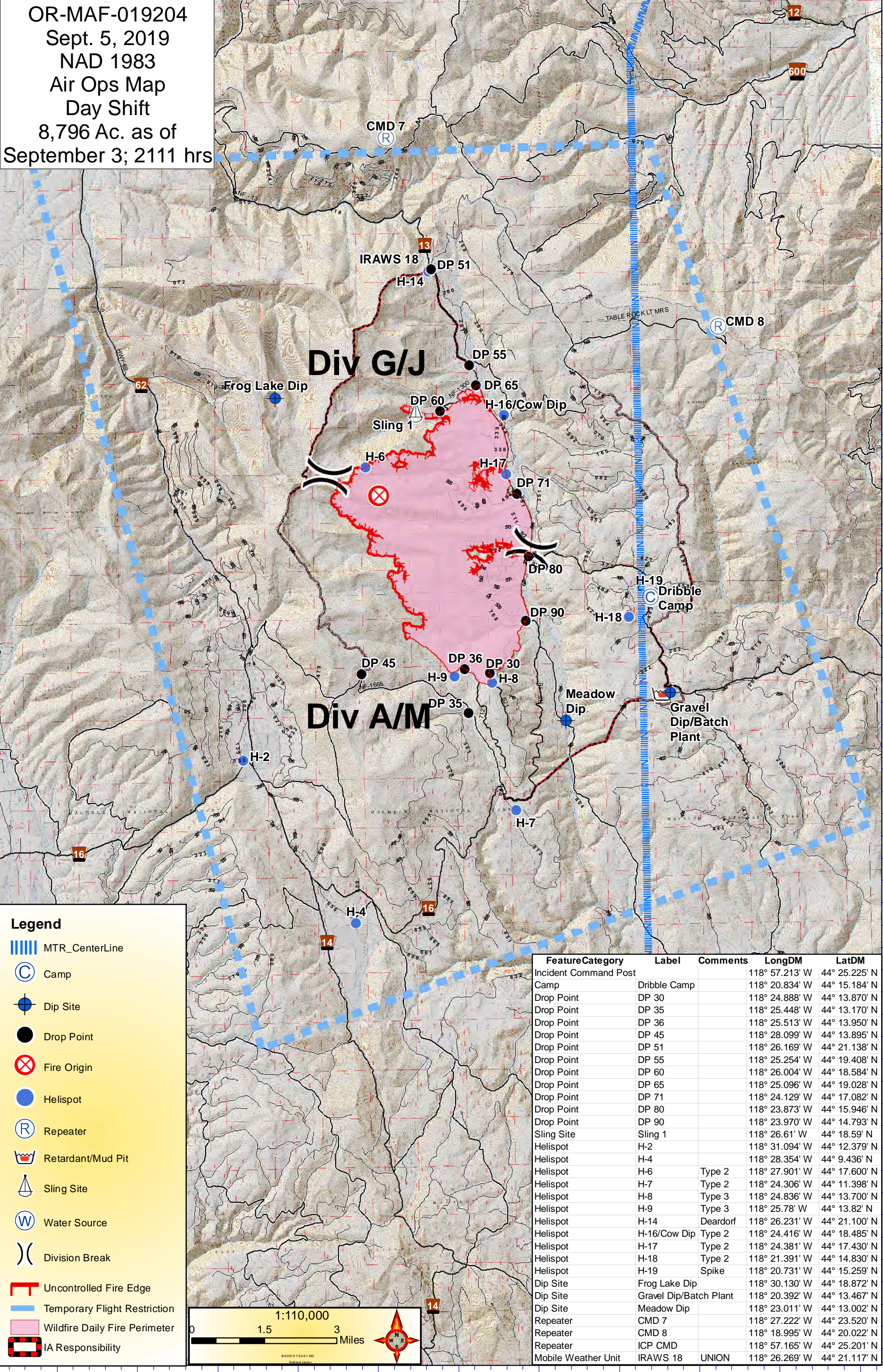
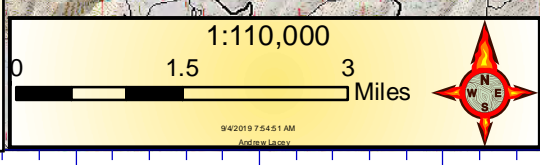


OR-MAF-019204
 Sept. 5, 2019
 NAD 1983
 Air Ops Map
 Day Shift
 8,796 Ac. as of
 September 3; 2111 hrs



Legend

- MTR_CenterLine
- Camp
- Dip Site
- Drop Point
- Fire Origin
- Helispot
- Repeater
- Retardant/Mud Pit
- Sling Site
- Water Source
- Division Break
- Uncontrolled Fire Edge
- Temporary Flight Restriction
- Wildfire Daily Fire Perimeter
- IA Responsibility



| FeatureCategory | Label | Comments | LongDM | LatDM |
|-----------------------|------------------------|----------|----------------|---------------|
| Incident Command Post | | | 118° 57.213' W | 44° 25.225' N |
| Camp | Dribble Camp | | 118° 20.834' W | 44° 15.184' N |
| Drop Point | DP 30 | | 118° 24.888' W | 44° 13.870' N |
| Drop Point | DP 35 | | 118° 25.448' W | 44° 13.170' N |
| Drop Point | DP 36 | | 118° 25.513' W | 44° 13.950' N |
| Drop Point | DP 45 | | 118° 28.099' W | 44° 13.895' N |
| Drop Point | DP 51 | | 118° 26.169' W | 44° 21.138' N |
| Drop Point | DP 55 | | 118° 25.254' W | 44° 19.408' N |
| Drop Point | DP 60 | | 118° 26.004' W | 44° 18.584' N |
| Drop Point | DP 65 | | 118° 25.096' W | 44° 19.028' N |
| Drop Point | DP 71 | | 118° 24.129' W | 44° 17.082' N |
| Drop Point | DP 80 | | 118° 23.873' W | 44° 15.946' N |
| Drop Point | DP 90 | | 118° 23.970' W | 44° 14.793' N |
| Sling Site | Sling 1 | | 118° 26.61' W | 44° 18.59' N |
| Helispot | H-2 | | 118° 31.094' W | 44° 12.379' N |
| Helispot | H-4 | | 118° 28.354' W | 44° 9.436' N |
| Helispot | H-6 | Type 2 | 118° 27.901' W | 44° 17.600' N |
| Helispot | H-7 | Type 2 | 118° 24.306' W | 44° 11.398' N |
| Helispot | H-8 | Type 3 | 118° 24.836' W | 44° 13.700' N |
| Helispot | H-9 | Type 3 | 118° 25.78' W | 44° 13.82' N |
| Helispot | H-14 | Deardorf | 118° 26.231' W | 44° 21.100' N |
| Helispot | H-16/Cow Dip | Type 2 | 118° 24.416' W | 44° 18.485' N |
| Helispot | H-17 | Type 2 | 118° 24.381' W | 44° 17.430' N |
| Helispot | H-18 | Type 2 | 118° 21.391' W | 44° 14.830' N |
| Helispot | H-19 | Spike | 118° 20.731' W | 44° 15.259' N |
| Dip Site | Frog Lake Dip | | 118° 30.130' W | 44° 18.872' N |
| Dip Site | Gravel Dip/Batch Plant | | 118° 20.392' W | 44° 13.467' N |
| Dip Site | Meadow Dip | | 118° 23.011' W | 44° 13.002' N |
| Repeater | CMD 7 | | 118° 27.222' W | 44° 23.520' N |
| Repeater | CMD 8 | | 118° 18.995' W | 44° 20.022' N |
| Repeater | ICP CMD | | 118° 57.165' W | 44° 25.021' N |
| Mobile Weather Unit | IRAWS 18 | UNION | 118° 26.269' W | 44° 21.117' N |