

# Dutch Creek Map

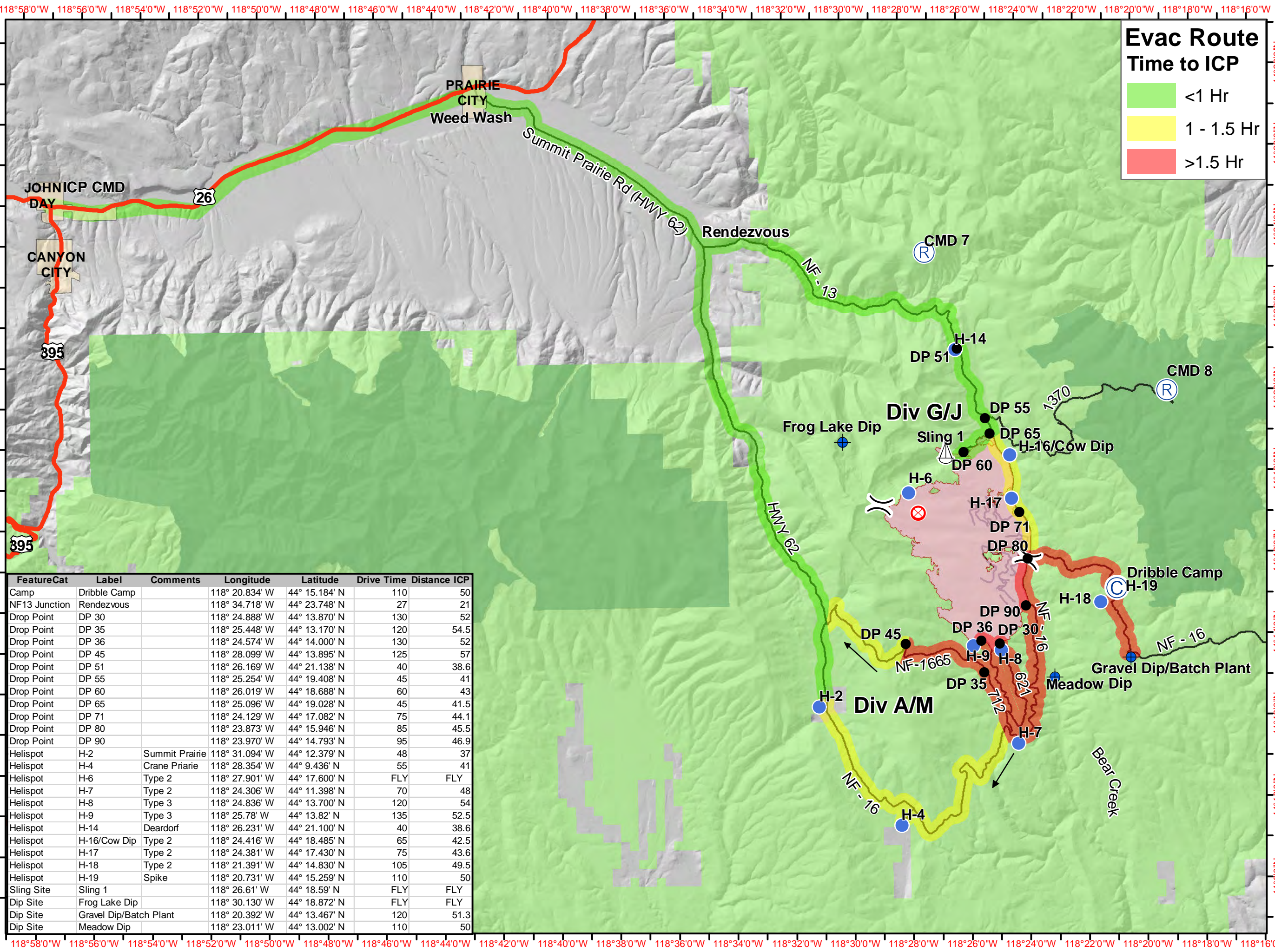
204 Cow Fire  
 OR-MAF-019204  
 9/05/2019 0700-2000 hrs  
 Projection :  
 NAD 1983 USFS R6 Albers

### Evac Route Time to ICP

- <1 Hr
- 1 - 1.5 Hr
- >1.5 Hr

## Legend

- Ⓒ Camp
- ⊕ Dip Site
- Drop Point
- ⊗ Fire Origin
- Helispot
- Ⓘ Repeater
- ⚓ Sling Site
- )( Division Break
- Highway
- City
- 204 Cow Fire
- Wilderness
- U.S. Forest Service



FeatureCat	Label	Comments	Longitude	Latitude	Drive Time	Distance	ICP
Camp	Dribble Camp		118° 20.834' W	44° 15.184' N	110		50
NF13 Junction	Rendezvous		118° 34.718' W	44° 23.748' N	27		21
Drop Point	DP 30		118° 24.888' W	44° 13.870' N	130		52
Drop Point	DP 35		118° 25.448' W	44° 13.170' N	120		54.5
Drop Point	DP 36		118° 24.574' W	44° 14.000' N	130		52
Drop Point	DP 45		118° 28.099' W	44° 13.895' N	125		57
Drop Point	DP 51		118° 26.169' W	44° 21.138' N	40		38.6
Drop Point	DP 55		118° 25.254' W	44° 19.408' N	45		41
Drop Point	DP 60		118° 26.019' W	44° 18.688' N	60		43
Drop Point	DP 65		118° 25.096' W	44° 19.028' N	45		41.5
Drop Point	DP 71		118° 24.129' W	44° 17.082' N	75		44.1
Drop Point	DP 80		118° 23.873' W	44° 15.946' N	85		45.5
Drop Point	DP 90		118° 23.970' W	44° 14.793' N	95		46.9
Helispot	H-2	Summit Prairie	118° 31.094' W	44° 12.379' N	48		37
Helispot	H-4	Crane Priarie	118° 28.354' W	44° 9.436' N	55		41
Helispot	H-6	Type 2	118° 27.901' W	44° 17.600' N	FLY		FLY
Helispot	H-7	Type 2	118° 24.306' W	44° 11.398' N	70		48
Helispot	H-8	Type 3	118° 24.836' W	44° 13.700' N	120		54
Helispot	H-9	Type 3	118° 25.78' W	44° 13.82' N	135		52.5
Helispot	H-14	Deardorf	118° 26.231' W	44° 21.100' N	40		38.6
Helispot	H-16/Cow Dip	Type 2	118° 24.416' W	44° 18.485' N	65		42.5
Helispot	H-17	Type 2	118° 24.381' W	44° 17.430' N	75		43.6
Helispot	H-18	Type 2	118° 21.391' W	44° 14.830' N	105		49.5
Helispot	H-19	Spike	118° 20.731' W	44° 15.259' N	110		50
Sling Site	Sling 1		118° 26.61' W	44° 18.59' N	FLY		FLY
Dip Site	Frog Lake Dip		118° 30.130' W	44° 18.872' N	FLY		FLY
Dip Site	Gravel Dip/Batch Plant		118° 20.392' W	44° 13.467' N	120		51.3
Dip Site	Meadow Dip		118° 23.011' W	44° 13.002' N	110		50

