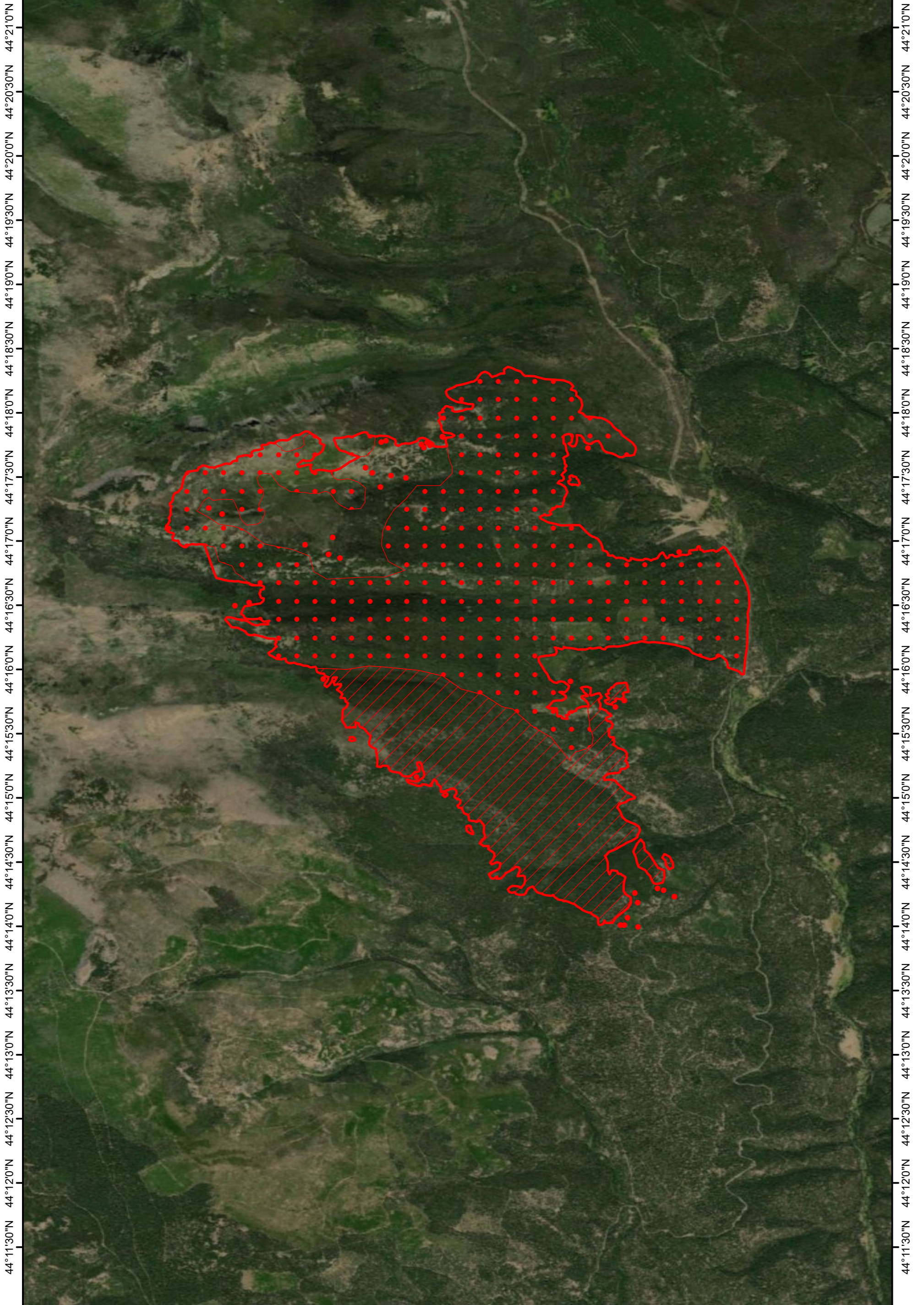
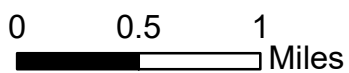


118°29'0"W 118°28'30"W 118°28'0"W 118°27'30"W 118°27'0"W 118°26'30"W 118°26'0"W 118°25'30"W 118°25'0"W 118°24'30"W 118°24'0"W 118°23'30"W 118°23'0"W



118°29'0"W 118°28'30"W 118°28'0"W 118°27'30"W 118°27'0"W 118°26'30"W 118°26'0"W 118°25'30"W 118°25'0"W 118°24'30"W 118°24'0"W 118°23'30"W 118°23'0"W

-  Heat Perimeter
-  Intense Heat
-  Scattered Heat
-  Isolated Heat



204 Cow - Infrared Map
 OR-MAF-019204
 Imagery Date: 20190829 0202 PDT
 Interpreted Acres: 5,516



Infrared Interpreter: Lauren Miller