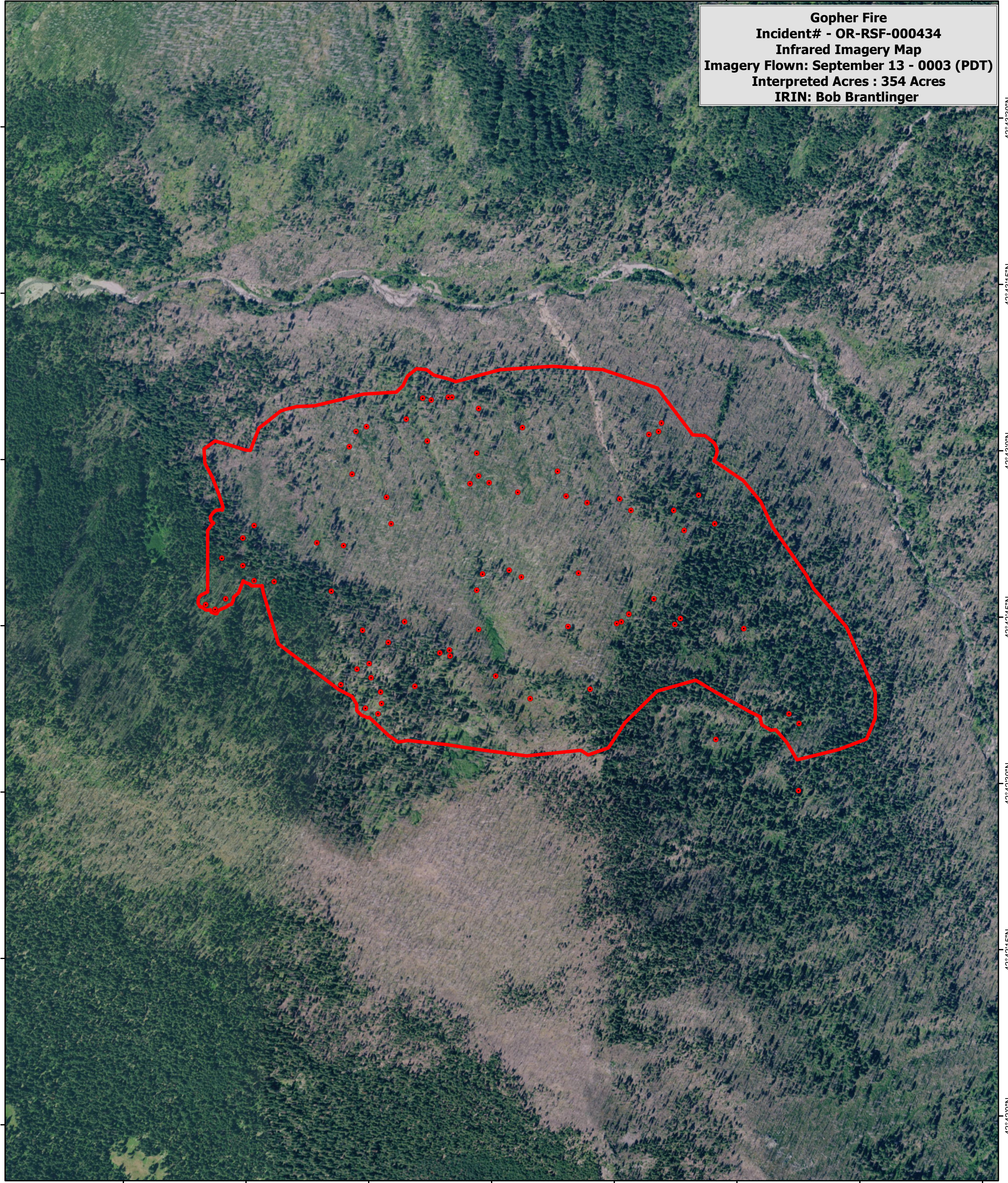


122°16'15"W 122°16'0"W 122°15'45"W 122°15'30"W 122°15'15"W 122°15'0"W 122°14'45"W 122°14'30"W

Gopher Fire
Incident# - OR-RSF-000434
Infrared Imagery Map
Imagery Flown: September 13 - 0003 (PDT)
Interpreted Acres : 354 Acres
IRIN: Bob Brantlinger





42°43'30"N
42°43'15"N
42°43'0"N
42°42'45"N
42°42'30"N
42°42'15"N
42°42'0"N

42°43'30"N
42°43'15"N
42°43'0"N
42°42'45"N
42°42'30"N
42°42'15"N
42°42'0"N



122°16'15"W 122°16'0"W 122°15'45"W 122°15'30"W 122°15'15"W 122°15'0"W 122°14'45"W 122°14'30"W

Legend

-  **Heat Perimeter**
-  **Intense Heat**
-  **Isolated Heat Source**
-  **Scattered Heat Source**

