

122°16'30"W 122°16'0"W 122°15'30"W 122°15'0"W 122°14'30"W 122°14'0"W



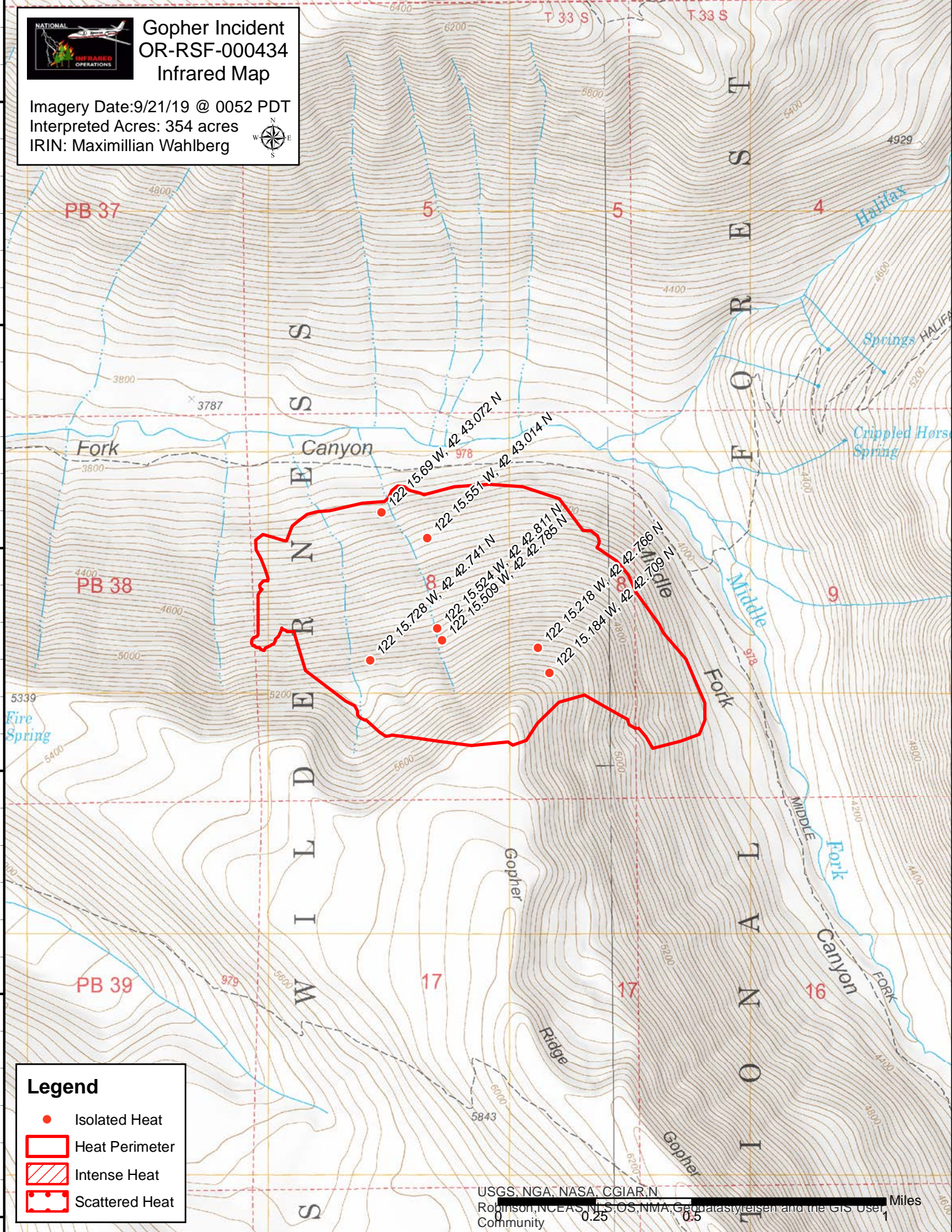
Gopher Incident OR-RSF-000434 Infrared Map

Imagery Date: 9/21/19 @ 0052 PDT
Interpreted Acres: 354 acres
IRIN: Maximillian Wahlberg



42°44'0"N
42°43'30"N
42°43'0"N
42°42'30"N
42°42'0"N
42°41'30"N

42°44'0"N
42°43'30"N
42°43'0"N
42°42'30"N
42°42'0"N
42°41'30"N



Legend

- Isolated Heat
- Heat Perimeter
- Intense Heat
- Scattered Heat

USGS, NGA, NASA, CGIAR, N
Robinson, NCEAS, U.S. OS, NMA, GeoData, styreisen and the GIS User
Community 0.25 0.5 Miles

122°16'30"W 122°16'0"W 122°15'30"W 122°15'0"W 122°14'30"W 122°14'0"W