

117°28'0"W 117°27'0"W 117°26'0"W 117°25'0"W 117°24'0"W 117°23'0"W 117°22'0"W 117°21'0"W

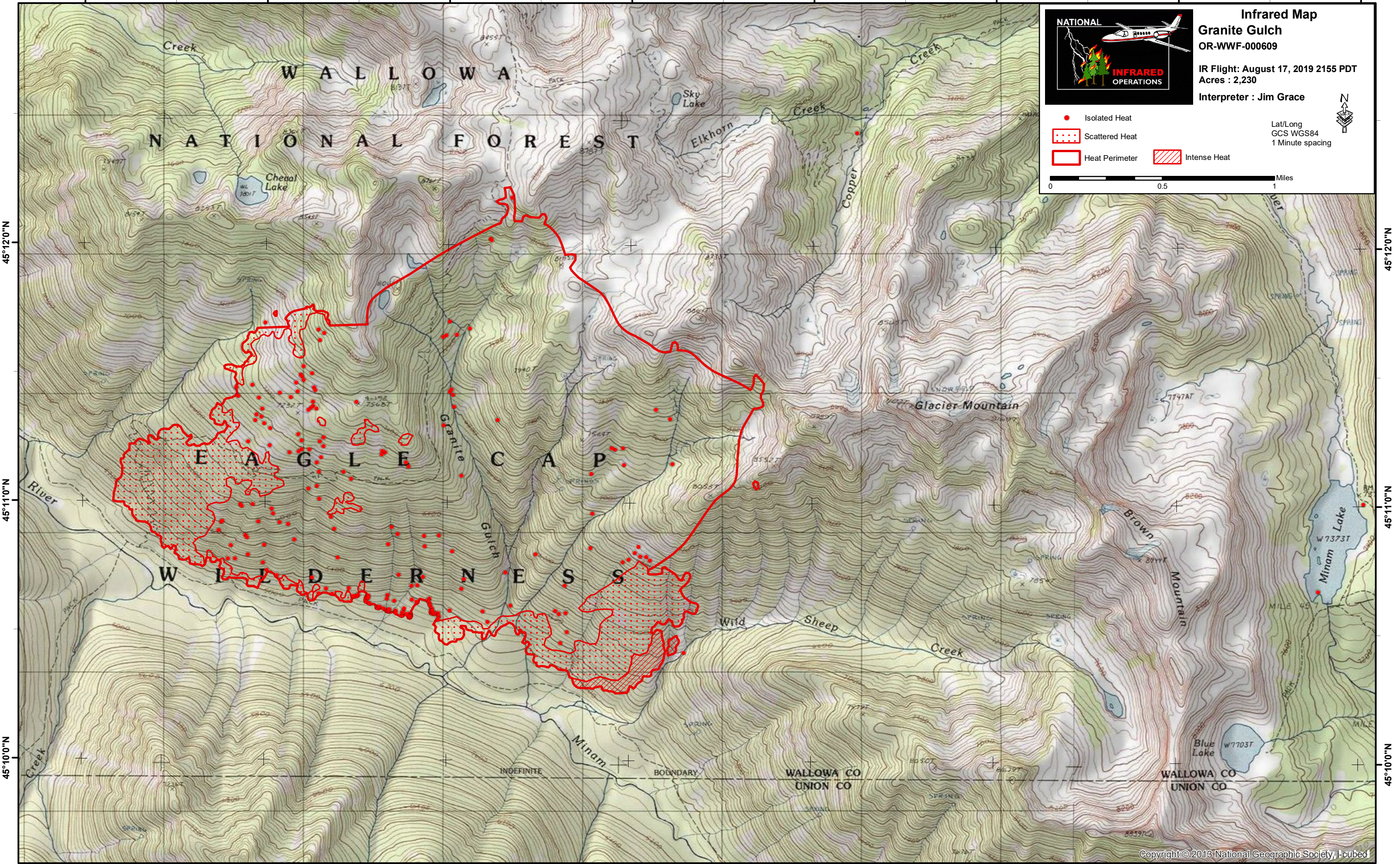


Infrared Map
Granite Gulch
OR-WWF-000609
IR Flight: August 17, 2019 2155 PDT
Acres : 2,230
Interpreter : Jim Grace

● Isolated Heat
 Scattered Heat
 Heat Perimeter
 Intense Heat

Lat/Long
 GCS WGS84
 1 Minute spacing

0 0.5 1 Miles



45°12'0"N
45°11'0"N
45°10'0"N

45°12'0"N
45°11'0"N
45°10'0"N

117°28'0"W 117°27'0"W 117°26'0"W 117°25'0"W 117°24'0"W 117°23'0"W 117°22'0"W 117°21'0"W