

117°29'0"W 117°28'0"W 117°27'0"W 117°26'0"W 117°25'0"W 117°24'0"W 117°23'0"W

45°12'0"N

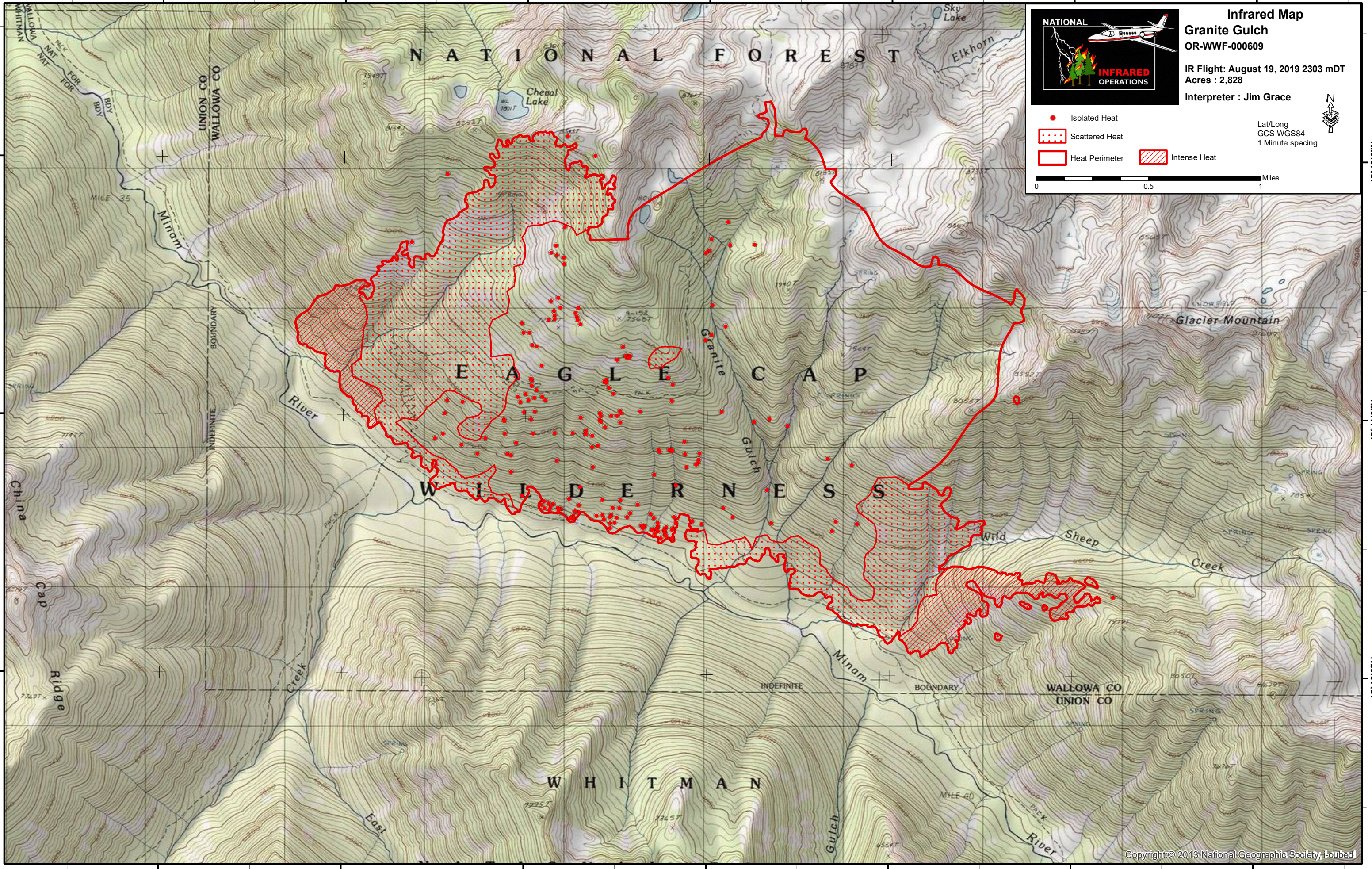
45°11'0"N

45°10'0"N

45°12'0"N

45°11'0"N

45°10'0"N



NATIONAL INFRARED OPERATIONS

Infrared Map
Granite Gulch
 OR-WWF-000609

IR Flight: August 19, 2019 2303 mDT
 Acres : 2,828
 Interpreter : Jim Grace

Lat/Long
 GCS WGS84
 1 Minute spacing

Legend:
 ● Isolated Heat
 ■ Scattered Heat
 □ Heat Perimeter
 ▨ Intense Heat

Scale: 0 0.5 1 Miles

117°29'0"W 117°28'0"W 117°27'0"W 117°26'0"W 117°25'0"W 117°24'0"W 117°23'0"W