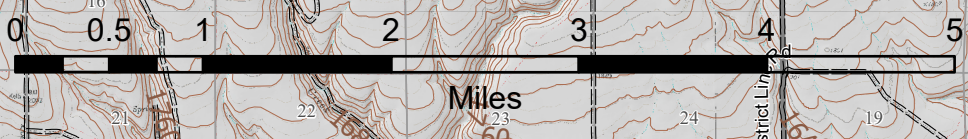
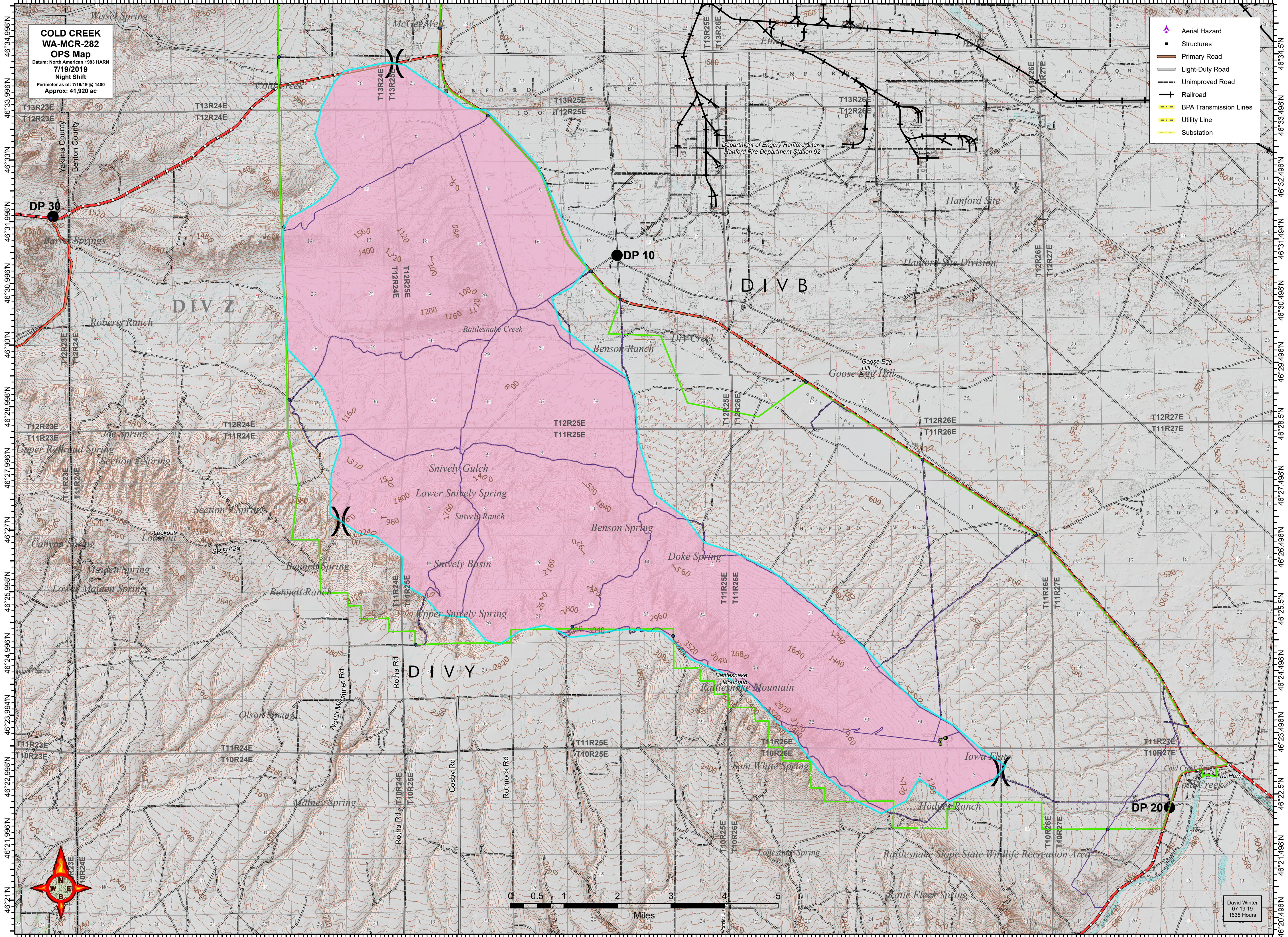


119°53.502'W 119°52.5'W 119°51.504'W 119°50.004'W 119°48.504'W 119°47.004'W 119°45.504'W 119°44.004'W 119°42.504'W 119°41.004'W 119°39.504'W 119°38.004'W 119°36.504'W 119°35.004'W 119°33.504'W 119°32.004'W 119°30.504'W 119°29.004'W 119°27.504'W 119°26.004'W 119°24.504'W

**COLD CREEK  
WA-MCR-282  
OPS Map**  
Datum: North American 1983 HARN  
7/19/2019  
Night Shift  
Perimeter as of: 7/19/19 @ 1400  
Approx: 41,920 ac

- Aerial Hazard
- Structures
- Primary Road
- Light-Duty Road
- Unimproved Road
- Railroad
- BPA Transmission Lines
- Utility Line
- Substation



David Winter  
07 19 19  
1635 Hours