

120°48'W

120°46'W

120°44'W

120°42'W

120°40'W

120°38'W

48°20'N

48°20'N

48°18'N

48°18'N

48°16'N

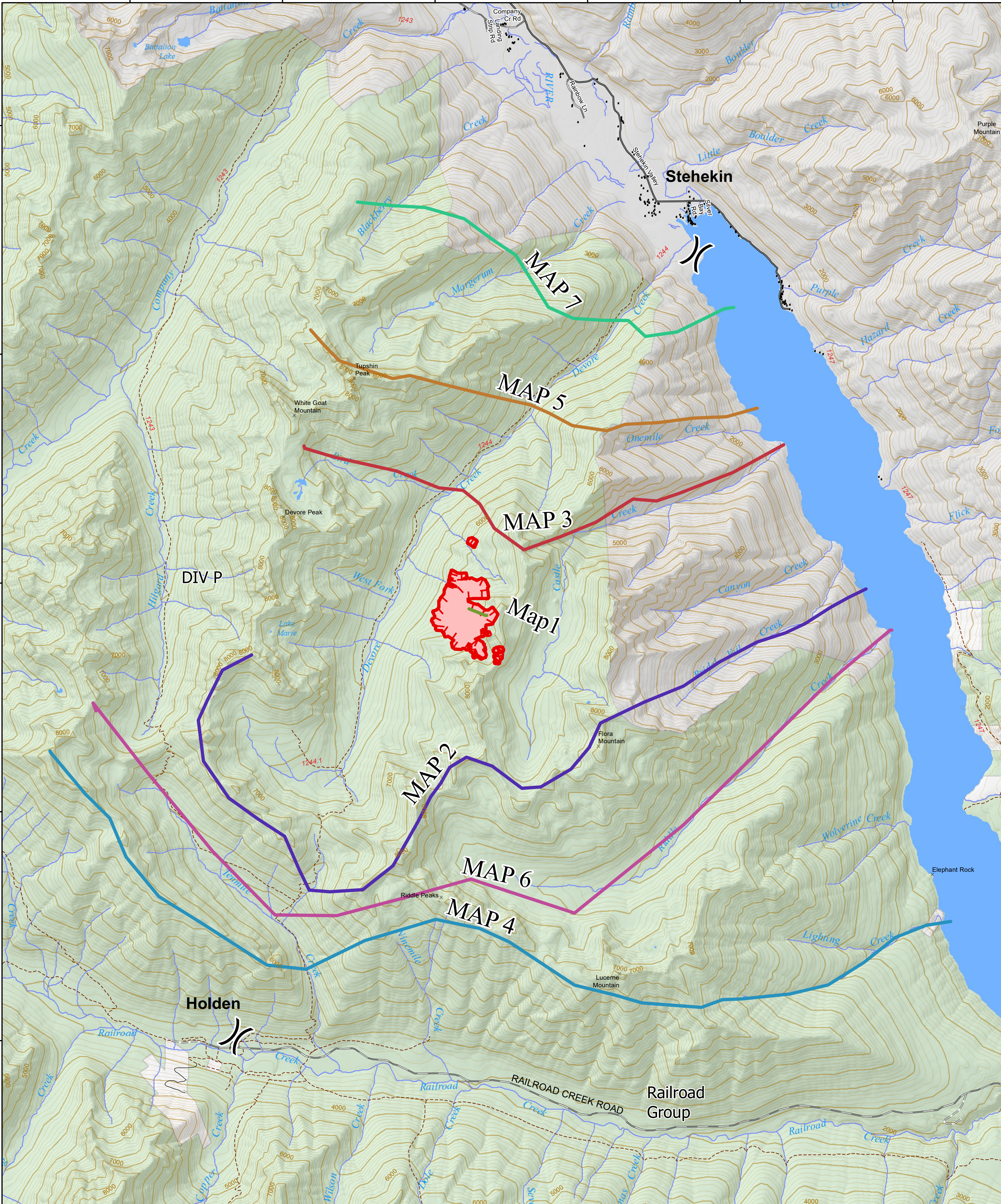
48°16'N

48°14'N

48°14'N

48°12'N

48°12'N



Devore Creek Fire
WA-OWF-000362
193 ac
 IR as of 8/5/19 at 2343



Planning Map

Date: 8/6/2019

NIMO GISS 8/6/2019 @ 0704

- Structures
- ⌘ Division Break
- Uncontrolled Fire Edge
- Wildfire Daily Fire Perimeter
- Trail
- City, Private Roads
- Gravel Road, Suitable for Passenger Car
- Road Not Suitable for Passenger Car
- FS
- NPS
- PVT

