

120°48'W

120°46'W

120°44'W

120°42'W

120°40'W

120°38'W

48°20'N

48°18'N

48°16'N

48°14'N

48°12'N

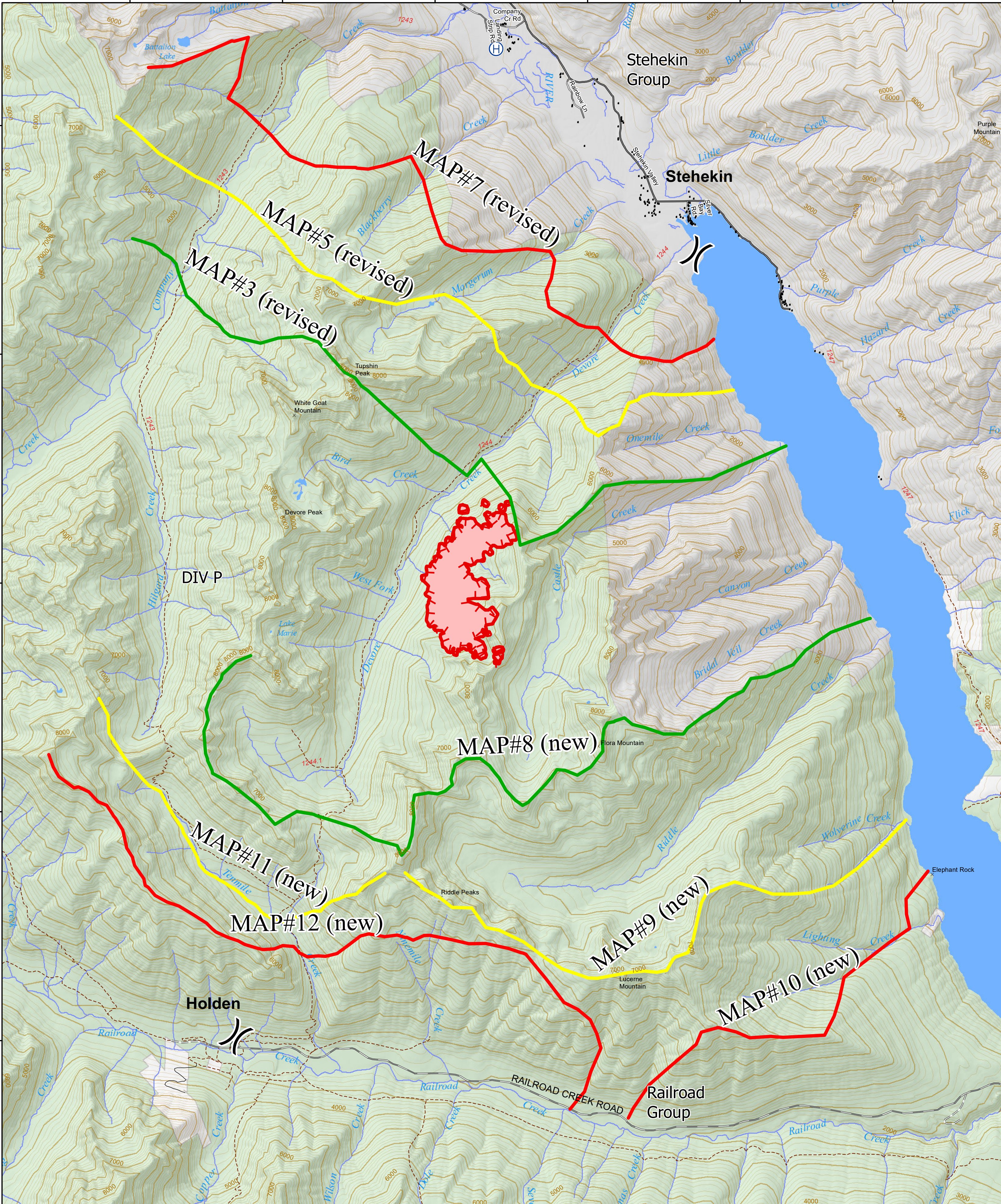
48°20'N

48°18'N

48°16'N

48°14'N

48°12'N



120°48'W

120°46'W

120°44'W

120°42'W

120°40'W

120°38'W

Devore Creek Fire
WA-OWF-000362

425 ac

IR as of 8/7/19 at 2333

Miles



Proposed
MAPs

Date: 8/8/2019

NIMO GISS 8/8/2019 @ 1139

- Structures
- Ⓜ Helibase
- ⌘ Division Break
- Uncontrolled Fire Edge
- Wildfire Daily Fire Perimeter
- - - Trail
- City, Private Roads
- Gravel Road, Suitable for Passenger Car
- - - Road Not Suitable for Passenger Car
- FS
- NPS
- PVT

