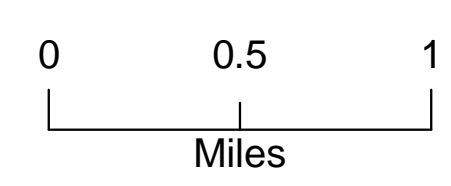
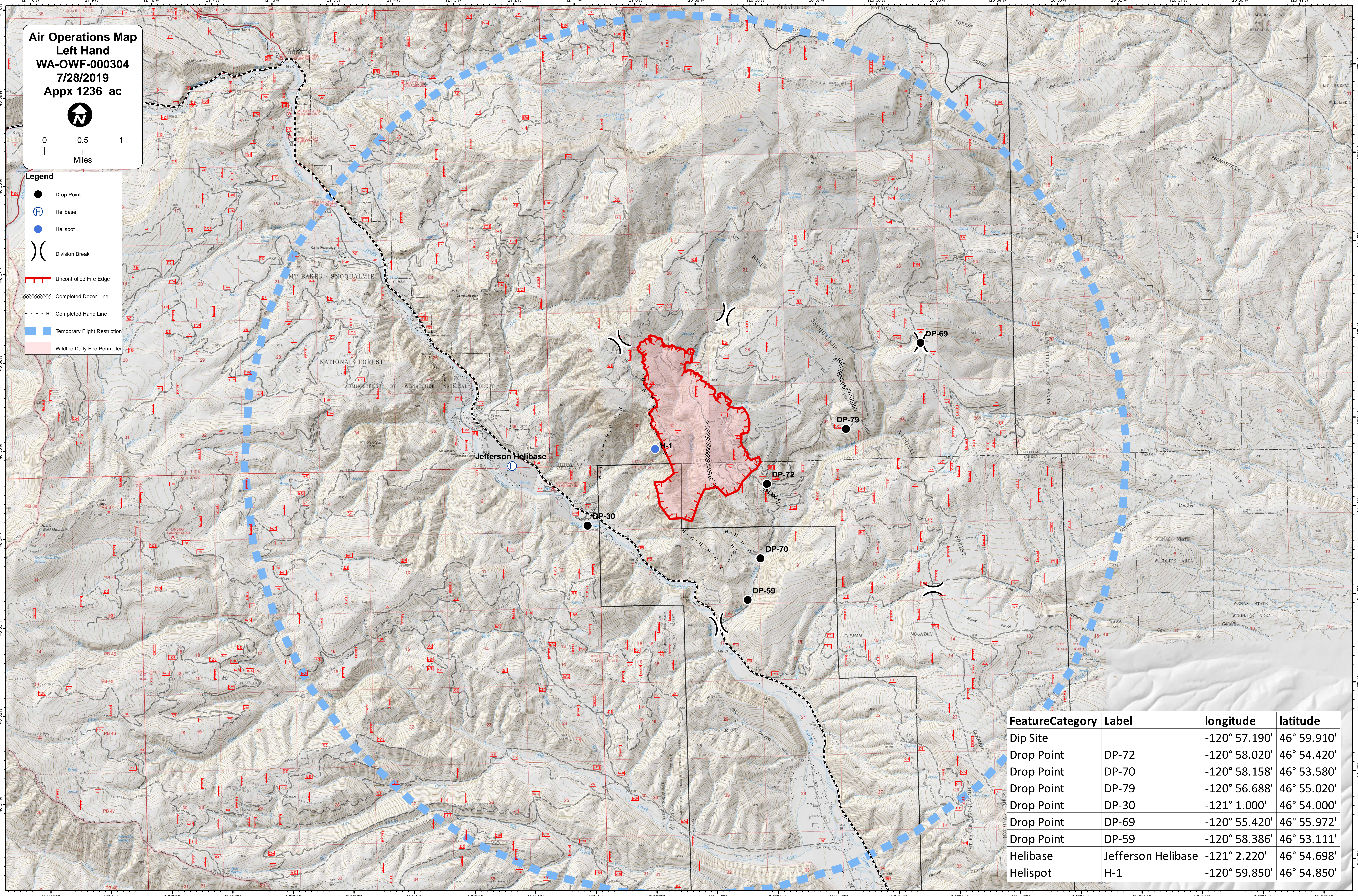


**Air Operations Map
Left Hand
WA-OWF-000304
7/28/2019
Appx 1236 ac**



- Legend**
- Drop Point
 - ⊕ Helibase
 - Helispot
 - ⎓ Division Break
 - Uncontrolled Fire Edge
 - ⊘ Completed Dozer Line
 - H · H · H Completed Hand Line
 - Temporary Flight Restriction
 - Wildfire Daily Fire Perimeter



FeatureCategory	Label	longitude	latitude
Dip Site		-120° 57.190'	46° 59.910'
Drop Point	DP-72	-120° 58.020'	46° 54.420'
Drop Point	DP-70	-120° 58.158'	46° 53.580'
Drop Point	DP-79	-120° 56.688'	46° 55.020'
Drop Point	DP-30	-121° 1.000'	46° 54.000'
Drop Point	DP-69	-120° 55.420'	46° 55.972'
Drop Point	DP-59	-120° 58.386'	46° 53.111'
Helibase	Jefferson Helibase	-121° 2.220'	46° 54.698'
Helispot	H-1	-120° 59.850'	46° 54.850'