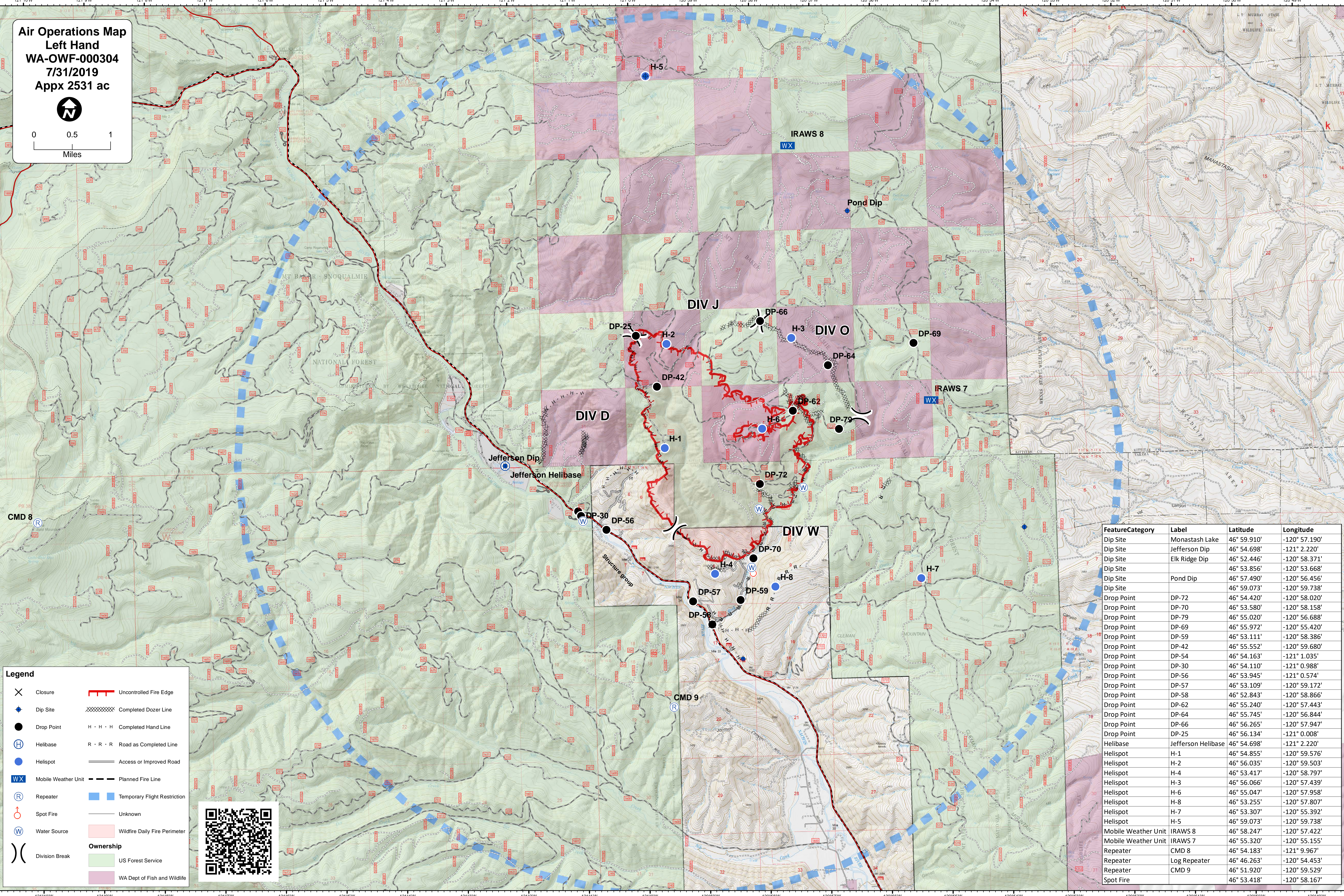


**Air Operations Map
Left Hand
WA-OWF-000304
7/31/2019
Appx 2531 ac**



0 0.5 1
Miles



Legend

✕	Closure	—	Uncontrolled Fire Edge
◆	Dip Site	XXXXXX	Completed Dozer Line
●	Drop Point	H · H · H	Completed Hand Line
⊕	Helibase	R · R · R	Road as Completed Line
●	Helispot	—	Access or Improved Road
WX	Mobile Weather Unit	---	Planned Fire Line
Ⓡ	Repeater	■	Temporary Flight Restriction
Ⓢ	Spot Fire	—	Unknown
Ⓜ	Water Source	■	Wildfire Daily Fire Perimeter
)	Division Break	■	Ownership
		■	US Forest Service
		■	WA Dept of Fish and Wildlife



FeatureCategory	Label	Latitude	Longitude
Dip Site	Monastash Lake	46° 59.910'	-120° 57.190'
Dip Site	Jefferson Dip	46° 54.698'	-121° 2.220'
Dip Site	Elk Ridge Dip	46° 52.446'	-120° 58.371'
Dip Site	Pond Dip	46° 53.856'	-120° 53.668'
Dip Site		46° 57.490'	-120° 56.456'
Dip Site		46° 59.073'	-120° 59.738'
Drop Point	DP-72	46° 54.420'	-120° 58.020'
Drop Point	DP-70	46° 53.580'	-120° 58.158'
Drop Point	DP-79	46° 55.020'	-120° 56.688'
Drop Point	DP-69	46° 55.972'	-120° 55.420'
Drop Point	DP-59	46° 53.111'	-120° 58.386'
Drop Point	DP-42	46° 55.552'	-120° 59.680'
Drop Point	DP-54	46° 54.163'	-121° 1.035'
Drop Point	DP-30	46° 54.110'	-121° 0.988'
Drop Point	DP-56	46° 53.945'	-121° 0.574'
Drop Point	DP-57	46° 53.109'	-120° 59.172'
Drop Point	DP-58	46° 52.843'	-120° 58.866'
Drop Point	DP-62	46° 55.240'	-120° 57.443'
Drop Point	DP-64	46° 55.745'	-120° 56.844'
Drop Point	DP-66	46° 56.265'	-120° 57.947'
Drop Point	DP-25	46° 56.134'	-121° 0.008'
Helibase	Jefferson Helibase	46° 54.698'	-121° 2.220'
Helispot	H-1	46° 54.855'	-120° 59.576'
Helispot	H-2	46° 56.035'	-120° 59.503'
Helispot	H-4	46° 53.417'	-120° 58.797'
Helispot	H-3	46° 56.066'	-120° 57.439'
Helispot	H-6	46° 55.047'	-120° 57.958'
Helispot	H-8	46° 53.255'	-120° 57.807'
Helispot	H-7	46° 53.307'	-120° 55.392'
Helispot	H-5	46° 59.073'	-120° 59.738'
Mobile Weather Unit	IRAWS 8	46° 58.247'	-120° 57.422'
Mobile Weather Unit	IRAWS 7	46° 55.320'	-120° 55.155'
Repeater	CMD 8	46° 54.183'	-121° 9.967'
Repeater	Log Repeater	46° 46.263'	-120° 54.453'
Repeater	CMD 9	46° 51.920'	-120° 59.529'
Spot Fire		46° 53.418'	-120° 58.167'