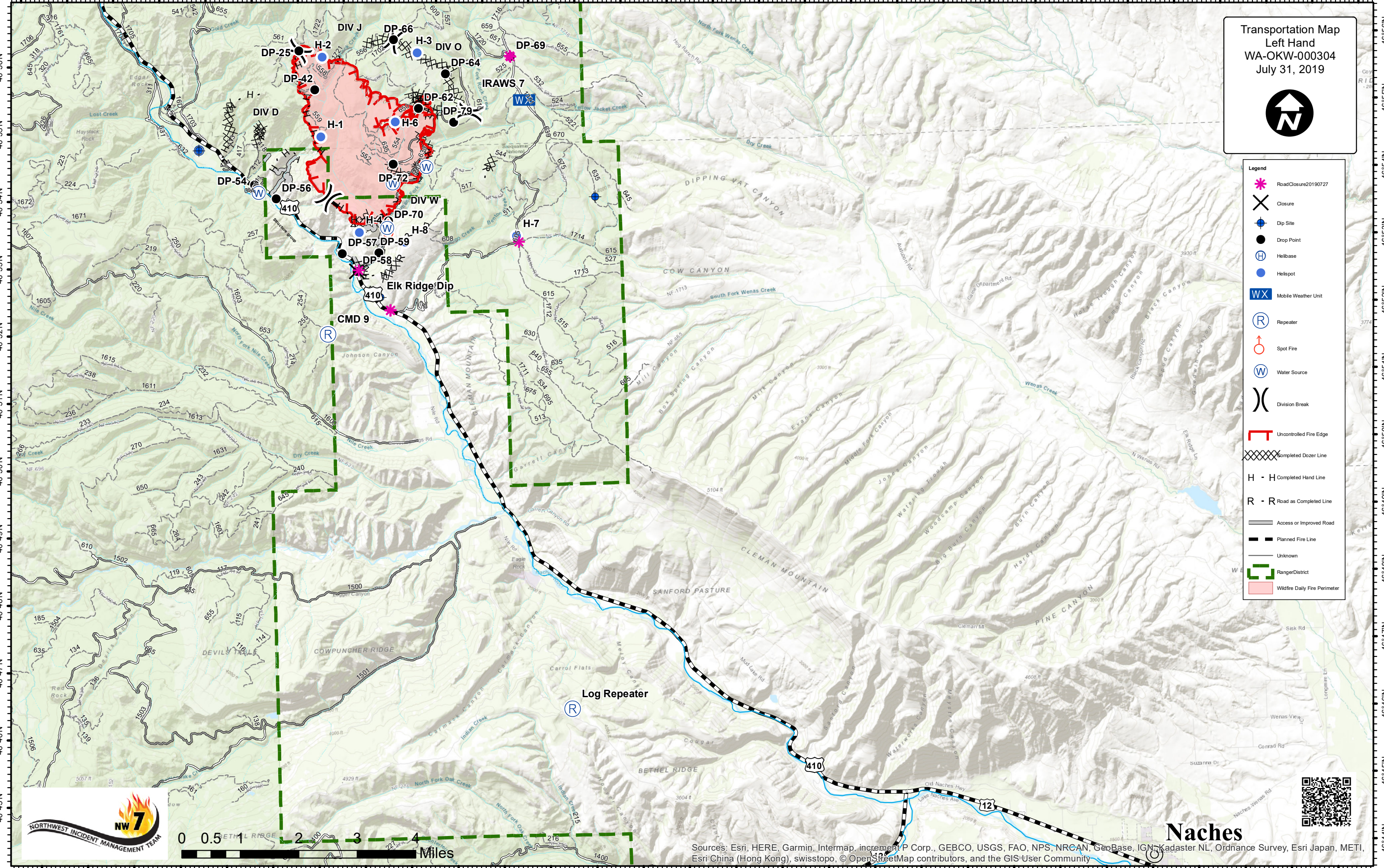


121°6'W 121°5'W 121°4'W 121°3'W 121°2'W 121°1'W 121°0'W 120°59'W 120°58'W 120°57'W 120°56'W 120°55'W 120°54'W 120°53'W 120°52'W 120°51'W 120°50'W 120°49'W 120°48'W 120°47'W 120°46'W 120°45'W 120°44'W 120°43'W 120°42'W 120°41'W 120°40'W 120°39'W 120°38'W 120°37'W



Transportation Map
Left Hand
WA-OKW-000304
July 31, 2019



- Legend**
- RoadClosure20190727
 - Closure
 - Dip Site
 - Drop Point
 - Helibase
 - Helispot
 - Mobile Weather Unit
 - Repeater
 - Spot Fire
 - Water Source
 - Division Break
 - Uncontrolled Fire Edge
 - Completed Dozer Line
 - H - H Completed Hand Line
 - R - R Road as Completed Line
 - Access or Improved Road
 - Planned Fire Line
 - Unknown
 - Ranger District
 - Wildfire Daily Fire Perimeter



Naches

Sources: Esri, HERE, Garmin, Intermap, increment P Corp., GEBCO, USGS, FAO, NPS, NRCAN, GeoBase, IGN, Kadaster NL, Ordnance Survey, Esri Japan, METI, Esri China (Hong Kong), swisstopo, © OpenStreetMap contributors, and the GIS User Community

121°6'W 121°5'W 121°4'W 121°3'W 121°2'W 121°1'W 121°0'W 120°59'W 120°58'W 120°57'W 120°56'W 120°55'W 120°54'W 120°53'W 120°52'W 120°51'W 120°50'W 120°49'W 120°48'W 120°47'W 120°46'W 120°45'W 120°44'W 120°43'W 120°42'W 120°41'W 120°40'W 120°39'W 120°38'W

46°56'N
46°55'N
46°54'N
46°53'N
46°52'N
46°51'N
46°50'N
46°49'N
46°48'N
46°47'N
46°46'N
46°45'N
46°44'N

46°56'N
46°55'N
46°54'N
46°53'N
46°52'N
46°51'N
46°50'N
46°49'N
46°48'N
46°47'N
46°46'N
46°45'N
46°44'N