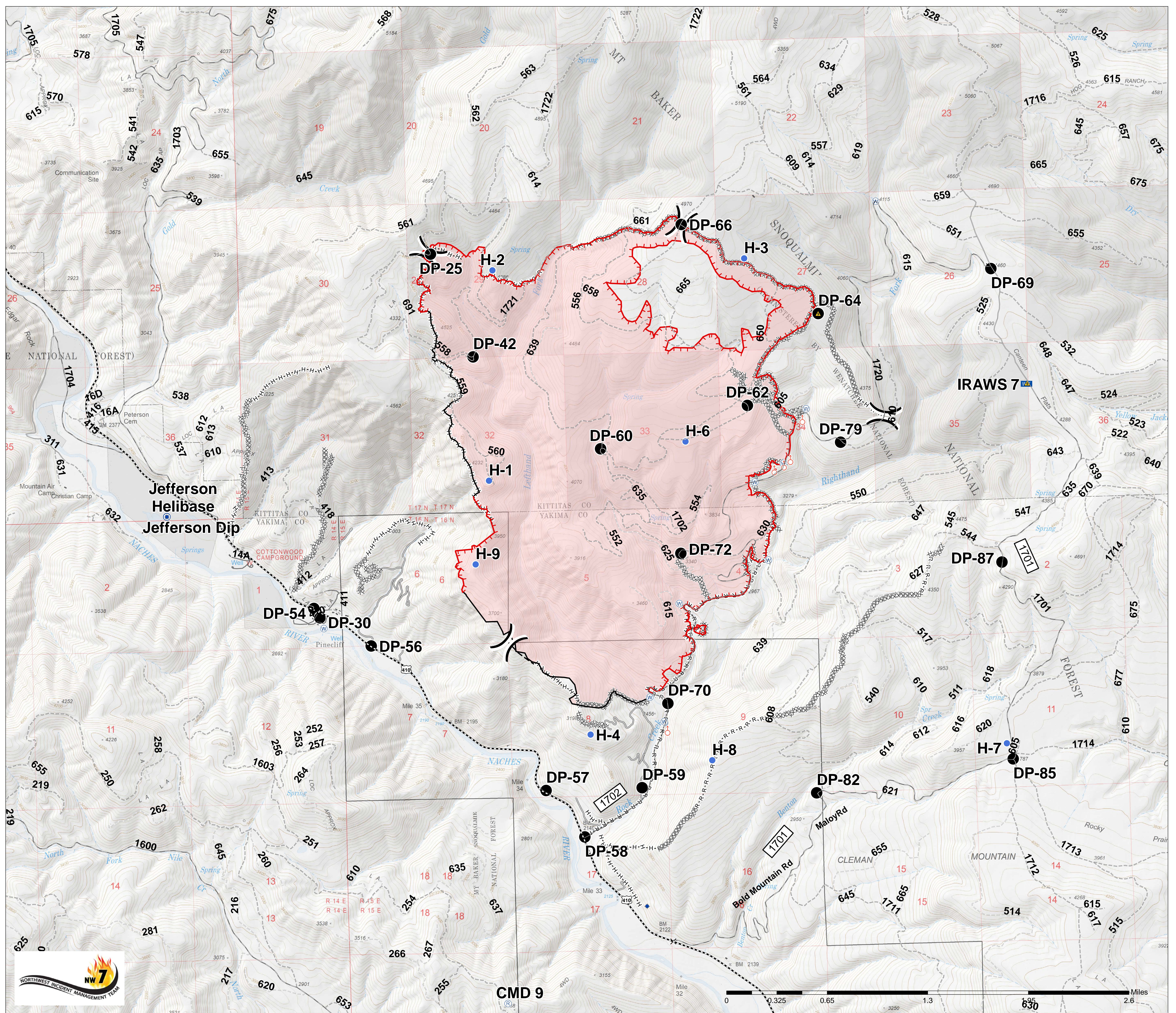


**Left Hand Fire
Roads
Operational Levels
WA-OWF-000304
August 1, 2019
3.123 ac
as of 2200 7/31/2019**

Legend

- Paved Road
- Gravel Road, Suitable for Passenger Car
- Dirt Road, Suitable for Passenger Car
- Road Not Suitable for Passenger Car
- Closed Road
- Maint. Level = Null
- Closure
- Dip Site
- Drop Point
- Helibase
- Helispot
- Mobile Weather Unit
- Repeater
- Safety Zone
- Spot Fire
- Water Source
- Division Break
- Uncontrolled Fire Edge
- Completed Line
- Completed Dozer Line
- Completed Hand Line
- Road as Completed Line
- Access or Improved Road
- Planned Fire Line
- Wildfire Daily Fire Perimeter

NAD 1983
Zone 10



CMD 9

