


119°24'W

119°23'W

119°22'W

Field Map
 Swanson Map
 WA-NES-1535
 07/05/2019

Appx 281 ac at
 07/04/20129



0 0.1 0.2
 Miles

48°51'N

48°51'N

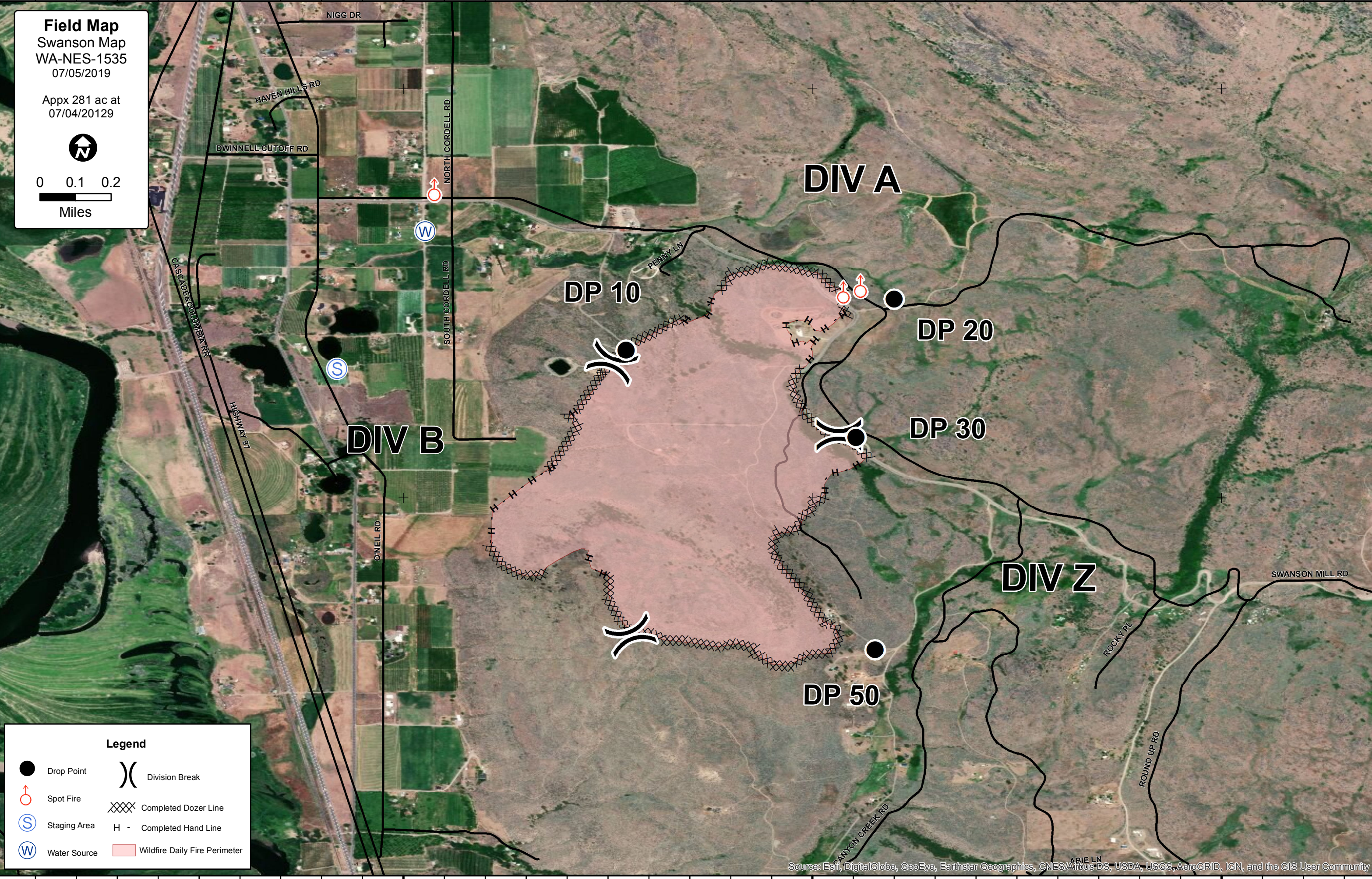
48°50'N

48°50'N

119°24'W

119°23'W

119°22'W



Legend

-  Drop Point
-  Spot Fire
-  Staging Area
-  Water Source
-  Division Break
-  Completed Dozer Line
-  Completed Hand Line
-  Wildfire Daily Fire Perimeter