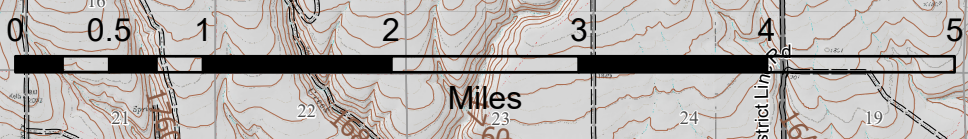
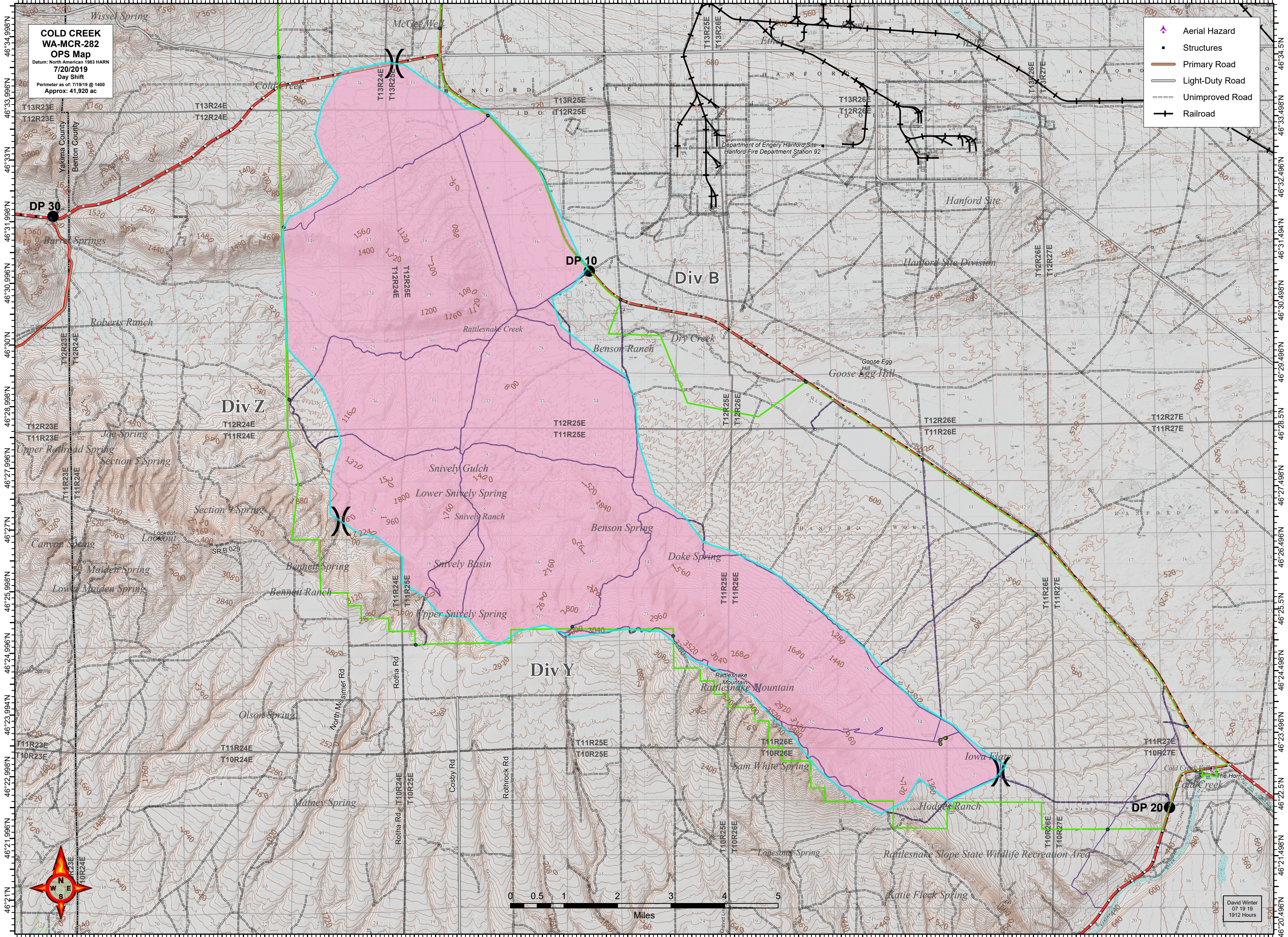


119°53.502'W 119°52.5'W 119°51.504'W 119°50.004'W 119°48.504'W 119°47.004'W 119°45.504'W 119°44.004'W 119°42.504'W 119°41.004'W 119°39.504'W 119°38.004'W 119°36.504'W 119°35.004'W 119°33.504'W 119°32.004'W 119°30.504'W 119°29.004'W 119°27.504'W 119°26.004'W 119°24.504'W

**COLD CREEK
WA-MCR-282
OPS Map**
Datum: North American 1983 HARN
7/20/2019
Day Shift
Perimeter as of: 7/19/19 @ 1400
Approx: 41,920 ac

- Aerial Hazard
- Structures
- Primary Road
- Light-Duty Road
- Unimproved Road
- Railroad



David Winter
07 19 19
1912 Hours

119°53.502'W 119°52.5'W 119°51.504'W 119°50.004'W 119°48.504'W 119°47.004'W 119°45.504'W 119°44.004'W 119°42.504'W 119°41.004'W 119°39.504'W 119°38.004'W 119°36.504'W 119°35.004'W 119°33.504'W 119°32.004'W 119°30.504'W 119°29.004'W 119°27.504'W 119°26.004'W 119°24.504'W