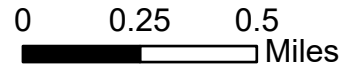
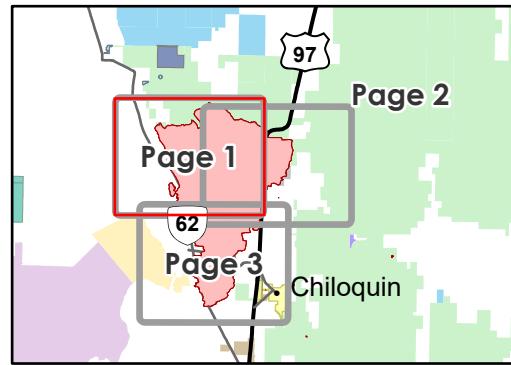


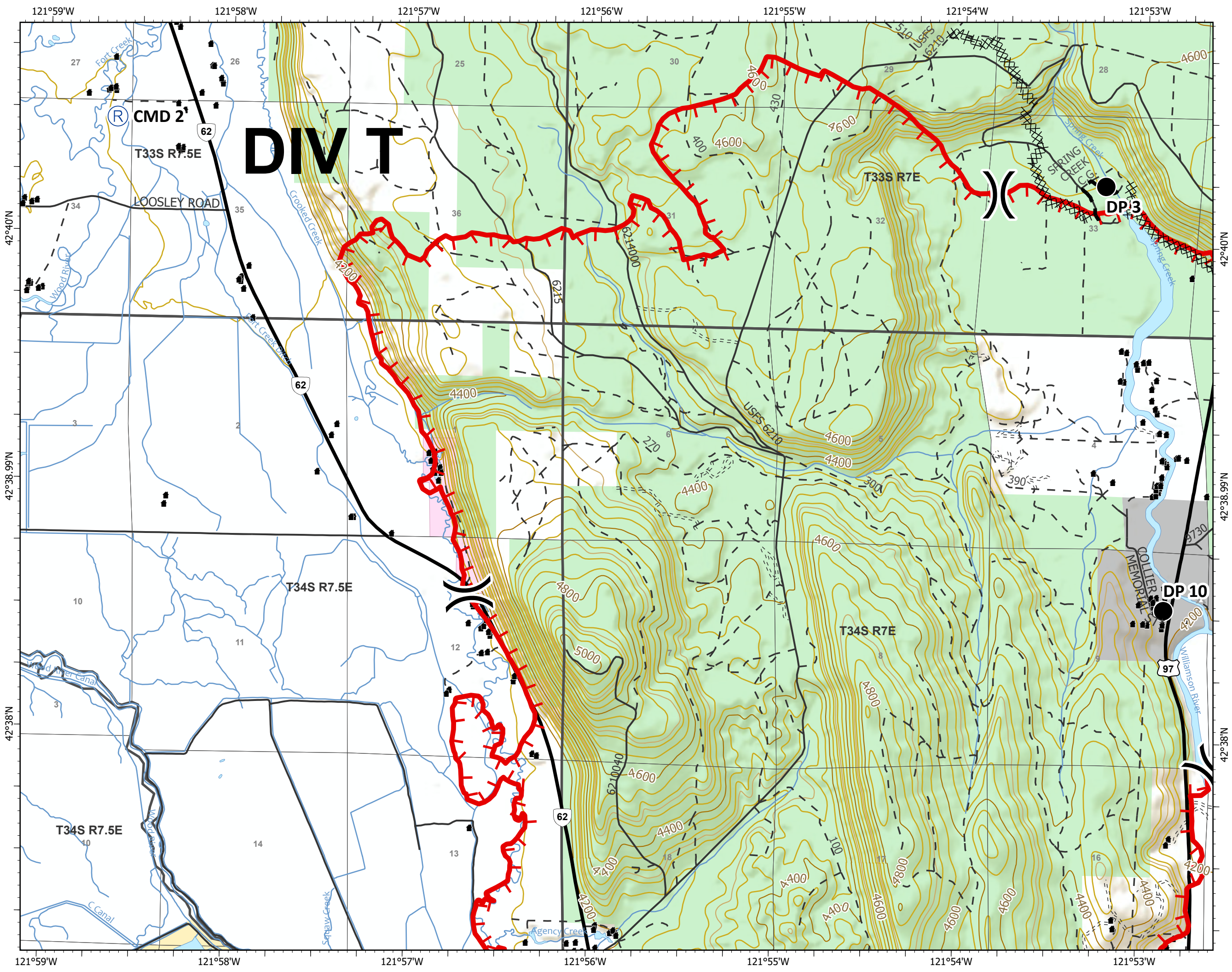
12,640 acres at 09/09/2020 @ 2129



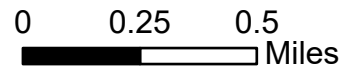
- Drop Point
- Repeater
- Division Break
- Uncontrolled Fire Edge
- Completed Dozer Line
- Completed Hand Line
- Planned Fire Line
- Structure
- Stream
- Oregon Dept of Fish and Wildlife
- Oregon Parks and Recreation Dept
- U.S. Bureau of Land Management
- U.S. Forest Service





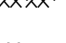
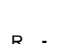



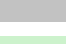
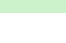


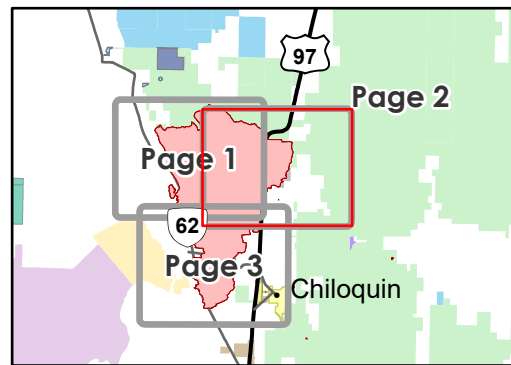
09/10/2020 2132
 Acres from DRTI
 North American 1983 Datum
 Lat Long Grid



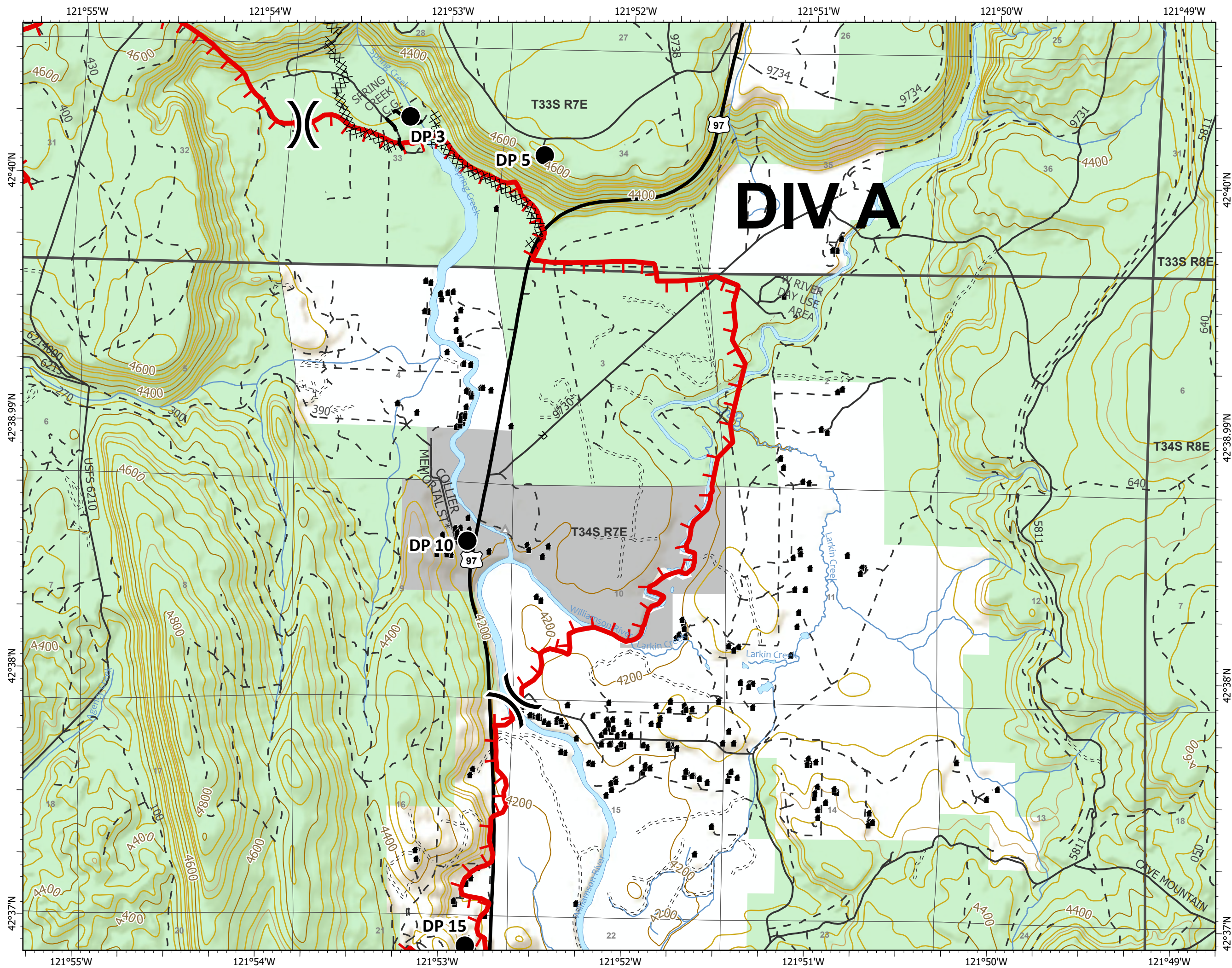
12,640 acres at 09/09/2020 @ 2129



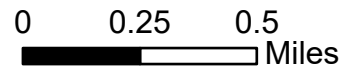
-  Drop Point
-  Division Break
-  Uncontrolled Fire Edge
-  Completed Dozer Line
-  Completed Hand Line
-  Road as Completed Line
-  Planned Fire Line
-  Structure
-  Stream
-  Oregon Parks and Recreation Dept
-  U.S. Forest Service



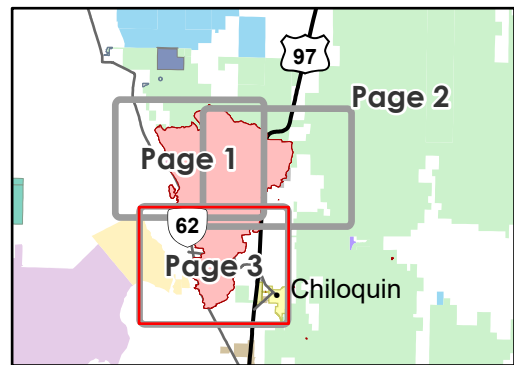
09/10/2020 2132
 Acres from DRTI
 North American 1983 Datum
 Lat Long Grid



12,640 acres at 09/09/2020 @ 2129



- Drop Point
- Gate
- Helibase
- Hot Spot
- Incident Command Post
- Water Source
- Value at Risk
- Fire Cache + Ground Support
- Division Break
- Uncontrolled Fire Edge
- Completed Dozer Line
- Road as Completed Line
- Structure
- Stream
- Oregon Other State Lands
- U.S. Bureau of Land Management
- U.S. Bureau of Indian Affairs & Tribal Trust
- U.S. Forest Service



09/10/2020 2132
 Acres from DRTI
 North American 1983 Datum
 Lat Long Grid

