

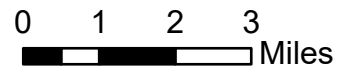
Air Ops

Two Four Two

OR981S07621

09/12/20 Day Shift

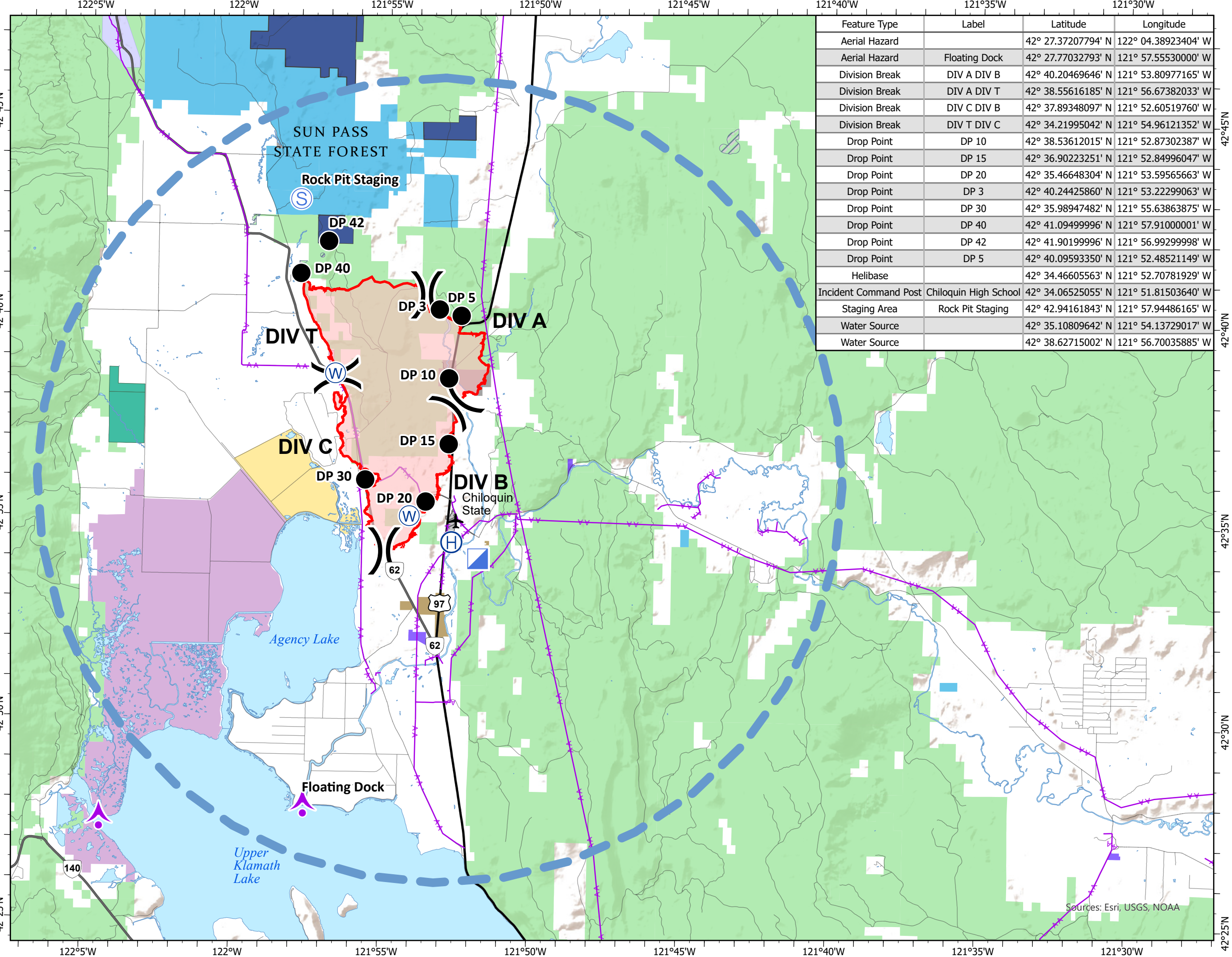
14,450 acres at 09/11/2020 @ 0030



- Aerial Hazard
- Drop Point
- Helibase
- Incident Command Post
- Staging Area
- Water Source
- Division Break
- Temporary Flight Restriction
- Wildfire Daily Fire Perimeter
- Retardant Avoidance Area
- Paved, shorter runway
- Electric Transmission Lines
- Waterbody
- Oregon Department of Forestry (ODF)
- Oregon Land Board Lands Managed by ODF
- Oregon Department of Fish and Wildlife
- Oregon Other State Lands
- Oregon Parks & Recreation Department
- Tribal Fee Lands
- United States National Park Service
- United States Fish and Wildlife Service
- Bureau of Land Management
- Bureau of Indian Affairs and Tribal Trust
- United States Forest Service
- Other Federal Lands



ODF IMT 2 GIS
09/11/2020 2201
Acres from DRTI
North American 1983 Datum
Lat Long Grid



Feature Type	Label	Latitude	Longitude
Aerial Hazard		42° 27.3720794' N	122° 04.38923404' W
Aerial Hazard	Floating Dock	42° 27.77032793' N	121° 57.55530000' W
Division Break	DIV A DIV B	42° 40.20469646' N	121° 53.80977165' W
Division Break	DIV A DIV T	42° 38.55616185' N	121° 56.67382033' W
Division Break	DIV C DIV B	42° 37.89348097' N	121° 52.60519760' W
Division Break	DIV T DIV C	42° 34.21995042' N	121° 54.96121352' W
Drop Point	DP 10	42° 38.53612015' N	121° 52.87302387' W
Drop Point	DP 15	42° 36.90223251' N	121° 52.84996047' W
Drop Point	DP 20	42° 35.46648304' N	121° 53.59565663' W
Drop Point	DP 3	42° 40.24425860' N	121° 53.22299063' W
Drop Point	DP 30	42° 35.98947482' N	121° 55.63863875' W
Drop Point	DP 40	42° 41.09499996' N	121° 57.91000001' W
Drop Point	DP 42	42° 41.90199996' N	121° 56.99299998' W
Drop Point	DP 5	42° 40.09593350' N	121° 52.48521149' W
Helibase		42° 34.46605563' N	121° 52.70781929' W
Incident Command Post	Chiloquin High School	42° 34.06525055' N	121° 51.81503640' W
Staging Area	Rock Pit Staging	42° 42.94161843' N	121° 57.94486165' W
Water Source		42° 35.10809642' N	121° 54.13729017' W
Water Source		42° 38.62715002' N	121° 56.70035885' W

Sources: Esri, USGS, NOAA