

IAP

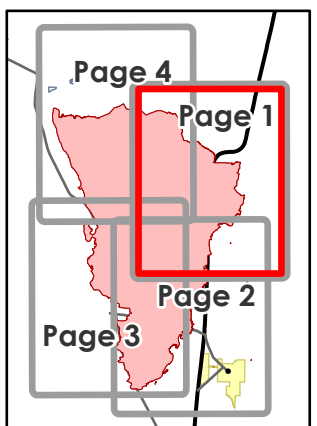
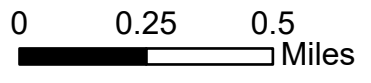
Two Four Two
OR981S07621

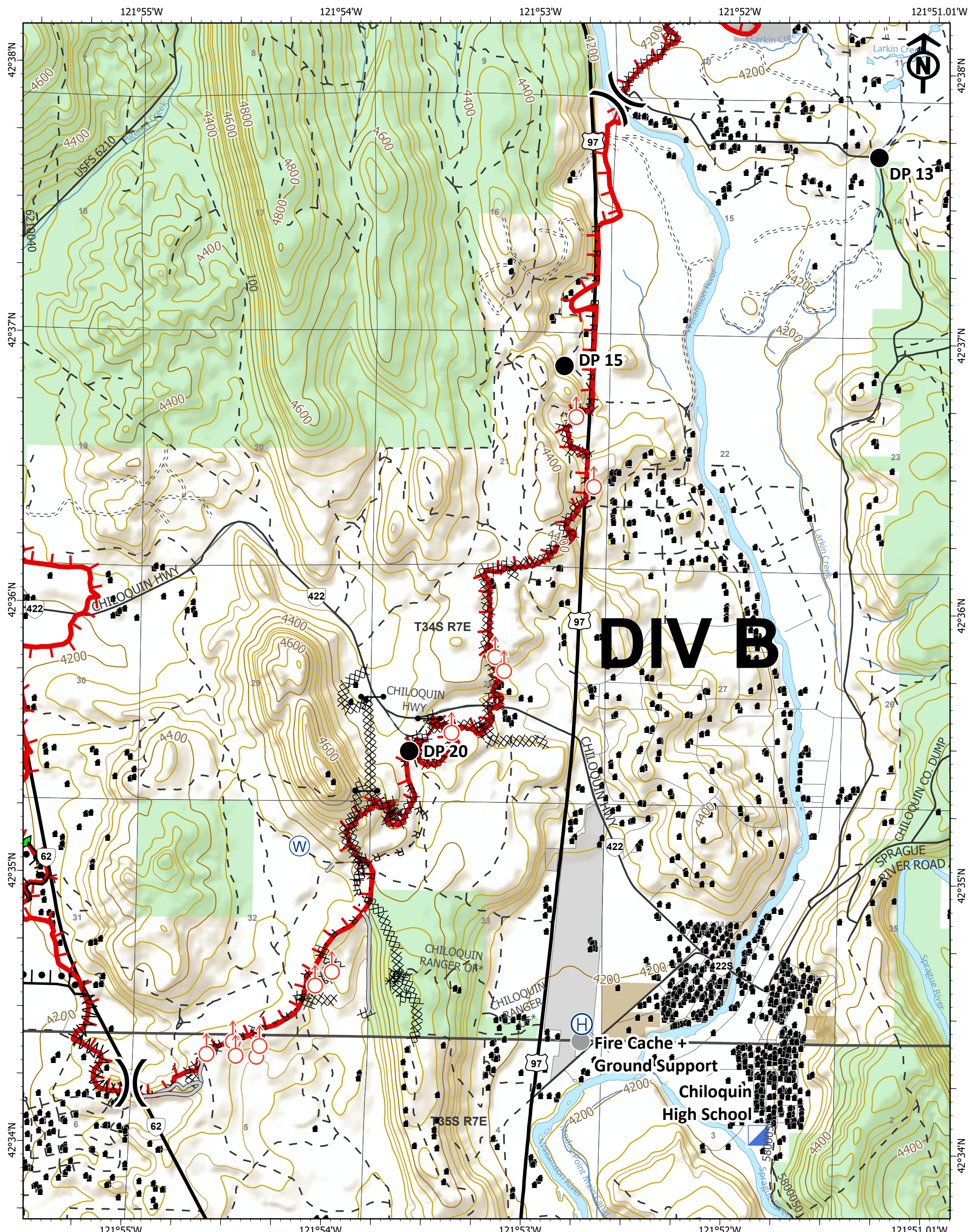
09/12/2020 Night Shift
Page 1 of 4
14,450 acres at 09/11/2020 @ 0030

- Drop Point
-) Division Break

- ▬ Uncontrolled Fire Edge
- XXXX Completed Dozer Line

- H - Completed Hand Line
- R - Road as Completed Line
- Structure
- Oregon Parks and Recreation Dept
- U.S. Forest Service





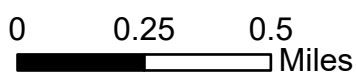
DIV B

IAP

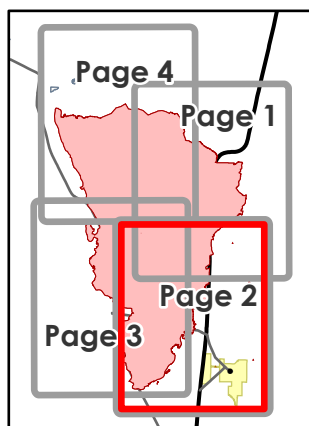
Two Four Two
OR981S07621

09/12/2020 Night Shift
Page 2 of 4

14,450 acres at 09/11/2020 @ 0030

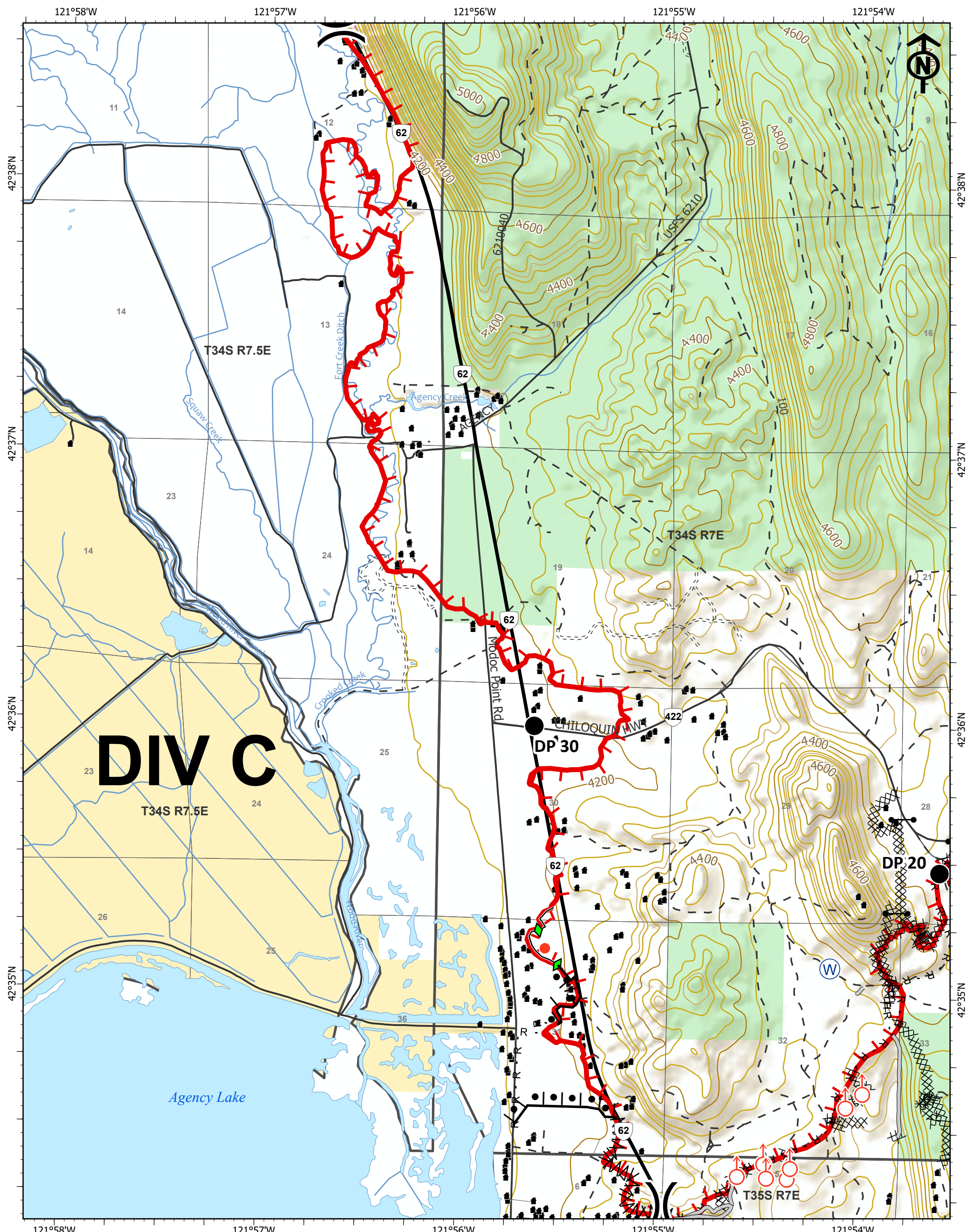


- Drop Point
- Gate
- (H) Helibase
- Hot Spot
- ▢ Incident Command Post
- Spot Fire
- (W) Water Source
- Other
- ⌋ Division Break
- ▬ Uncontrolled Fire Edge
- ▬ Completed Dozer Line
- H - Completed Hand Line
- R Road as Completed Line
- ▬ Access or Improved Road
- ▬ Line Break Completed
- ▬ Completed Plow Line
- ▬ Completed Burnout
- Structure
- ▬ Oregon Other State Lands
- ▬ Oregon Parks and Recreation Dept
- ▬ U.S. Bureau of Indian Affairs & Tribal Trust
- ▬ U.S. Forest Service



09/12/2020 1250
Acres from DRTI
North American 1983 Datum
Lat Long Grid



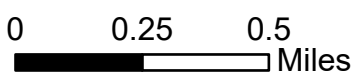


IAP

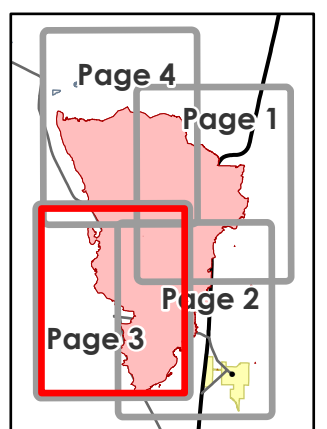
Two Four Two
OR981S07621

09/12/2020 Night Shift
Page 3 of 4

14,450 acres at 09/11/2020 @ 0030

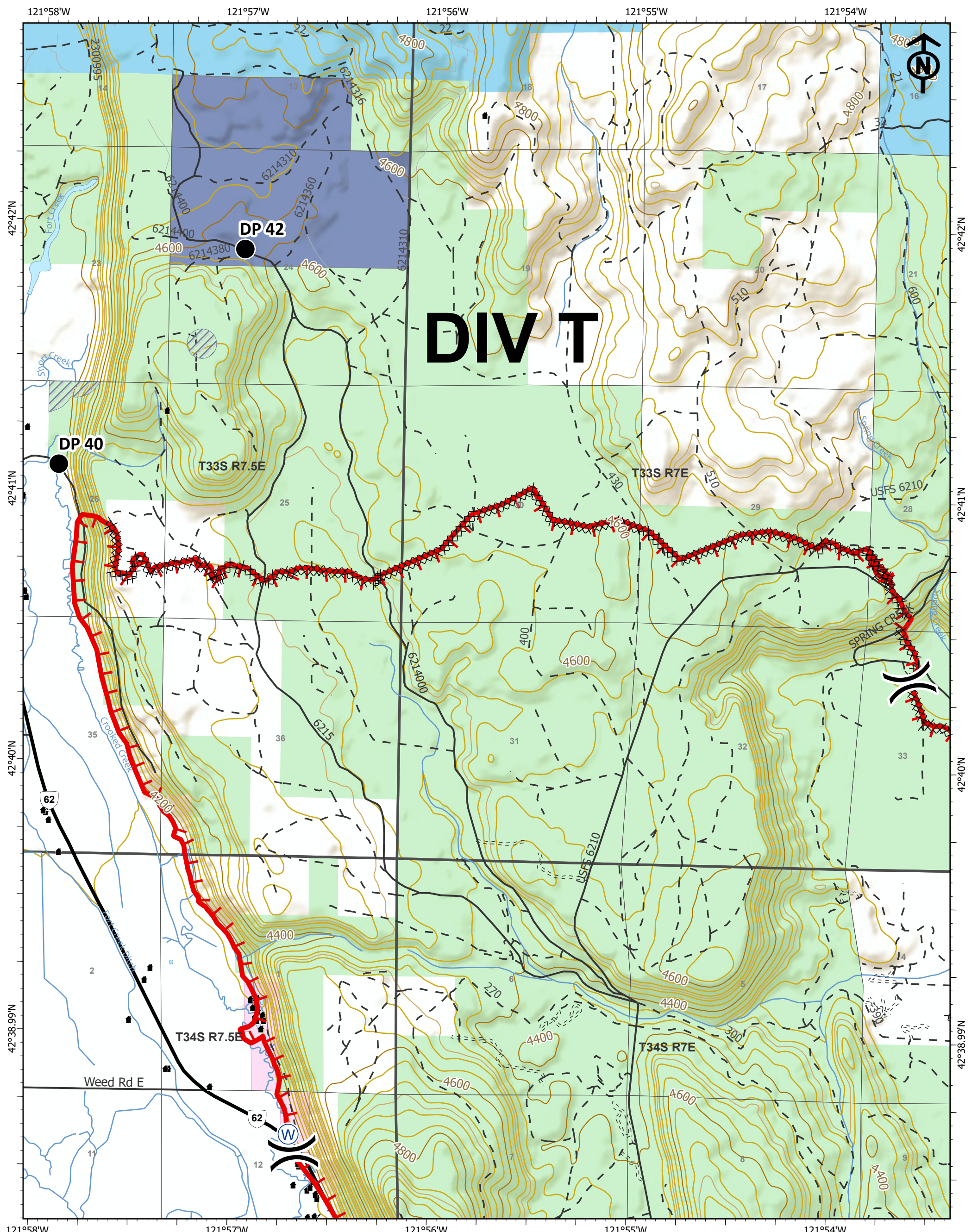


- Drop Point
- Gate
- Hot Spot
- Spot Fire
- (W) Water Source
-) Division Break
- R - Road as Completed Line
- Access or Improved Road
- ∩ Line Break Completed
- ◇ Completed Plow Line
- ⊥ Completed Burnout
- Structure
- Oregon Dept of Fish and Wildlife
- U.S. Bureau of Land Management
- U.S. Forest Service
- Uncontrolled Fire Edge
- XXXX Completed Dozer Line
- H - Completed Hand Line



09/12/2020 1250
Acres from DRTI
North American 1983 Datum
Lat Long Grid





DIV T

IAP
 Two Four Two
 OR981S07621
 09/12/2020 Night Shift
 Page 4 of 4
 14,450 acres at 09/11/2020 @ 0030

- Drop Point
- Ⓜ Water Source
- ⌋ Division Break
- Uncontrolled Fire Edge
- XXXX Completed Dozer Line
- H - Completed Hand Line

- R - Road as Completed Line
- ▨ Retardant Avoidance Area
- Structure
- Blue Oregon Dept of Forestry (ODF)
- Dark Blue Oregon Land Board Lands Managed by ODF
- Pink Oregon Dept of Fish and Wildlife
- Green U.S. Forest Service

