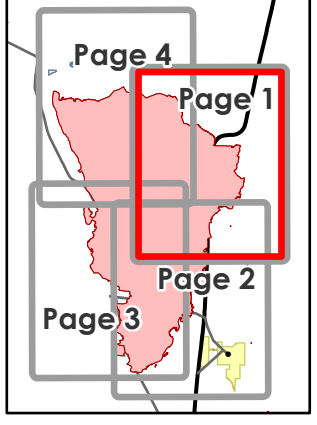
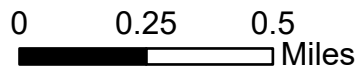


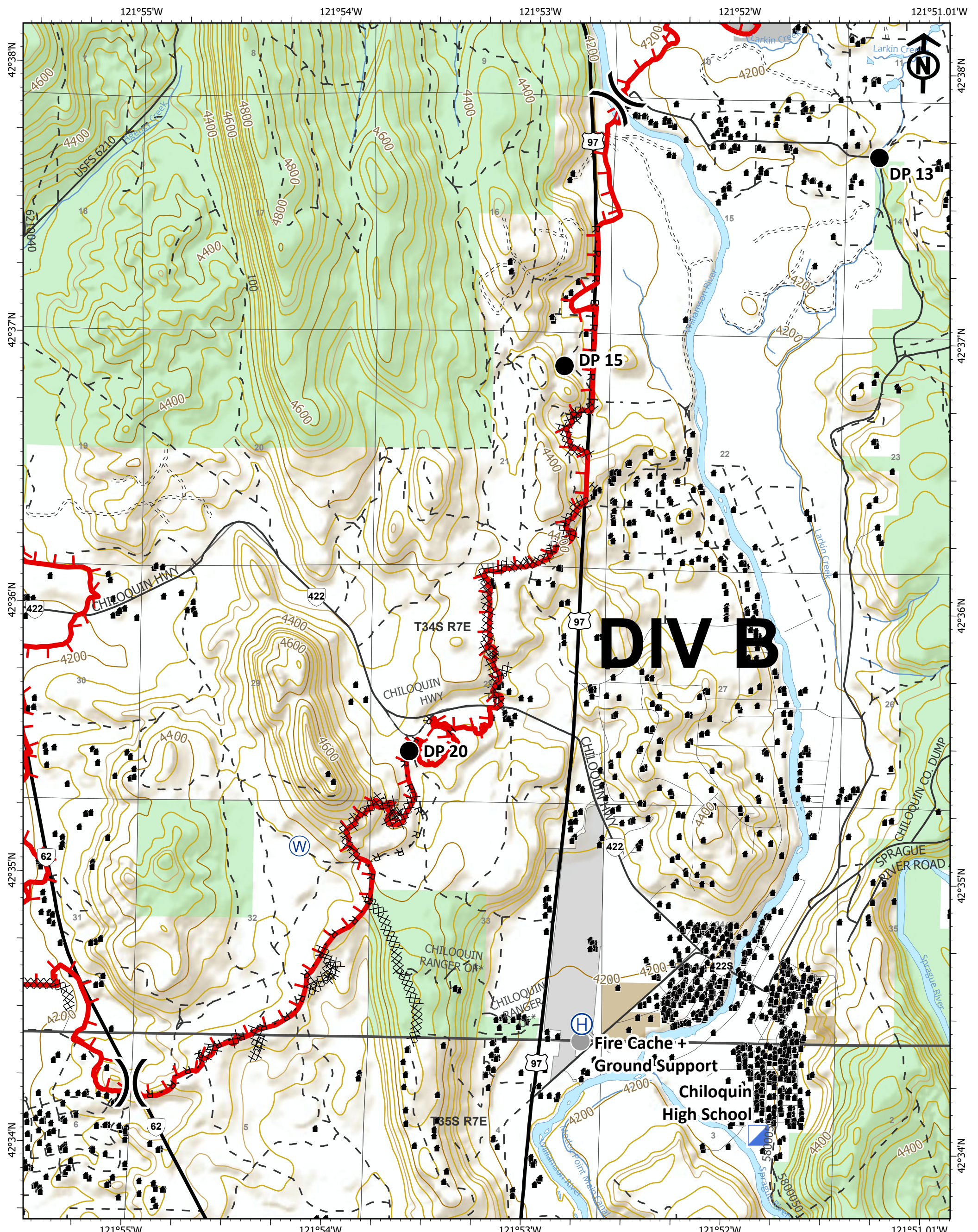
DIVA

IAP
 Two Four Two
 OR981S07621
 09/13/2020 Day Shift
 Page 1 of 4

14,450 acres at 09/11/2020 @ 0030

- Drop Point
- Ⓢ Staging Area
-) Division Break
- Uncontrolled Fire Edge
- XXXX Completed Dozer Line
- H - Completed Hand Line
- R - Road as Completed Line
- Structure
- Oregon Parks and Recreation Dept
- U.S. Forest Service



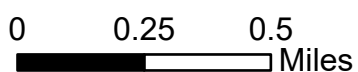


IAP

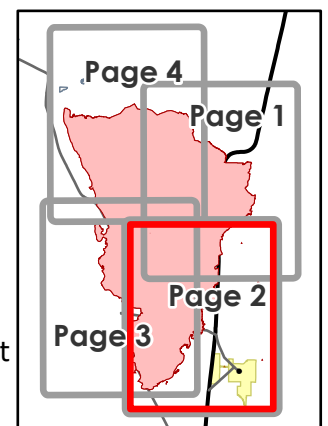
Two Four Two
OR981S07621

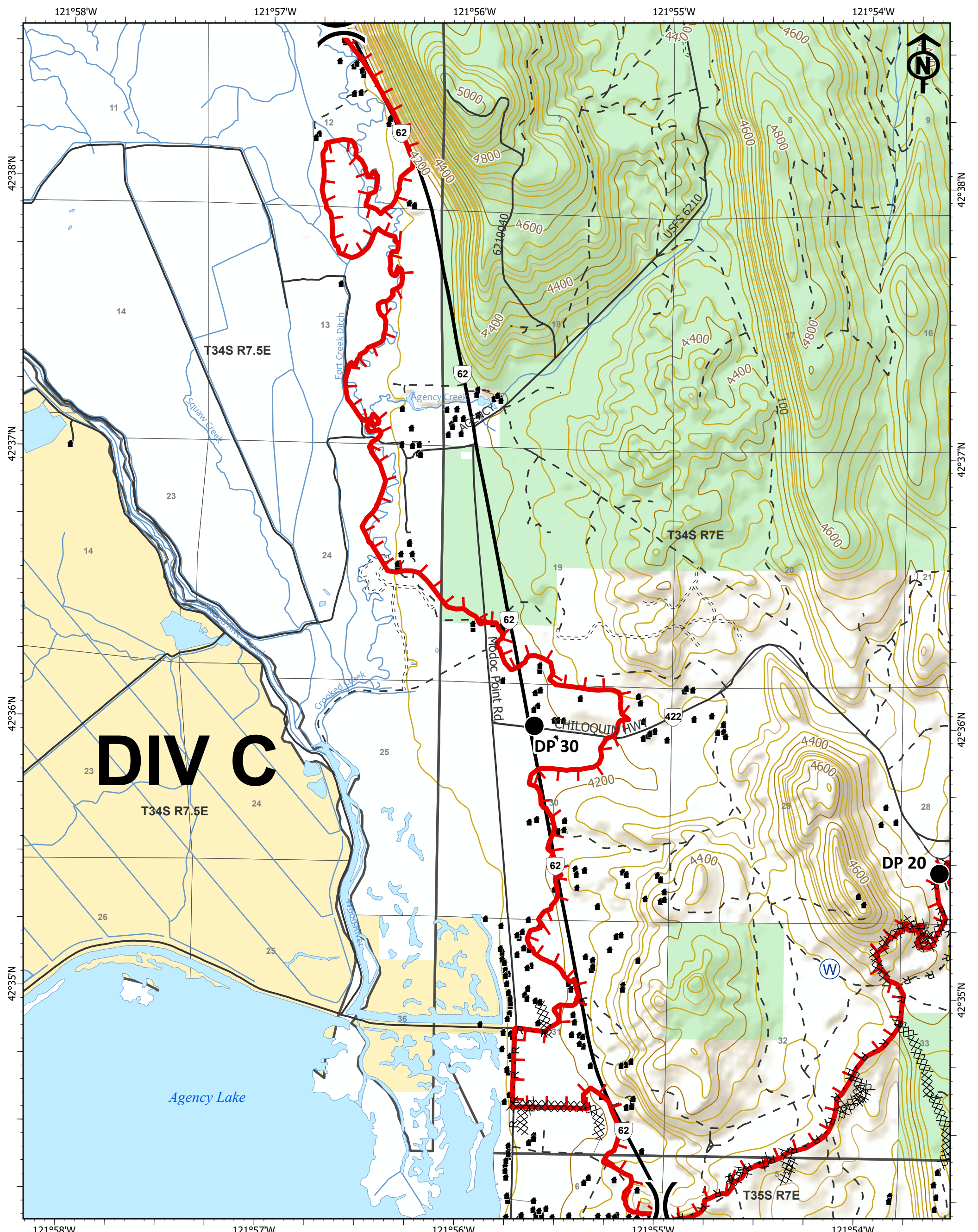
09/13/2020 Day Shift
Page 2 of 4

14,450 acres at 09/11/2020 @ 0030



- Drop Point
- Ⓜ Helibase
- ▣ Incident Command Post
- Ⓜ Water Source
- Other
- ⌋ Division Break
- Uncontrolled Fire Edge
- ⊗ Completed Dozer Line
- H - Completed Hand Line
- R - Road as Completed Line
- Structure
- Oregon Other State Lands
- Oregon Parks and Recreation Dept
- U.S. Bureau of Indian Affairs & Tribal Trust
- U.S. Forest Service

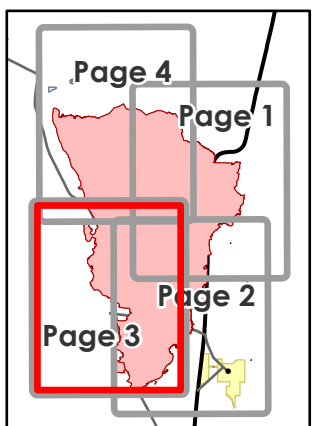
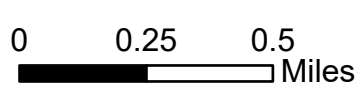


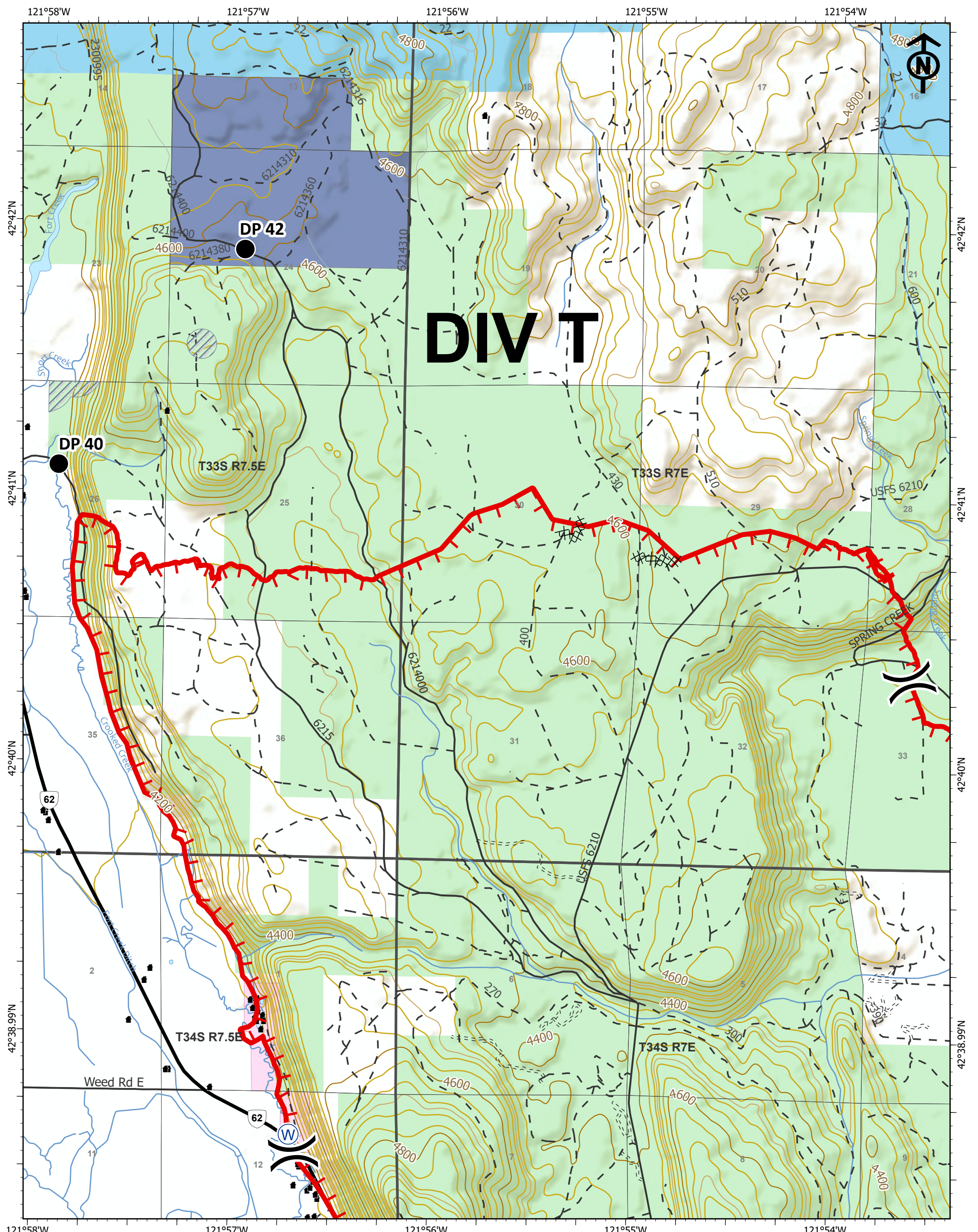


IAP
 Two Four Two
 OR981S07621
 09/13/2020 Day Shift
 Page 3 of 4
 14,450 acres at 09/11/2020 @ 0030

- Drop Point
- (W) Water Source
-) Division Break
- Uncontrolled Fire Edge
- XXXX Completed Dozer Line

- R - Road as Completed Line
- Structure
- Oregon Dept of Fish and Wildlife
- U.S. Bureau of Land Management
- U.S. Forest Service





IAP
 Two Four Two
 OR981S07621
 09/13/2020 Day Shift
 Page 4 of 4
 14,450 acres at 09/11/2020 @ 0030

- Drop Point
- Ⓜ Water Source
- ⌋ Division Break
- Uncontrolled Fire Edge
- XXXX Completed Dozer Line

- ▨ Retardant Avoidance Area
- Structure
- Oregon Dept of Forestry (ODF)
- Oregon Land Board Lands Managed by ODF
- Oregon Dept of Fish and Wildlife
- U.S. Forest Service

