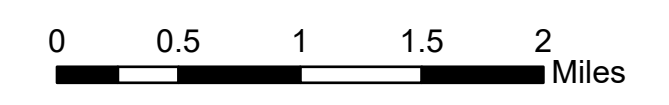


122°2'W 122°1'W 122°W 121°59'W 121°58'W 121°57'W 121°56'W 121°55'W 121°54'W 121°53'W 121°52'W 121°51.01'W 121°50'W 121°49'W 121°48'W 121°47'W 121°46'W

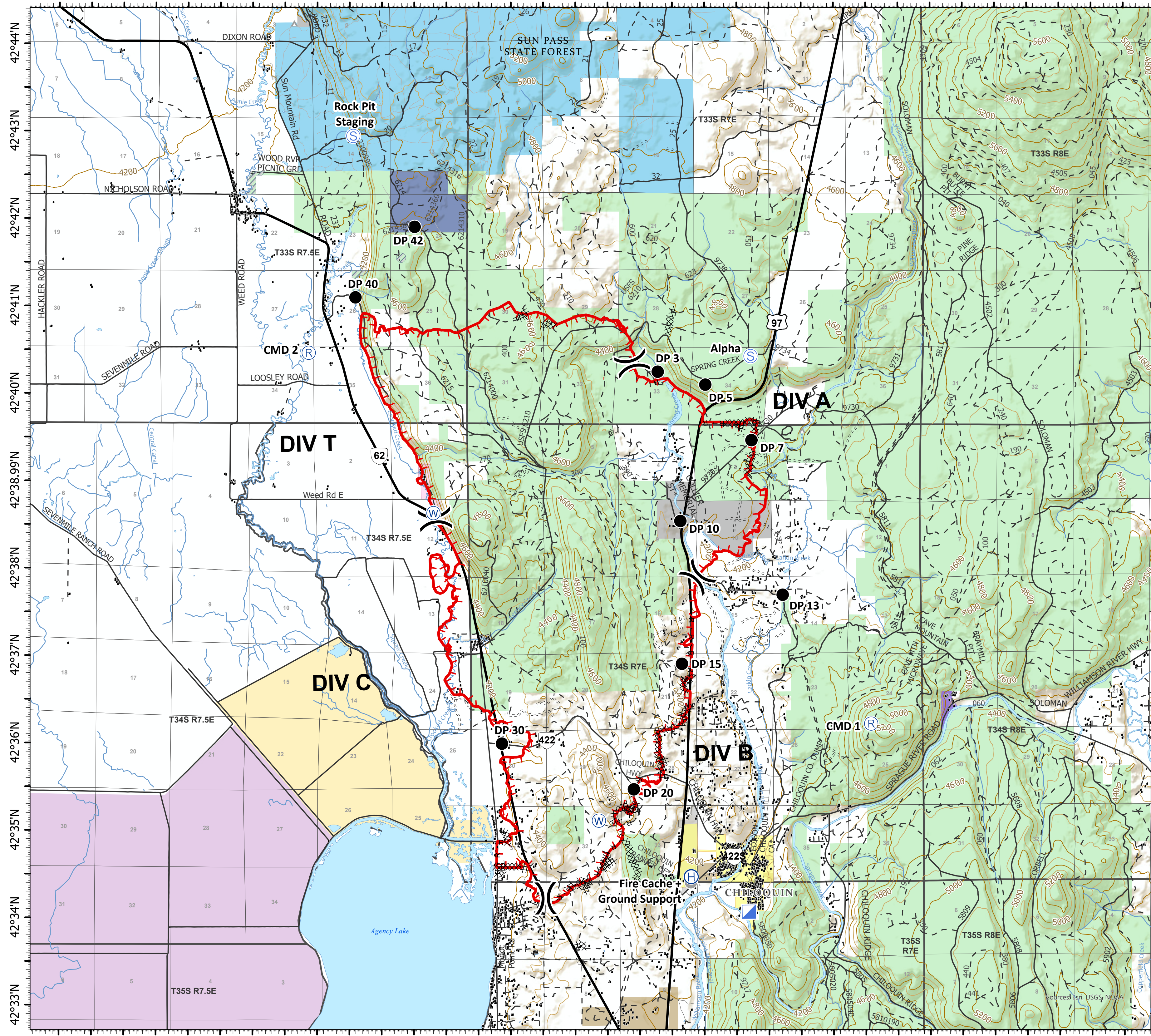
Planning

Two Four Two
OR981S07621
09/13/20 Day Shift

14,450 acres at 09/11/2020 @ 0030



- Drop Point
- ⊕ Helibase
- ▣ Incident Command Post
- Ⓡ Repeater
- Ⓢ Staging Area
- Ⓜ Water Source
- Fire Cache + Ground Support
-) Division Break
- Uncontrolled Fire Edge
- XXXX Completed Dozer Line
- H · H Completed Hand Line
- R · R Road as Completed Line
- ▨ Retardant Avoidance Area
- ▲ Campground
- Structure
- Waterbody
- Stream
- Oregon Department of Forestry (ODF)
- Oregon Land Board Lands Managed by ODF
- Oregon Department of Fish and Wildlife
- Oregon Other State Lands
- Oregon Parks and Recreation Department
- Tribal Fee Lands
- U.S. Fish and Wildlife Service
- U.S. Bureau of Land Management
- U.S. Bureau of Indian Affairs and Tribal Trust
- United States Forest Service
- City Limit



42°44'N
42°43'N
42°42'N
42°41'N
42°40'N
42°38.99'N
42°38'N
42°37'N
42°36'N
42°35'N
42°34'N
42°33'N

122°2'W 122°1'W 122°W 121°59'W 121°58'W 121°57'W 121°56'W 121°55'W 121°54'W 121°53'W 121°52'W 121°51.01'W 121°50'W 121°49'W 121°48'W 121°47'W 121°46'W

