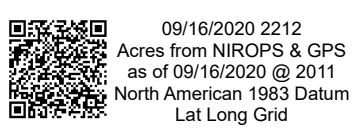
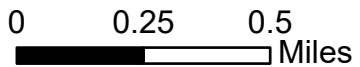
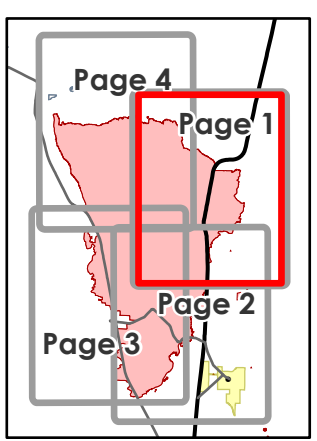


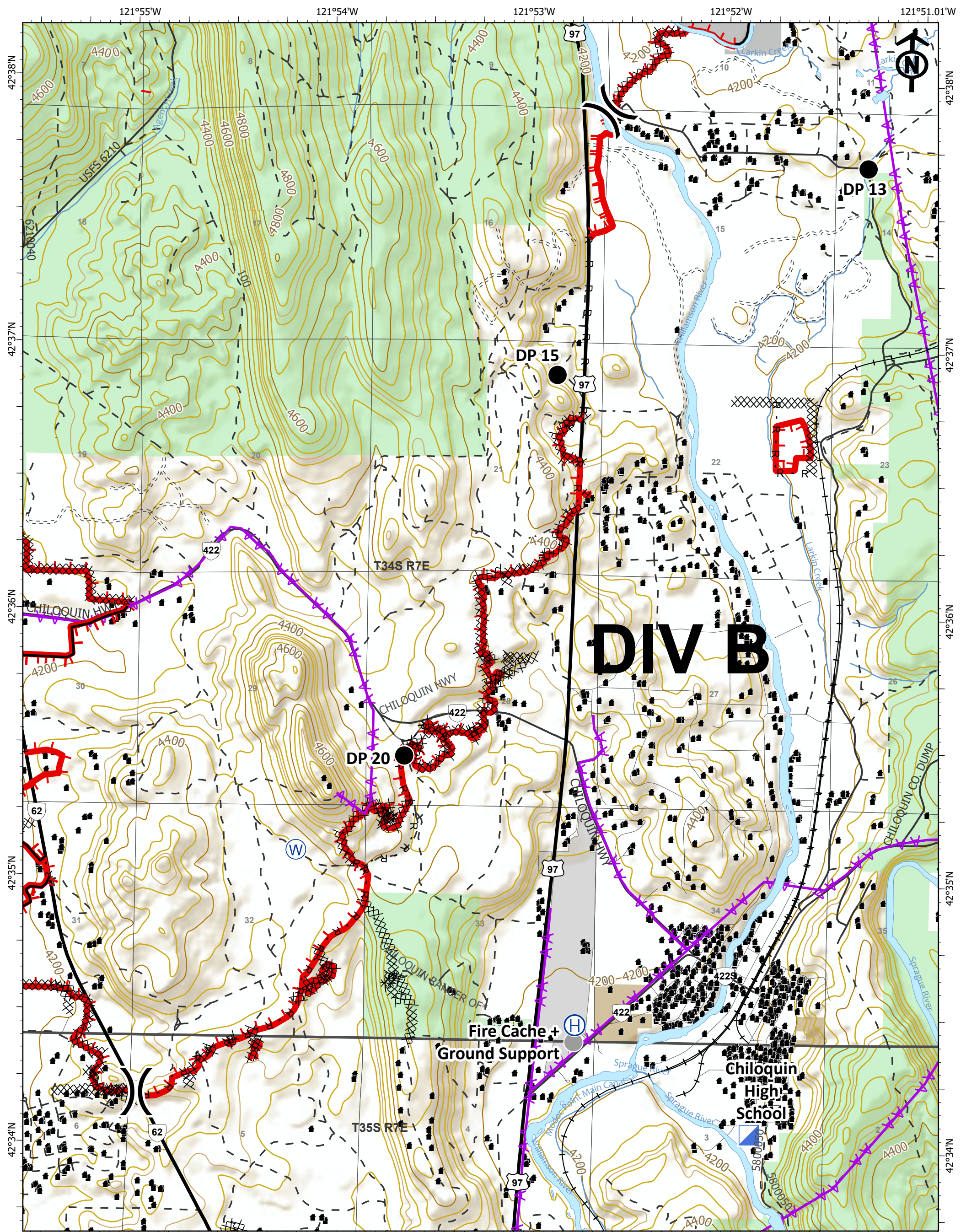
**IAP**  
 Two Four Two  
 OR981S07621  
 09/17/2020  
 Page 1 of 4  
 14,473 acres



- Drop Point
- Helispot
- (S) Staging Area
- (W) Water Source
- ) Division Break
- XXXXX Completed Dozer Line
- H - H Completed Hand Line
- R - R Road as Completed Line
- AA Aerial Hazard
- +— Railroad
- Structure
- Uncontrolled Fire Edge
- Contained Line
- Completed Dozer Line
- Completed Hand Line
- Road as Completed Line
- Aerial Hazard
- Railroad
- Structure
- Oregon Parks and Recreation Dept
- U.S. Forest Service

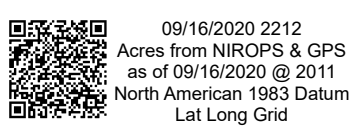
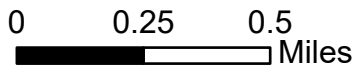




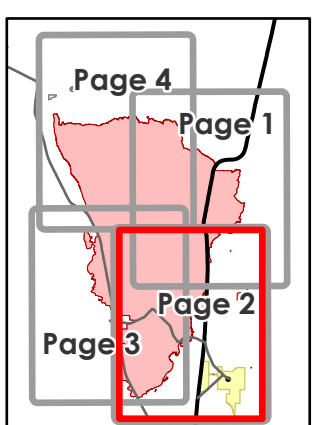


**DIV B**

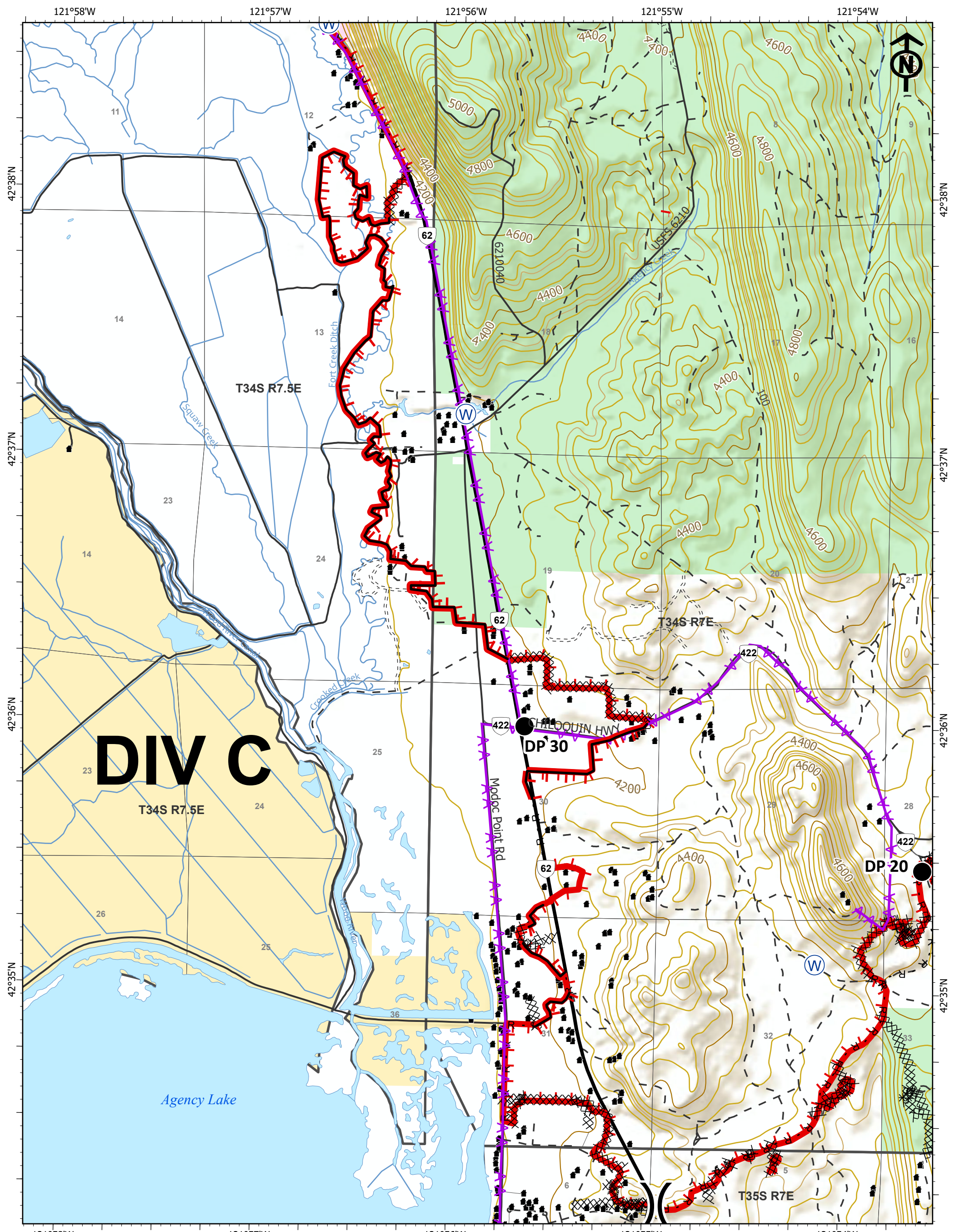
**IAP**  
 Two Four Two  
 OR981S07621  
 09/17/2020  
 Page 2 of 4  
 14,473 acres



- Drop Point
- Helibase
- Incident Command Post
- Water Source
- Fire Cache + Ground Support
- Division Break
- Uncontrolled Fire Edge
- Contained Line
- Completed Dozer Line
- Completed Hand Line
- Road as Completed Line
- Aerial Hazard
- Railroad
- Cold Trail
- Structure
- Oregon Other State Lands
- Oregon Parks and Recreation Dept
- U.S. Bureau of Indian Affairs & Tribal Trust
- U.S. Forest Service



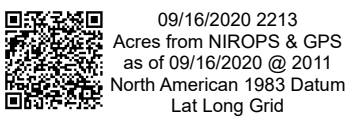




# IAP

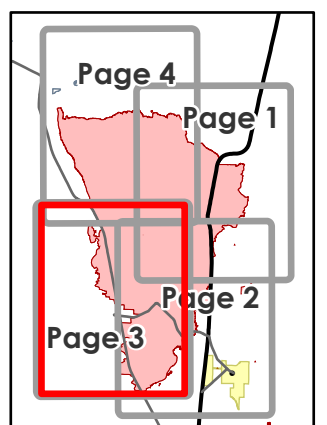
Two Four Two  
 OR981S07621  
 09/17/2020  
 Page 3 of 4  
 14,473 acres

0 0.25 0.5  
 Miles

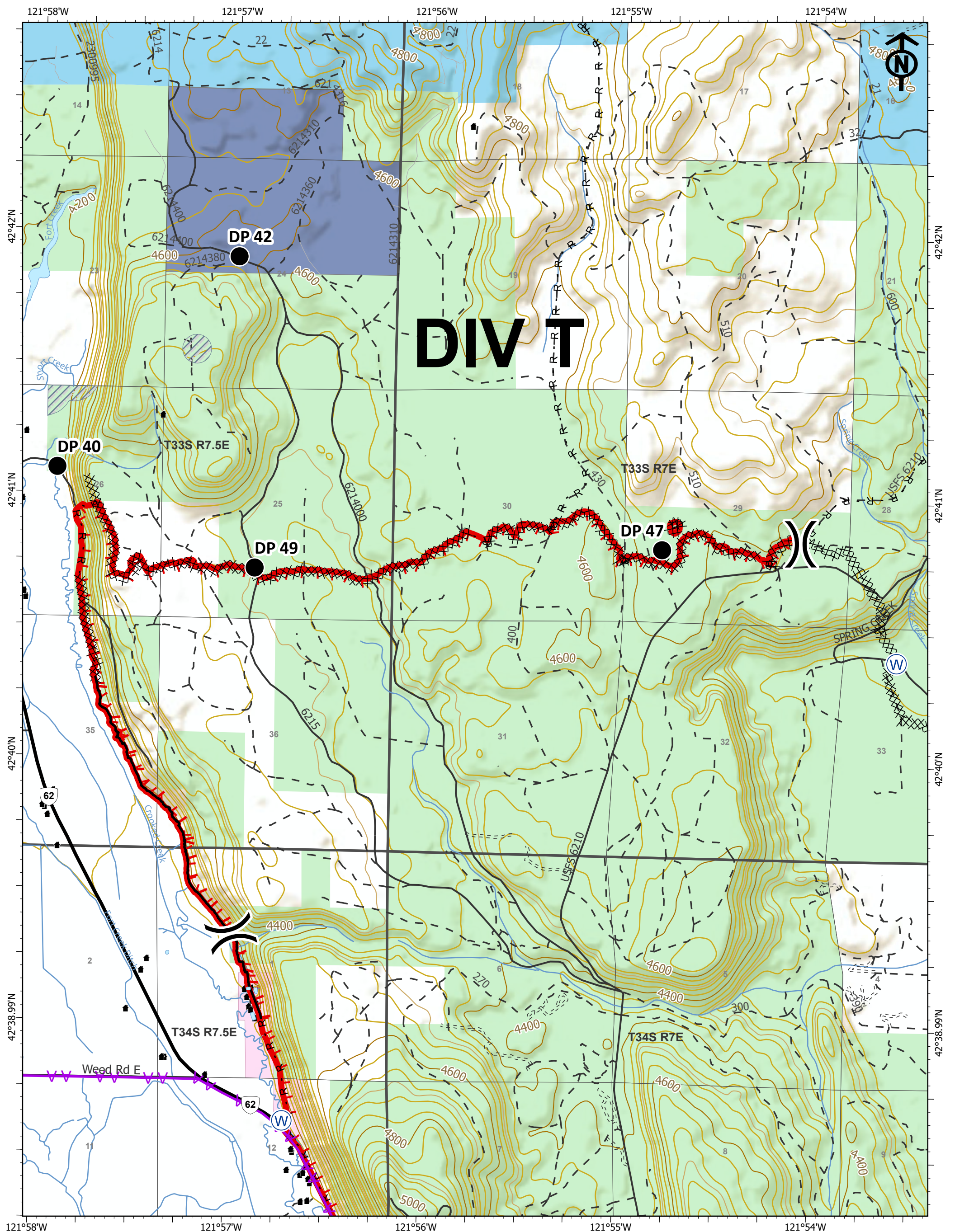


- Drop Point
- Ⓜ Water Source
- ⌋ Division Break
- |— Uncontrolled Fire Edge
- XXXXX Completed Dozer Line
- H - H Completed Hand Line

- R - R Road as Completed Line
- AA Aerial Hazard
- |— Cold Trail
- Structure
- Oregon Dept of Fish and Wildlife
- U.S. Bureau of Land Management
- U.S. Forest Service

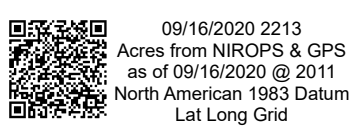
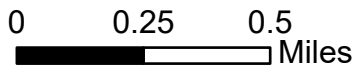






**DIV T**

**IAP**  
 Two Four Two  
 OR981S07621  
 09/17/2020  
 Page 4 of 4  
 14,473 acres



- Drop Point
- ⊙ Water Source
- ⌋ Division Break
- ▬ Uncontrolled Fire Edge
- XXXXX Completed Dozer Line
- H - H Completed Hand Line
- R - R Road as Completed Line

- AA Aerial Hazard
- ▬ Cold Trail
- ▨ Retardant Avoidance Area
- Structure
- Blue Oregon Dept of Forestry (ODF)
- Dark Blue Oregon Land Board Lands Managed by ODF
- Pink Oregon Dept of Fish and Wildlife
- Green U.S. Forest Service

