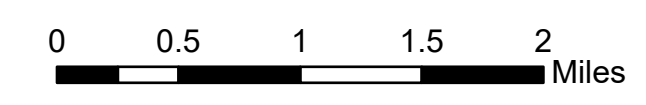


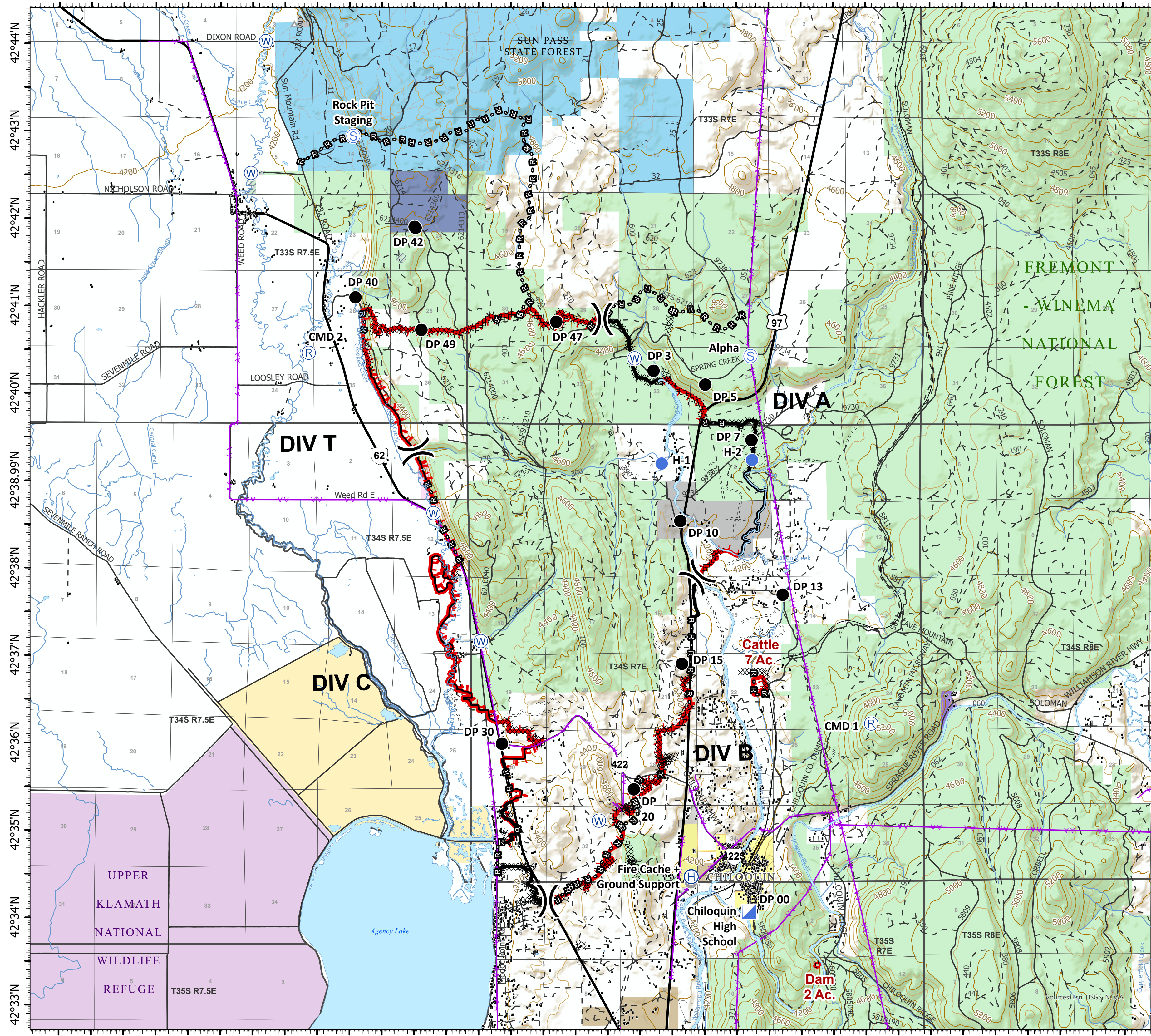
122°2'W 122°1'W 122°W 121°59'W 121°58'W 121°57'W 121°56'W 121°55'W 121°54'W 121°53'W 121°52'W 121°51.01'W 121°50'W 121°49'W 121°48'W 121°47'W 121°46'W

Planning

Two Four Two
OR981S07621
09/18/2020
14,473 acres



- Drop Point
- ⊕ Helibase
- Helispot
- ▣ Incident Command Post
- Ⓡ Repeater
- Ⓢ Staging Area
- Ⓜ Water Source
- Fire Cache + Ground Support
-) Division Break
- ▲ Campground
- Structure
- Railroads
- ▬ Uncontrolled Fire Edge
- ▬ Contained Line
- ▬ Cold Trail
- XXXXX Completed Dozer Line
- H - H Completed Hand Line
- Ⓡ-Ⓡ Road as Completed Line
- ⚡ Aerial Hazard
- ▭ Wildfire Daily Fire Perimeter
- ▨ Retardant Avoidance Area
- ~ Stream
- ▭ Waterbody
- ▭ Oregon Department of Forestry (ODF)
- ▭ Oregon Land Board Lands Managed by ODF
- ▭ Oregon Department of Fish and Wildlife
- ▭ Oregon Other State Lands
- ▭ Oregon Parks and Recreation Department
- ▭ Tribal Fee Lands
- ▭ U.S. Fish and Wildlife Service
- ▭ U.S. Bureau of Land Management
- ▭ U.S. Bureau of Indian Affairs and Tribal Trust
- ▭ United States Forest Service
- ▭ City Limit
- ~ Stream



122°2'W 122°1'W 122°W 121°59'W 121°58'W 121°57'W 121°56'W 121°55'W 121°54'W 121°53'W 121°52'W 121°51.01'W 121°50'W 121°49'W 121°48'W 121°47'W 121°46'W

ODF IMT 2 GIS
09/17/2020 21:39
Acres from NIREPS & GPS
as of 09/16/2020 @ 2011
North American 1983 Datum
Lat Long Grid