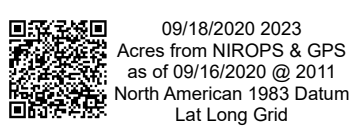
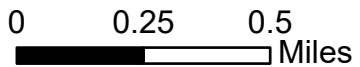
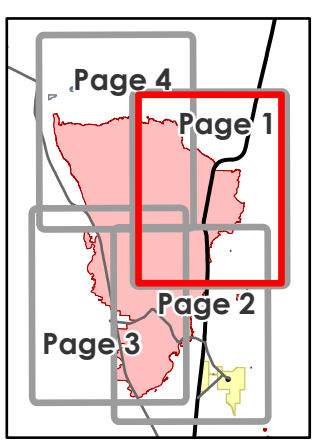
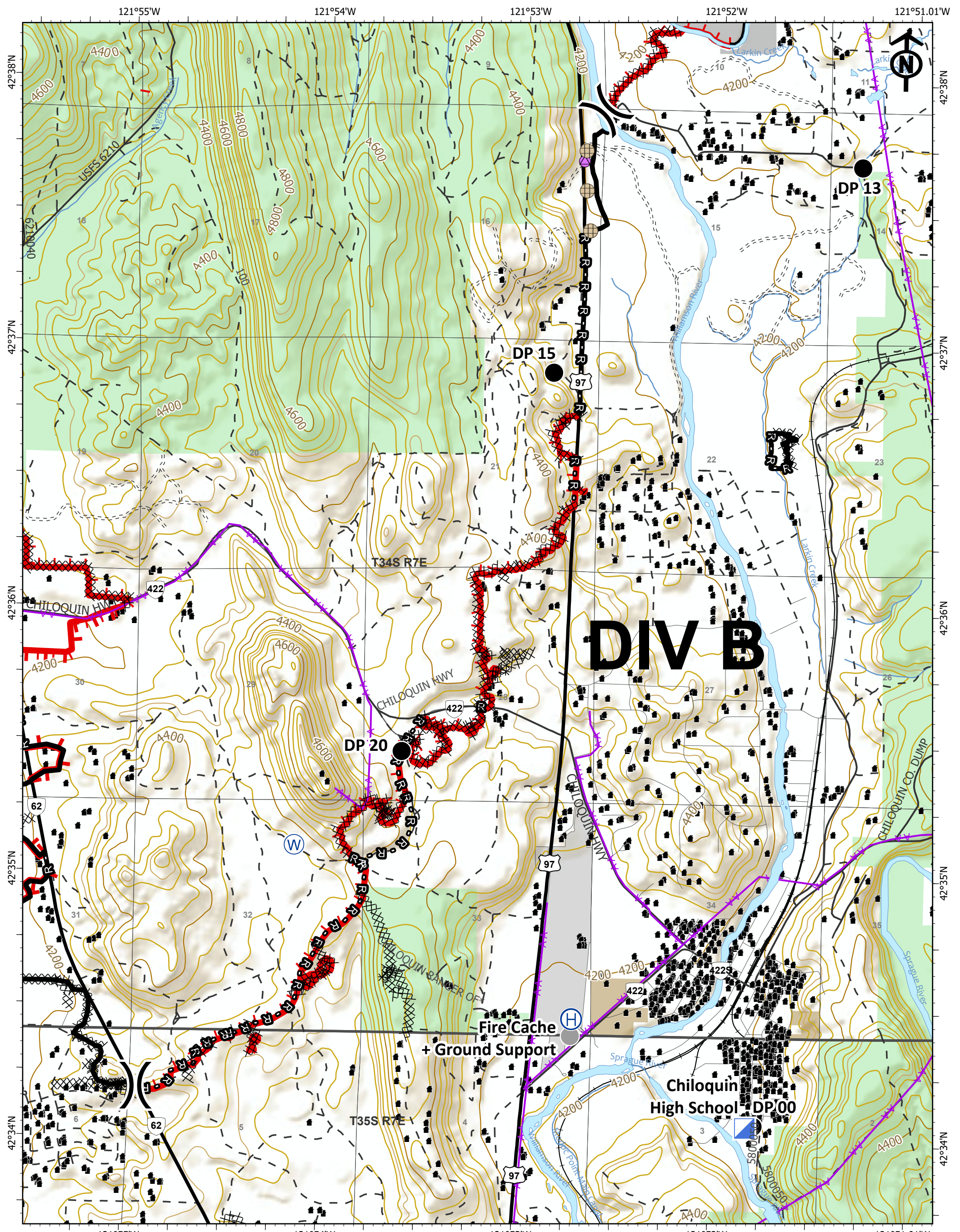


IAP
 Two Four Two
 OR981S07621
 09/19/2020
 Page 1 of 4
 14,473 acres

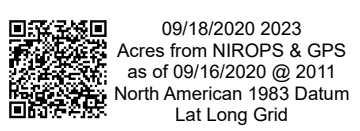
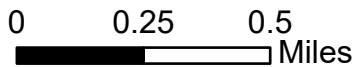


- Drop Point
- ⊗ Fence - Cut/Damaged
- Helispot
- ▲ Repair Point
- Ⓢ Staging Area
- Ⓜ Water Source
- ⌋ Division Break
- Structure
- Uncontrolled Fire Edge
- Contained Line
- ⊗ Completed Dozer Line
- H - Completed Hand Line
- R - Road as Completed Line
- ▲ Aerial Hazard
- - - Fence
- Railroads
- Oregon Parks and Recreation Dept
- U.S. Forest Service

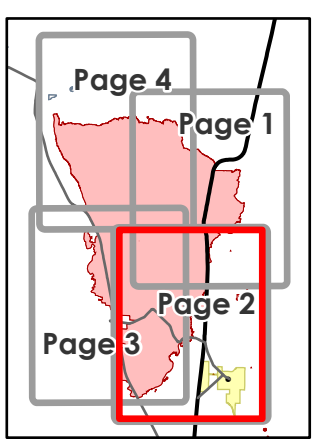


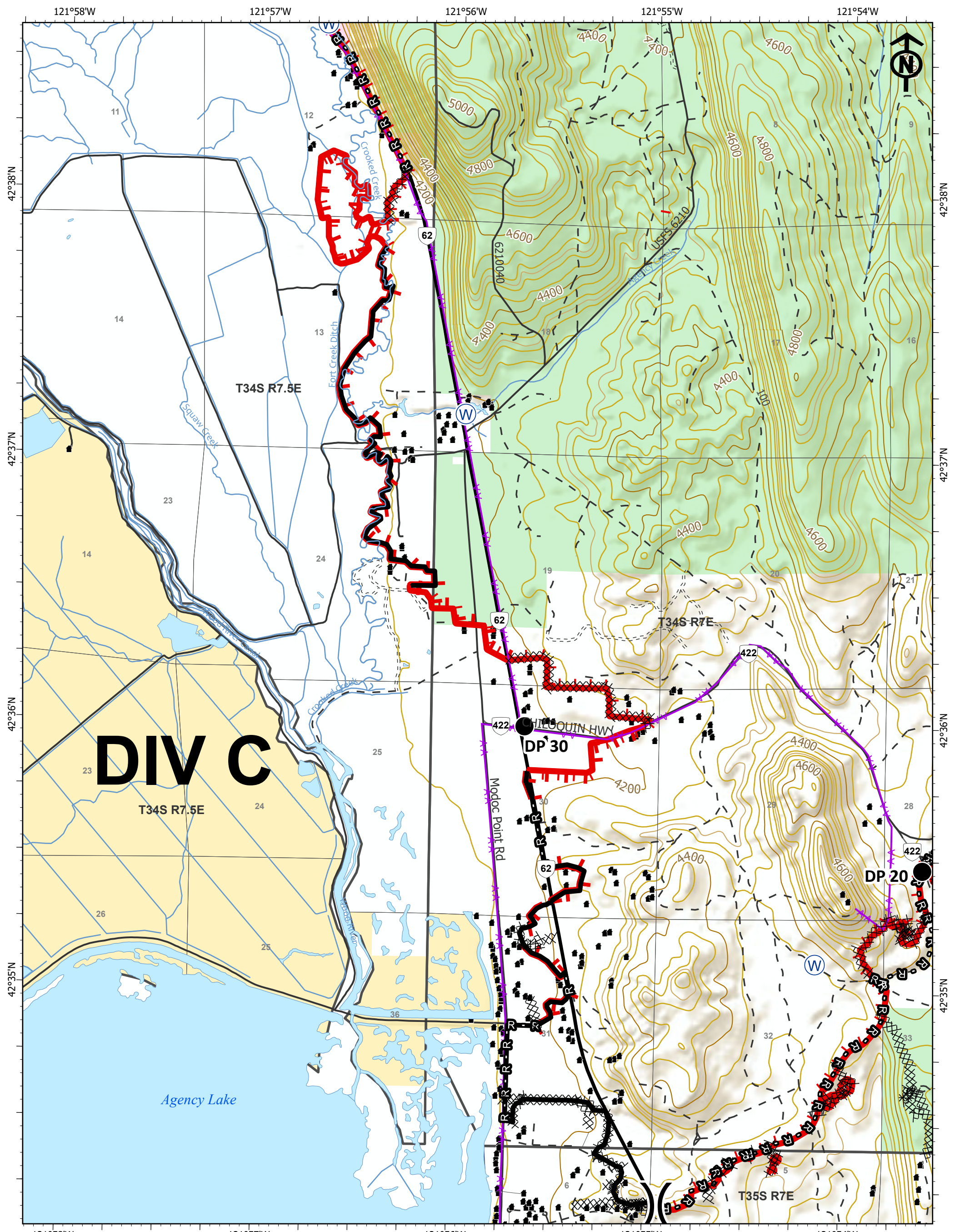


IAP
 Two Four Two
 OR981S07621
 09/19/2020
 Page 2 of 4
 14,473 acres



- | | | |
|-----------------------------|------------------------|----------------------------------------------|
| Drop Point | Division Break | Completed Hand Line |
| Fence - Cut/Damaged | Structure | Road as Completed Line |
| Helibase | Uncontrolled Fire Edge | Aerial Hazard |
| Incident Command Post | Contained Line | Railroads |
| Repair Point | Cold Trail | Oregon Other State Lands |
| Water Source | Completed Dozer Line | Oregon Parks and Recreation Dept |
| Fire Cache + Ground Support | | U.S. Bureau of Indian Affairs & Tribal Trust |
| | | U.S. Forest Service |

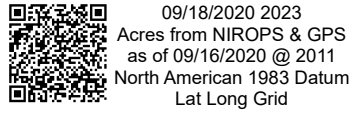
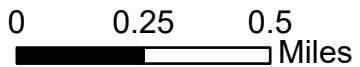




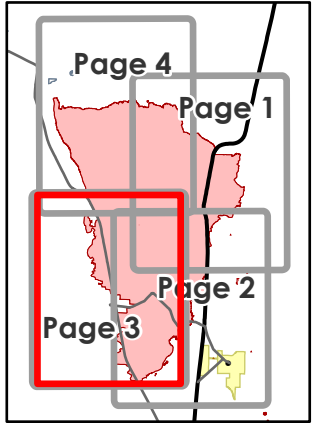
DIV C

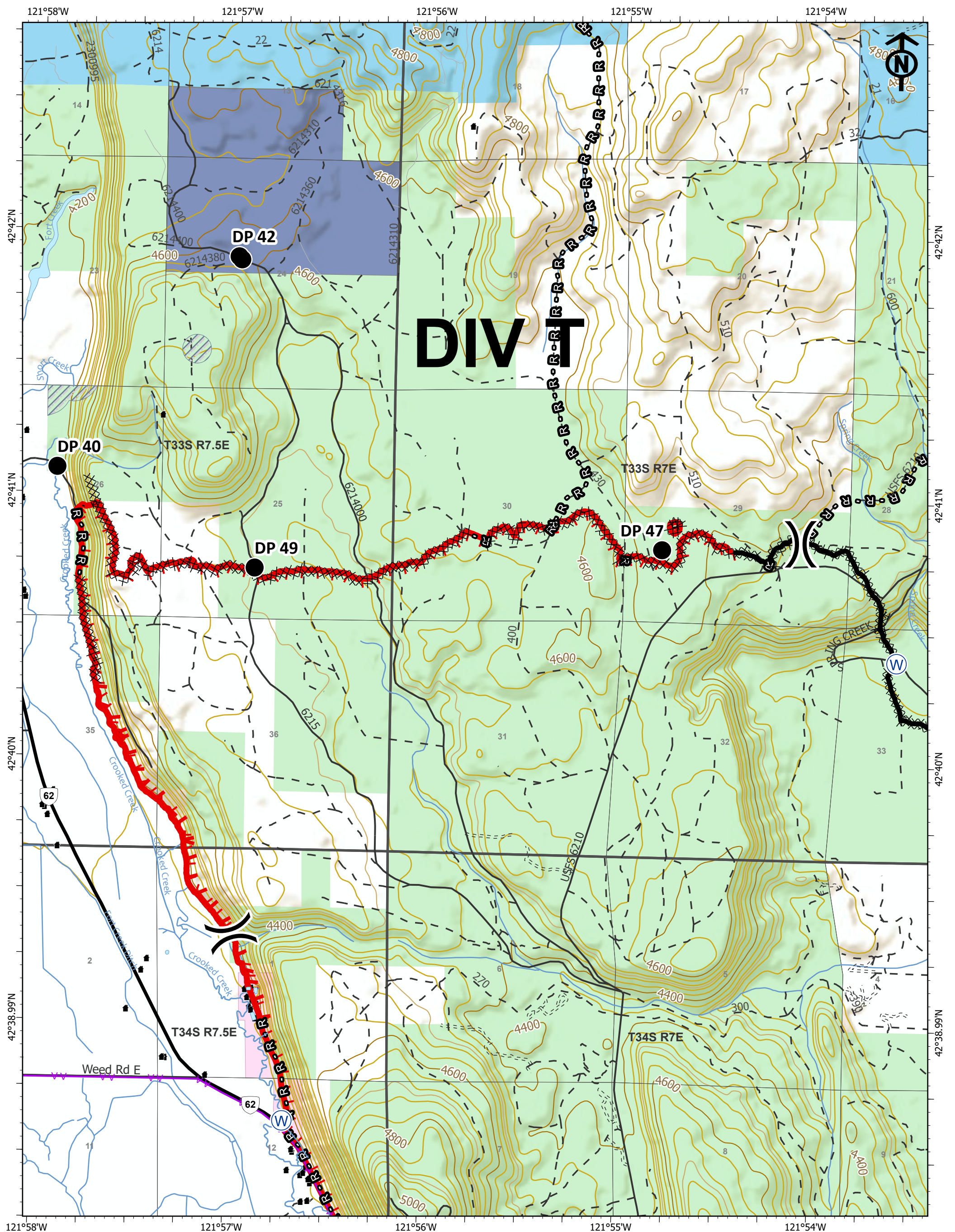
T34S R7.5E

IAP
 Two Four Two
 OR981S07621
 09/19/2020
 Page 3 of 4
 14,473 acres



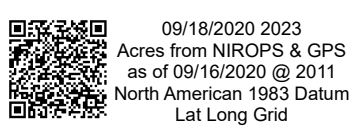
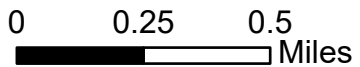
- Drop Point
- ⊙ Water Source
-) Division Break
- Structure
- Uncontrolled Fire Edge
- Contained Line
- Cold Trail
- XXXXX Completed Dozer Line
- H · H Completed Hand Line
- R · R Road as Completed Line
- Aerial Hazard
- Oregon Dept of Fish and Wildlife
- U.S. Bureau of Land Management
- U.S. Forest Service





DIV

IAP
 Two Four Two
 OR981S07621
 09/19/2020
 Page 4 of 4
 14,473 acres



- Drop Point
- Water Source
- Division Break
- Structure
- Uncontrolled Fire Edge
- Contained Line
- Cold Trail
- Completed Dozer Line
- Completed Hand Line
- Road as Completed Line
- Aerial Hazard
- Retardant Avoidance Area
- Oregon Dept of Forestry (ODF)
- Oregon Land Board Lands Managed by ODF
- Oregon Dept of Fish and Wildlife
- U.S. Forest Service

