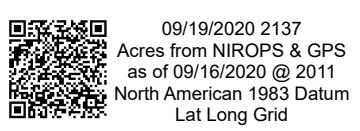
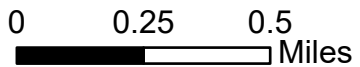
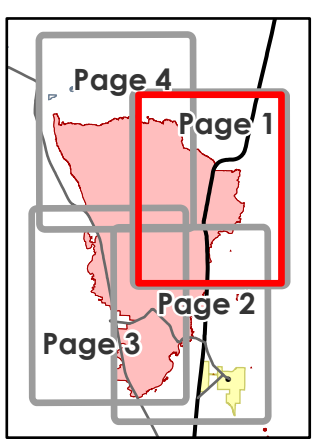
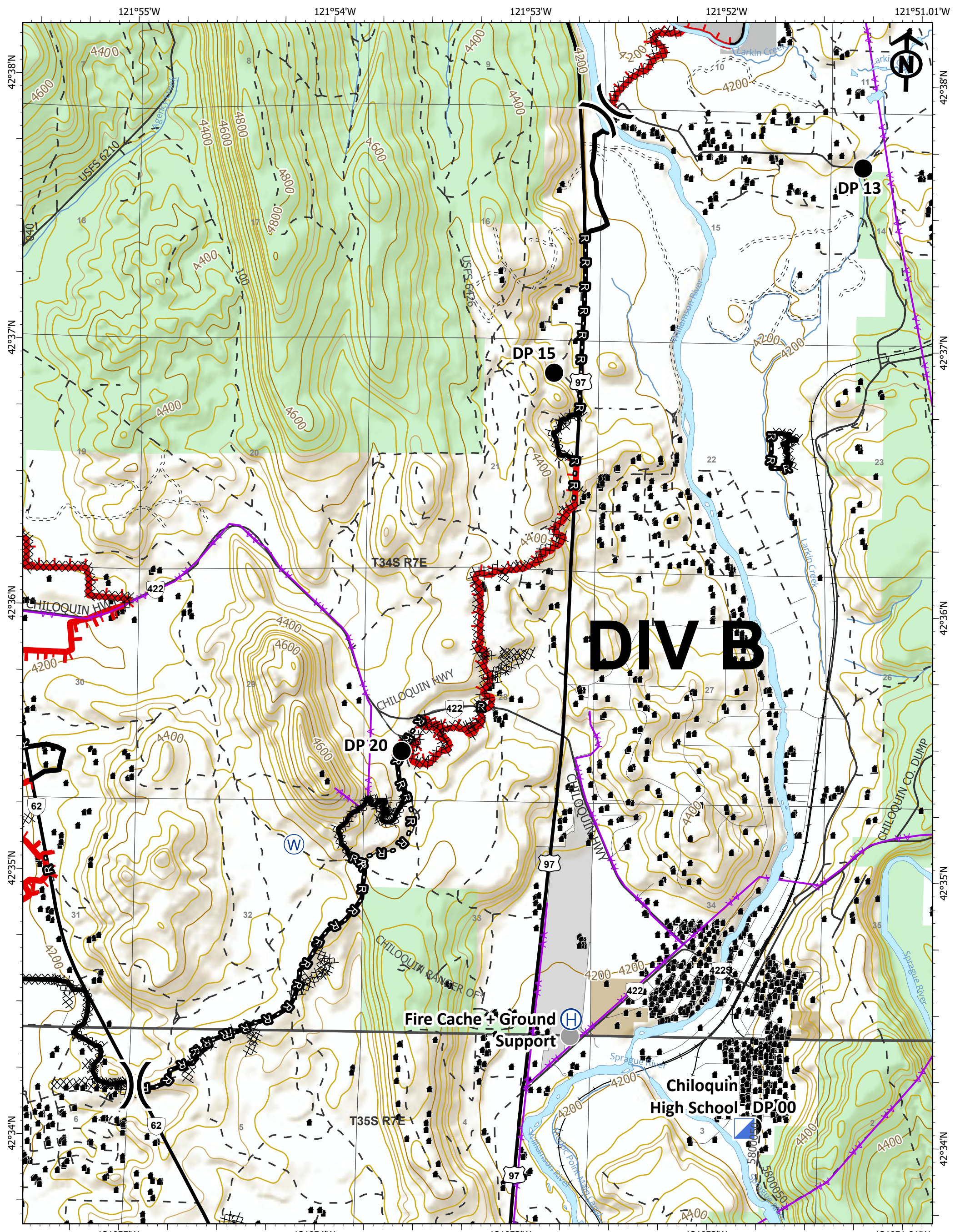


IAP
 Two Four Two
 OR981S07621
 09/20/2020
 Page 1 of 4
 14,473 acres



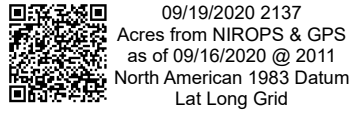
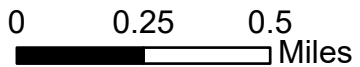
- Drop Point
- Helispot
- Staging Area
- Water Source
- Division Break
- Structure
- Uncontrolled Fire Edge
- Contained Line
- Completed Dozer Line
- Completed Hand Line
- Road as Completed Line
- Aerial Hazard
- Fence
- Railroads
- Oregon Parks and Recreation Dept
- U.S. Forest Service



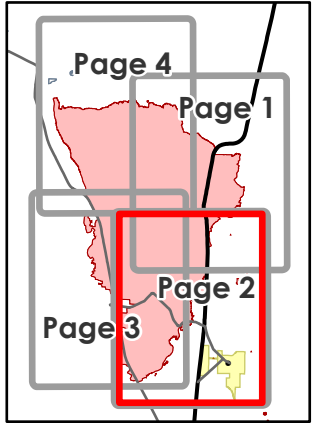


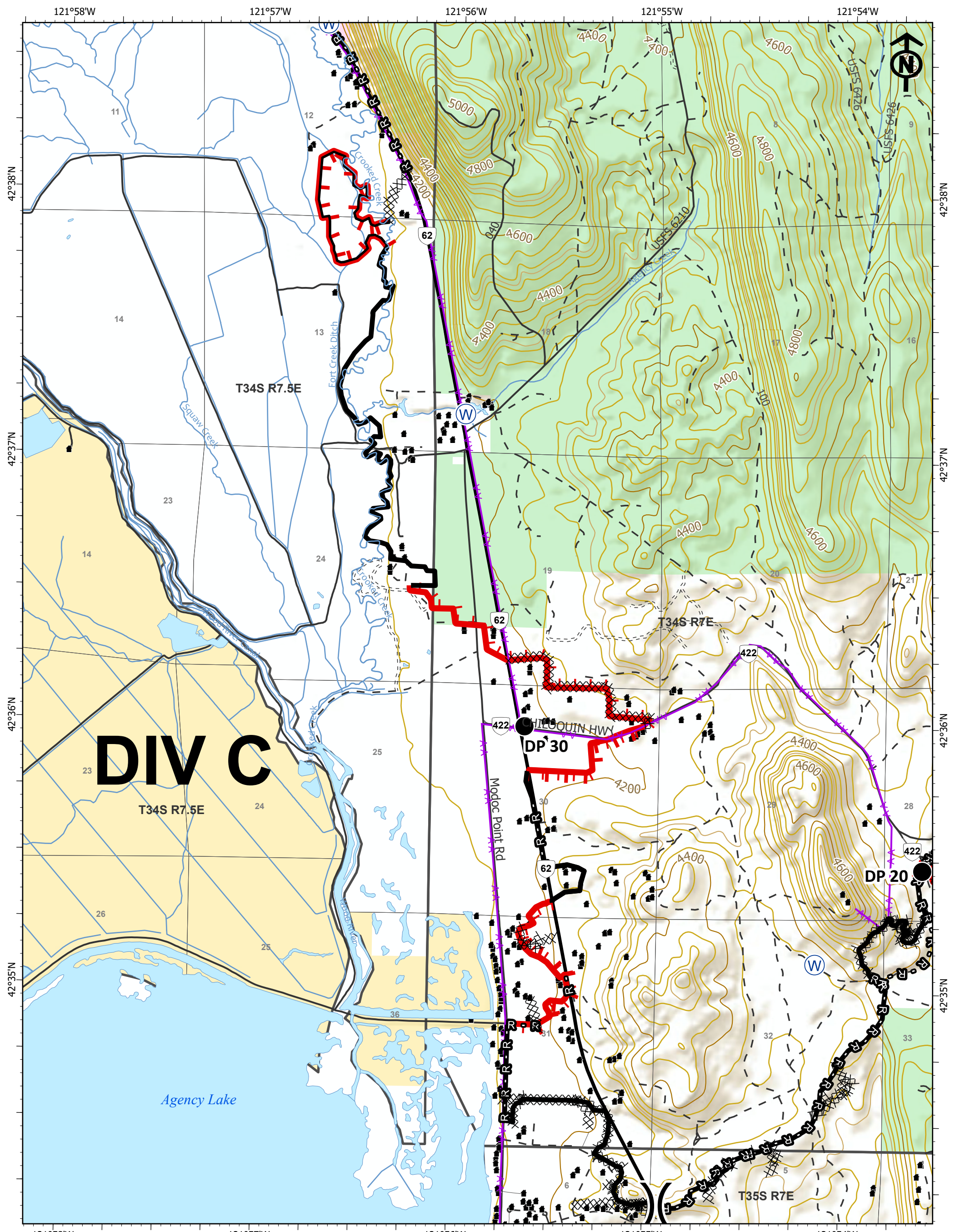
IAP

Two Four Two
 OR981S07621
 09/20/2020
 Page 2 of 4
 14,473 acres



- Drop Point
- Helibase
- Incident Command Post
- Water Source
- Fire Cache + Ground Support
- Division Break
- Structure
- Uncontrolled Fire Edge
- Contained Line
- Cold Trail
- Completed Dozer Line
- Completed Hand Line
- Road as Completed Line
- Aerial Hazard
- Railroads
- Oregon Other State Lands
- Oregon Parks and Recreation Dept
- U.S. Bureau of Indian Affairs & Tribal Trust
- U.S. Forest Service





DIV C

T34S R7.5E

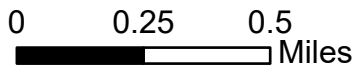
IAP

Two Four Two
OR981S07621

09/20/2020

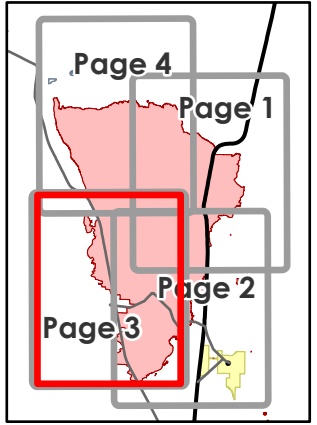
Page 3 of 4

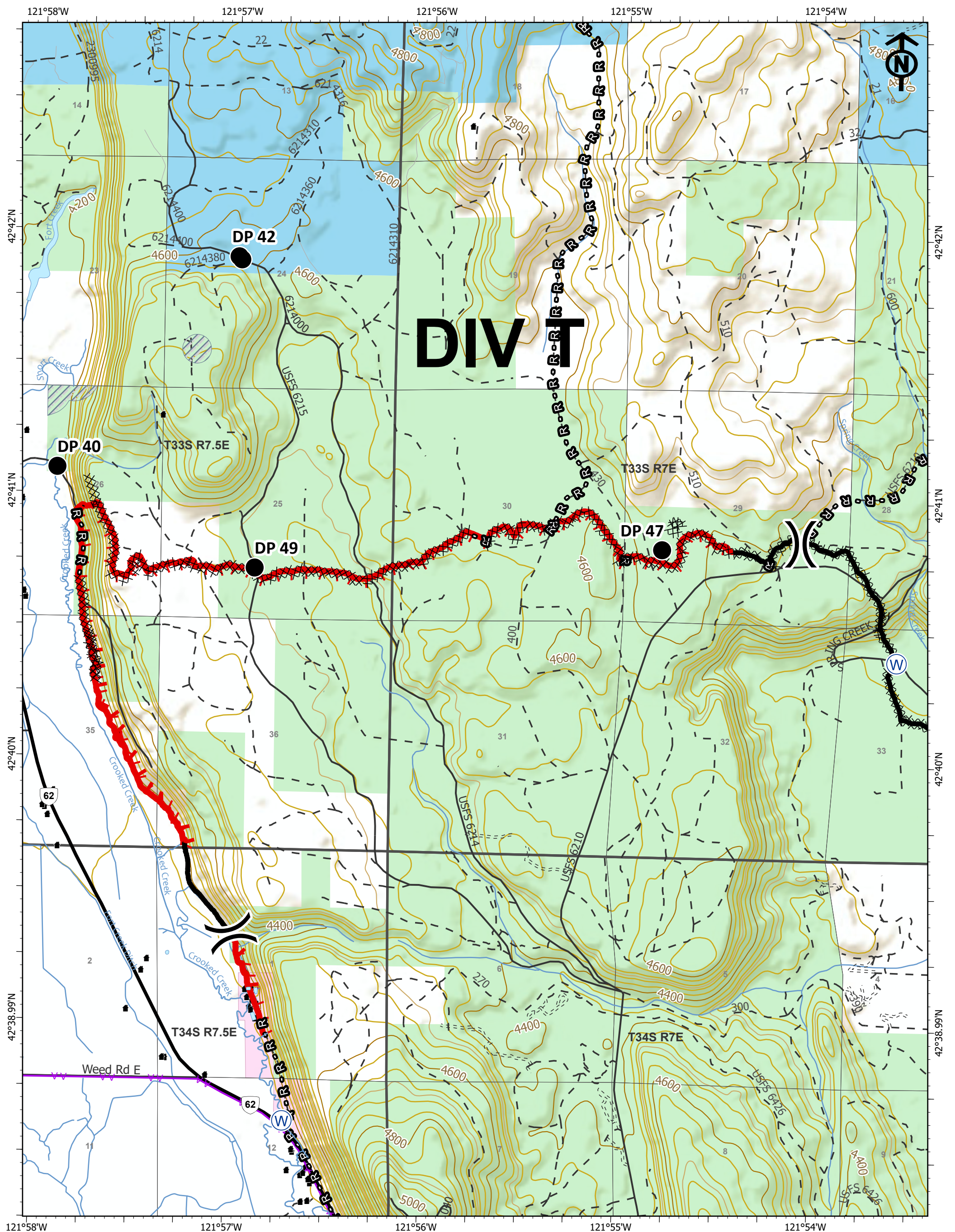
14,473 acres



09/19/2020 2138
Acres from NIROPS & GPS
as of 09/16/2020 @ 2011
North American 1983 Datum
Lat Long Grid

- Drop Point
- Ⓜ Water Source
-) Division Break
- Structure
- ▬ Uncontrolled Fire Edge
- ▬ Contained Line
- ▬ Cold Trail
- XXXXX Completed Dozer Line
- H · H Completed Hand Line
- R · R Road as Completed Line
- ▲▲ Aerial Hazard
- Oregon Dept of Fish and Wildlife
- U.S. Bureau of Land Management
- U.S. Forest Service

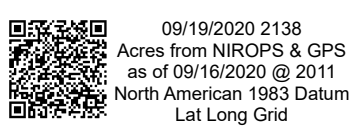
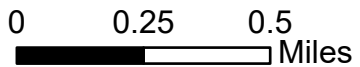




DIV

IAP

Two Four Two
 OR981S07621
 09/20/2020
 Page 4 of 4
 14,473 acres



- Drop Point
- Ⓜ Water Source
- ⌋ Division Break
- Structure
- ▬ Uncontrolled Fire Edge
- ▬ Contained Line
- ▬ Cold Trail
- XXXXX Completed Dozer Line
- H · H Completed Hand Line
- R · R Road as Completed Line
- ▲▲ Aerial Hazard
- ▨ Retardant Avoidance Area
- ▬ Oregon Dept of Forestry (ODF)
- ▬ Oregon Dept of Fish and Wildlife
- ▬ U.S. Forest Service

