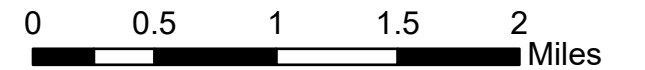
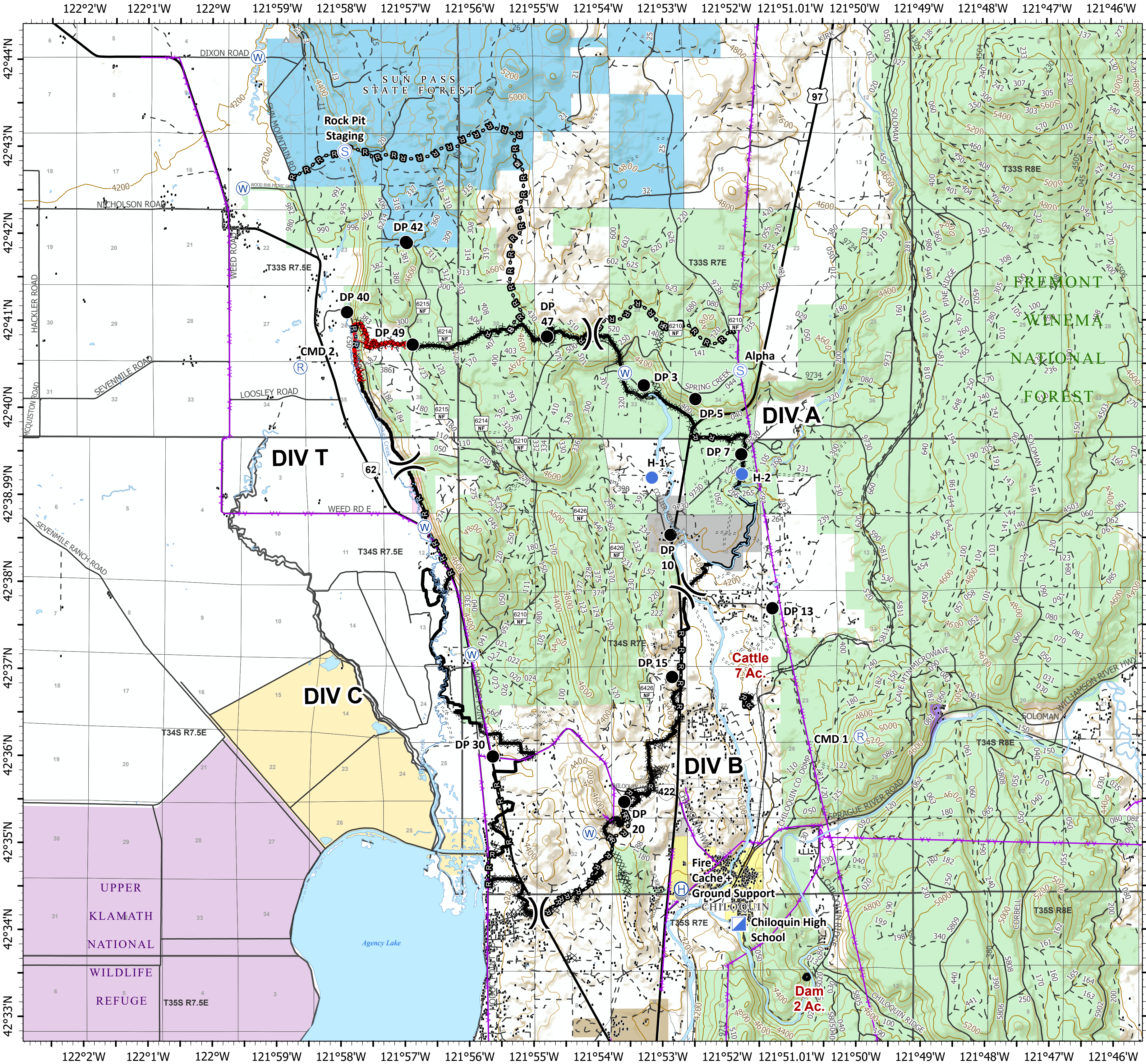


Transition

Two Four Two
OR981S07621
14,473 acres



- Drop Point
- ⊕ Helibase
- Helispot
- ▣ Incident Command Post
- Ⓡ Repeater
- Ⓢ Staging Area
- Ⓦ Water Source
- Fire Cache + Ground Support
-) Division Break
- ▲ Campground
- Structure
- Railroads
- ▬ Uncontrolled Fire Edge
- ▬ Contained Line
- XXXXX Completed Dozer Line
- H - H Completed Hand Line
- R - R Road as Completed Line
- ⚡ Aerial Hazard
- - - Fence
- ▭ Wildfire Daily Fire Perimeter
- ▭ Waterbody
- ▭ Oregon Department of Forestry (ODF)
- ▭ Oregon Department of Fish and Wildlife
- ▭ Oregon Other State Lands
- ▭ Oregon Parks and Recreation Department
- ▭ Tribal Fee Lands
- ▭ U.S. Fish and Wildlife Service
- ▭ U.S. Bureau of Land Management
- ▭ U.S. Bureau of Indian Affairs and Tribal Trust
- ▭ United States Forest Service
- ▭ City Limit
- ~ Stream



ODF IMT 2 GIS
 09/22/2020 1855
 Acres from NIROPS & GPS
 as of 09/16/2020 @ 2011
 North American 1983 Datum
 Lat Long Grid