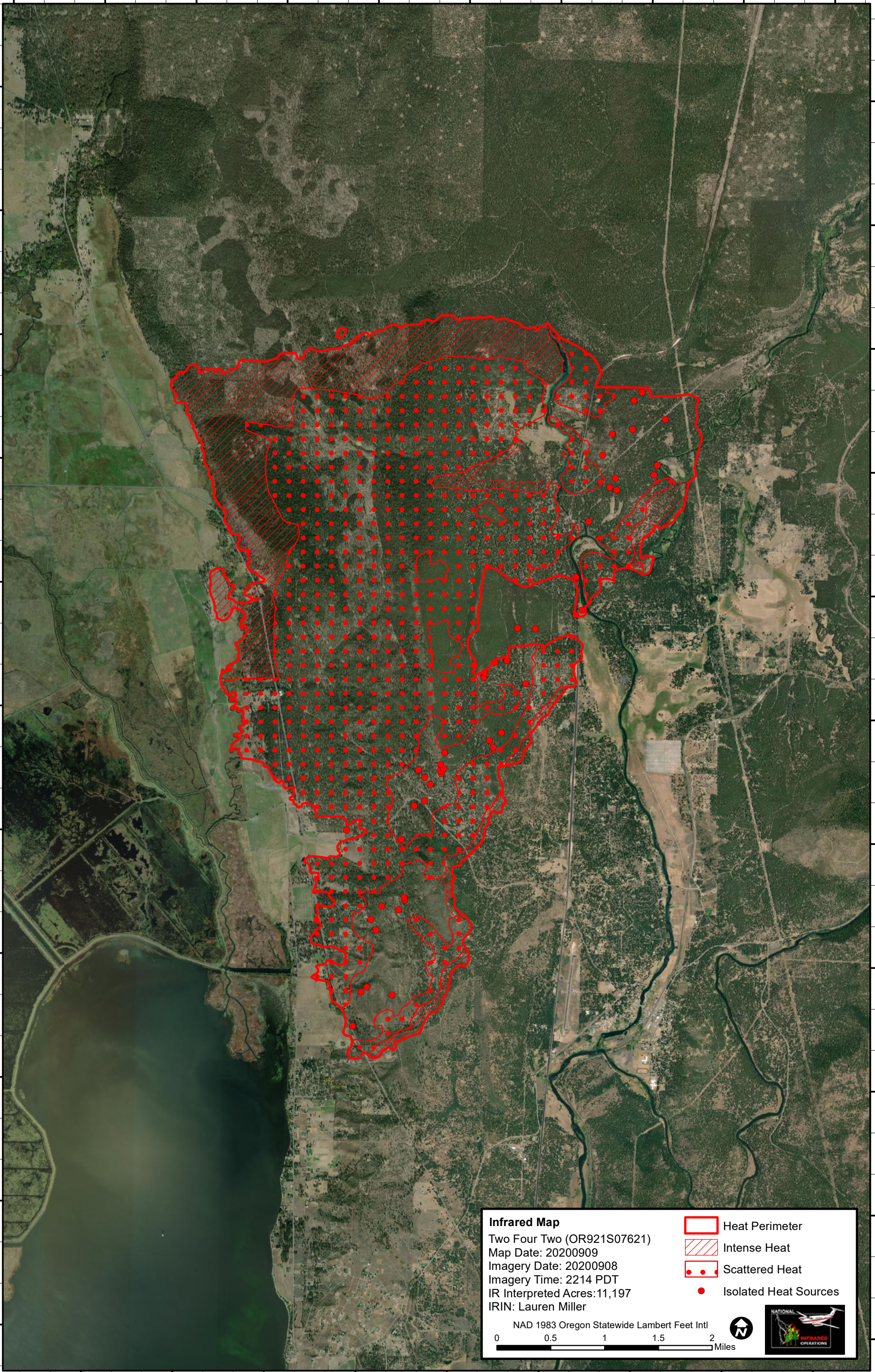






121°59'0"W 121°58'0"W 121°57'0"W 121°56'0"W 121°55'0"W 121°54'0"W 121°53'0"W 121°52'0"W 121°51'0"W 121°50'0"W

42°42'0"N
42°41'0"N
42°40'0"N
42°39'0"N
42°38'0"N
42°37'0"N
42°36'0"N
42°35'0"N
42°34'0"N
42°33'0"N
42°32'0"N



42°42'0"N
42°41'0"N
42°40'0"N
42°39'0"N
42°38'0"N
42°37'0"N
42°36'0"N
42°35'0"N
42°34'0"N
42°33'0"N
42°32'0"N



Infrared Map
 Two Four Two (OR921S07621)
 Map Date: 20200909
 Imagery Date: 20200908
 Imagery Time: 2214 PDT
 IR Interpreted Acres: 11,197
 IRIN: Lauren Miller

-  Heat Perimeter
-  Intense Heat
-  Scattered Heat
-  Isolated Heat Sources

NAD 1983 Oregon Statewide Lambert Feet Intl
 0 0.5 1 1.5 2 Miles

121°58'0"W 121°57'0"W 121°56'0"W 121°55'0"W 121°54'0"W 121°53'0"W 121°52'0"W 121°51'0"W 121°50'0"W