

123°20'W

123°10'W

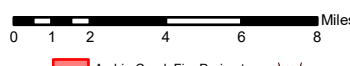
123°0'W

122°50'W

122°40'W

122°30'W

Archie Creek Fire OR-UPF-000436 Dutch Creek Map 9/15/2020 122,156 acres



- DriveTime**
- <40 Minutes
 - <60 Minutes
 - >60 Minutes
- Legend:**
- Archie Creek Fire Perimeter
 - Airstrip or Airport
 - Camp
 - Closure
 - Drop Point
 - Helibase
 - Helispot
 - Mobile Weather Unit
 - Retardant/Mud Pit
 - Staging Area
 - Division Break
 - Branch Break

| Location | Latitude | Longitude | Drive Time |
|---------------------------|-------------|---------------|------------|
| DP 29 | 43° 28.877' | -123° 1.913' | 35 |
| DP 28 | 43° 28.336' | -123° 3.529' | 35 |
| DP 30 | 43° 27.665' | -122° 56.138' | 45 |
| DP 32 | 43° 30.468' | -122° 50.665' | 70 |
| DP 33 | 43° 27.502' | -122° 56.138' | 90 |
| DP 40 | 43° 20.753' | -122° 44.153' | 60 |
| DP 41 | 43° 21.015' | -122° 43.750' | 60 |
| DP 42 | 43° 22.833' | -122° 45.655' | 65 |
| DP 45 | 43° 16.423' | -122° 16.423' | 75 |
| DP-48 | 43° 23.335' | -122° 45.907' | 65 |
| DP-49 | 43° 23.515' | -122° 46.605' | 65 |
| DP-50 | 43° 32.427' | -122° 47.058' | 60 |
| DP 80 | 43° 15.672' | -123° 1.865' | 35 |
| DP 81 | 43° 16.167' | -123° 59.267' | 50 |
| DP 82 | 43° 16.373' | -123° 58.163' | 50 |
| DP 90 | 43° 16.380' | -123° 4.962' | 30 |
| H 1 | 43° 21.281' | -122° 43.735' | 60 |
| H 2 | 43° 13.683' | -122° 25.606' | 115 |
| Eagle Rock Camp | 43° 17.750' | -123° 33.272' | 90 |
| Canton Camp | 43° 26.259' | -123° 5.511' | 80 |
| Gassy Creek Camp | 43° 25.020' | -123° 7.200' | 25 |
| Wolf Creek Job Corps Camp | 43° 14.306' | -122° 56.630' | 45 |
| Toketee Airstrip | 43° 13.624' | -122° 25.506' | 115 |
| Hinkle Staging | 43° 18.363' | -123° 5.048' | 35 |
| Mill Staging | 43° 26.018' | -123° 46.582' | 25 |

44°0'N

43°50'N

43°40'N

43°30'N

43°20'N

43°10'N

43°0'N

44°0'N

43°50'N

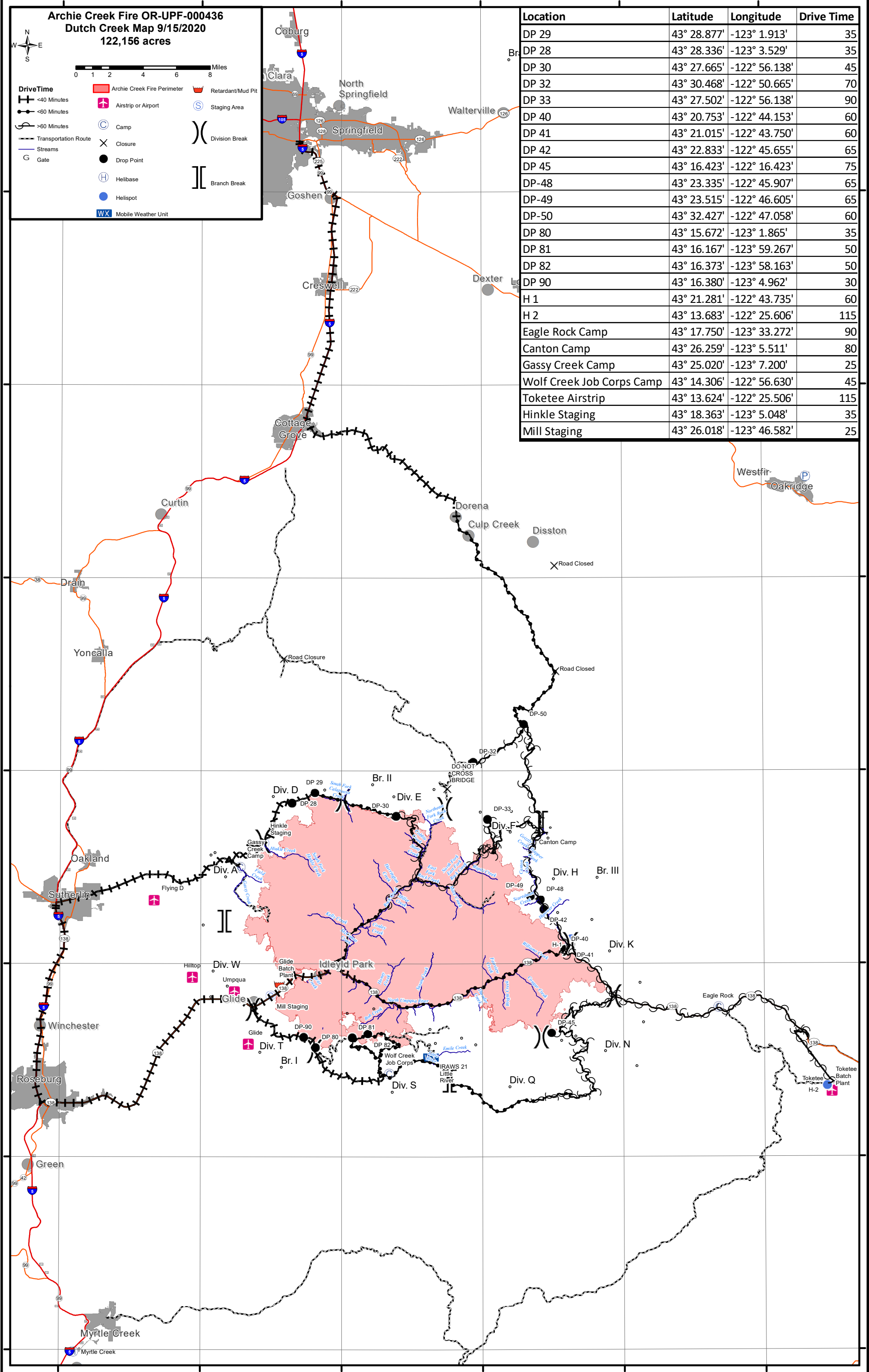
43°40'N

43°30'N

43°20'N

43°10'N

43°0'N



123°20'W

123°10'W

123°0'W

122°50'W

122°40'W

122°30'W