

123°20'W 123°10'W 123°0'W 122°50'W 122°40'W 122°30'W

44°10'N
44°0'N
43°50'N
43°40'N
43°30'N
43°20'N
43°10'N
43°0'N

44°10'N
44°0'N
43°50'N
43°40'N
43°30'N
43°20'N
43°10'N
43°0'N

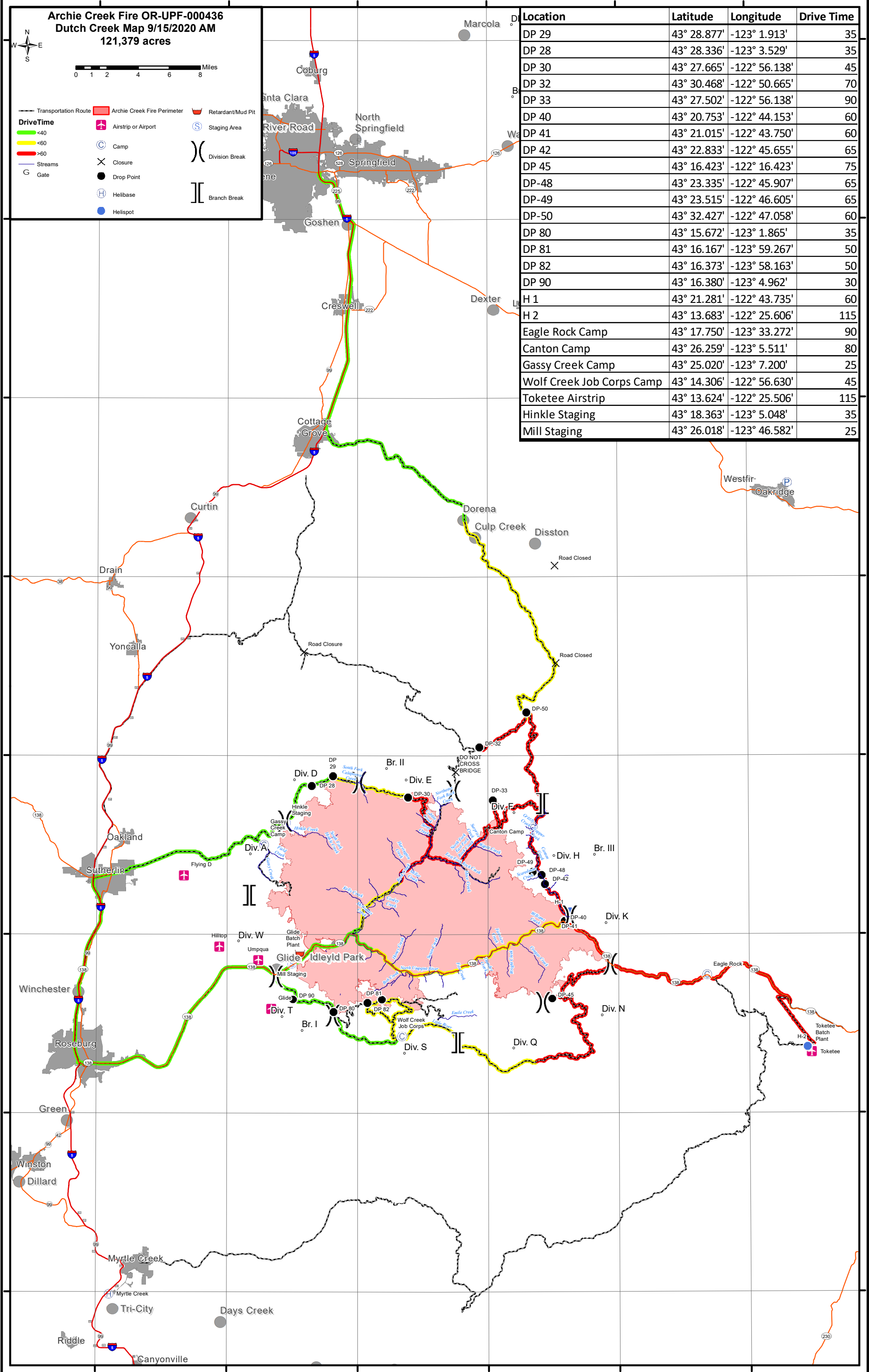
Archie Creek Fire OR-UPF-000436
Dutch Creek Map 9/15/2020 AM
121,379 acres

Scale: 0 1 2 4 6 8 Miles

— Transportation Route
 — Archie Creek Fire Perimeter
 — Retardant/Mud Pit
 — Airstrip or Airport
 — Camp
 — Closure
 — Drop Point
 — Helibase
 — Helispot
 — Staging Area
 — Division Break
 — Branch Break
 — Streams
 — Gate

DriveTime
 <40
 <60
 >60

Location	Latitude	Longitude	Drive Time
DP 29	43° 28.877'	-123° 1.913'	35
DP 28	43° 28.336'	-123° 3.529'	35
DP 30	43° 27.665'	-122° 56.138'	45
DP 32	43° 30.468'	-122° 50.665'	70
DP 33	43° 27.502'	-122° 56.138'	90
DP 40	43° 20.753'	-122° 44.153'	60
DP 41	43° 21.015'	-122° 43.750'	60
DP 42	43° 22.833'	-122° 45.655'	65
DP 45	43° 16.423'	-122° 16.423'	75
DP-48	43° 23.335'	-122° 45.907'	65
DP-49	43° 23.515'	-122° 46.605'	65
DP-50	43° 32.427'	-122° 47.058'	60
DP 80	43° 15.672'	-123° 1.865'	35
DP 81	43° 16.167'	-123° 59.267'	50
DP 82	43° 16.373'	-123° 58.163'	50
DP 90	43° 16.380'	-123° 4.962'	30
H 1	43° 21.281'	-122° 43.735'	60
H 2	43° 13.683'	-122° 25.606'	115
Eagle Rock Camp	43° 17.750'	-123° 33.272'	90
Canton Camp	43° 26.259'	-123° 5.511'	80
Gassy Creek Camp	43° 25.020'	-123° 7.200'	25
Wolf Creek Job Corps Camp	43° 14.306'	-122° 56.630'	45
Toketee Airstrip	43° 13.624'	-122° 25.506'	115
Hinkle Staging	43° 18.363'	-123° 5.048'	35
Mill Staging	43° 26.018'	-123° 46.582'	25



123°20'W 123°10'W 123°0'W 122°50'W 122°40'W 122°30'W