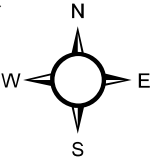
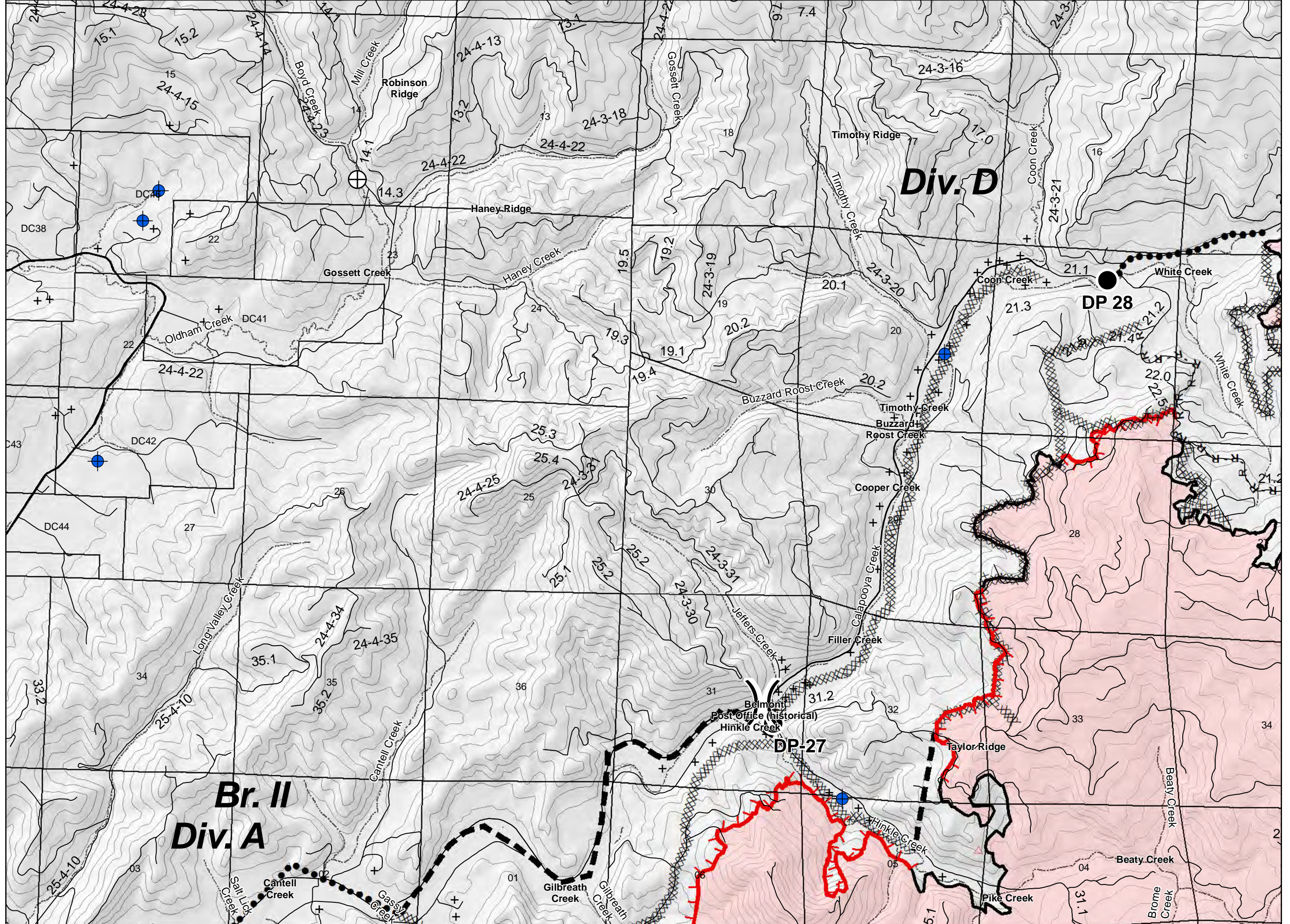
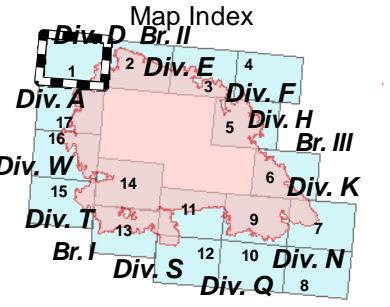


IAP Map
Archie Creek Fire
OR-UPF-000436
9/17/2020 0600-2000 hrs
128,020 Acres
Map Page: 1

- Legend**
- Residence
 - Contour_100ft
 - Roads
 - Streams
 - Airstrip or Airport
 - Camp
 - Closure
 - Dip Site
 - Drop Point
 - Fire Origin
 - Helispot
 - Mobile Weather Unit
 - Repeater
 - Safety Zone
 - Spot Fire
 - Staging Area
 - Water Development or Draft Site
 - Value at Risk
 - Division Break
 - Branch Break
 - Uncontrolled Fire Edge
 - Contained Line
 - Completed Dozer Line
 - Completed Hand Line
 - Road as Completed Line
 - Completed Burnout
 - Planned Fire Line
 - Planned Secondary Line
 - Management Action Point
 - Wildfire Daily Fire Perimeter

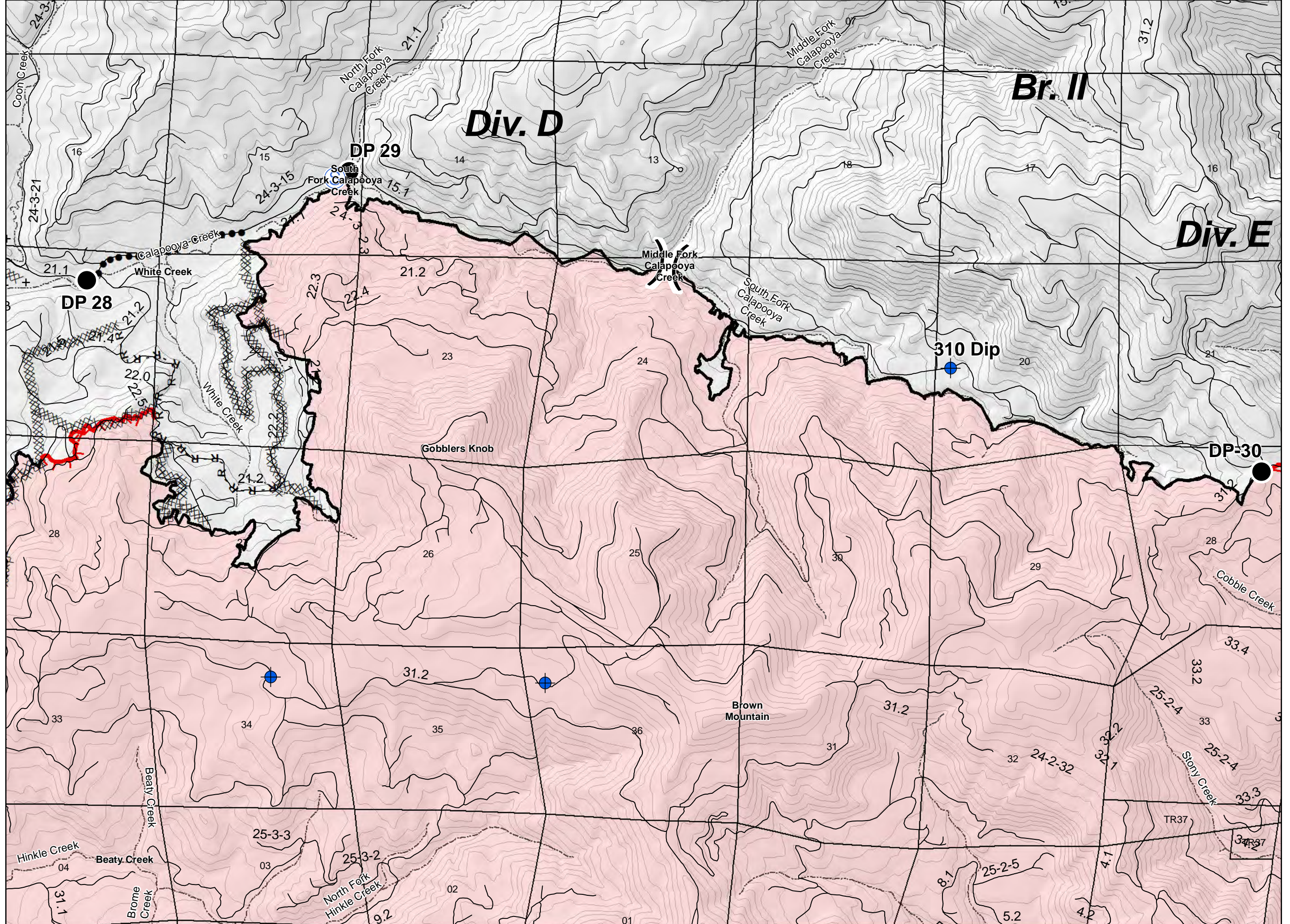
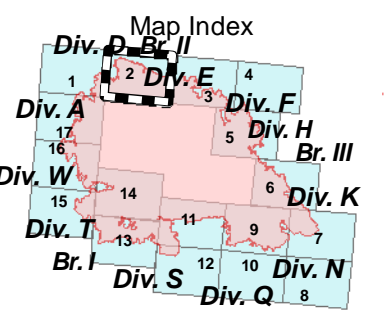
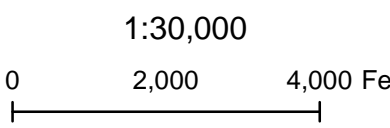
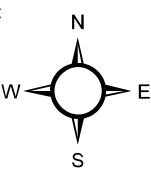


1:30,000
 0 2,000 4,000 Feet

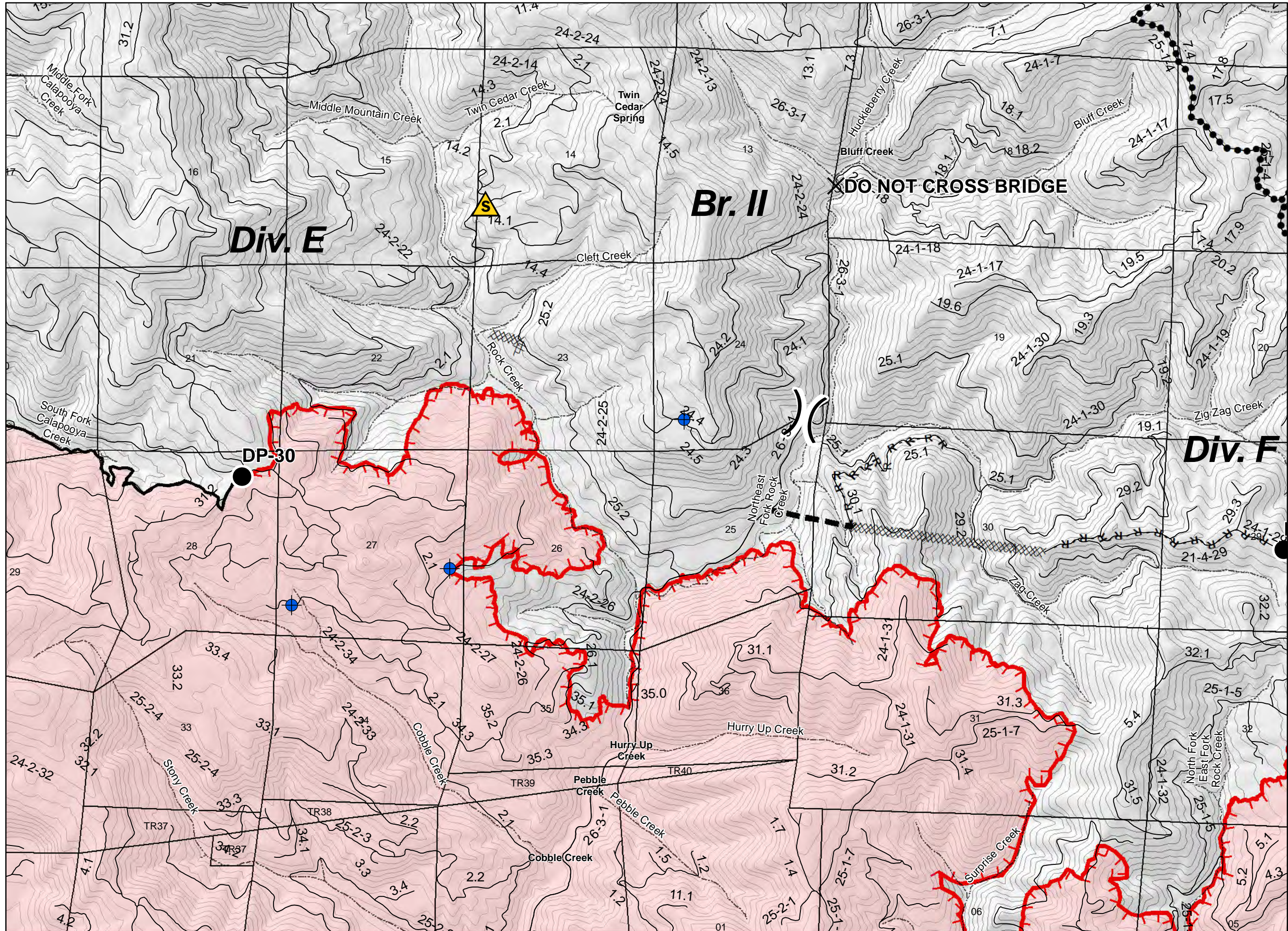
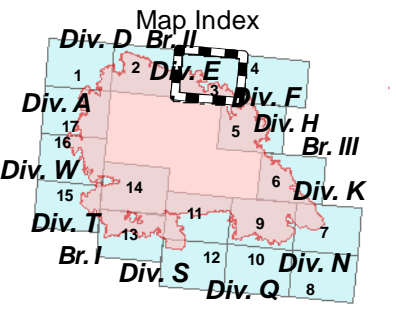
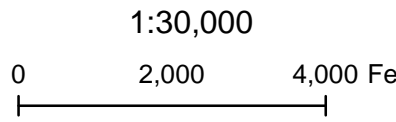
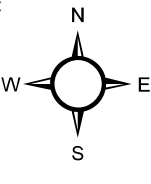


IAP Map
Archie Creek Fire
OR-UPF-000436
9/17/2020 0600-2000 hrs
128,020 Acres
Map Page: 2

- Legend**
- + Residence
 - Contour_100ft
 - Roads
 - - - Streams
 - ✈ Airstrip or Airport
 - ⊙ Camp
 - ✕ Closure
 - ⊕ Dip Site
 - Drop Point
 - ⊗ Fire Origin
 - ⊙ Helispot
 - WX Mobile Weather Unit
 - Ⓡ Repeater
 - ⚠ Safety Zone
 - ⊙ Spot Fire
 - Ⓢ Staging Area
 - ⊕ Water Development or Draft Site
 - ⚑ Value at Risk
 -) (Division Break
 - || Branch Break
 - ▬ Uncontrolled Fire Edge
 - ▬ Contained Line
 - ▬ Completed Dozer Line
 - H - Completed Hand Line
 - R - Road as Completed Line
 - ⊙ Completed Burnout
 - ▬ Planned Fire Line
 - Planned Secondary Line
 - ➡ Management Action Point
 - ▭ Wildfire Daily Fire Perimeter

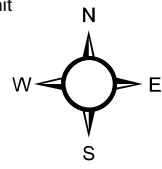


- Legend**
- + Residence
 - Contour_100ft
 - Roads
 - - - Streams
 - ✈ Airstrip or Airport
 - ⊙ Camp
 - ✕ Closure
 - ⊕ Dip Site
 - Drop Point
 - ⊗ Fire Origin
 - Helispot
 - WX Mobile Weather Unit
 - Ⓡ Repeater
 - ⚠ Safety Zone
 - ⊙ Spot Fire
 - Ⓢ Staging Area
 - ⊕ Water Development or Draft Site
 - ▬ Value at Risk
 -) (Division Break
 - || Branch Break
 - ▬ Uncontrolled Fire Edge
 - ▬ Contained Line
 - ▬ Completed Dozer Line
 - H - Completed Hand Line
 - R - Road as Completed Line
 - Ⓢ Completed Burnout
 - ▬ Planned Fire Line
 - Planned Secondary Line
 - 👉 Management Action Point
 - ▬ Wildfire Daily Fire Perimeter

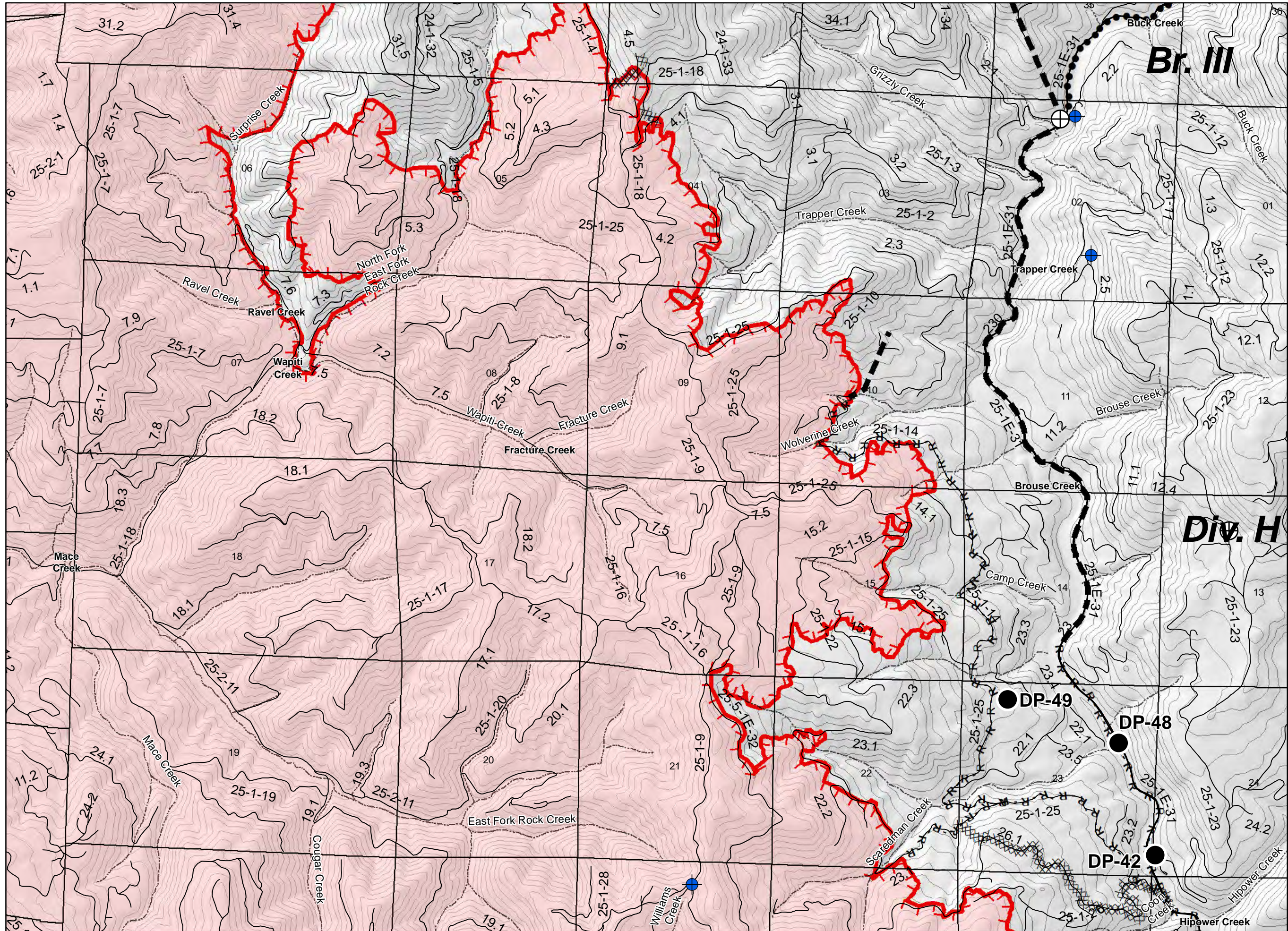
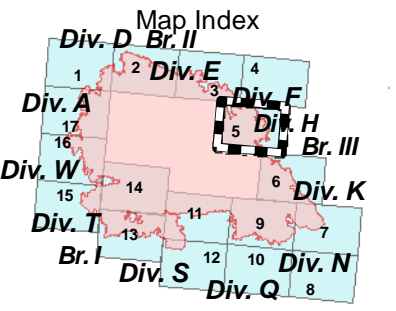


IAP Map
Archie Creek Fire
OR-UPF-000436
9/17/2020 0600-2000 hrs
128,020 Acres
Map Page: 5

- Legend**
- + Residence
 - Contour_100ft
 - Roads
 - - - Streams
 - ✈ Airstrip or Airport
 - ⊙ Camp
 - ✕ Closure
 - ⊕ Dip Site
 - Drop Point
 - ⊗ Fire Origin
 - Helispot
 - WX Mobile Weather Unit
 - Ⓡ Repeater
 - ⚠ Safety Zone
 - ⊙ Spot Fire
 - Ⓢ Staging Area
 - ⊕ Water Development or Draft Site
 - ⚠ Value at Risk
 -) (Division Break
 - || Branch Break
 - ▬ Uncontrolled Fire Edge
 - ▬ Contained Line
 - ▬ Completed Dozer Line
 - H - Completed Hand Line
 - R - Road as Completed Line
 - ⊕ Completed Burnout
 - ▬ Planned Fire Line
 - Planned Secondary Line
 - ➡ Management Action Point
 - ▬ Wildfire Daily Fire Perimeter

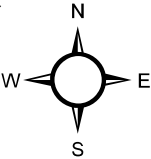


1:30,000
 0 2,000 4,000 Feet

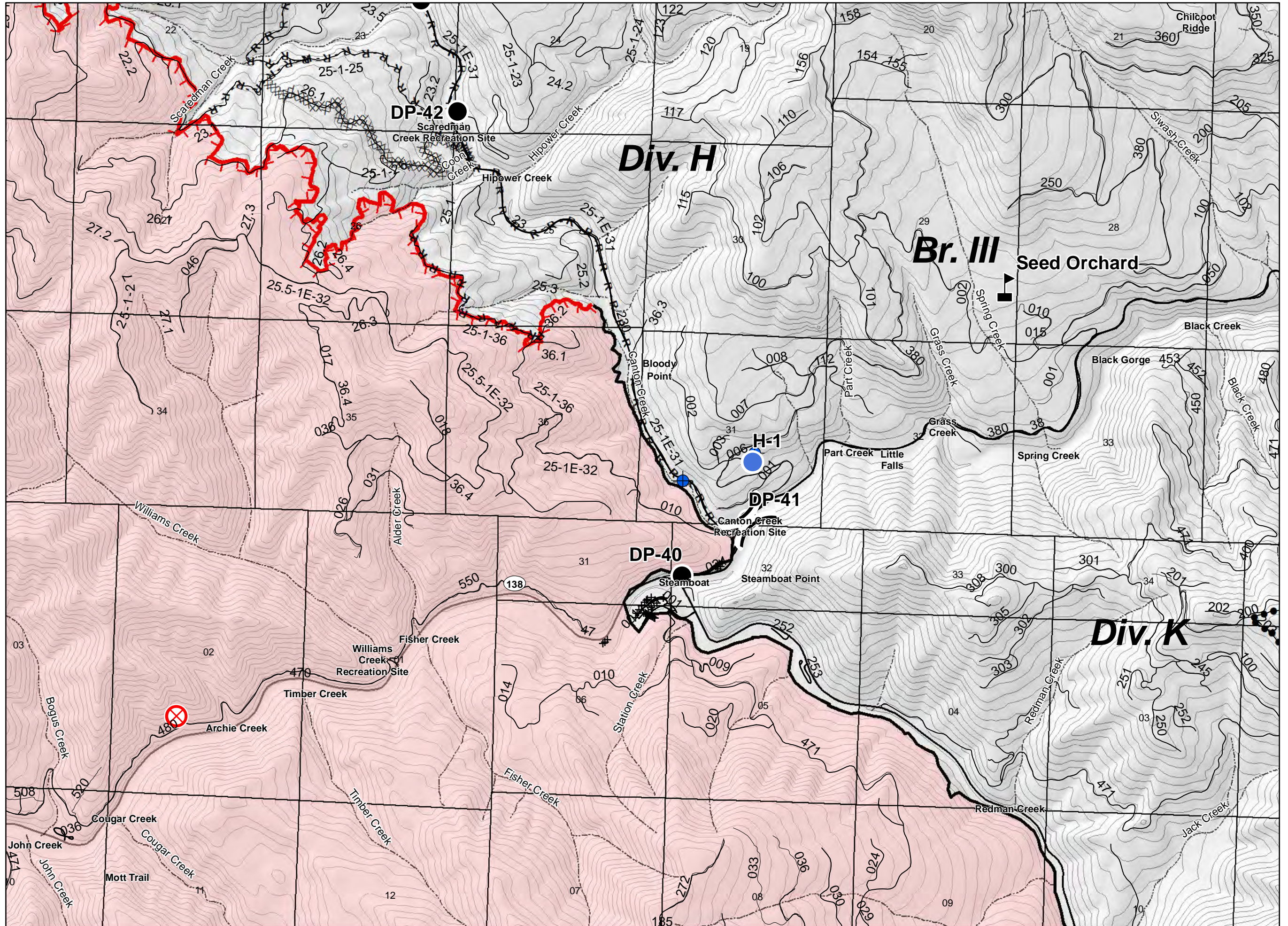
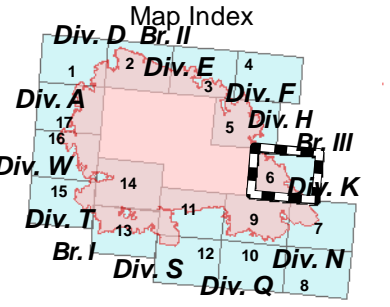


IAP Map
Archie Creek Fire
OR-UPF-000436
9/17/2020 0600-2000 hrs
128,020 Acres
Map Page: 6

- Legend**
- + Residence
 - Contour_100ft
 - Roads
 - - - Streams
 - ✈ Airstrip or Airport
 - ⊙ Camp
 - ✕ Closure
 - ⊕ Dip Site
 - Drop Point
 - ⊗ Fire Origin
 - Helispot
 - WX Mobile Weather Unit
 - Ⓡ Repeater
 - ⚠ Safety Zone
 - ⊙ Spot Fire
 - Ⓢ Staging Area
 - ⊕ Water Development or Draft Site
 - ⚠ Value at Risk
 -) (Division Break
 - || Branch Break
 - ▬ Uncontrolled Fire Edge
 - ▬ Contained Line
 - ⊗ Completed Dozer Line
 - H - Completed Hand Line
 - R - Road as Completed Line
 - ⊕ Completed Burnout
 - ▬ Planned Fire Line
 - Planned Secondary Line
 - ➡ Management Action Point
 - ▬ Wildfire Daily Fire Perimeter

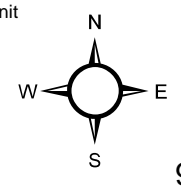


1:30,000
 0 2,000 4,000 Feet

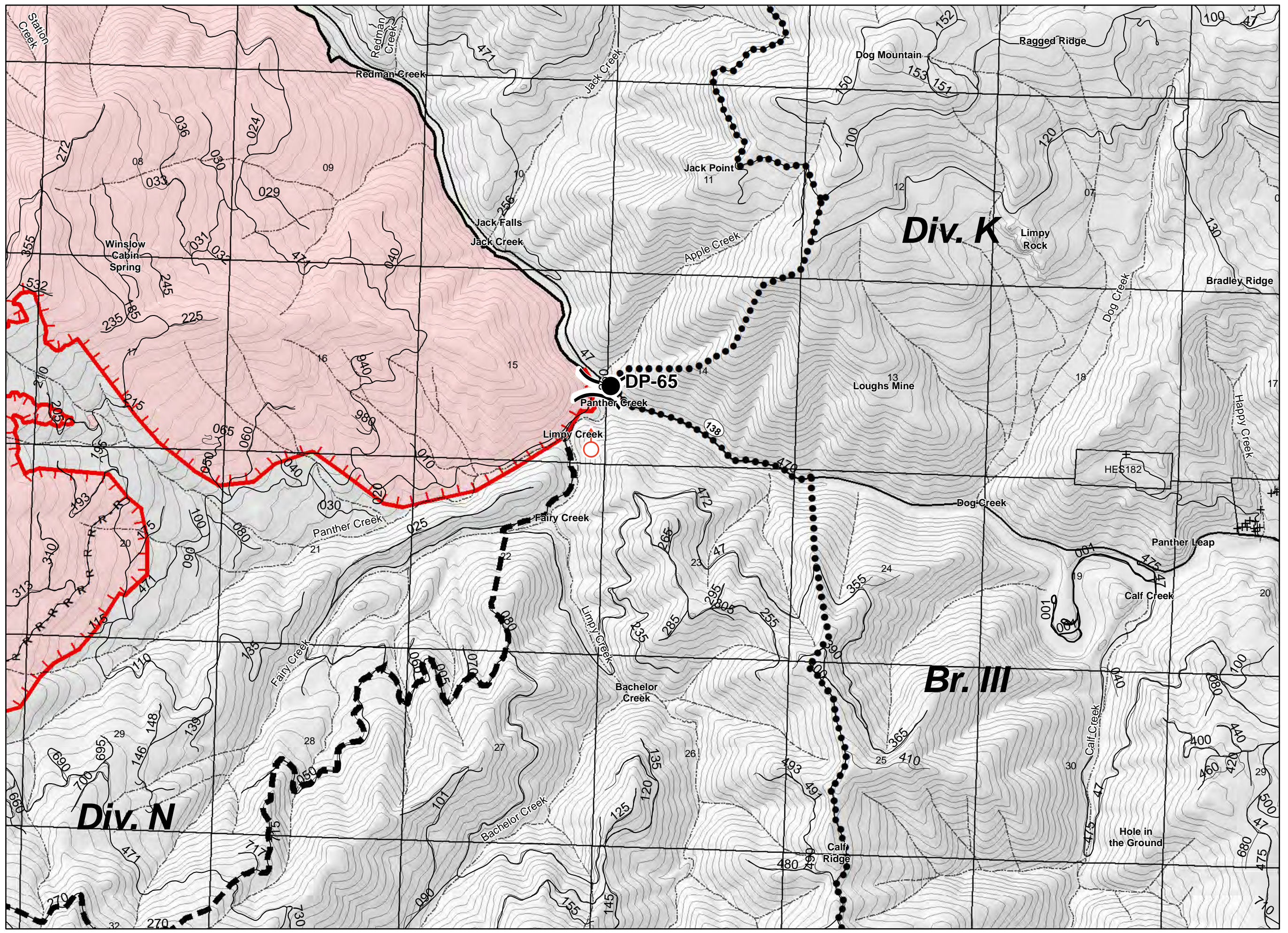
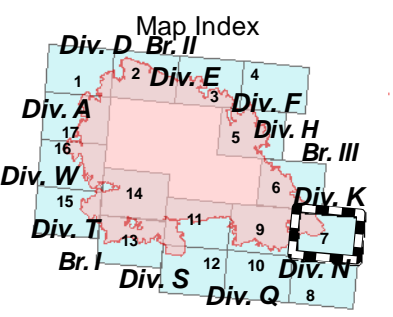


IAP Map
Archie Creek Fire
OR-UPF-000436
9/17/2020 0600-2000 hrs
128,020 Acres
Map Page: 7

- Legend**
- + Residence
 - Contour_100ft
 - Roads
 - - - Streams
 - ✈ Airstrip or Airport
 - ⊙ Camp
 - ✕ Closure
 - ⊕ Dip Site
 - Drop Point
 - ⊗ Fire Origin
 - Helispot
 - WX Mobile Weather Unit
 - Ⓡ Repeater
 - ⚠ Safety Zone
 - ⊙ Spot Fire
 - Ⓢ Staging Area
 - ⊕ Water Development or Draft Site
 - ⚠ Value at Risk
 -) (Division Break
 - || Branch Break
 - ▬ Uncontrolled Fire Edge
 - ▬ Contained Line
 - ⊗ Completed Dozer Line
 - H - Completed Hand Line
 - R - Road as Completed Line
 - ⊙ Completed Burnout
 - ▬ Planned Fire Line
 - Planned Secondary Line
 - ➡ Management Action Point
 - ▭ Wildfire Daily Fire Perimeter

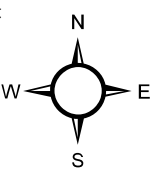


1:30,000
 0 2,000 4,000 Feet

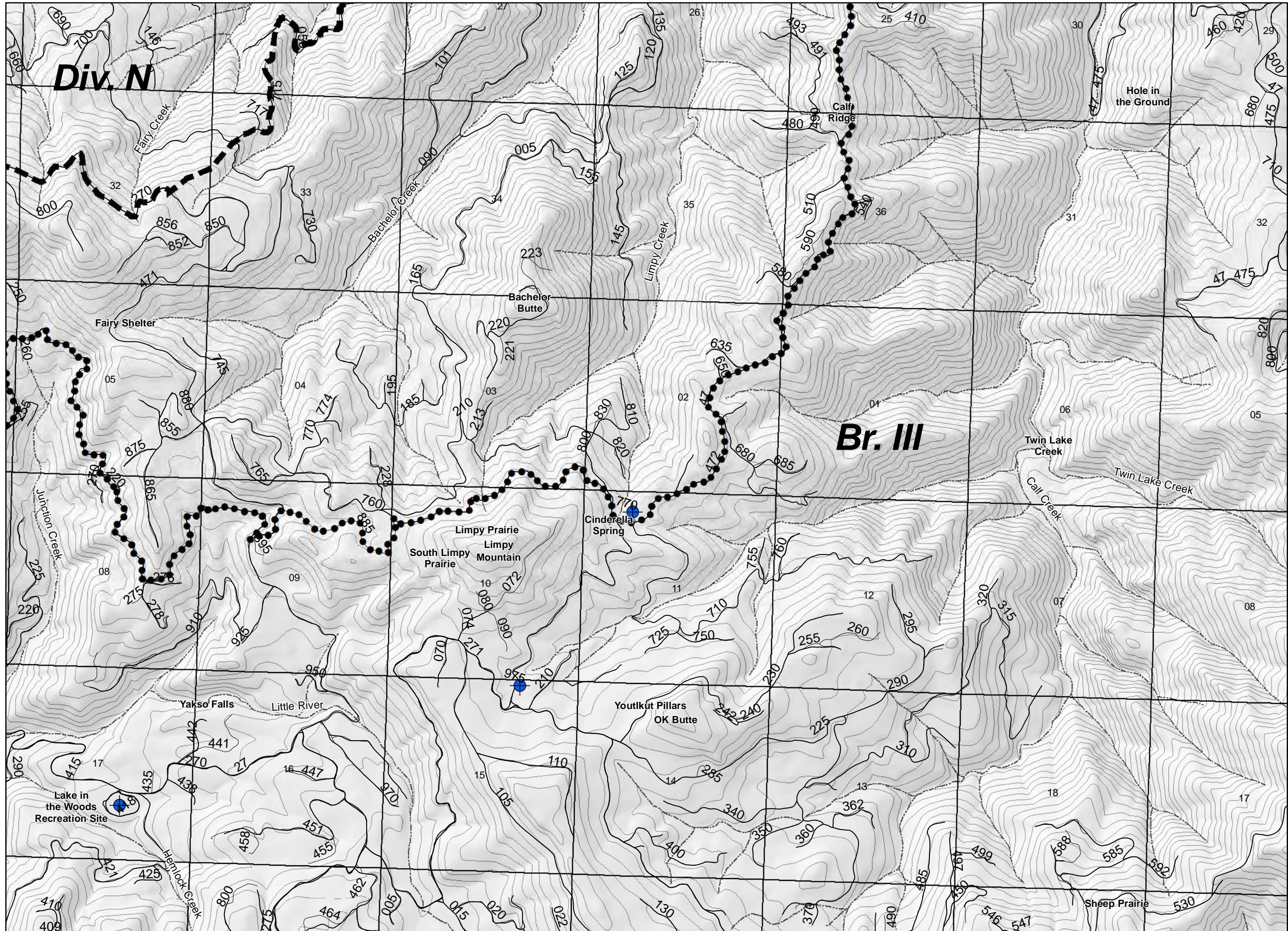
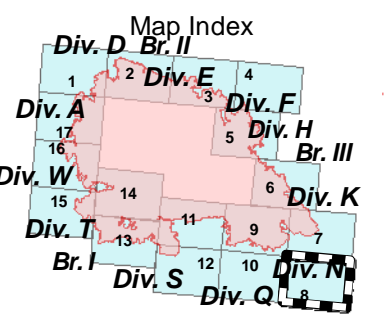


IAP Map
Archie Creek Fire
OR-UPF-000436
9/17/2020 0600-2000 hrs
128,020 Acres
Map Page: 8

- Legend**
- + Residence
 - Contour_100ft
 - Roads
 - - - Streams
 - ✈ Airstrip or Airport
 - ⊙ Camp
 - ✕ Closure
 - ⊕ Dip Site
 - Drop Point
 - ⊗ Fire Origin
 - Helispot
 - WX Mobile Weather Unit
 - Ⓡ Repeater
 - ⚠ Safety Zone
 - ⊙ Spot Fire
 - Ⓢ Staging Area
 - ⊕ Water Development or Draft Site
 - ⚠ Value at Risk
 -) (Division Break
 - || Branch Break
 - ▬ Uncontrolled Fire Edge
 - ▬ Contained Line
 - ⊗ Completed Dozer Line
 - H - Completed Hand Line
 - R - Road as Completed Line
 - ⊕ Completed Burnout
 - ▬ Planned Fire Line
 - Planned Secondary Line
 - ➡ Management Action Point
 - ▭ Wildfire Daily Fire Perimeter

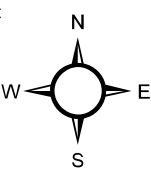


1:30,000
 0 2,000 4,000 Feet

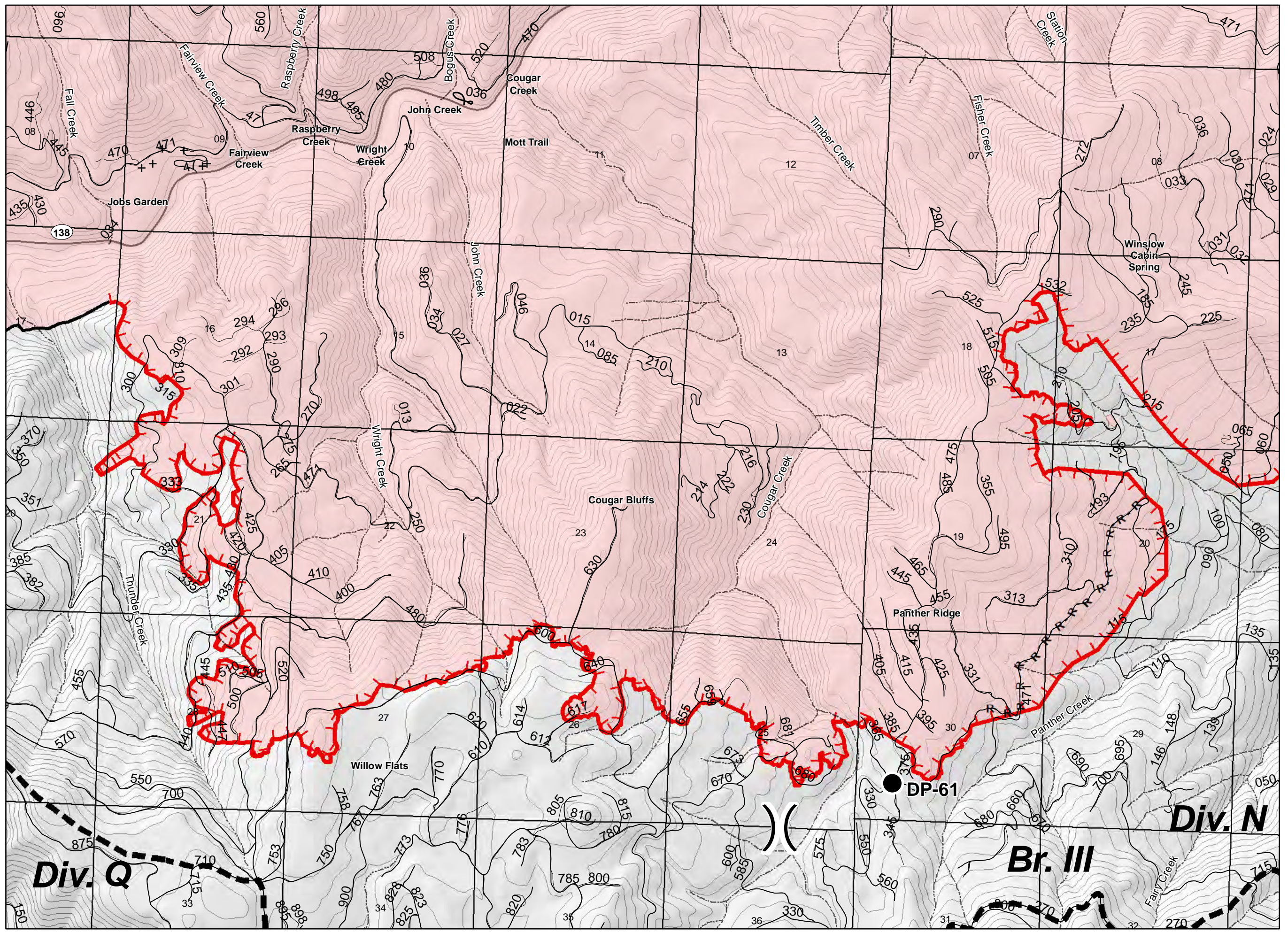
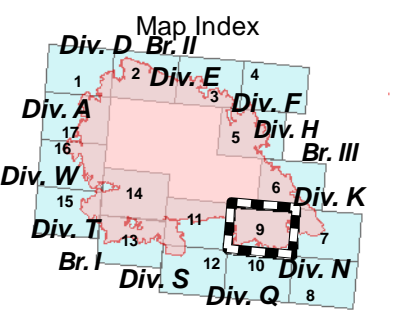


IAP Map
Archie Creek Fire
OR-UPF-000436
9/17/2020 0600-2000 hrs
128,020 Acres
Map Page: 9

- Legend**
- + Residence
 - Contour_100ft
 - Roads
 - - - Streams
 - ✈ Airstrip or Airport
 - ⊙ Camp
 - ✕ Closure
 - ⊕ Dip Site
 - Drop Point
 - ⊗ Fire Origin
 - Helispot
 - WX Mobile Weather Unit
 - Ⓡ Repeater
 - ⚠ Safety Zone
 - ⊙ Spot Fire
 - Ⓢ Staging Area
 - ⊕ Water Development or Draft Site
 - ⚠ Value at Risk
 -) (Division Break
 - || Branch Break
 - ▬ Uncontrolled Fire Edge
 - ▬ Contained Line
 - ⊗ Completed Dozer Line
 - H - Completed Hand Line
 - R - Road as Completed Line
 - ⊕ Completed Burnout
 - ▬ Planned Fire Line
 - Planned Secondary Line
 - ➡ Management Action Point
 - ▭ Wildfire Daily Fire Perimeter

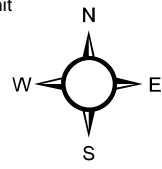


1:30,000
 0 2,000 4,000 Feet



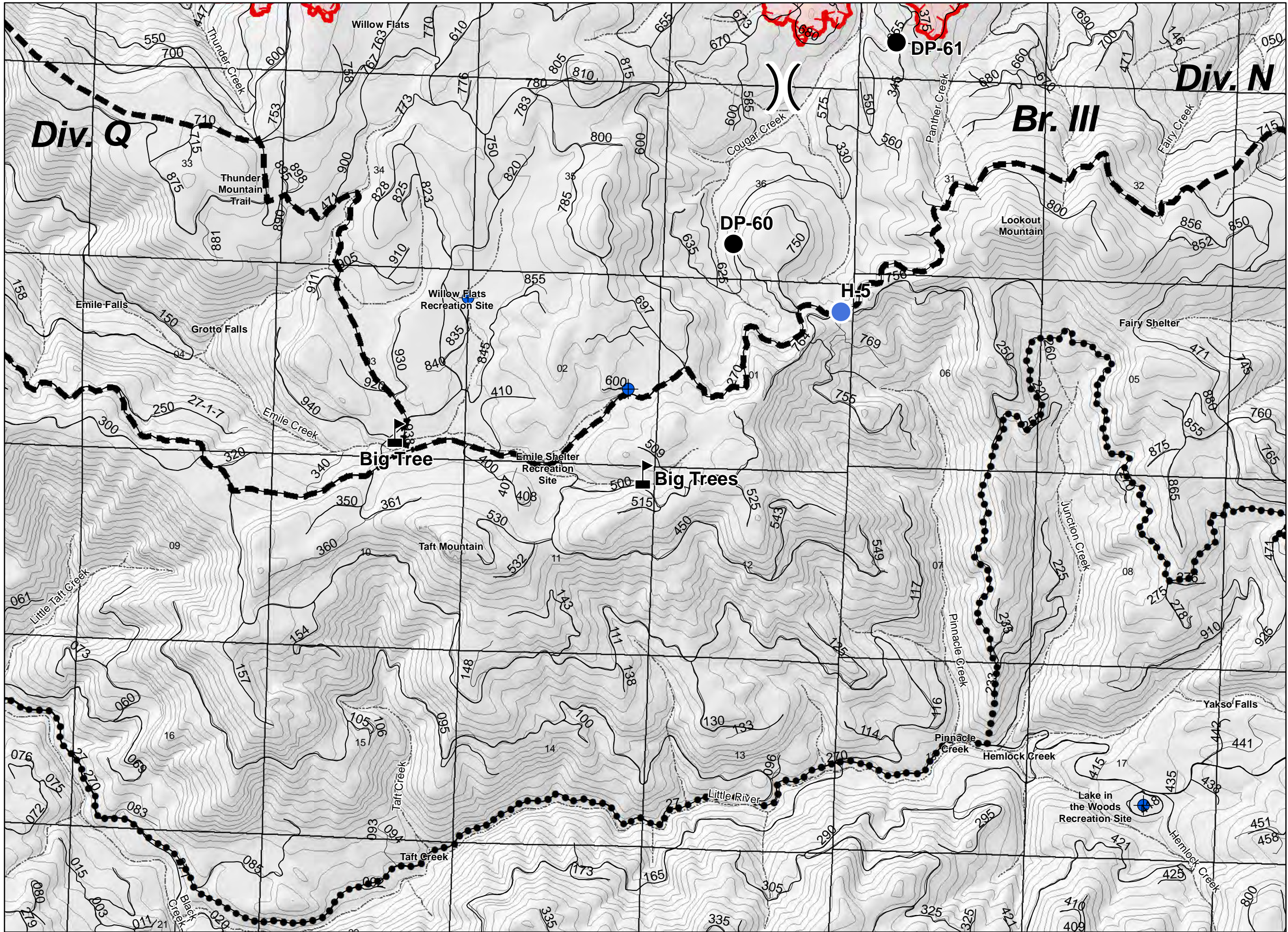
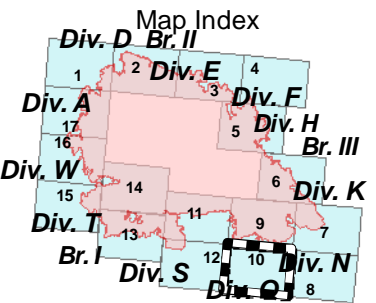
IAP Map
Archie Creek Fire
OR-UPF-000436
9/17/2020 0600-2000 hrs
128,020 Acres
Map Page: 10

- Legend**
- + Residence
 - Contour_100ft
 - Roads
 - - - Streams
 - ✈ Airstrip or Airport
 - ⊙ Camp
 - ✕ Closure
 - ⊕ Dip Site
 - Drop Point
 - ⊗ Fire Origin
 - Helispot
 - WX Mobile Weather Unit
 - Ⓡ Repeater
 - ⚠ Safety Zone
 - ⊙ Spot Fire
 - Ⓢ Staging Area
 - ⊕ Water Development or Draft Site
 - ⚠ Value at Risk
 -) (Division Break
 - || Branch Break
 - ▬ Uncontrolled Fire Edge
 - ▬ Contained Line
 - ⊗ Completed Dozer Line
 - H - Completed Hand Line
 - R - Road as Completed Line
 - ⊙ Completed Burnout
 - ▬ Planned Fire Line
 - Planned Secondary Line
 - ➡ Management Action Point
 - ▬ Wildfire Daily Fire Perimeter



12

1:30,000
 0 2,000 4,000 Feet

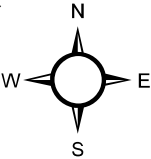


9

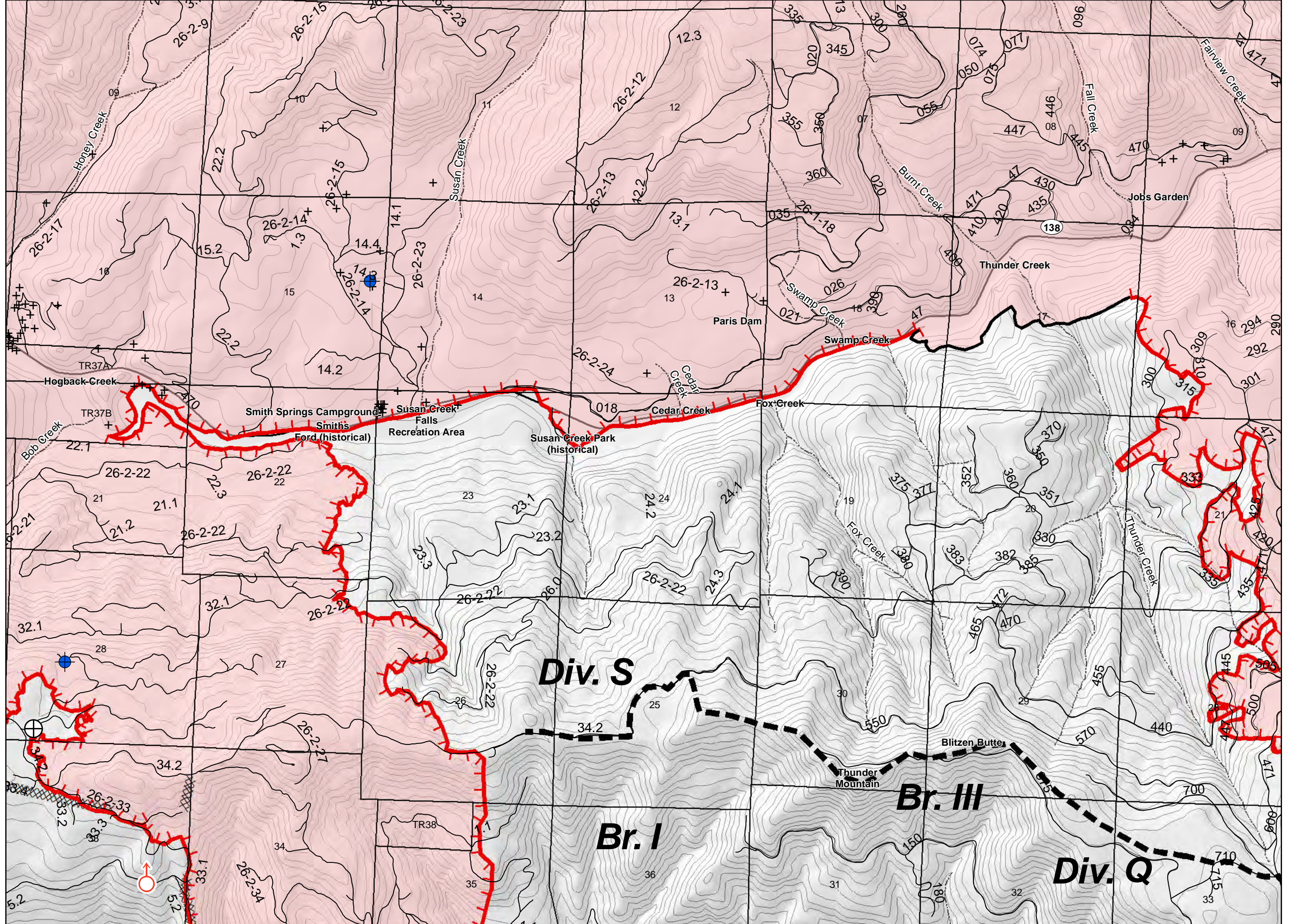
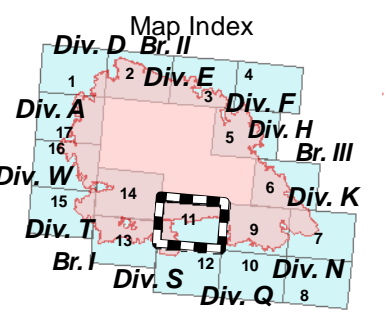
8

IAP Map
Archie Creek Fire
OR-UPF-000436
9/17/2020 0600-2000 hrs
128,020 Acres
Map Page: 11

- Legend**
- + Residence
 - Contour_100ft
 - Roads
 - Streams
 - ✈ Airstrip or Airport
 - ⊙ Camp
 - ✕ Closure
 - ⊕ Dip Site
 - Drop Point
 - ⊗ Fire Origin
 - Helispot
 - WX Mobile Weather Unit
 - Ⓡ Repeater
 - ⚠ Safety Zone
 - ⊙ Spot Fire
 - Ⓢ Staging Area
 - ⊕ Water Development or Draft Site
 - ⚠ Value at Risk
 -) (Division Break
 - || Branch Break
 - ▬ Uncontrolled Fire Edge
 - ▬ Contained Line
 - ⊗ Completed Dozer Line
 - H - Completed Hand Line
 - R - Road as Completed Line
 - ⊕ Completed Burnout
 - ▬ Planned Fire Line
 - Planned Secondary Line
 - ➡ Management Action Point
 - ▭ Wildfire Daily Fire Perimeter



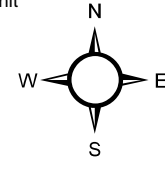
1:30,000
 0 2,000 4,000 Feet



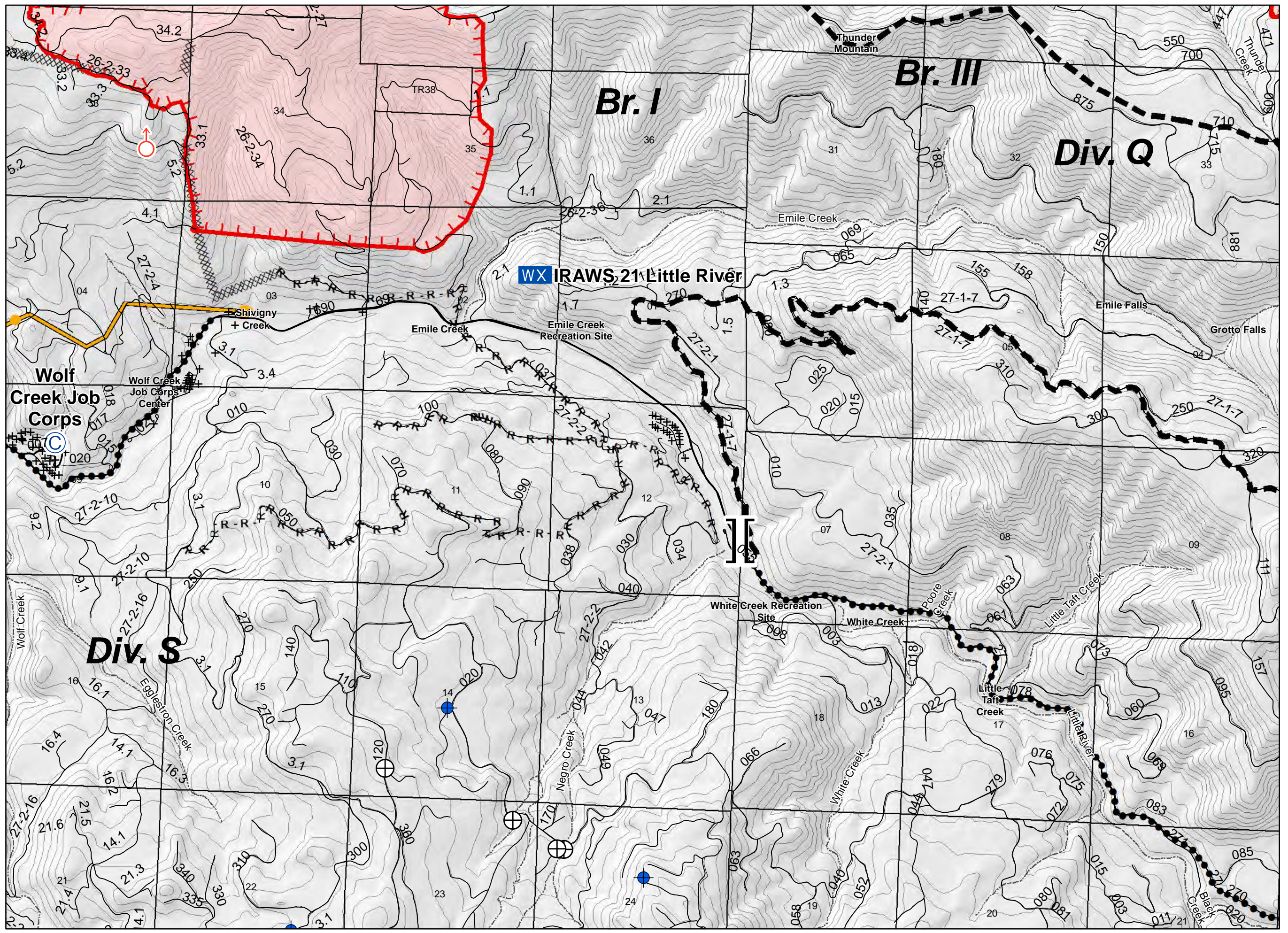
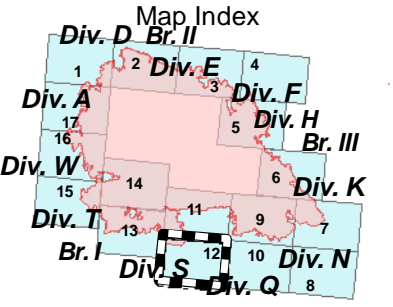
IAP Map
Archie Creek Fire
OR-UPF-000436
9/17/2020 0600-2000 hrs
128,020 Acres
Map Page: 12

Legend

- + Residence
- Contour_100ft
- Roads
- - - Streams
- ✈ Airstrip or Airport
- ⊙ Camp
- ✕ Closure
- ⊕ Dip Site
- Drop Point
- ⊗ Fire Origin
- Helispot
- WX Mobile Weather Unit
- Ⓡ Repeater
- ⚠ Safety Zone
- ⊙ Spot Fire
- Ⓢ Staging Area
- ⊕ Water Development or Draft Site
- ⚠ Value at Risk
-) (Division Break
- || Branch Break
- ▬ Uncontrolled Fire Edge
- ▬ Contained Line
- ▬ Completed Dozer Line
- H - Completed Hand Line
- R - Road as Completed Line
- ⊕ Completed Burnout
- ▬ Planned Fire Line
- Planned Secondary Line
- Management Action Point
- ▭ Wildfire Daily Fire Perimeter

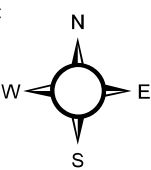


1:30,000
 0 2,000 4,000 Feet

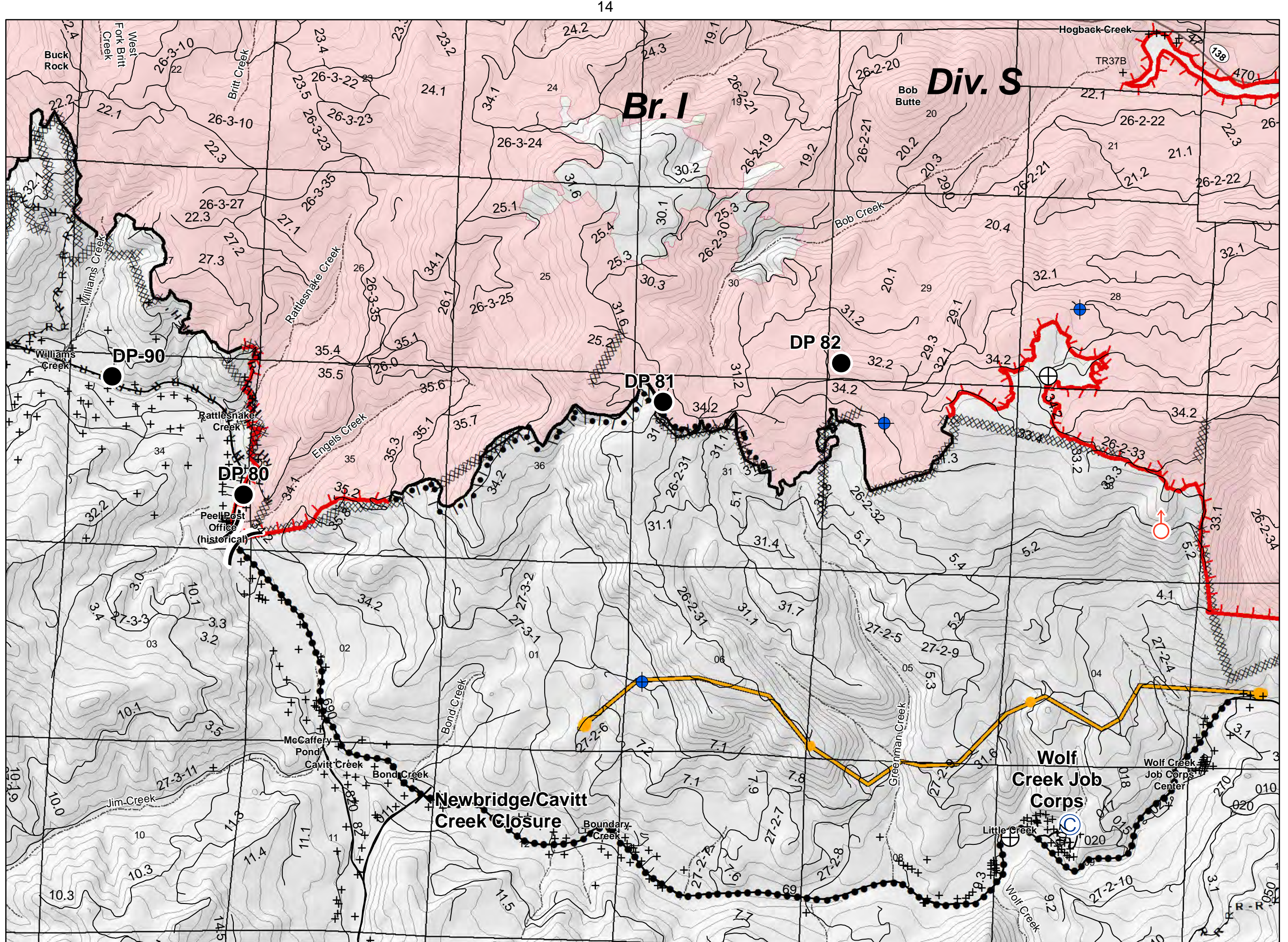
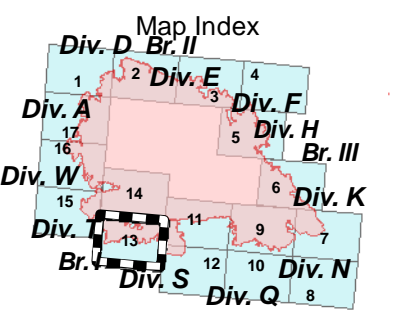


IAP Map
Archie Creek Fire
OR-UPF-000436
9/17/2020 0600-2000 hrs
128,020 Acres
Map Page: 13

- Legend**
- + Residence
 - Contour_100ft
 - Roads
 - Streams
 - ✈ Airstrip or Airport
 - ⊙ Camp
 - ✕ Closure
 - ⊕ Dip Site
 - Drop Point
 - ⊗ Fire Origin
 - Helispot
 - WX Mobile Weather Unit
 - Ⓡ Repeater
 - ⚠ Safety Zone
 - ⊙ Spot Fire
 - Ⓢ Staging Area
 - ⊕ Water Development or Draft Site
 - ⚠ Value at Risk
 -) (Division Break
 - || Branch Break
 - ▬ Uncontrolled Fire Edge
 - ▬ Contained Line
 - ▬ Completed Dozer Line
 - H - Completed Hand Line
 - R - Road as Completed Line
 - Ⓢ Completed Burnout
 - ▬ Planned Fire Line
 - Planned Secondary Line
 - Management Action Point
 - ▬ Wildfire Daily Fire Perimeter

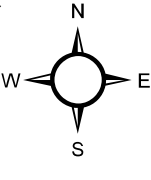


1:30,000
 0 2,000 4,000 Feet

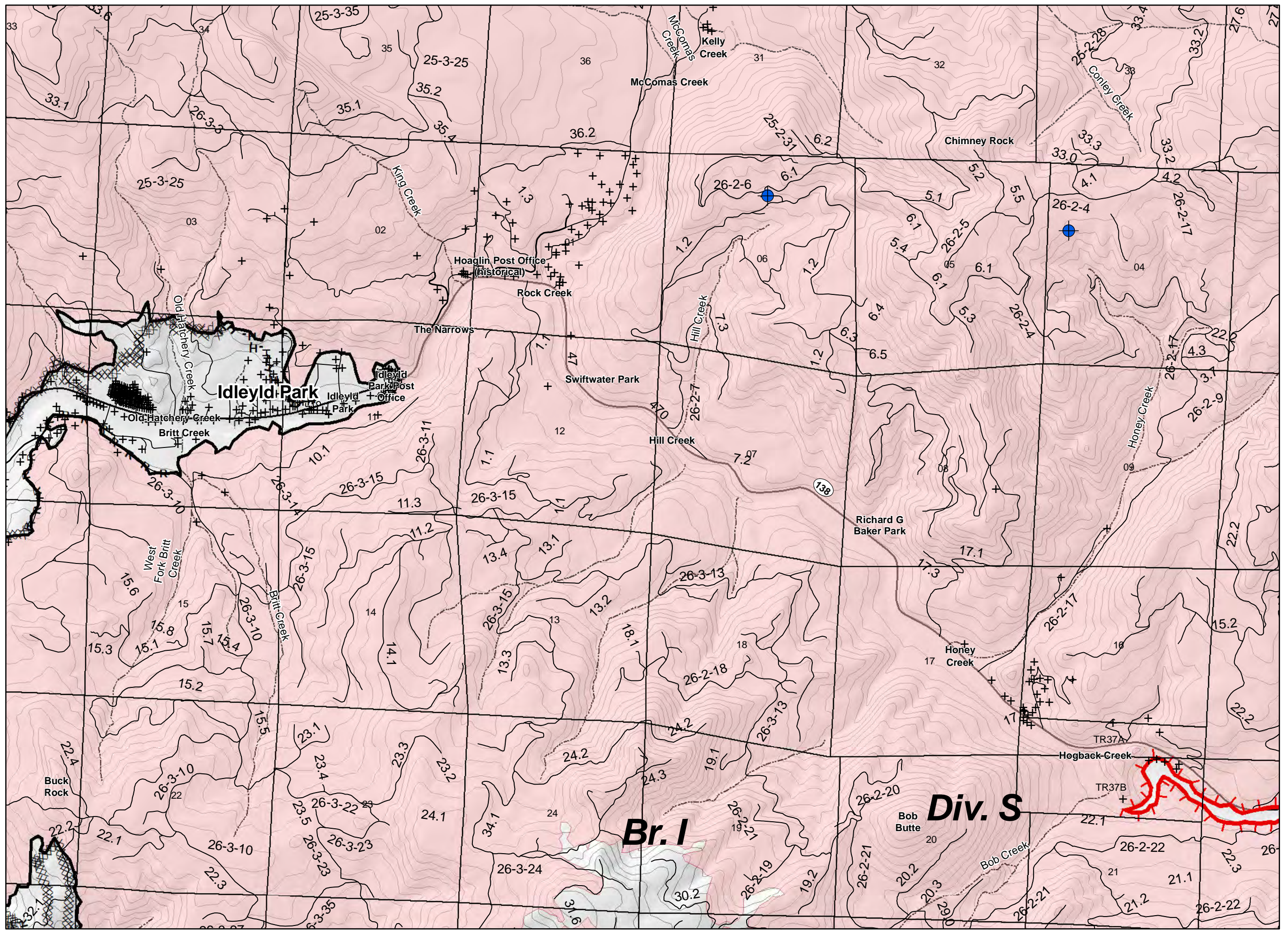
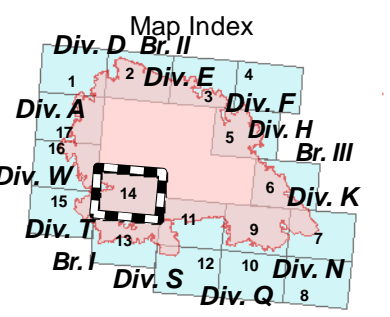


IAP Map
Archie Creek Fire
OR-UPF-000436
9/17/2020 0600-2000 hrs
128,020 Acres
Map Page: 14

- Legend**
- + Residence
 - Contour_100ft
 - Roads
 - Streams
 - ✈ Airstrip or Airport
 - ⊙ Camp
 - ✕ Closure
 - ⊕ Dip Site
 - Drop Point
 - ⊗ Fire Origin
 - Helispot
 - WX Mobile Weather Unit
 - Ⓡ Repeater
 - ⚠ Safety Zone
 - ⊙ Spot Fire
 - Ⓢ Staging Area
 - ⊕ Water Development or Draft Site
 - ⚑ Value at Risk
 -) (Division Break
 - || Branch Break
 - ▬ Uncontrolled Fire Edge
 - ▬ Contained Line
 - ⊗ Completed Dozer Line
 - H - Completed Hand Line
 - R - Road as Completed Line
 - ⊙ Completed Burnout
 - ▬ Planned Fire Line
 - Planned Secondary Line
 - 👉 Management Action Point
 - ▬ Wildfire Daily Fire Perimeter

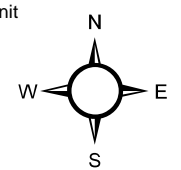


1:30,000
 0 2,000 4,000 Feet

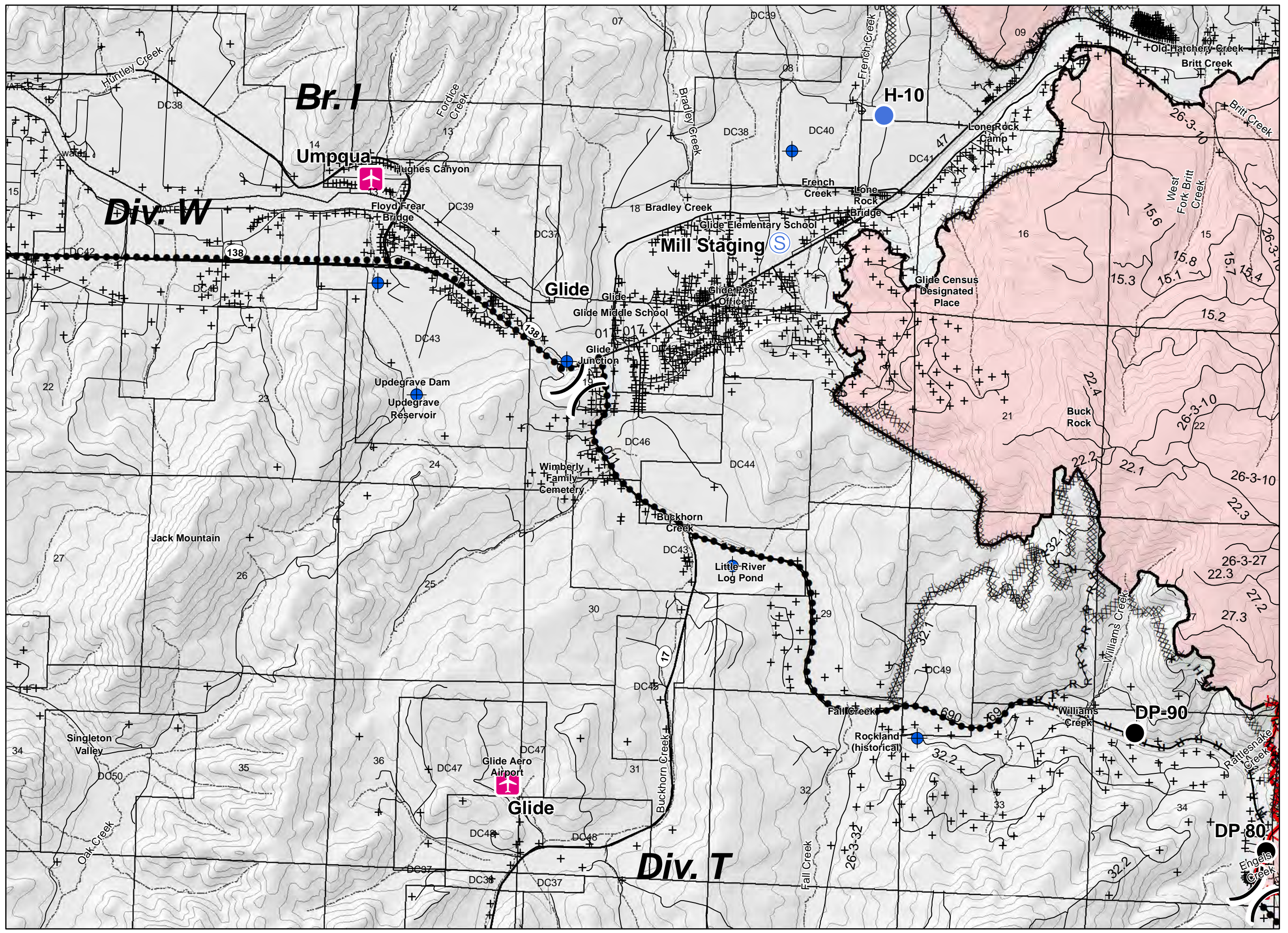
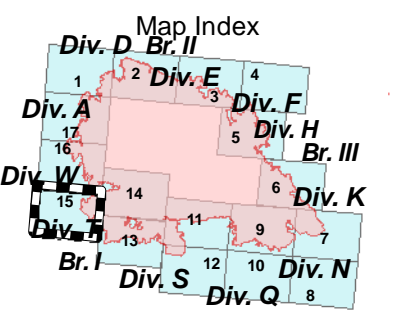


IAP Map
Archie Creek Fire
OR-UPF-000436
9/17/2020 0600-2000 hrs
128,020 Acres
Map Page: 15

- Legend**
- + Residence
 - Contour_100ft
 - Roads
 - Streams
 - ✈ Airstrip or Airport
 - ⊙ Camp
 - ✕ Closure
 - ⊕ Dip Site
 - Drop Point
 - ⊗ Fire Origin
 - Helispot
 - WX Mobile Weather Unit
 - Ⓡ Repeater
 - ⚠ Safety Zone
 - ⊙ Spot Fire
 - Ⓢ Staging Area
 - ⊕ Water Development or Draft Site
 - ⚑ Value at Risk
 -) (Division Break
 - || Branch Break
 - ▬ Uncontrolled Fire Edge
 - ▬ Contained Line
 - ⊗ Completed Dozer Line
 - H - Completed Hand Line
 - R - Road as Completed Line
 - ⊙ Completed Burnout
 - ▬ Planned Fire Line
 - Planned Secondary Line
 - ➡ Management Action Point
 - Wildfire Daily Fire Perimeter

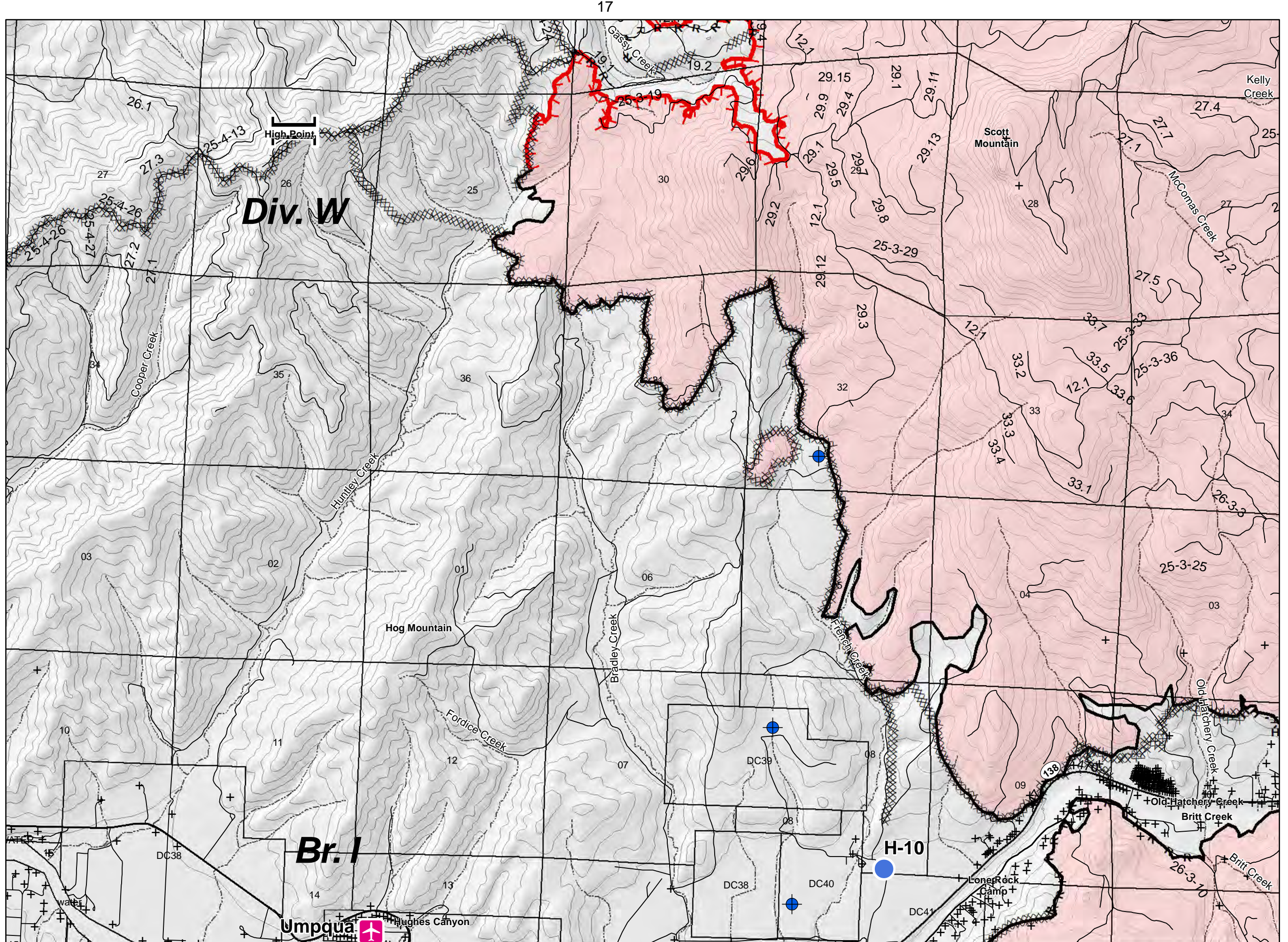
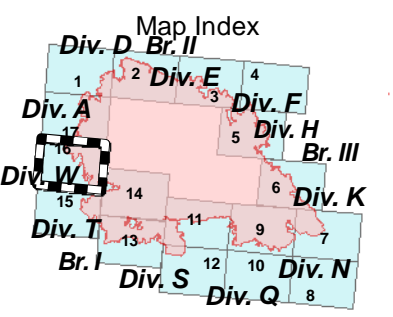
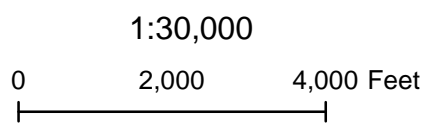
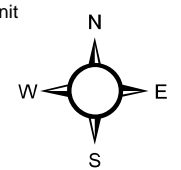


1:30,000
 0 2,000 4,000 Feet



IAP Map
Archie Creek Fire
OR-UPF-000436
9/17/2020 0600-2000 hrs
128,020 Acres
Map Page: 16

- Legend**
- + Residence
 - Contour_100ft
 - Roads
 - - - Streams
 - ✈ Airstrip or Airport
 - ⊙ Camp
 - ✕ Closure
 - ⊕ Dip Site
 - Drop Point
 - ⊗ Fire Origin
 - Helispot
 - WX Mobile Weather Unit
 - Ⓡ Repeater
 - ⚠ Safety Zone
 - ⊙ Spot Fire
 - Ⓢ Staging Area
 - ⊕ Water Development or Draft Site
 - ⚑ Value at Risk
 -) (Division Break
 - || Branch Break
 - ▬ Uncontrolled Fire Edge
 - ▬ Contained Line
 - ▬ Completed Dozer Line
 - H - Completed Hand Line
 - R - Road as Completed Line
 - ⊕ Completed Burnout
 - ▬ Planned Fire Line
 - Planned Secondary Line
 - ➡ Management Action Point
 - ▭ Wildfire Daily Fire Perimeter



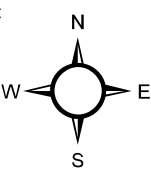
17

14

15

IAP Map
Archie Creek Fire
OR-UPF-000436
9/17/2020 0600-2000 hrs
128,020 Acres
Map Page: 17

- Legend**
- + Residence
 - Contour_100ft
 - Roads
 - Streams
 - ✈ Airstrip or Airport
 - ⊙ Camp
 - ✕ Closure
 - ⊕ Dip Site
 - Drop Point
 - ⊗ Fire Origin
 - Helispot
 - WX Mobile Weather Unit
 - Ⓡ Repeater
 - ⚠ Safety Zone
 - ⊙ Spot Fire
 - Ⓢ Staging Area
 - ⊕ Water Development or Draft Site
 - ⚠ Value at Risk
 -) (Division Break
 - || Branch Break
 - ▬ Uncontrolled Fire Edge
 - ▬ Contained Line
 - ▬ Completed Dozer Line
 - H - Completed Hand Line
 - R - Road as Completed Line
 - ⊕ Completed Burnout
 - ▬ Planned Fire Line
 - Planned Secondary Line
 - Management Action Point
 - ▬ Wildfire Daily Fire Perimeter



1:30,000
 0 2,000 4,000 Feet

