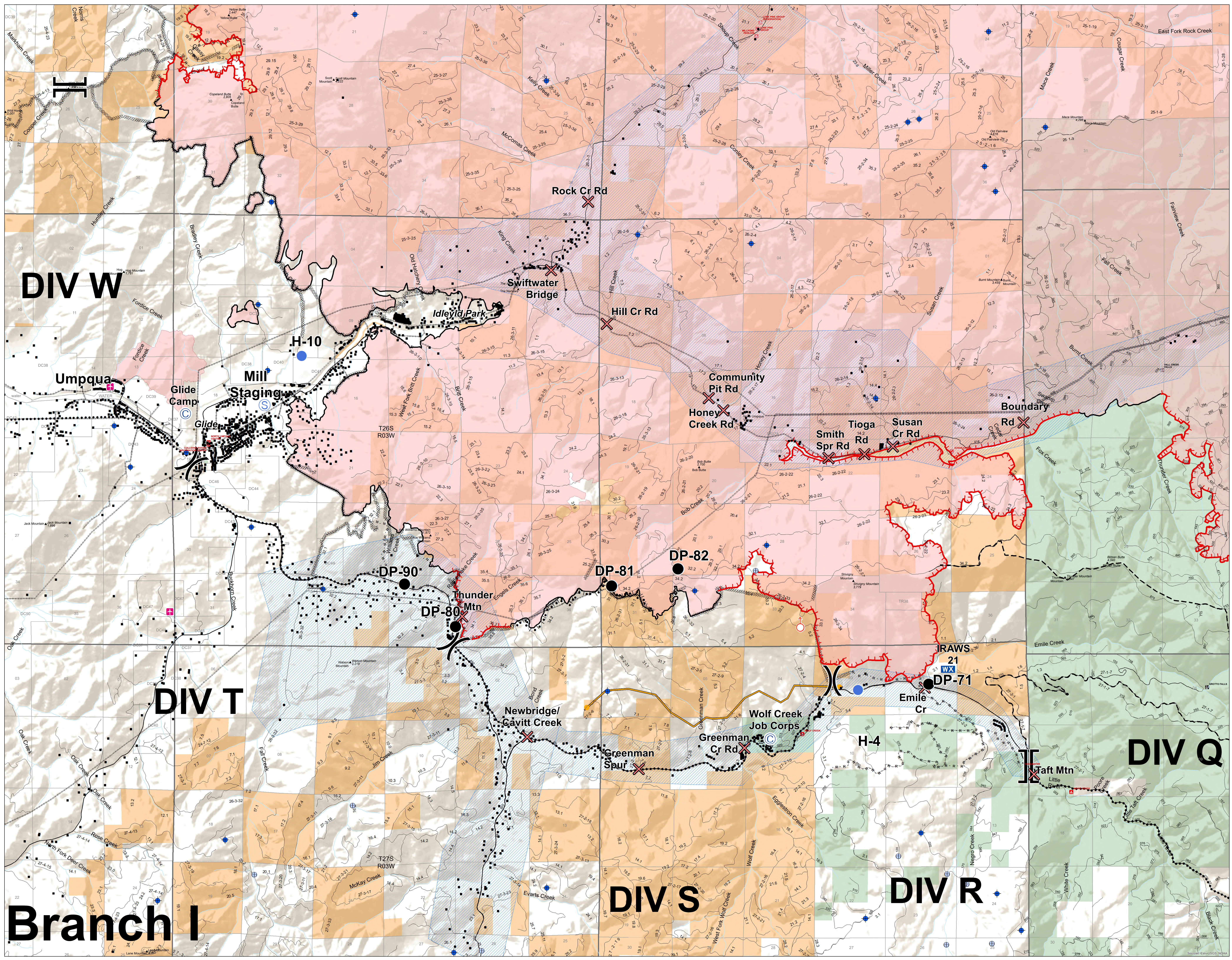




**Operations
Branch 1
Map**
131,598 Acres

- Legend**
- Structures
 - ✈ Airstrip or Airport
 - ⊙ Camp
 - ✕ Closure
 - Dip Site
 - Drop Point
 - ⊗ Fire Origin
 - ⬇ Helispot
 - Ⓜ Incident Command Post
 - Ⓜ Internet Access
 - Ⓜ Mobile Weather Unit
 - Ⓜ Repeater
 - Ⓜ Retardant/Mud Pit
 - Ⓜ Safety Zone
 - Ⓜ Spot Fire
 - Ⓜ Staging Area
 - Ⓜ Restricted Water Source
 - Ⓜ Potential Draft Site
 - Ⓜ Value at Risk
 - ✕ Division Break
 - Ⓜ Branch Break
- Road Class**
- Arterial
 - Resource
 - Electric Transmission Lines
 - Uncontrolled Fire Edge
 - Contained Line
 - Ⓜ Completed Dozer Line
 - Ⓜ Completed Hand Line
 - Ⓜ Road as Completed Line
 - Access or Improved Road
 - Ⓜ Completed Burnout
 - Ⓜ Planned Fire Line
 - Ⓜ Planned Secondary Line
 - Ⓜ Temporary Flight Restriction
 - Ⓜ Management Action Point
 - Ⓜ Level 1 Evacuation
 - Ⓜ Level 2 Evacuation
 - Ⓜ Planned Timber Sales
 - Ⓜ Active Timber Sales
 - Ⓜ Wildfire Daily Fire Perimeter
 - Ⓜ Bureau of Indian Affairs
 - Ⓜ Bureau of Land Management
 - Ⓜ U.S. Forest Service
- 9/20/2020 @ 2015
NAD 1983 UTM Zone 10N
SA Red Team GIS
Latest Intel:
20200919 @ 2016 hrs



Branch I

