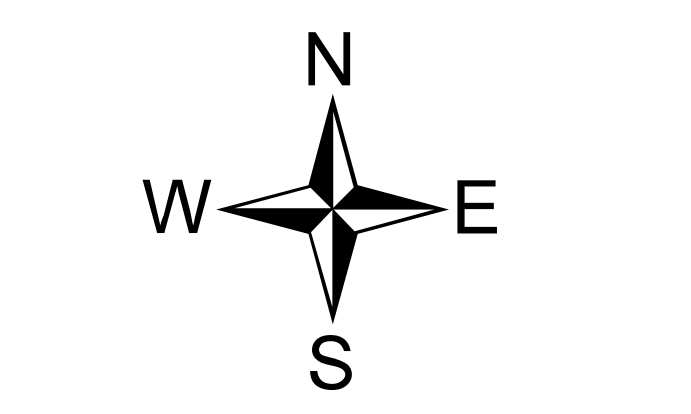


Briefing Map

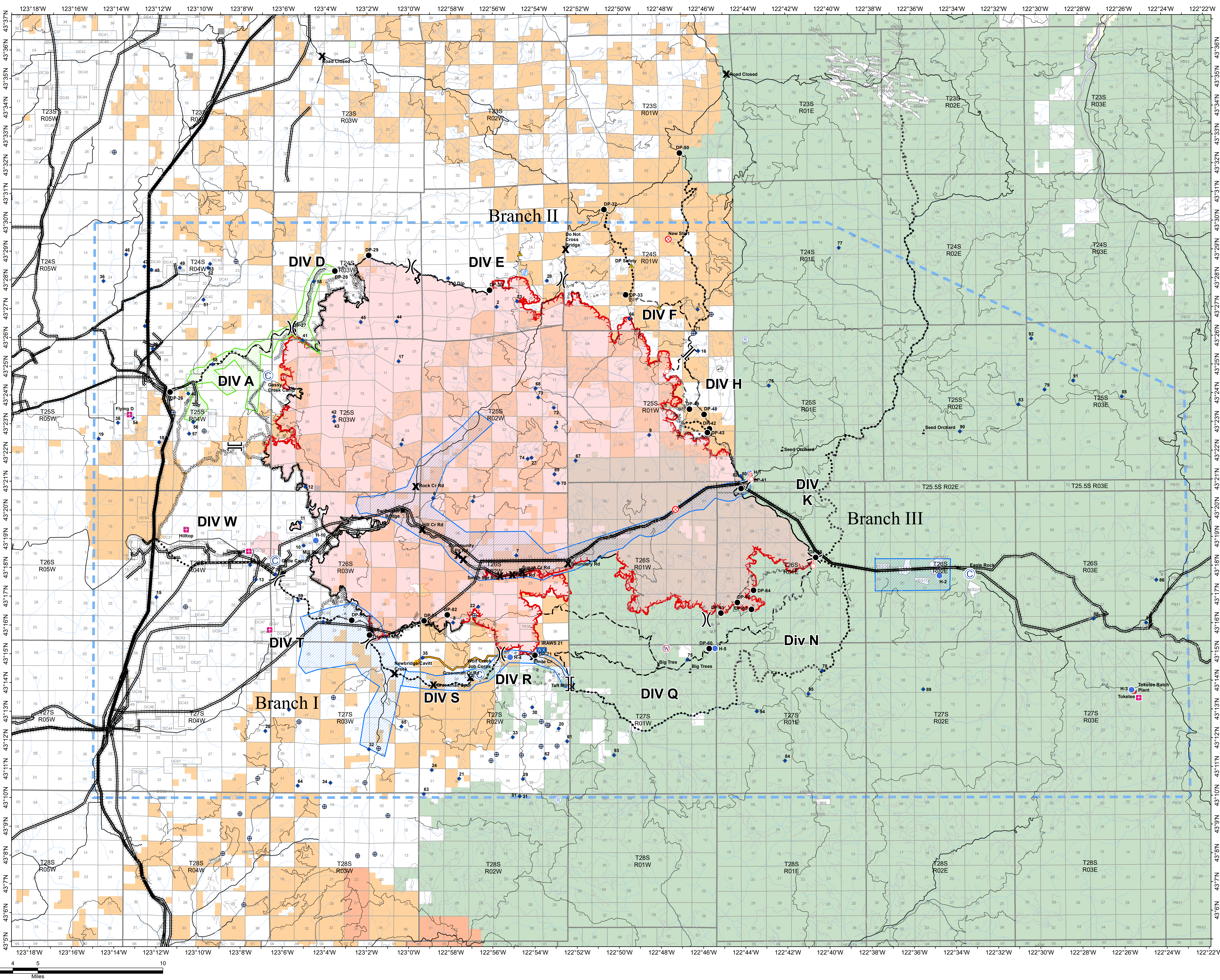
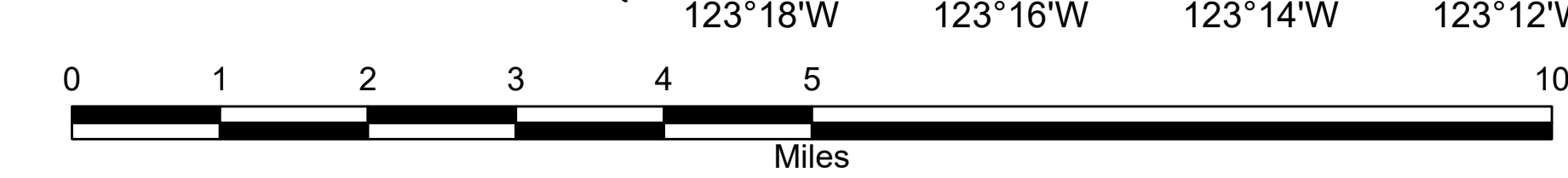
Archie Creek
OR-UPF-000436
9/21/2020
131,598 Acres



- Airstrip or Airport
- Camp
- Closure
- Dip Site
- Drop Point
- Fire Origin
- Helispot
- Internet Access
- Mobile Weather Unit
- Repeater
- Retardant/Mud Pit
- Safety Zone
- Spot Fire
- Staging Area
- Stream Crossing
- Restricted Water Source
- Water Development or Draft Site
- Value at Risk
- Division Break
- Branch Break
- Closure
- Road Guard
- Major road
- Intermediate road
- Minor road
- BPA/Transmission Lines
- Section
- Township and Range
- Evacuation Level 1
- Evacuation Level 2
- Uncontrolled Fire Edge
- Contained Line
- Completed Dozer Line
- H - H - H Completed Hand Line
- R - R - R Road as Completed Line
- Access or Improved Road
- Completed Burnout
- Planned Fire Line
- Planned Secondary Line
- Temporary Flight Restriction
- Management Action Post
- Wildlife Daily Fire Perimeter
- Bureau of Indian Affairs
- Bureau of Land Management
- Corps of Engineers
- Lands Managed by Private
- Local Government
- State Agency
- U.S. Forest Service
- Undetermined



9/20/2020 @ 2048
NAD 1983 UTM Zone 10N
SA Red Team GIS
Latest Intel:
20200919 @ 2016



43°37'N 43°36'N 43°35'N 43°34'N 43°33'N 43°32'N 43°31'N 43°30'N 43°29'N 43°28'N 43°27'N 43°26'N 43°25'N 43°24'N 43°23'N 43°22'N 43°21'N 43°20'N 43°19'N 43°18'N 43°17'N 43°16'N 43°15'N 43°14'N 43°13'N 43°12'N 43°11'N 43°10'N 43°9'N 43°8'N 43°7'N 43°6'N

123°18'W 123°16'W 123°14'W 123°12'W 123°10'W 123°8'W 123°6'W 123°4'W 123°2'W 123°0'W 122°58'W 122°56'W 122°54'W 122°52'W 122°50'W 122°48'W 122°46'W 122°44'W 122°42'W 122°40'W 122°38'W 122°36'W 122°34'W 122°32'W 122°30'W 122°28'W 122°26'W 122°24'W 122°22'W