

# IAP Map

Archie Creek Fire

OR-UPF-000436

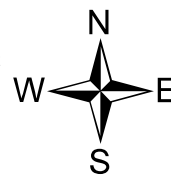
9/23/2020 0600 - 2000hrs

131,598 Acres

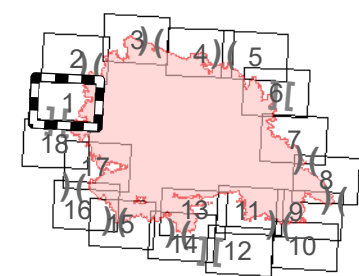
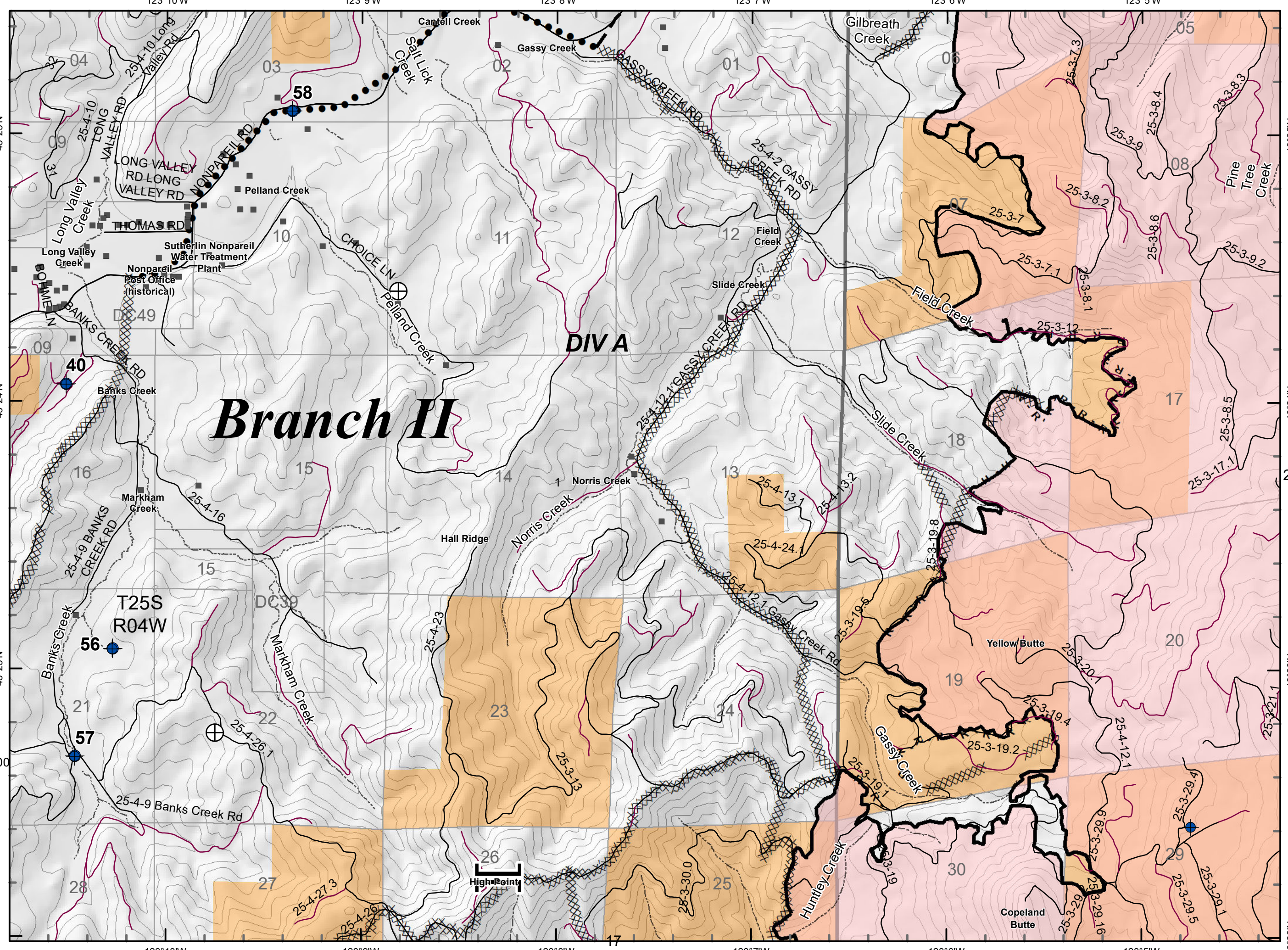
Map Page: 1

## Div A

- Residence
- Roads
- Streams
- Airstrip or Airport
- Camp
- Closure
- Dip Site
- Drop Point
- Fire Origin
- Helispot
- Mobile Weather Unit
- Repeater
- Safety Zone
- Spot Fire
- Staging Area
- Water Development or Draft Site
- Value at Risk
- Division Break
- Branch Break
- Uncontrolled Fire Edge
- Contained Line
- Completed Dozer Line
- Completed Hand Line
- Road as Completed Line
- Completed Burnout
- Planned Fire Line
- Planned Secondary Line
- Management Action Point
- Wildfire Daily Fire Perimeter



43°25'N  
43°24'N  
43°23'N  
43°22'N



Index Map

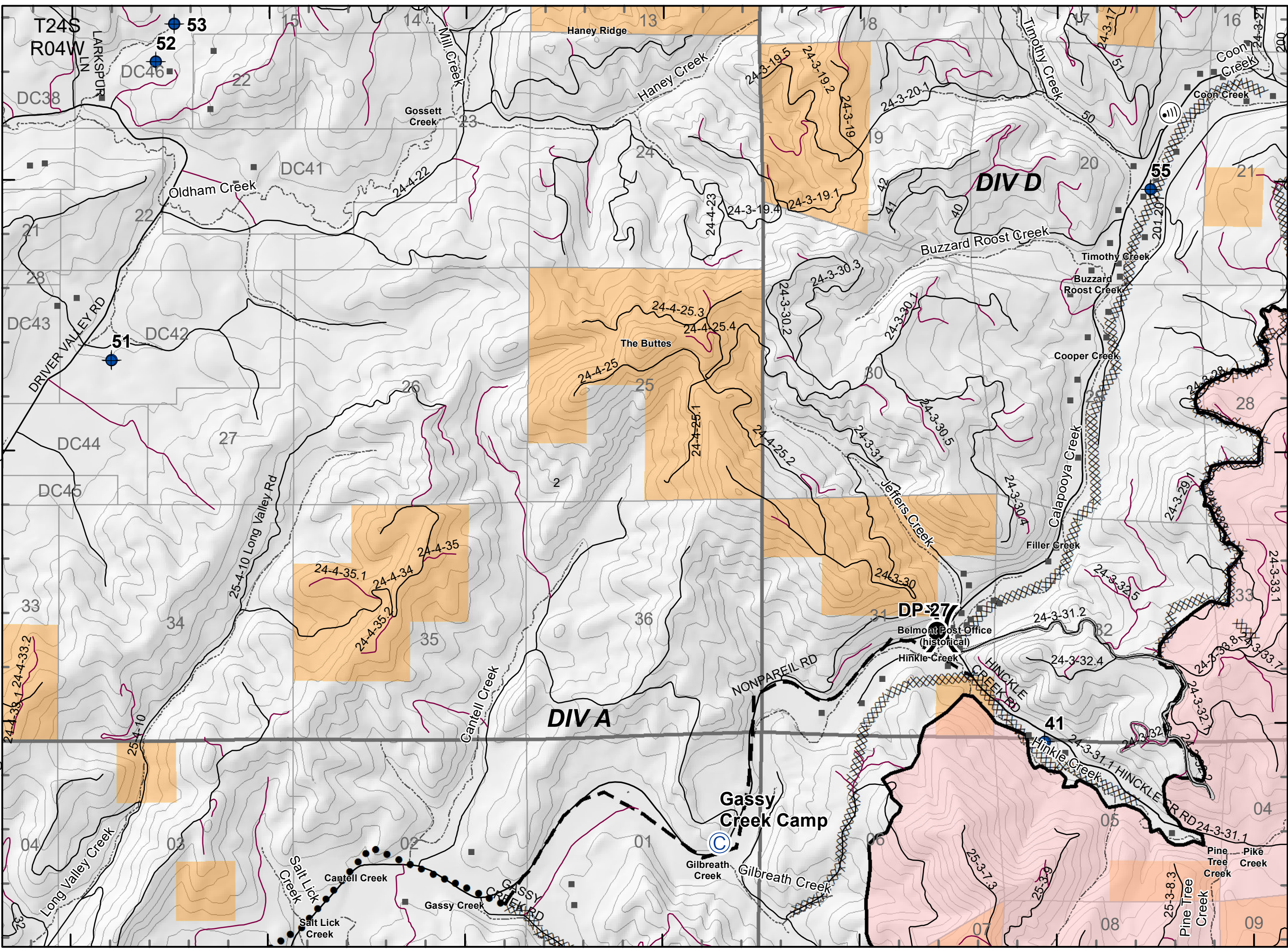
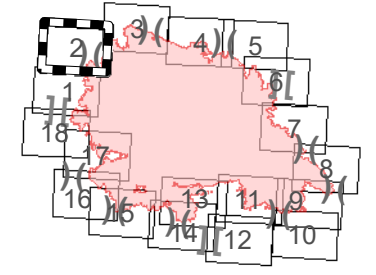
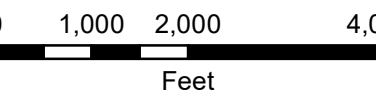
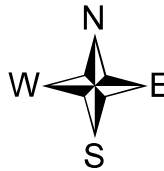
123°10'W 123°9'W 123°8'W 123°7'W 123°6'W 123°5'W



# IAP Map

Archie Creek Fire  
OR-UPF-000436  
9/23/2020 0600 - 2000hrs  
131,598 Acres  
Map Page: 2  
**Div A, D**

- Residence
- Roads
- Streams
- Airstrip or Airport
- Camp
- Closure
- Dip Site
- Drop Point
- Fire Origin
- Helispot
- Mobile Weather Unit
- Repeater
- Safety Zone
- Spot Fire
- Staging Area
- Water Development or Draft Site
- Value at Risk
- Division Break
- Branch Break
- Uncontrolled Fire Edge
- Contained Line
- Completed Dozer Line
- Completed Hand Line
- Road as Completed Line
- Completed Burnout
- Planned Fire Line
- Planned Secondary Line
- Management Action Point
- Wildfire Daily Fire Perimeter





# IAP Map

Archie Creek Fire

OR-UPF-000436

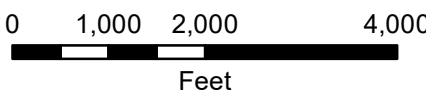
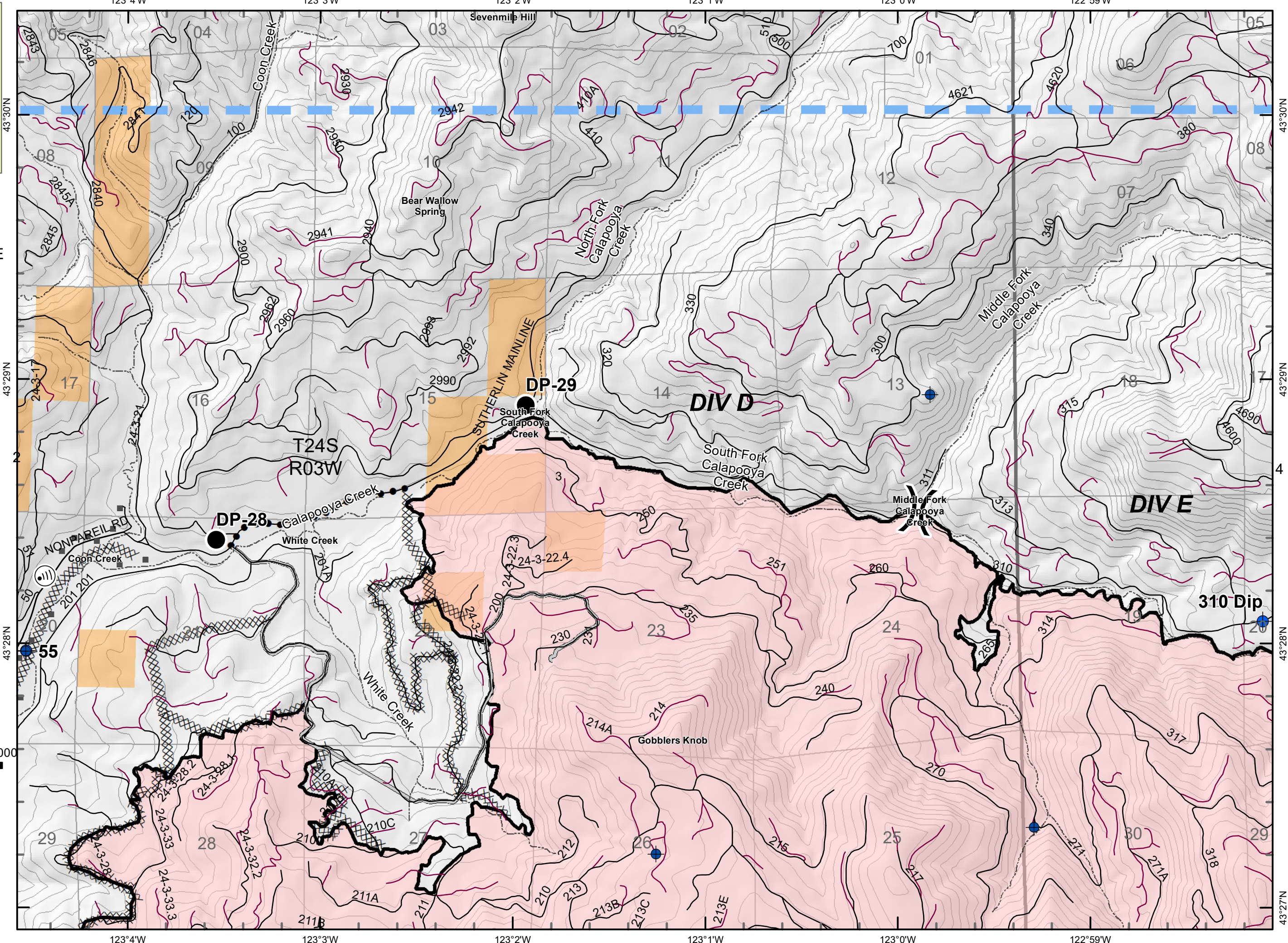
9/23/2020 0600 - 2000hrs

131,598 Acres

Map Page: 3

## Div D, E

- Residence
- Roads
- Streams
- Airstrip or Airport
- Camp
- Closure
- Dip Site
- Drop Point
- Fire Origin
- Helispot
- Mobile Weather Unit
- Repeater
- Safety Zone
- Spot Fire
- Staging Area
- Water Development or Draft Site
- Value at Risk
- Division Break
- Branch Break
- Uncontrolled Fire Edge
- Contained Line
- Completed Dozer Line
- Completed Hand Line
- Road as Completed Line
- Completed Burnout
- Planned Fire Line
- Planned Secondary Line
- Management Action Point
- Wildfire Daily Fire Perimeter



Index Map



# IAP Map

Archie Creek Fire

OR-UPF-000436

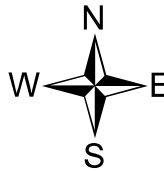
9/23/2020 0600 - 2000hrs

131,598 Acres

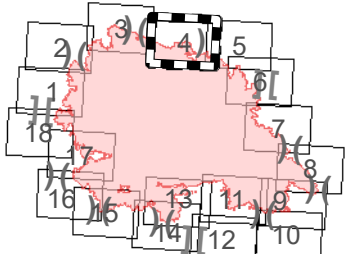
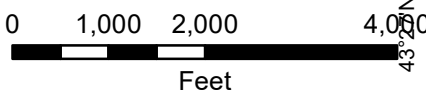
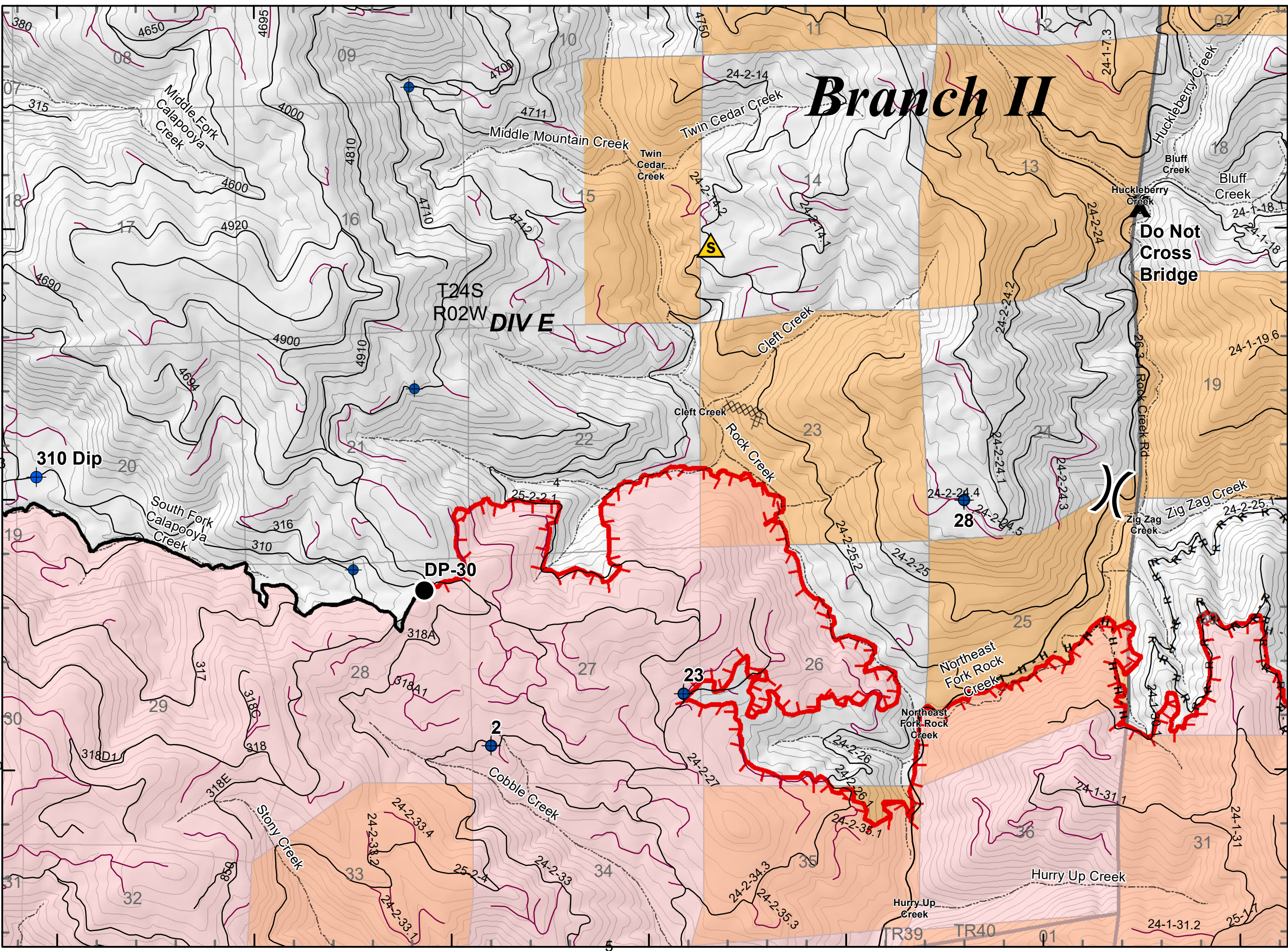
Map Page: 4

## Div E

- Residence
- Roads
- Streams
- Airstrip or Airport
- Camp
- Closure
- Dip Site
- Drop Point
- Fire Origin
- Helispot
- Mobile Weather Unit
- Repeater
- Safety Zone
- Spot Fire
- Staging Area
- Water Development or Draft Site
- Value at Risk
- Division Break
- Branch Break
- Uncontrolled Fire Edge
- Contained Line
- Completed Dozer Line
- Completed Hand Line
- Road as Completed Line
- Completed Burnout
- Planned Fire Line
- Planned Secondary Line
- Management Action Point
- Wildfire Daily Fire Perimeter



43°29'N  
43°28'N  
43°27'N  
122°58'W  
122°57'W  
122°56'W  
122°55'W  
122°54'W  
122°53'W  
122°52'W



Index Map



# IAP Map

Archie Creek Fire

OR-UPF-000436

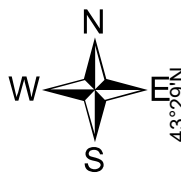
9/23/2020 0600 - 2000hrs

131,598 Acres

Map Page: 5

## Div F

- Residence
- Roads
- Streams
- Airstrip or Airport
- Camp
- Closure
- Dip Site
- Drop Point
- Fire Origin
- Helispot
- Mobile Weather Unit
- Repeater
- Safety Zone
- Spot Fire
- Staging Area
- Water Development or Draft Site
- Value at Risk
- Division Break
- Branch Break
- Uncontrolled Fire Edge
- Contained Line
- Completed Dozer Line
- Completed Hand Line
- Road as Completed Line
- Completed Burnout
- Planned Fire Line
- Planned Secondary Line
- Management Action Point
- Wildfire Daily Fire Perimeter

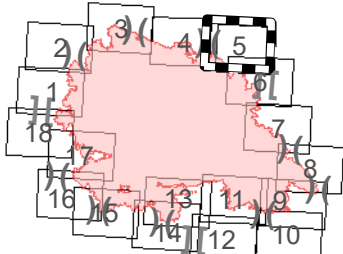


43°29'N

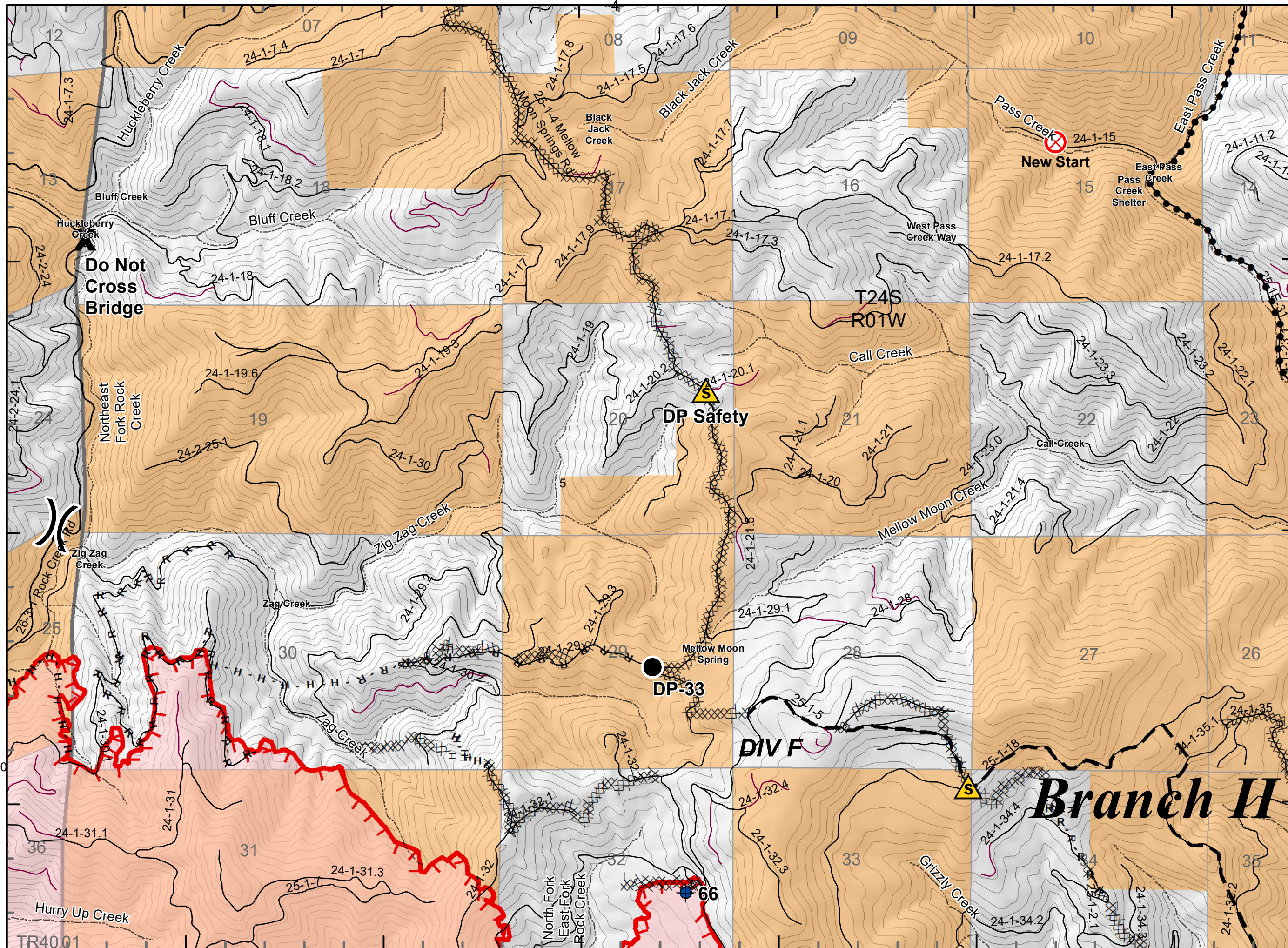
43°28'N

43°27'N

0 1,000 2,000 4,000 Feet



Index Map



43°29'N

43°28'N

43°27'N

0 1,000 2,000 4,000 Feet

122°52'W

122°51'W

122°50'W

122°49'W

122°48'W

122°47'W



# IAP Map

Archie Creek Fire

OR-UPF-000436

9/23/2020 0600 - 2000hrs

131,598 Acres

Map Page: 6

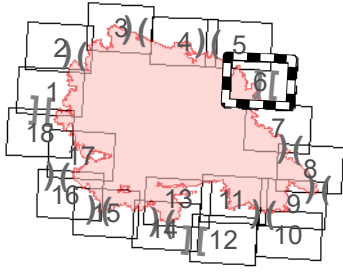
## Div F, H

- Residence
- Roads
- Streams
- Airstrip or Airport
- Camp
- Closure
- Dip Site
- Drop Point
- Fire Origin
- Helispot
- Mobile Weather Unit
- Repeater
- Safety Zone
- Spot Fire
- Staging Area
- Water Development or Draft Site
- Value at Risk
- Division Break
- Branch Break
- Uncontrolled Fire Edge
- Contained Line
- Completed Dozer Line
- Completed Hand Line
- Road as Completed Line
- Completed Burnout
- Planned Fire Line
- Planned Secondary Line
- Management Action Point
- Wildfire Daily Fire Perimeter

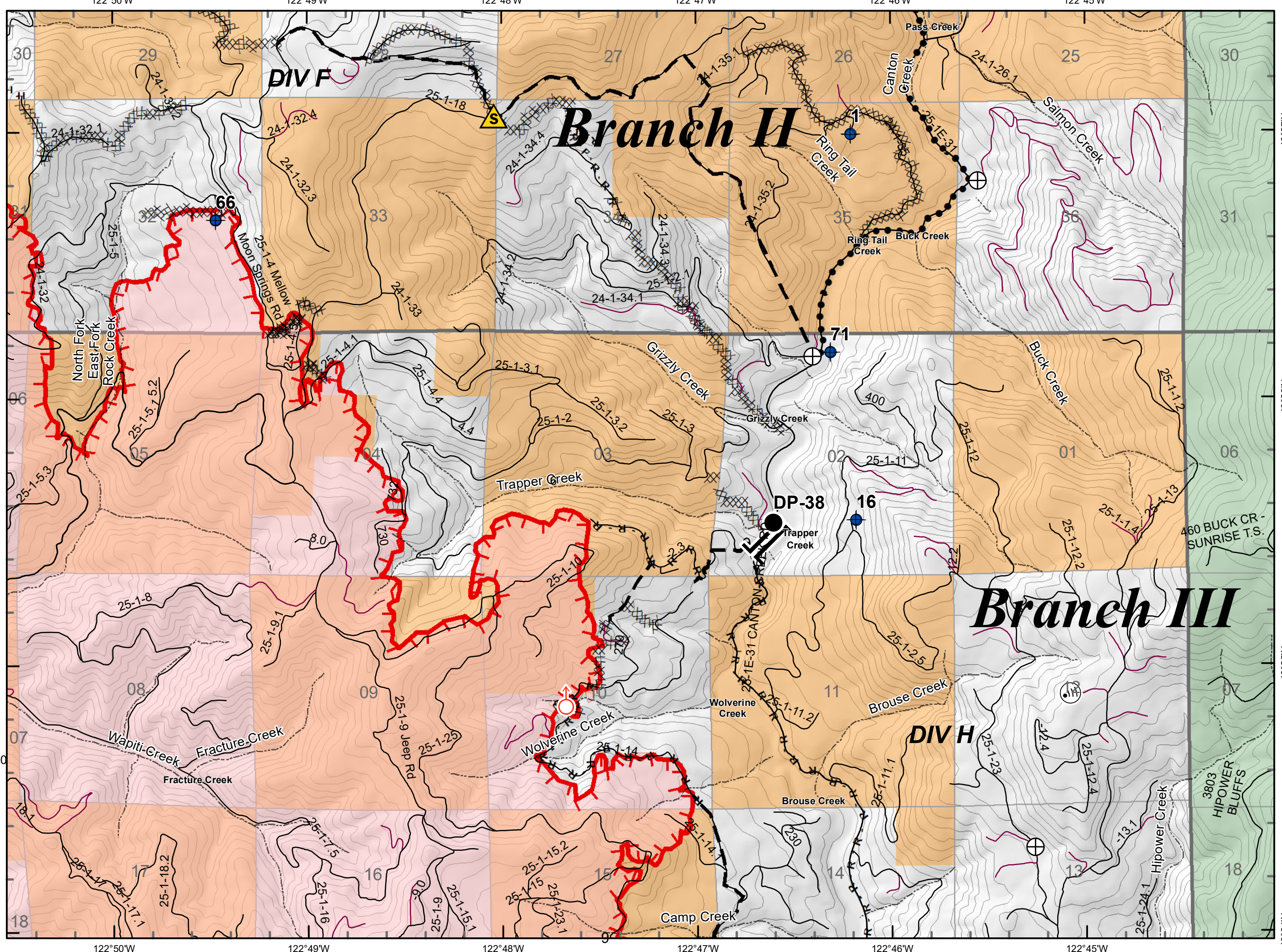


0 1,000 2,000 4,000

Feet



Index Map





# IAP Map

Archie Creek Fire

OR-UPF-000436

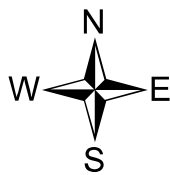
9/23/2020 0600 - 2000hrs

131,598 Acres

Map Page: 7

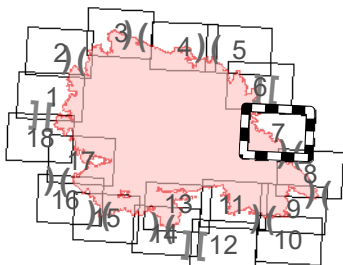
## Div H

- Residence
- Roads
- Streams
- Airstrip or Airport
- Camp
- Closure
- Dip Site
- Drop Point
- Fire Origin
- Helispot
- Mobile Weather Unit
- Repeater
- Safety Zone
- Spot Fire
- Staging Area
- Water Development or Draft Site
- Value at Risk
- Division Break
- Branch Break
- Uncontrolled Fire Edge
- Contained Line
- Completed Dozer Line
- Completed Hand Line
- Road as Completed Line
- Completed Burnout
- Planned Fire Line
- Planned Secondary Line
- Management Action Point
- Wildfire Daily Fire Perimeter

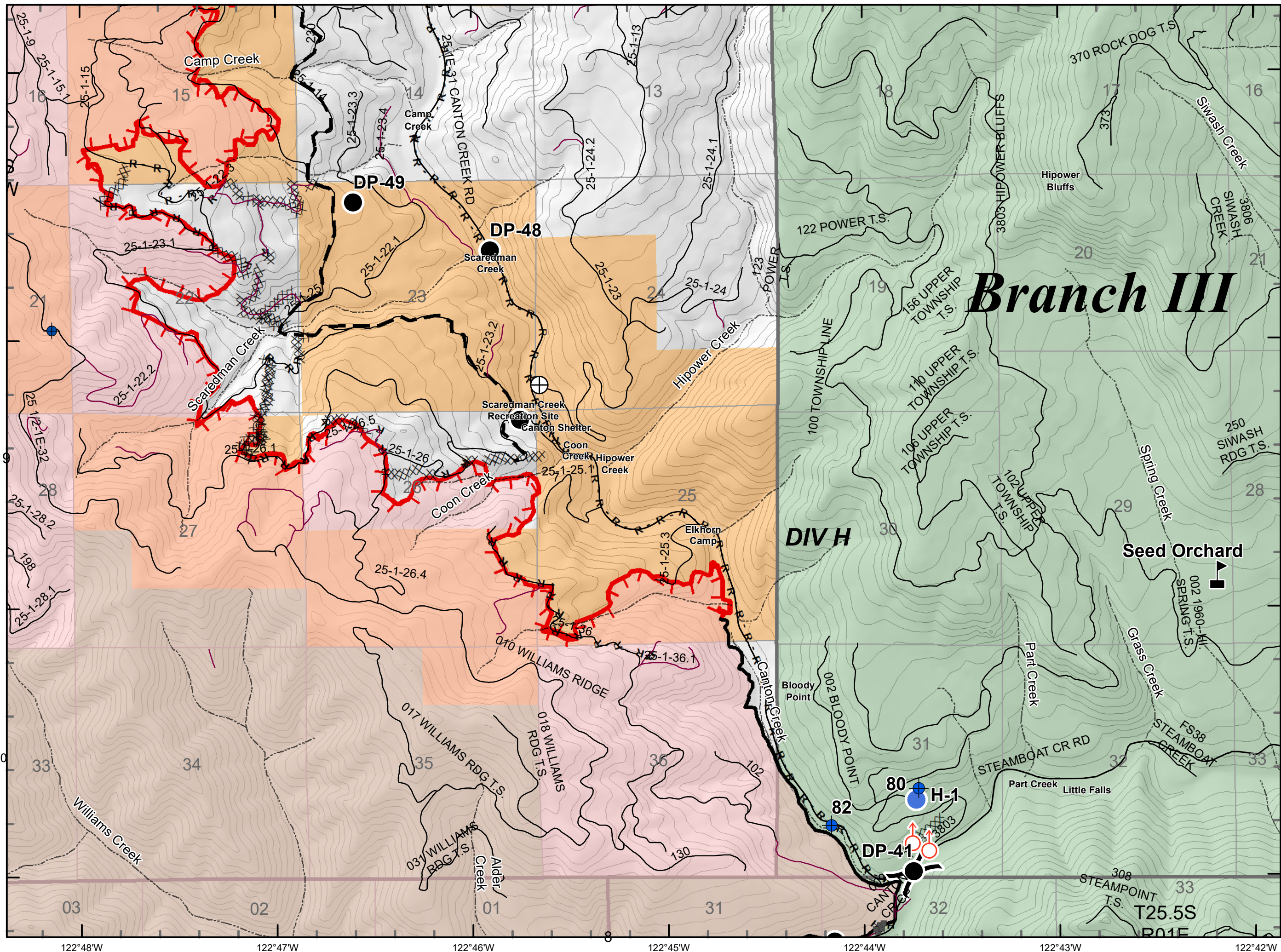


0 1,000 2,000 4,000

Feet



Index Map









# IAP Map

Archie Creek Fire

OR-UPF-000436

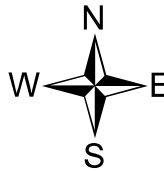
9/23/2020 0600 - 2000hrs

131,598 Acres

Map Page: 9

## Div N

- Residence
- Roads
- Streams
- Airstrip or Airport
- Camp
- Closure
- Dip Site
- Drop Point
- Fire Origin
- Helispot
- Mobile Weather Unit
- Repeater
- Safety Zone
- Spot Fire
- Staging Area
- Water Development or Draft Site
- Value at Risk
- Division Break
- Branch Break
- Uncontrolled Fire Edge
- Contained Line
- Completed Dozer Line
- Completed Hand Line
- Road as Completed Line
- Completed Burnout
- Planned Fire Line
- Planned Secondary Line
- Management Action Point
- Wildfire Daily Fire Perimeter

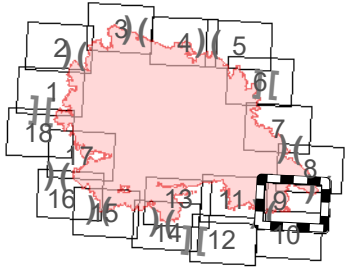


43°18'N

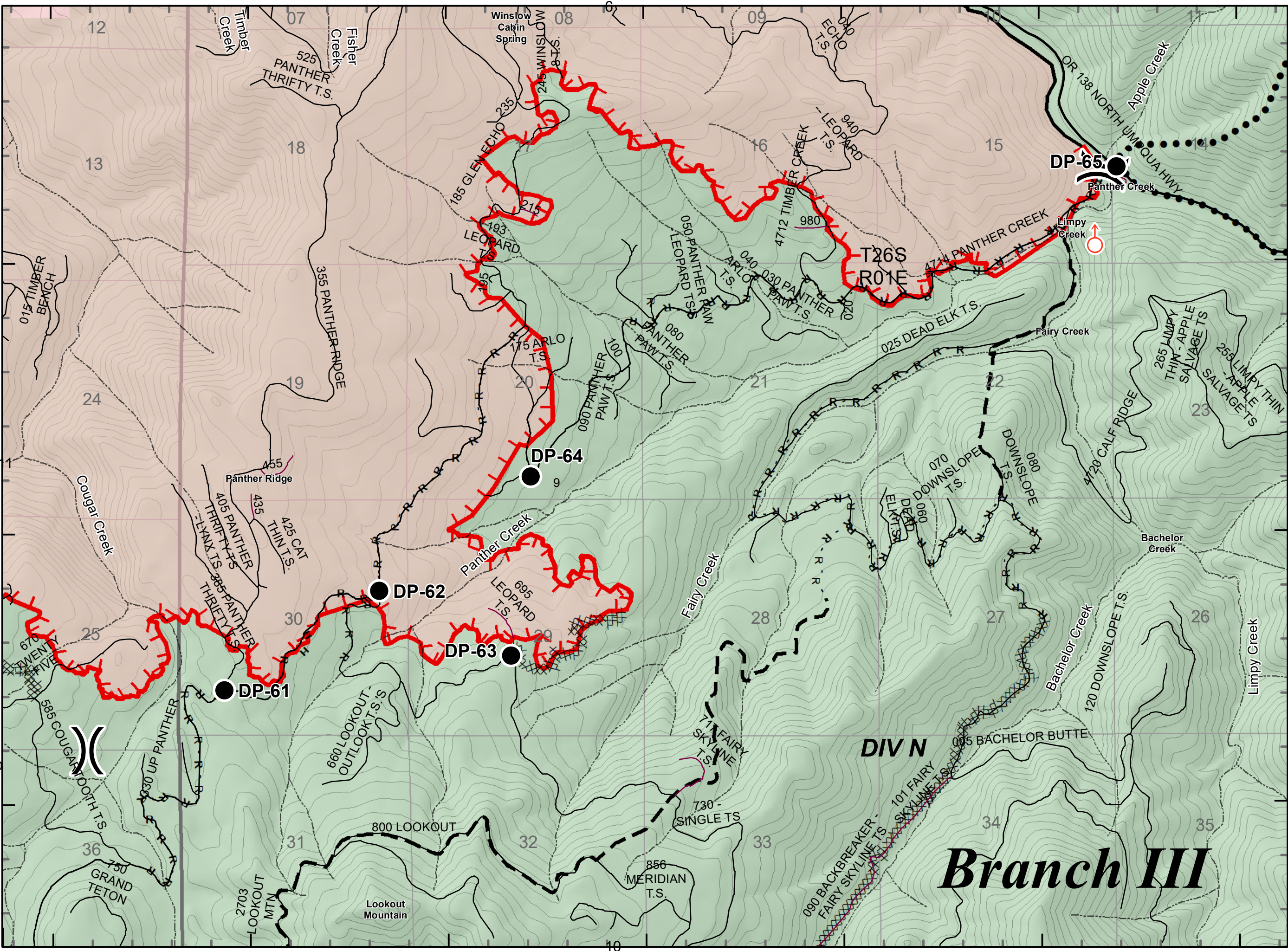
43°17'N

43°16'N

0 1,000 2,000 4,000 Feet



122°46'W 122°45'W 122°44'W 122°43'W 122°42'W 122°41'W 122°40'W



43°18'N

43°17'N

43°16'N

**DIV N**

# Branch III



# IAP Map

Archie Creek Fire

OR-UPF-000436

9/23/2020 0600 - 2000hrs

131,598 Acres

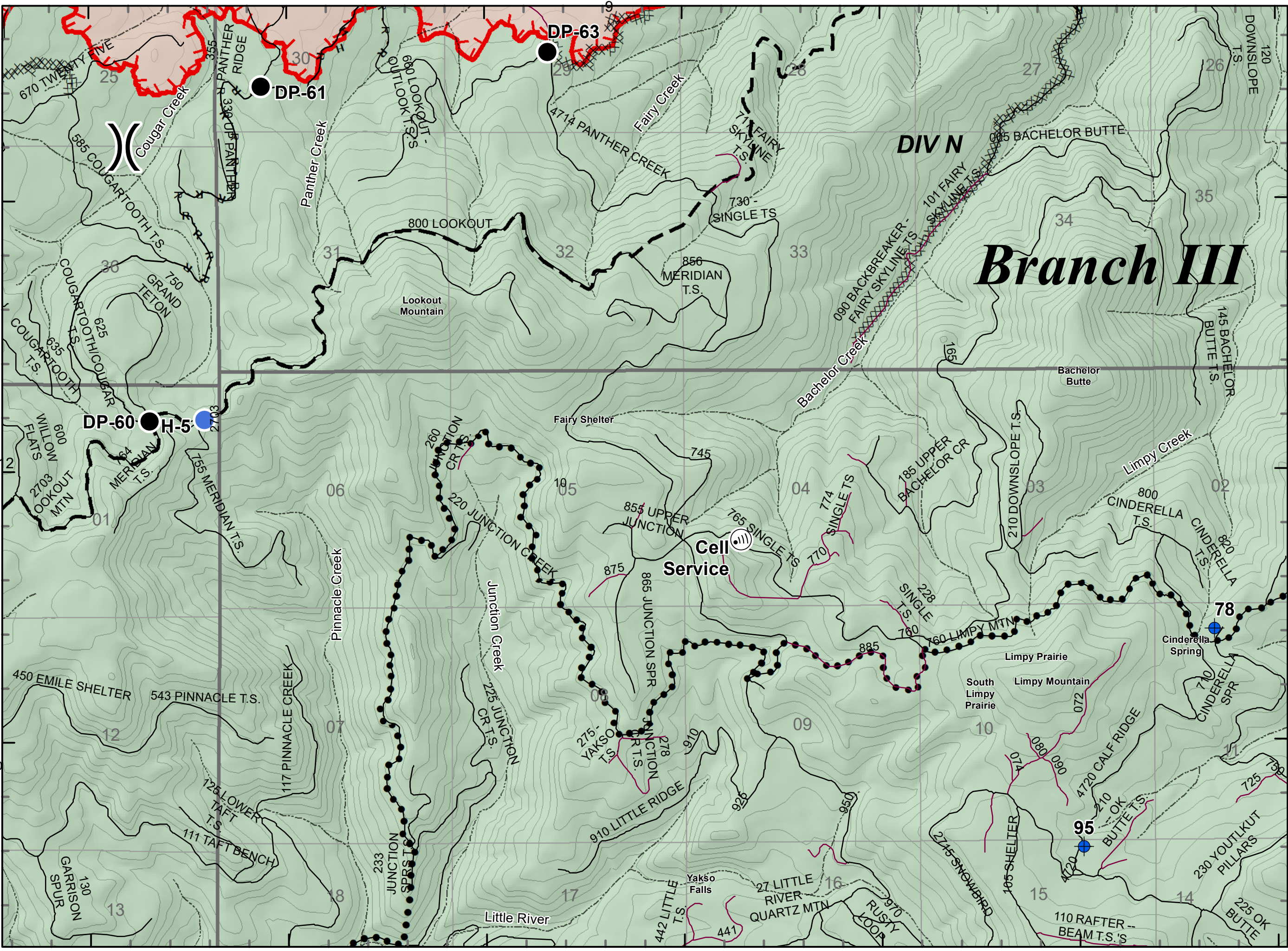
Map Page: 10

## Div N

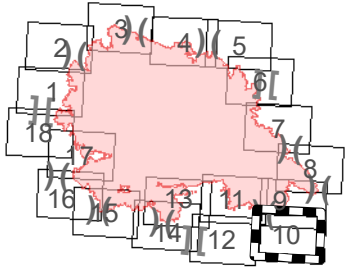
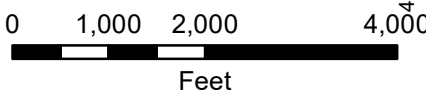
- Residence
- Roads
- Streams
- Airstrip or Airport
- Camp
- Closure
- Dip Site
- Drop Point
- Fire Origin
- Helispot
- Mobile Weather Unit
- Repeater
- Safety Zone
- Spot Fire
- Staging Area
- Water Development or Draft Site
- Value at Risk
- Division Break
- Branch Break
- Uncontrolled Fire Edge
- Contained Line
- Completed Dozer Line
- Completed Hand Line
- Road as Completed Line
- Completed Burnout
- Planned Fire Line
- Planned Secondary Line
- Management Action Point
- Wildfire Daily Fire Perimeter



43°16'N  
43°15'N  
43°14'N  
122°46'W  
122°45'W  
122°44'W  
122°43'W  
122°42'W  
122°41'W  
122°40'W



# Branch III



Index Map



# IAP Map

Archie Creek Fire

OR-UPF-000436

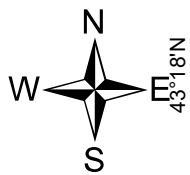
9/23/2020 0600 - 2000hrs

131,598 Acres

Map Page: 11

## Div Q

- Residence
- Roads
- Streams
- Airstrip or Airport
- Camp
- Closure
- Dip Site
- Drop Point
- Fire Origin
- Helispot
- Mobile Weather Unit
- Repeater
- Safety Zone
- Spot Fire
- Staging Area
- Water Development or Draft Site
- Value at Risk
- Division Break
- Branch Break
- Uncontrolled Fire Edge
- Contained Line
- Completed Dozer Line
- Completed Hand Line
- Road as Completed Line
- Completed Burnout
- Planned Fire Line
- Planned Secondary Line
- Management Action Point
- Wildfire Daily Fire Perimeter



43°18'N

43°17'N

43°16'N

122°52'W

122°51'W

122°50'W

122°49'W

122°48'W

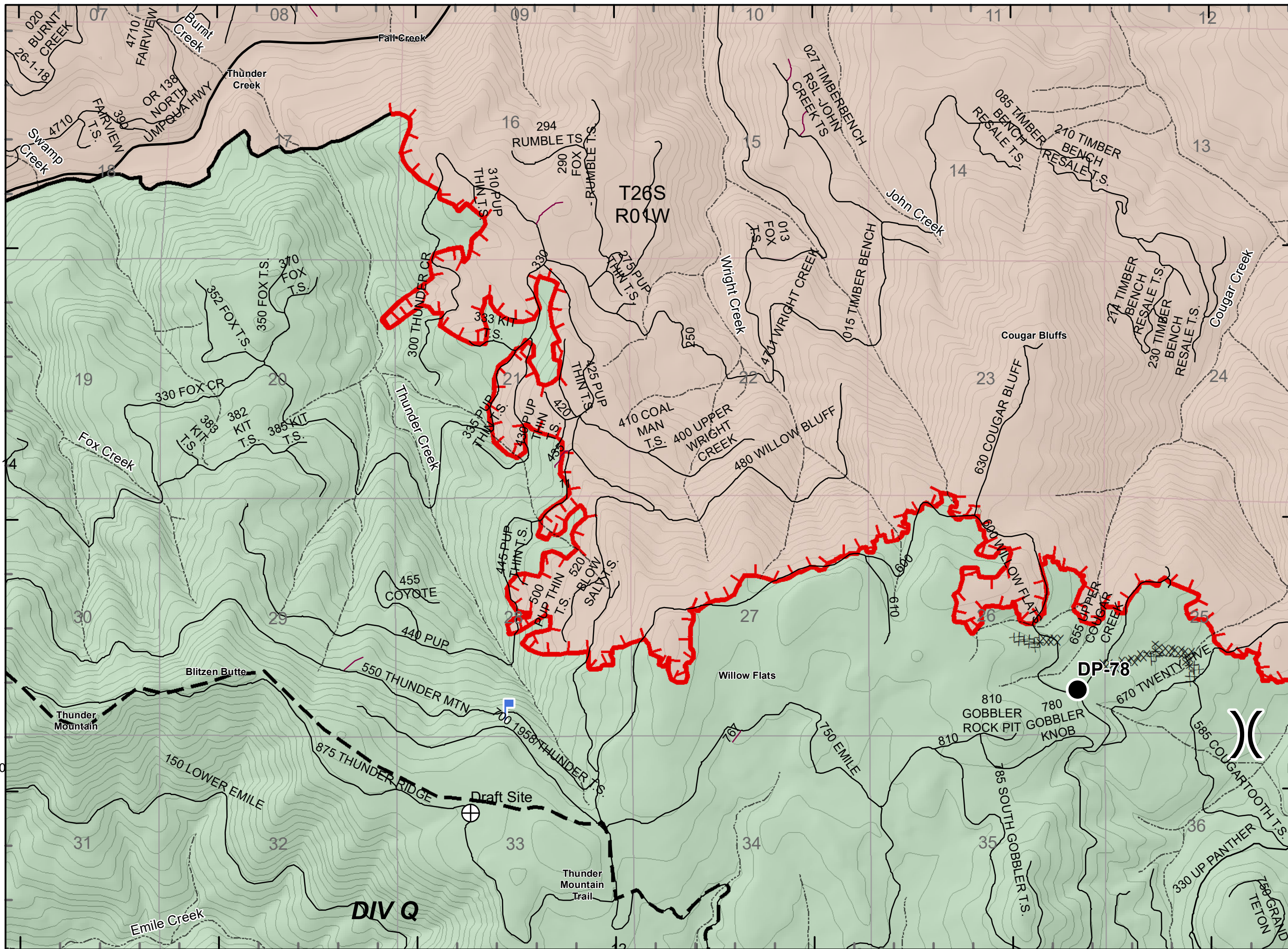
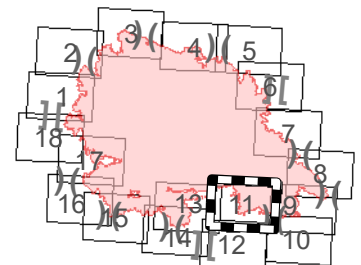
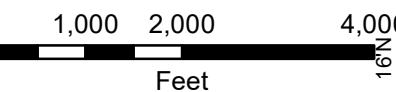
122°47'W

122°46'W

43°18'N

43°17'N

43°16'N



Index Map



# IAP Map

Archie Creek Fire

OR-UPF-000436

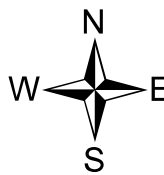
9/23/2020 0600 - 2000hrs

131,598 Acres

Map Page: 12

## Div Q

- Residence
- Roads
- Streams
- Airstrip or Airport
- Camp
- Closure
- Dip Site
- Drop Point
- Fire Origin
- Helispot
- Mobile Weather Unit
- Repeater
- Safety Zone
- Spot Fire
- Staging Area
- Water Development or Draft Site
- Value at Risk
- Division Break
- Branch Break
- Uncontrolled Fire Edge
- Contained Line
- Completed Dozer Line
- Completed Hand Line
- Road as Completed Line
- Completed Burnout
- Planned Fire Line
- Planned Secondary Line
- Management Action Point
- Wildfire Daily Fire Perimeter

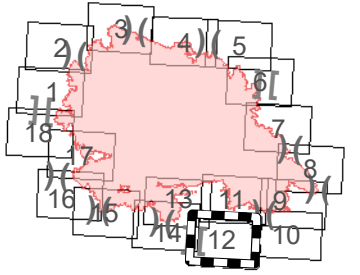


43°15'N

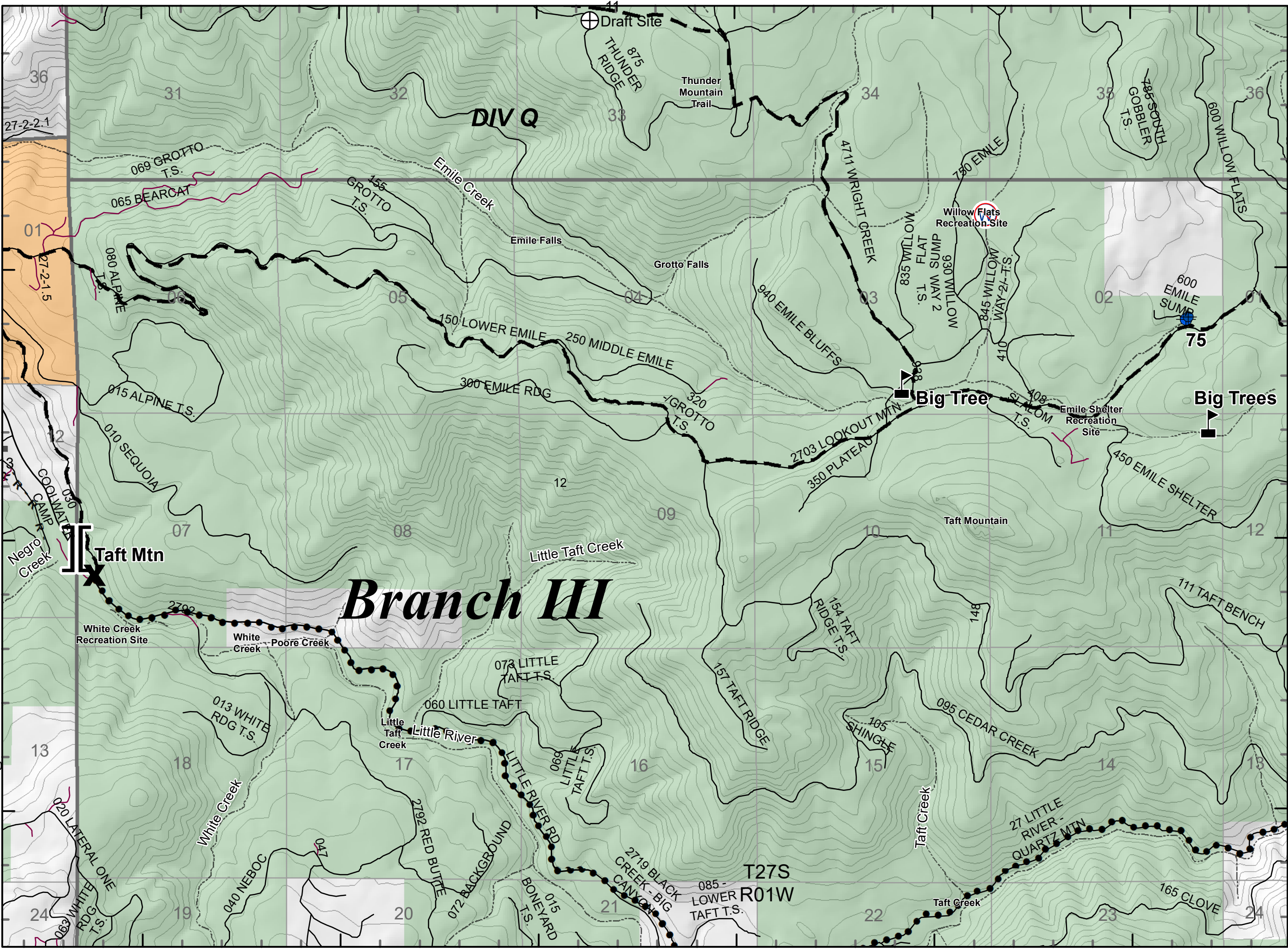
43°14'N

43°13'N

0 1,000 2,000 4,000  
Feet



Index Map



43°15'N

43°14'N

43°13'N

122°52'W

122°51'W

122°50'W

122°49'W

122°48'W

122°47'W

T27S

R01W



# IAP Map

Archie Creek Fire

OR-UPF-000436

9/23/2020 0600 - 2000hrs

131,598 Acres

Map Page: 13

## Div R, S

- Residence
- Roads
- Streams
- Airstrip or Airport
- Camp
- Closure
- Dip Site
- Drop Point
- Fire Origin
- Helispot
- Mobile Weather Unit
- Repeater
- Safety Zone
- Spot Fire
- Staging Area
- Water Development or Draft Site
- Value at Risk
- Division Break
- Branch Break
- Uncontrolled Fire Edge
- Contained Line
- Completed Dozer Line
- Completed Hand Line
- Road as Completed Line
- Completed Burnout
- Planned Fire Line
- Planned Secondary Line
- Management Action Point
- Wildfire Daily Fire Perimeter



43°18'N

43°17'N

43°16'N

43°15'N

122°57'W

122°56'W

122°55'W

122°54'W

122°53'W

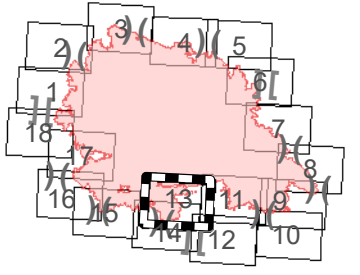
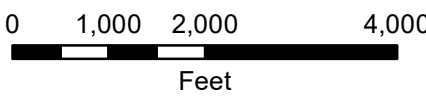
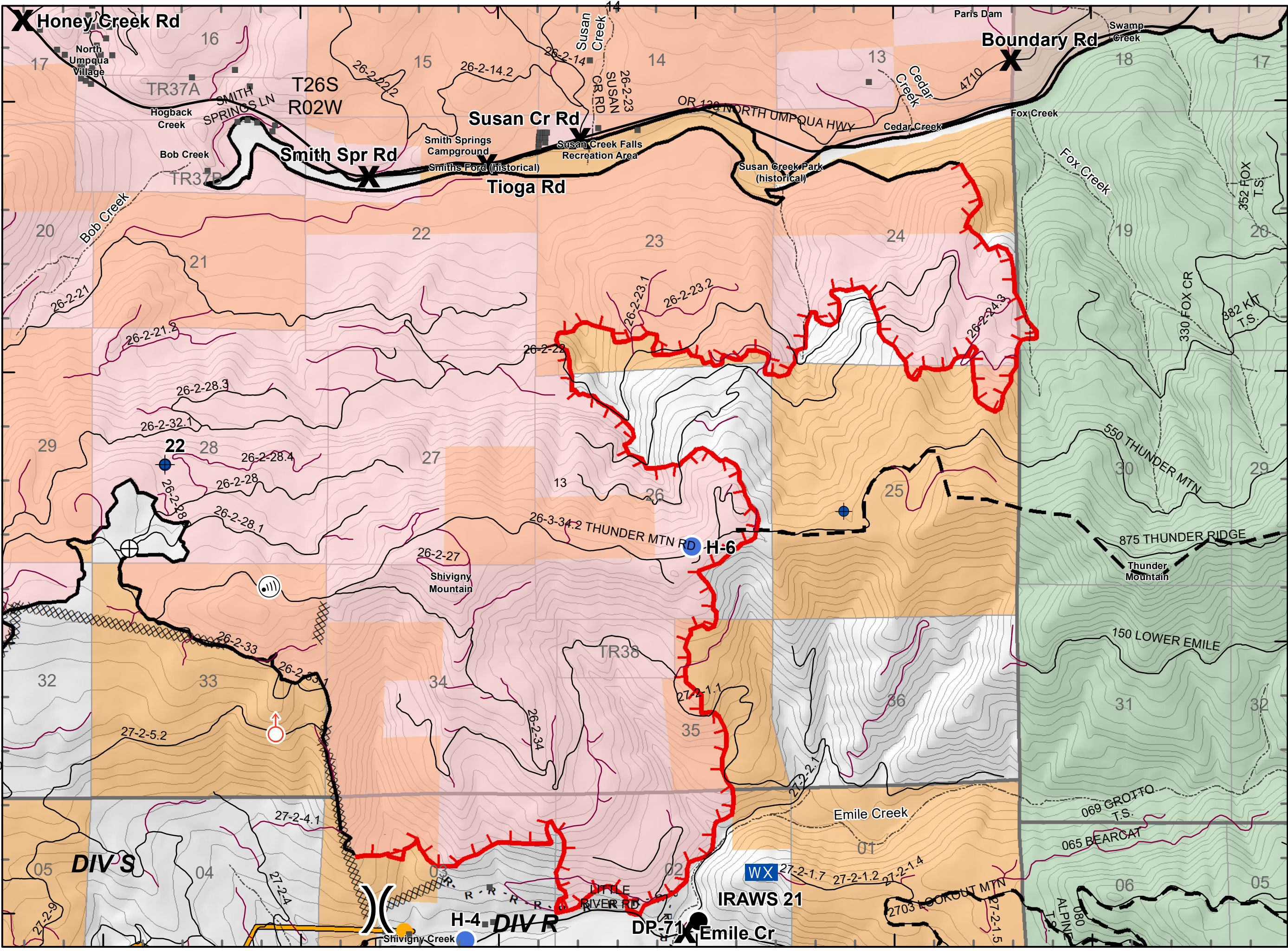
122°52'W

43°18'N

43°17'N

43°16'N

43°15'N



Index Map



# IAP Map

Archie Creek Fire  
OR-UPF-000436

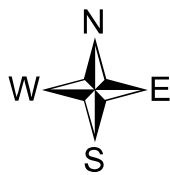
9/23/2020 0600 - 2000hrs

131,598 Acres

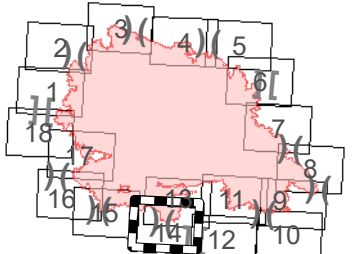
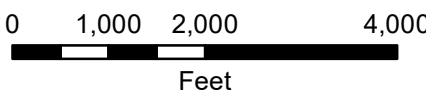
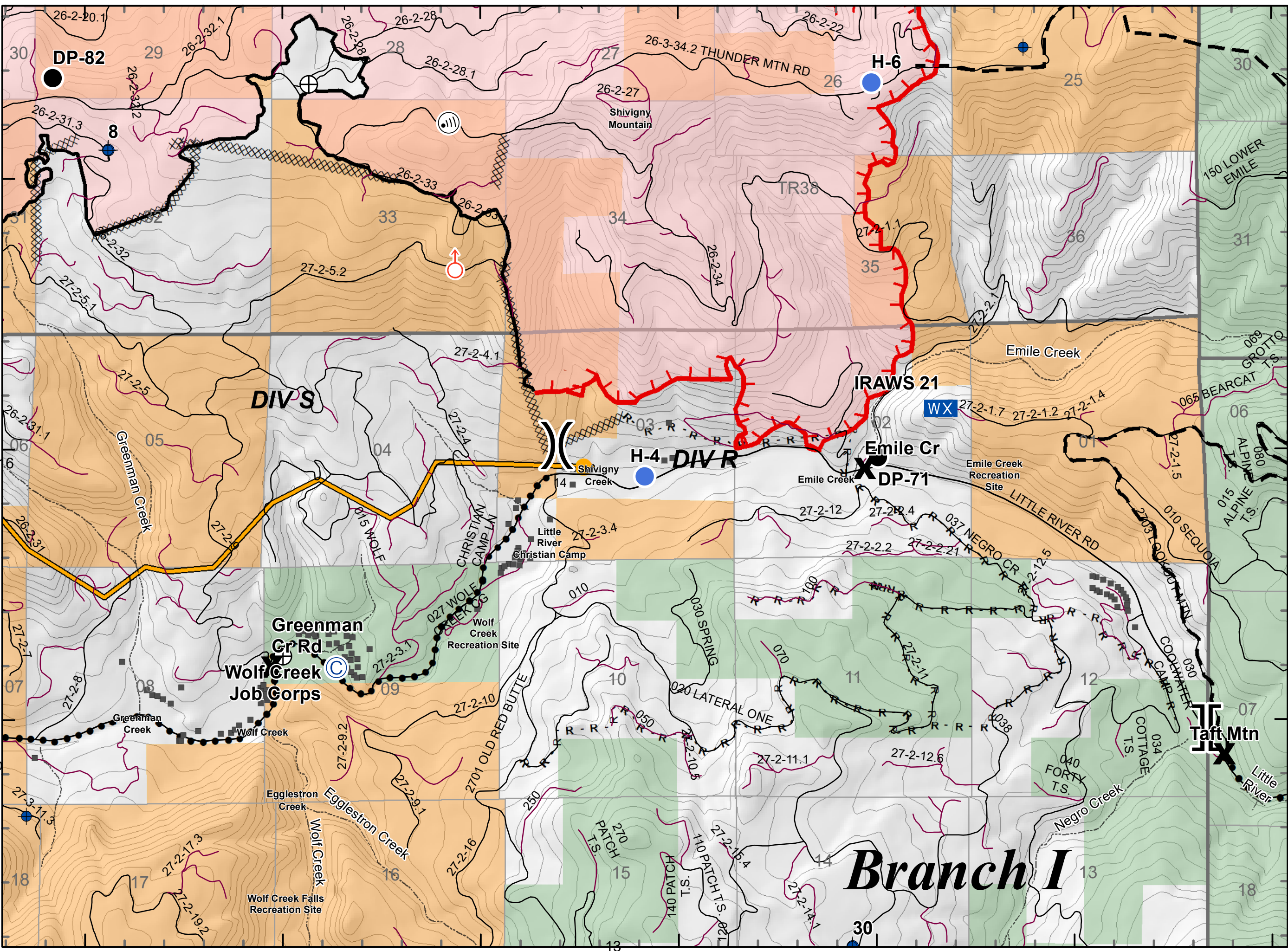
Map Page: 14

## Div R, S

- Residence
- Roads
- Streams
- Airstrip or Airport
- Camp
- Closure
- Dip Site
- Drop Point
- Fire Origin
- Helispot
- Mobile Weather Unit
- Repeater
- Safety Zone
- Spot Fire
- Staging Area
- Water Development or Draft Site
- Value at Risk
- Division Break
- Branch Break
- Uncontrolled Fire Edge
- Contained Line
- Completed Dozer Line
- Completed Hand Line
- Road as Completed Line
- Completed Burnout
- Planned Fire Line
- Planned Secondary Line
- Management Action Point
- Wildfire Daily Fire Perimeter



43°16'N  
43°15'N  
43°14'N  
43°13'N



Index Map

122°58'W 122°57'W 122°56'W 122°55'W 122°54'W 122°53'W 122°52'W



# IAP Map

Archie Creek Fire

OR-UPF-000436

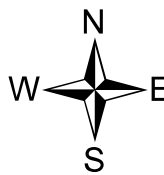
9/23/2020 0600 - 2000hrs

131,598 Acres

Map Page: 15

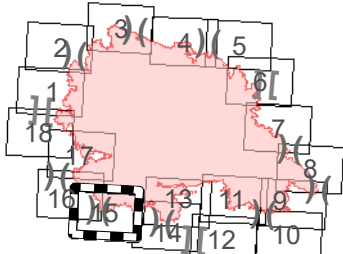
## Div S, T

- Residence
- Roads
- Streams
- Airstrip or Airport
- Camp
- Closure
- Dip Site
- Drop Point
- Fire Origin
- Helispot
- Mobile Weather Unit
- Repeater
- Safety Zone
- Spot Fire
- Staging Area
- Water Development or Draft Site
- Value at Risk
- Division Break
- Branch Break
- Uncontrolled Fire Edge
- Contained Line
- Completed Dozer Line
- Completed Hand Line
- Road as Completed Line
- Completed Burnout
- Planned Fire Line
- Planned Secondary Line
- Management Action Point
- Wildfire Daily Fire Perimeter

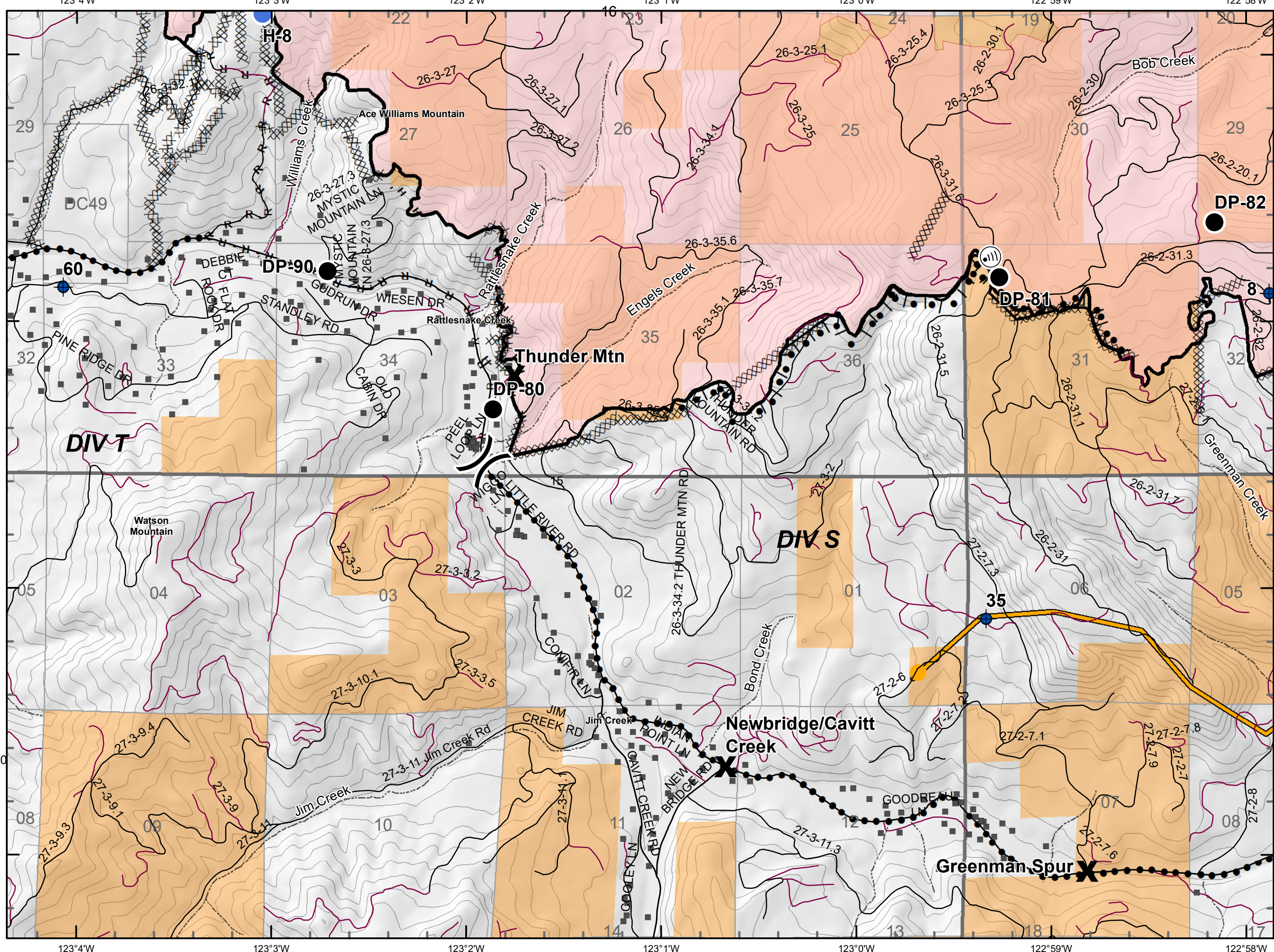


0 1,000 2,000 4,000

Feet



Index Map





# IAP Map

Archie Creek Fire  
OR-UPF-000436

9/23/2020 0600 - 2000hrs

131,598 Acres

Map Page: 16

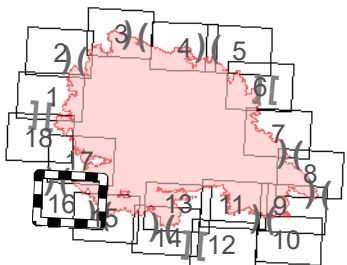
## Div T

- Residence
- Roads
- Streams
- Airstrip or Airport
- Camp
- Closure
- Dip Site
- Drop Point
- Fire Origin
- Helispot
- Mobile Weather Unit
- Repeater
- Safety Zone
- Spot Fire
- Staging Area
- Water Development or Draft Site
- Value at Risk
- Division Break
- Branch Break
- Uncontrolled Fire Edge
- Contained Line
- Completed Dozer Line
- Completed Hand Line
- Road as Completed Line
- Completed Burnout
- Planned Fire Line
- Planned Secondary Line
- Management Action Point
- Wildfire Daily Fire Perimeter

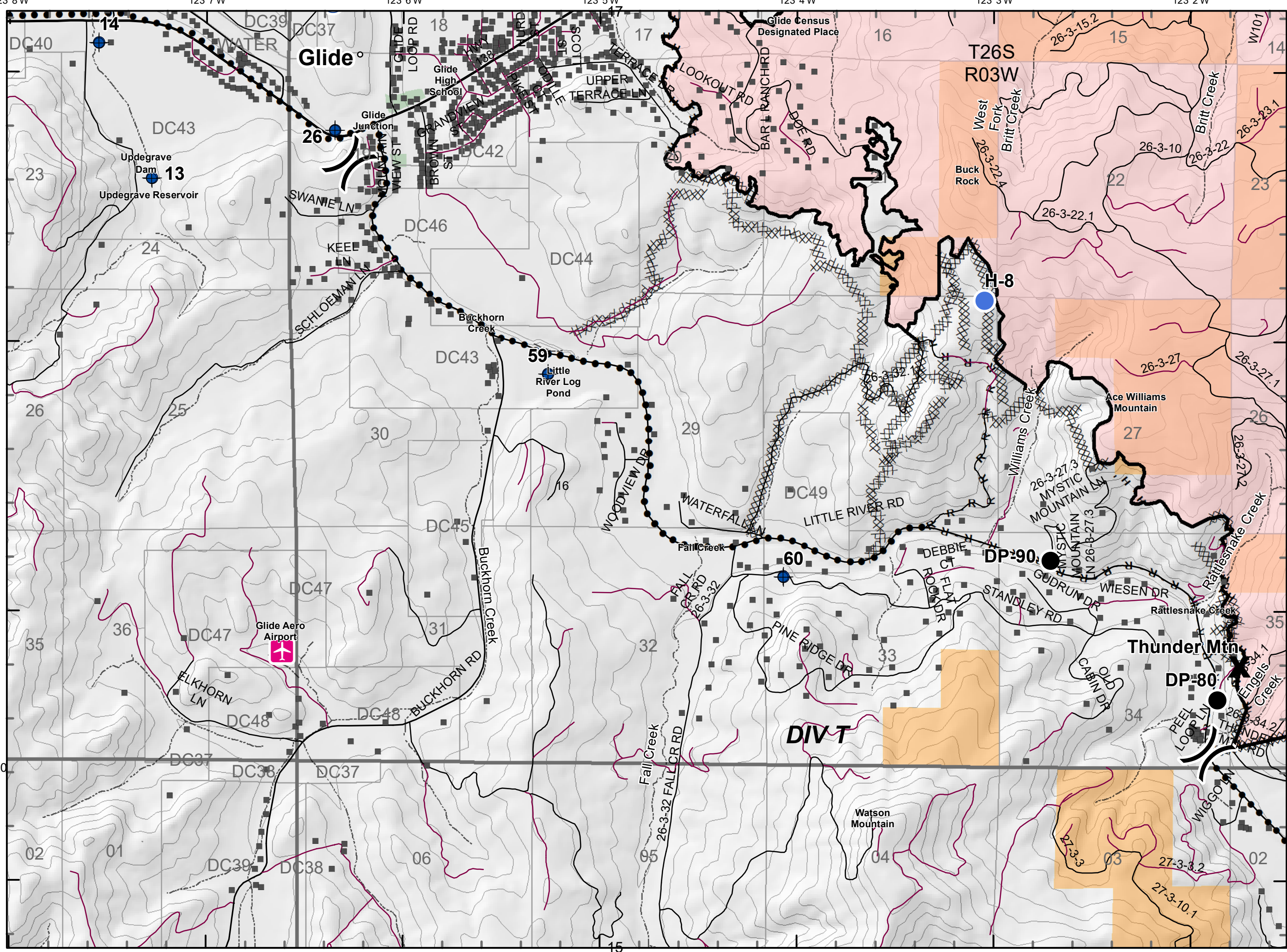


0 1,000 2,000 4,000

Feet



Index Map



**DIV T**



# IAP Map

Archie Creek Fire

OR-UPF-000436

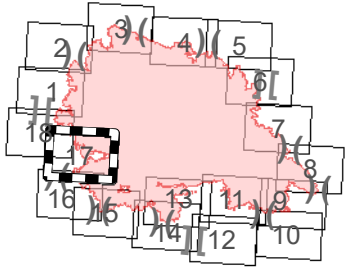
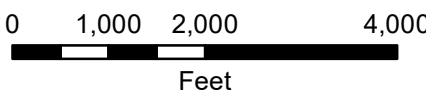
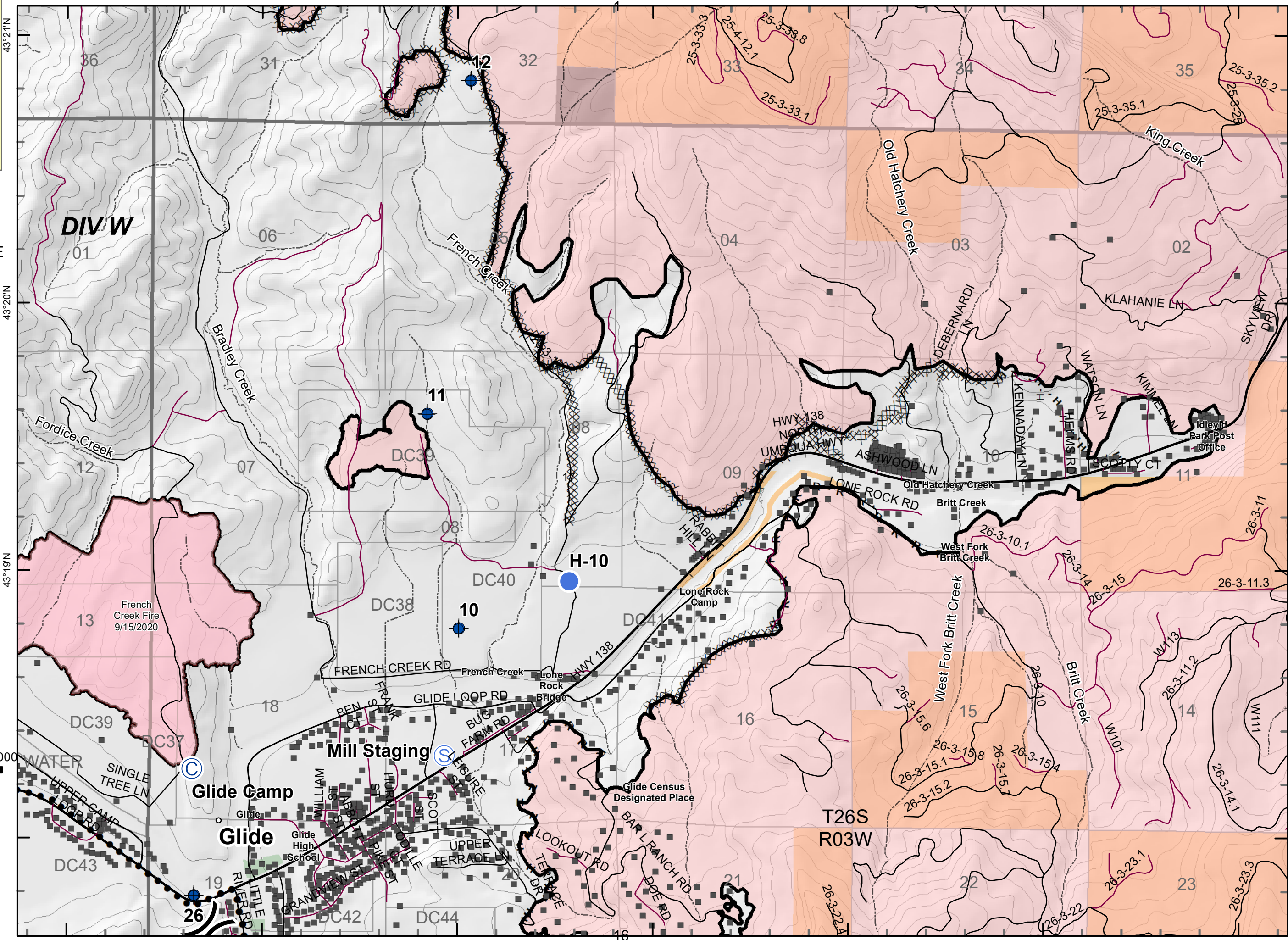
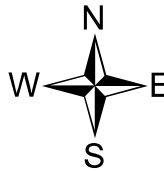
9/23/2020 0600 - 2000hrs

131,598 Acres

Map Page: 17

## Div W

- Residence
- Roads
- Streams
- Airstrip or Airport
- Camp
- Closure
- Dip Site
- Drop Point
- Fire Origin
- Helispot
- Mobile Weather Unit
- Repeater
- Safety Zone
- Spot Fire
- Staging Area
- Water Development or Draft Site
- Value at Risk
- Division Break
- Branch Break
- Uncontrolled Fire Edge
- Contained Line
- Completed Dozer Line
- Completed Hand Line
- Road as Completed Line
- Completed Burnout
- Planned Fire Line
- Planned Secondary Line
- Management Action Point
- Wildfire Daily Fire Perimeter



Index Map



# IAP Map

Archie Creek Fire

OR-UPF-000436

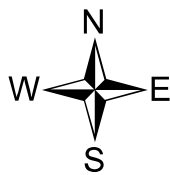
9/23/2020 0600 - 2000hrs

131,598 Acres

Map Page: 18

## Div W

- Residence
- Roads
- Streams
- Airstrip or Airport
- Camp
- Closure
- Dip Site
- Drop Point
- Fire Origin
- Helispot
- Mobile Weather Unit
- Repeater
- Safety Zone
- Spot Fire
- Staging Area
- Water Development or Draft Site
- Value at Risk
- Division Break
- Branch Break
- Uncontrolled Fire Edge
- Contained Line
- Completed Dozer Line
- Completed Hand Line
- Road as Completed Line
- Completed Burnout
- Planned Fire Line
- Planned Secondary Line
- Management Action Point
- Wildfire Daily Fire Perimeter



43°22'N

43°21'N

43°20'N

123°11'W

123°10'W

123°9'W

123°8'W

123°7'W

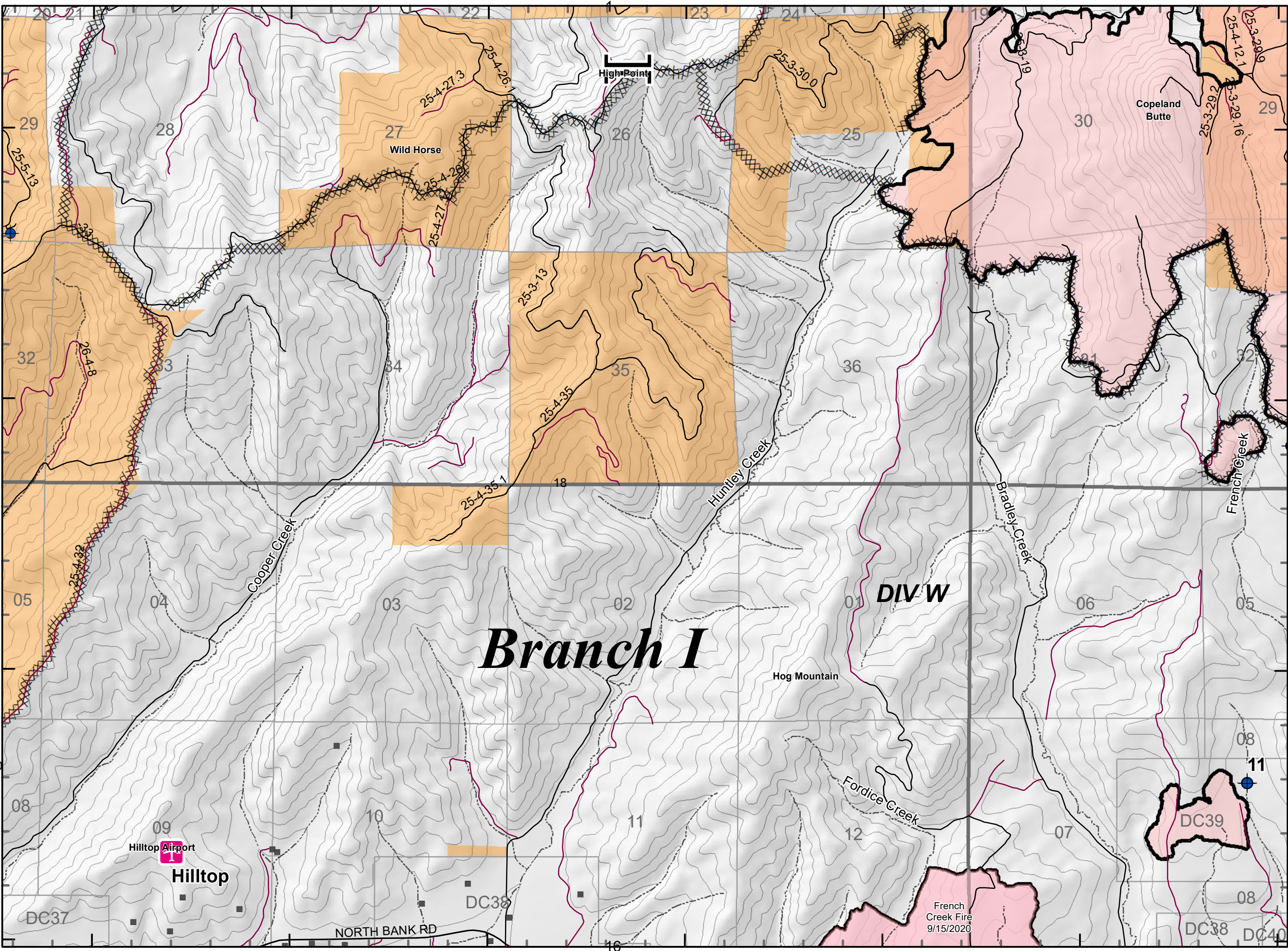
123°6'W

123°5'W

43°22'N

43°21'N

43°20'N



# Branch I

## DIV W

Hilltop Airport  
**Hilltop**

Wild Horse

High Point

Copeland Butte

Hog Mountain

DC39

French Creek Fire  
9/15/2020

DC37

DC38

DC38

DC40

NORTH BANK RD

123°11'W

123°10'W

123°9'W

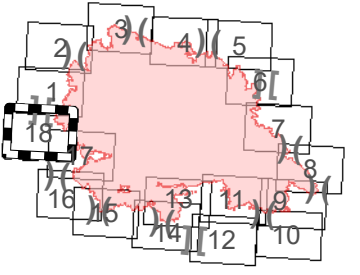
123°8'W

123°7'W

123°6'W

123°5'W

Index Map





Archie Creek Fire  
OR-UPF-000346  
09/23/2020



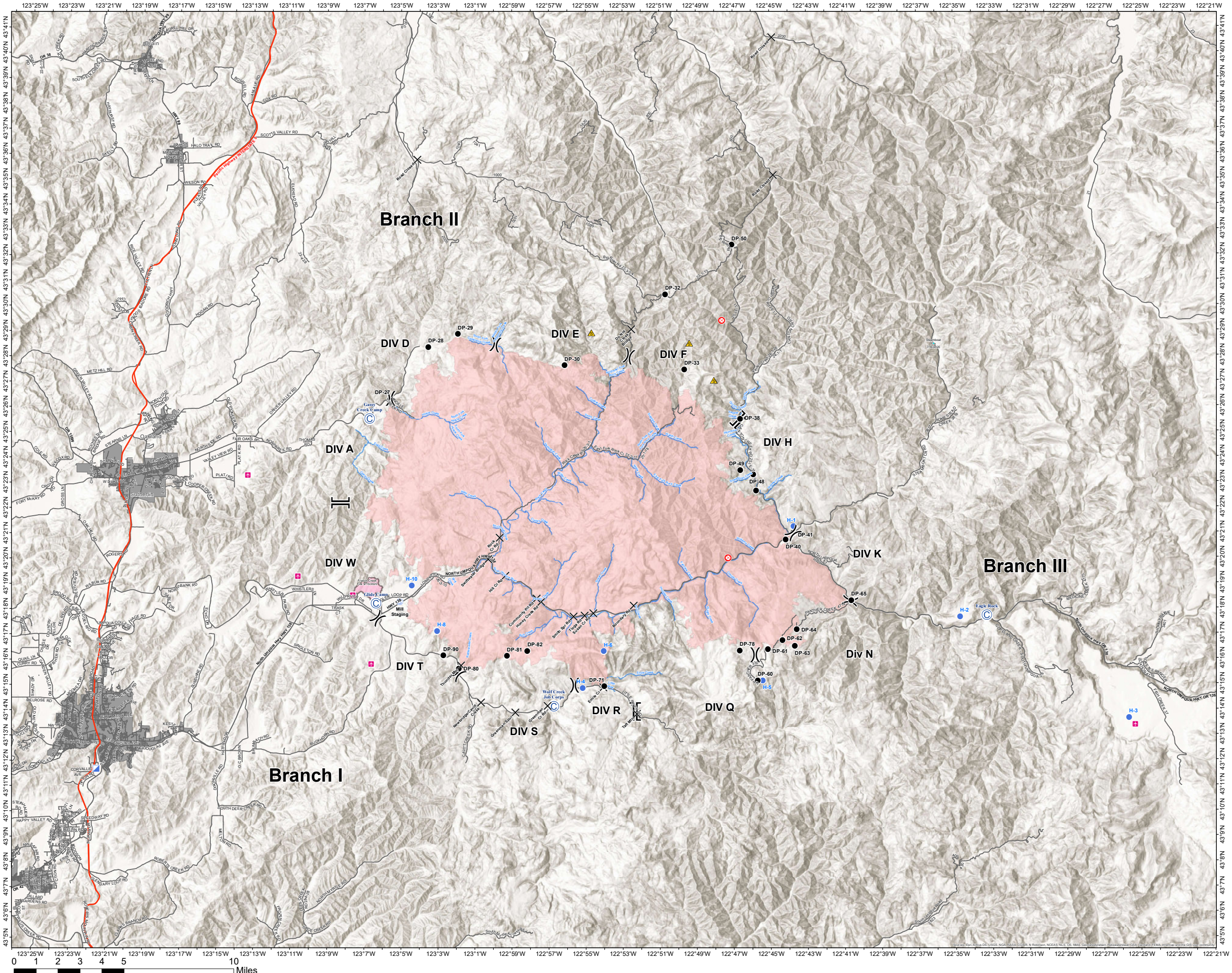
# Transportation Map

131,598 Acres

- Airstrip or Airport
- Camp
- Closure
- Drop Point
- Fire Origin
- Helispot
- Incident Command Post
- Safety Zone
- Staging Area
- Division Break
- Branch Break
- Small Cities & Towns
- Interstate
- Intermediate
- Paved
- Cities & Towns
- Other Fires
- Streams
- Wildfire Daily Fire Perimeter



9/22/2020 @ 2007  
NAD 1983 UTM Zone 10N  
SA Red Team GIS  
Latest Intel:  
20200921 @ 2003



0 1 2 3 4 5 10 Miles