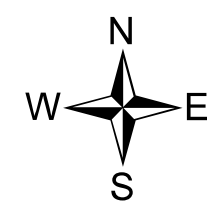


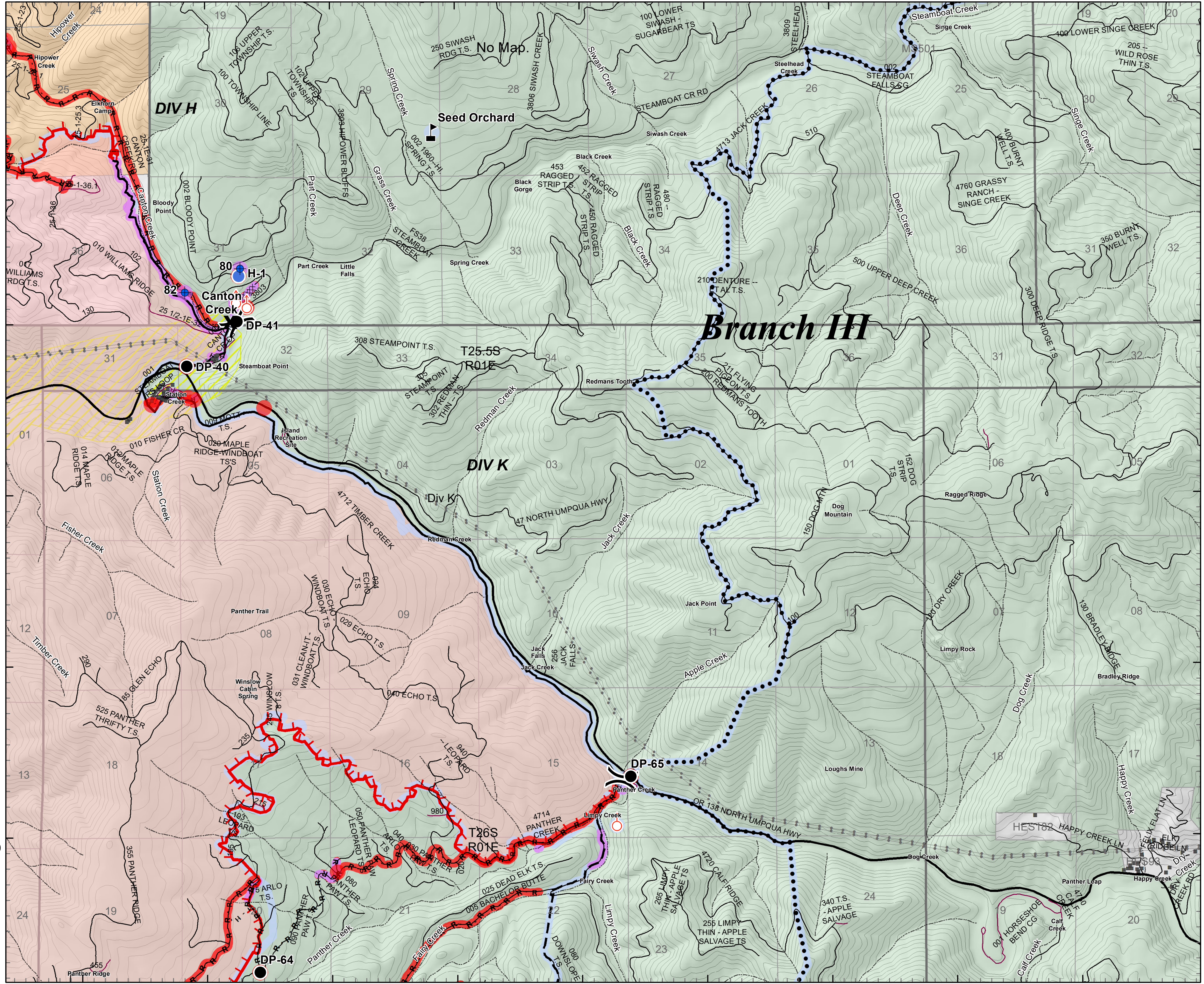
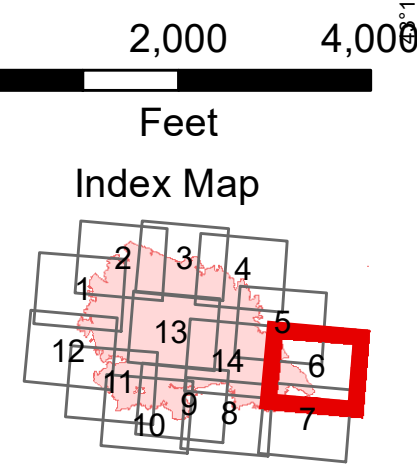
**Suppression Repair**  
**Archie Creek Fire**  
**OR-UPF-000436**  
**9/26/2020**

**131,642 Acres**  
**Map Page: 6**  
**Div K**



- Repair Needed
- No Repair Needed
- Unknown
- X** Closure
- Dip Site
- Drop Point
- Helispot
- Spot Fire
- ▲ Value at Risk
- ( )** Division Break

- PP&L Transmission Lines
- Repair Needed
- No Repair Needed
- Unknown
- Uncontrolled Fire Edge
- Contained Line
- XXXX** Completed Dozer Line
- H** Completed Hand Line
- R** Road as Completed Line
- Planned Fire Line
- Planned Secondary Line
- PP&L Transmission Lines
- Other
- Intermediate
- Paved
- All Weather/Dirt
- Streams
- BLM
- USFS



122°45'W 122°44'W 122°43'W 122°42'W 122°41'W 122°40'W 122°39'W 122°38'W 122°37'W