

IAP Map

Archie Creek Fire
OR-UPF-000436

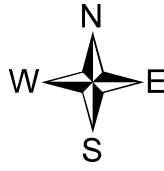
9/26/2020 0600 - 2000hrs

131,642 Acres

Map Page: 1

Div A

- Residence
- Roads
- Streams
- Airstrip or Airport
- Camp
- Closure
- Dip Site
- Drop Point
- Fire Origin
- Helispot
- Mobile Weather Unit
- Repeater
- Safety Zone
- Spot Fire
- Staging Area
- Water Development or Draft Site
- Value at Risk
- Division Break
- Branch Break
- Uncontrolled Fire Edge
- Contained Line
- Completed Dozer Line
- Completed Hand Line
- Road as Completed Line
- Completed Burnout
- Planned Fire Line
- Planned Secondary Line
- Management Action Point
- Wildfire Daily Fire Perimeter



43°25'N

43°24'N

43°23'N

43°22'N

123°10'W

123°9'W

123°8'W

123°7'W

123°6'W

123°5'W

123°10'W

123°9'W

123°8'W

123°7'W

123°6'W

123°5'W

43°25'N

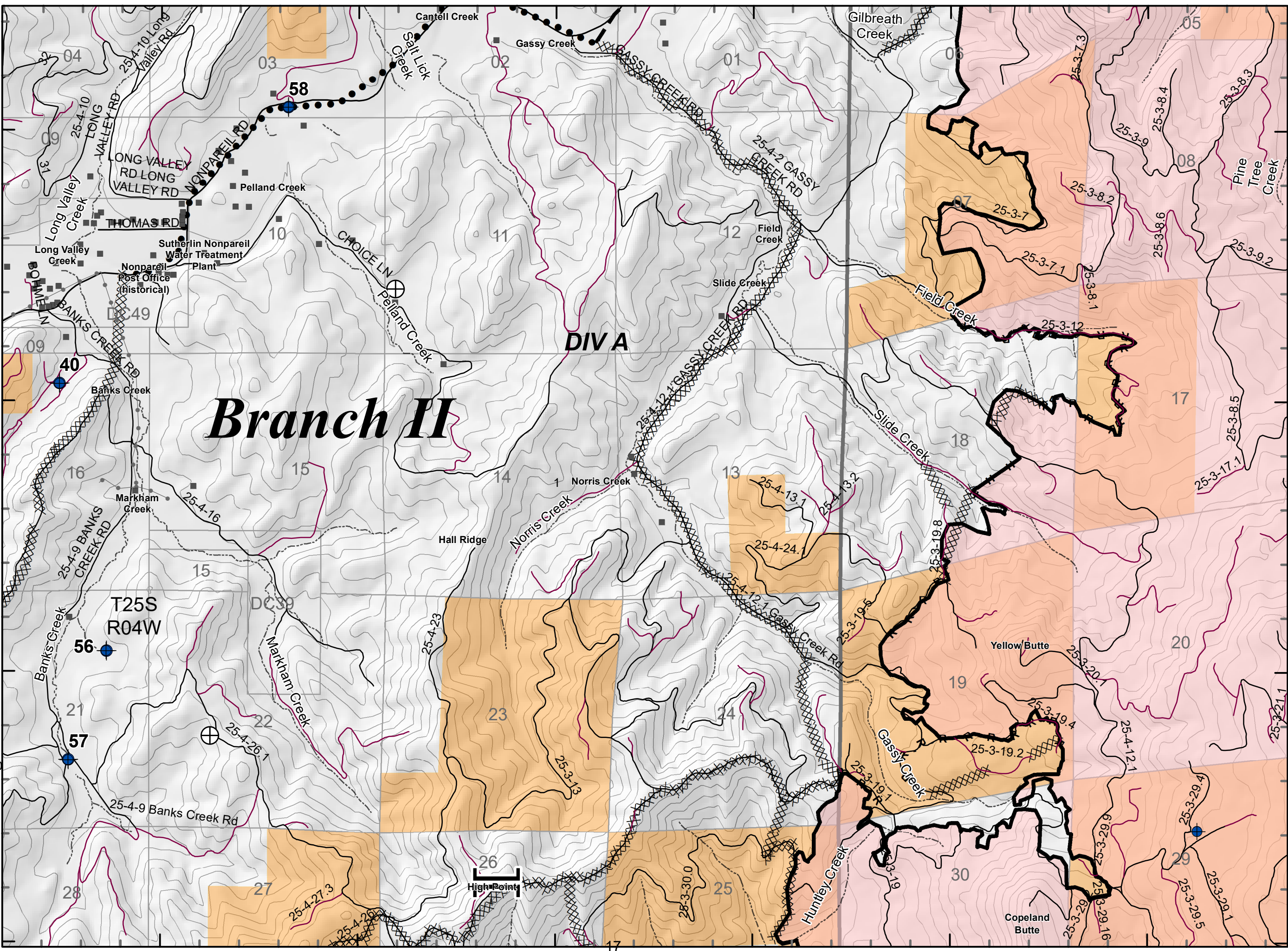
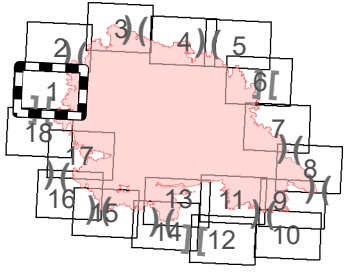
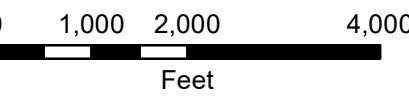
43°24'N

43°23'N

43°22'N

Branch II

DIV A

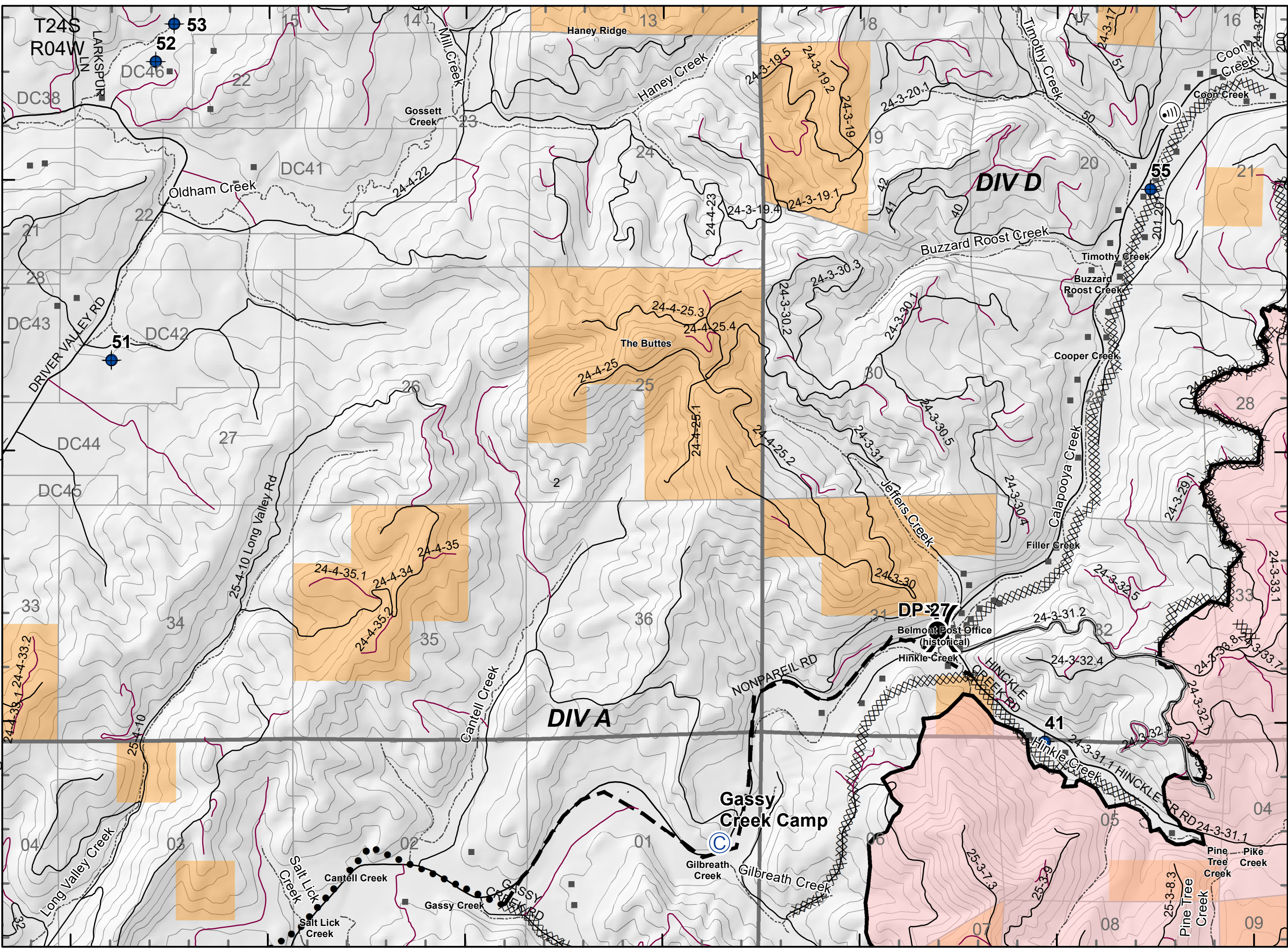
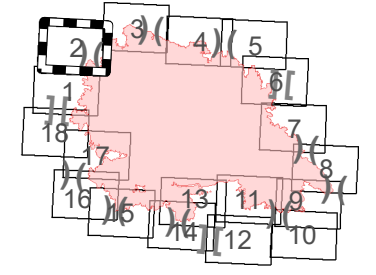
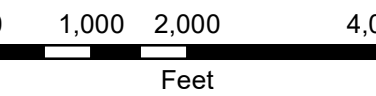
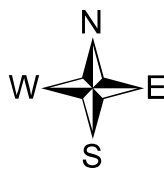


Index Map

IAP Map

Archie Creek Fire
OR-UPF-000436
9/26/2020 0600 - 2000hrs
131,642 Acres
Map Page: 2
Div A, D

- Residence
- Roads
- Streams
- Airstrip or Airport
- Camp
- Closure
- Dip Site
- Drop Point
- Fire Origin
- Helispot
- Mobile Weather Unit
- Repeater
- Safety Zone
- Spot Fire
- Staging Area
- Water Development or Draft Site
- Value at Risk
- Division Break
- Branch Break
- Uncontrolled Fire Edge
- Contained Line
- Completed Dozer Line
- Completed Hand Line
- Road as Completed Line
- Completed Burnout
- Planned Fire Line
- Planned Secondary Line
- Management Action Point
- Wildfire Daily Fire Perimeter



IAP Map

Archie Creek Fire

OR-UPF-000436

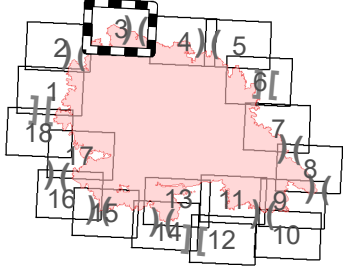
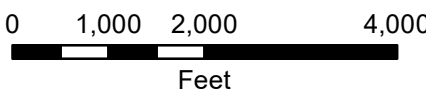
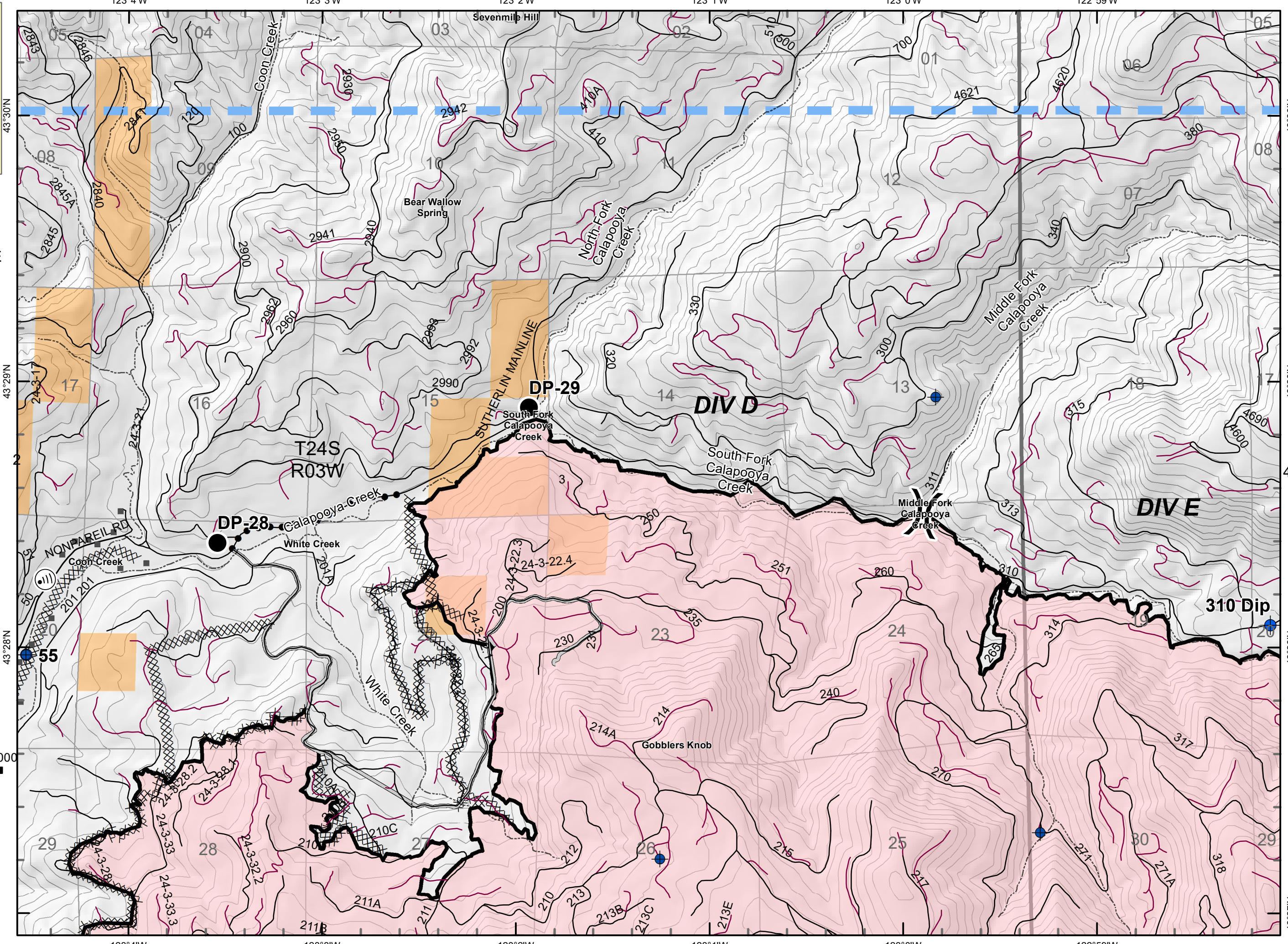
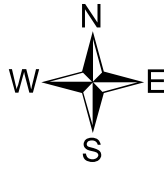
9/26/2020 0600 - 2000hrs

131,642 Acres

Map Page: 3

Div D, E

- Residence
- Roads
- Streams
- Airstrip or Airport
- Camp
- Closure
- Dip Site
- Drop Point
- Fire Origin
- Helispot
- Mobile Weather Unit
- Repeater
- Safety Zone
- Spot Fire
- Staging Area
- Water Development or Draft Site
- Value at Risk
- Division Break
- Branch Break
- Uncontrolled Fire Edge
- Contained Line
- Completed Dozer Line
- Completed Hand Line
- Road as Completed Line
- Completed Burnout
- Planned Fire Line
- Planned Secondary Line
- Management Action Point
- Wildfire Daily Fire Perimeter



Index Map

IAP Map

Archie Creek Fire

OR-UPF-000436

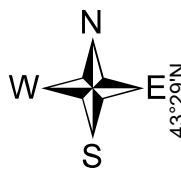
9/26/2020 0600 - 2000hrs

131,642 Acres

Map Page: 5

Div F

- Residence
- Roads
- Streams
- Airstrip or Airport
- Camp
- Closure
- Dip Site
- Drop Point
- Fire Origin
- Helispot
- Mobile Weather Unit
- Repeater
- Safety Zone
- Spot Fire
- Staging Area
- Water Development or Draft Site
- Value at Risk
- Division Break
- Branch Break
- Uncontrolled Fire Edge
- Contained Line
- Completed Dozer Line
- Completed Hand Line
- Road as Completed Line
- Completed Burnout
- Planned Fire Line
- Planned Secondary Line
- Management Action Point
- Wildfire Daily Fire Perimeter



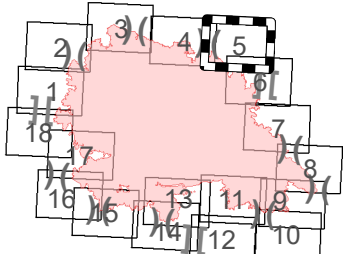
43°29'N

43°28'N

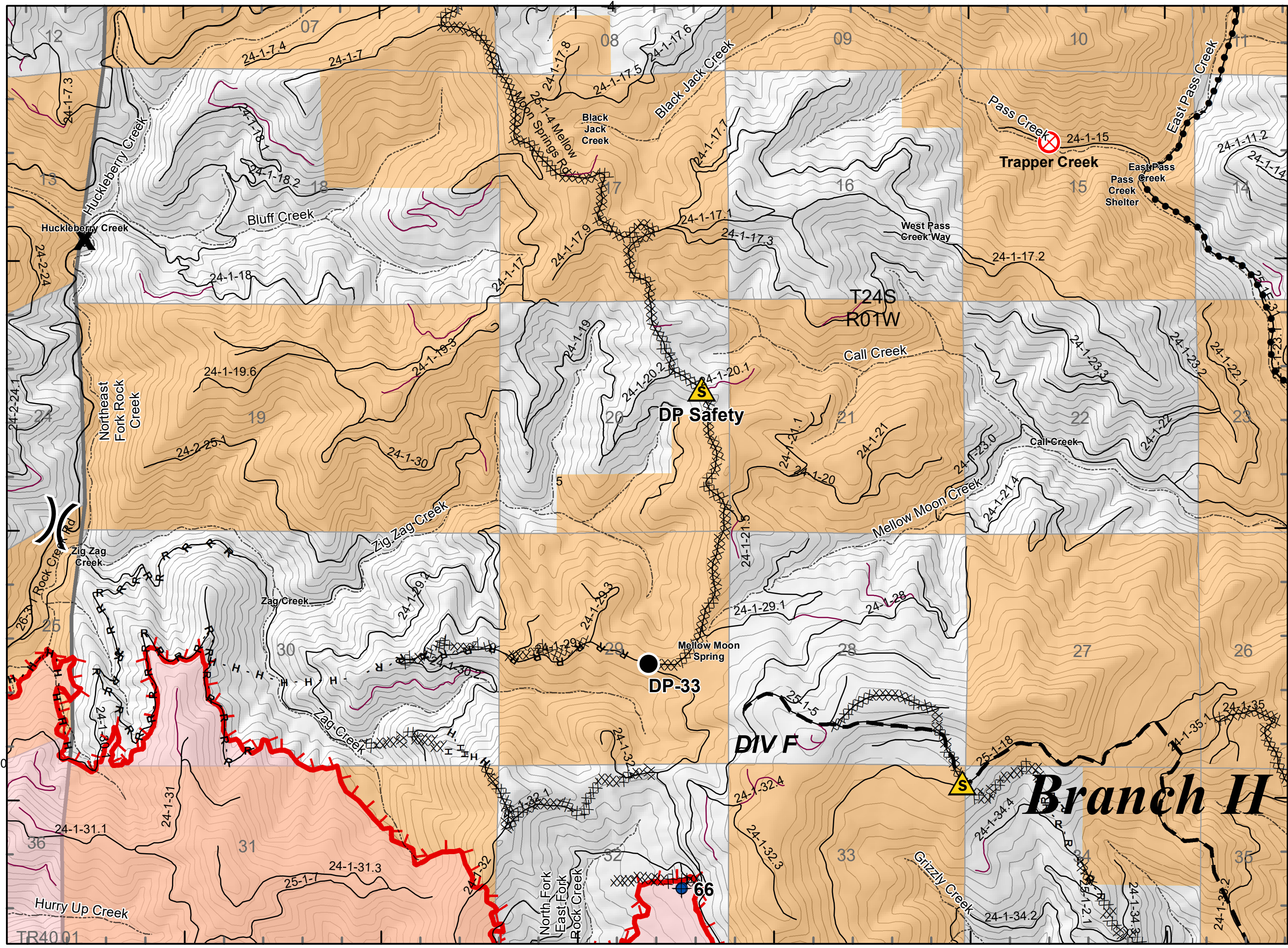
43°27'N

0 1,000 2,000 4,000

Feet



Index Map



43°29'N

43°28'N

43°27'N

122°52'W

122°51'W

122°50'W

122°49'W

122°48'W

122°47'W

IAP Map

Archie Creek Fire

OR-UPF-000436

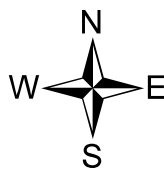
9/26/2020 0600 - 2000hrs

131,642 Acres

Map Page: 6

Div F, H

- Residence
- Roads
- Streams
- Airstrip or Airport
- Camp
- Closure
- Dip Site
- Drop Point
- Fire Origin
- Helispot
- Mobile Weather Unit
- Repeater
- Safety Zone
- Spot Fire
- Staging Area
- Water Development or Draft Site
- Value at Risk
- Division Break
- Branch Break
- Uncontrolled Fire Edge
- Contained Line
- Completed Dozer Line
- Completed Hand Line
- Road as Completed Line
- Completed Burnout
- Planned Fire Line
- Planned Secondary Line
- Management Action Point
- Wildfire Daily Fire Perimeter

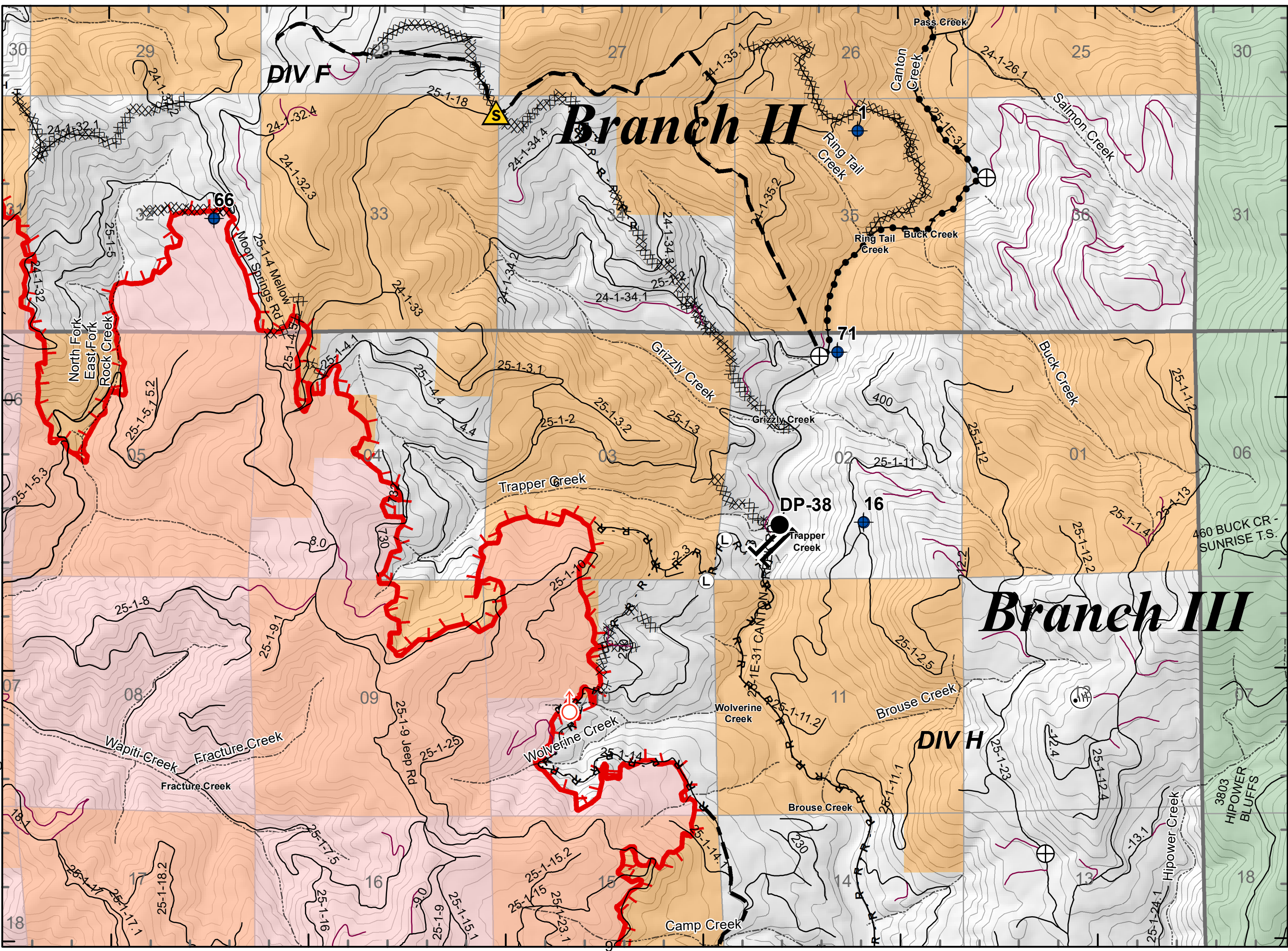


43°27'N

43°26'N

43°25'N

43°24'N



43°27'N

43°26'N

43°25'N

43°24'N

122°50'W

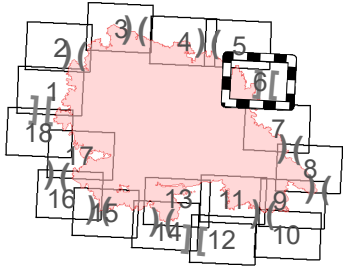
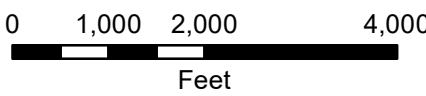
122°49'W

122°48'W

122°47'W

122°46'W

122°45'W



Index Map

IAP Map

Archie Creek Fire

OR-UPF-000436

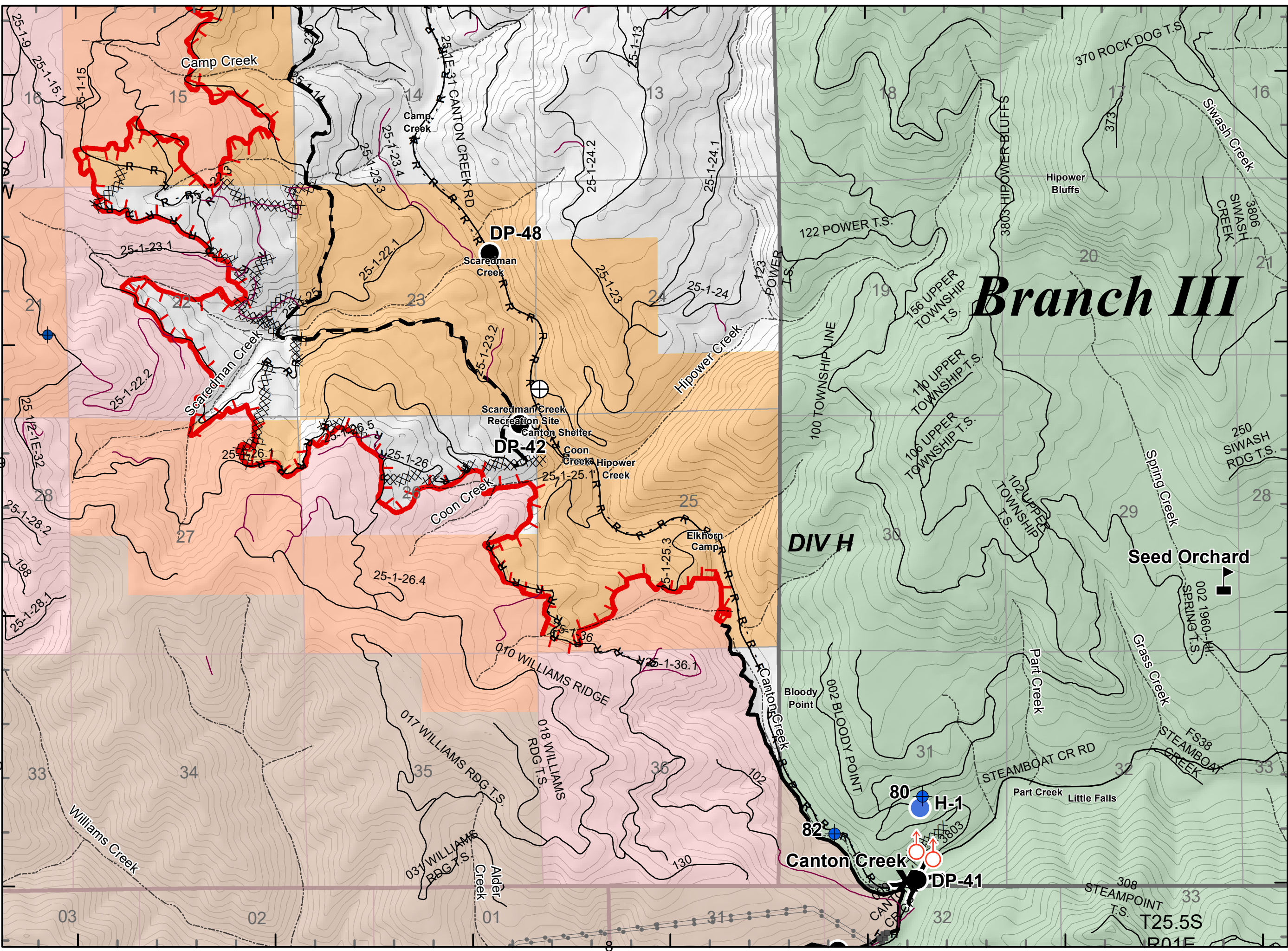
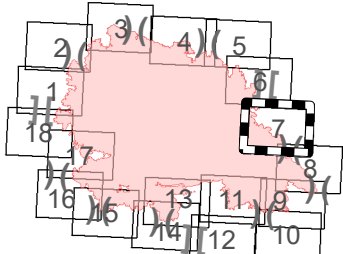
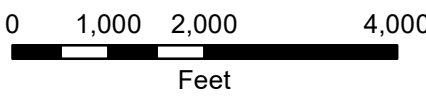
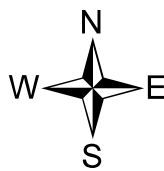
9/26/2020 0600 - 2000hrs

131,642 Acres

Map Page: 7

Div H

- Residence
- Roads
- Streams
- Airstrip or Airport
- Camp
- Closure
- Dip Site
- Drop Point
- Fire Origin
- Helispot
- Mobile Weather Unit
- Repeater
- Safety Zone
- Spot Fire
- Staging Area
- Water Development or Draft Site
- Value at Risk
- Division Break
- Branch Break
- Uncontrolled Fire Edge
- Contained Line
- Completed Dozer Line
- Completed Hand Line
- Road as Completed Line
- Completed Burnout
- Planned Fire Line
- Planned Secondary Line
- Management Action Point
- Wildfire Daily Fire Perimeter



Branch III

DIV H

Seed Orchard

Canton Creek

Index Map

IAP Map

Archie Creek Fire

OR-UPF-000436

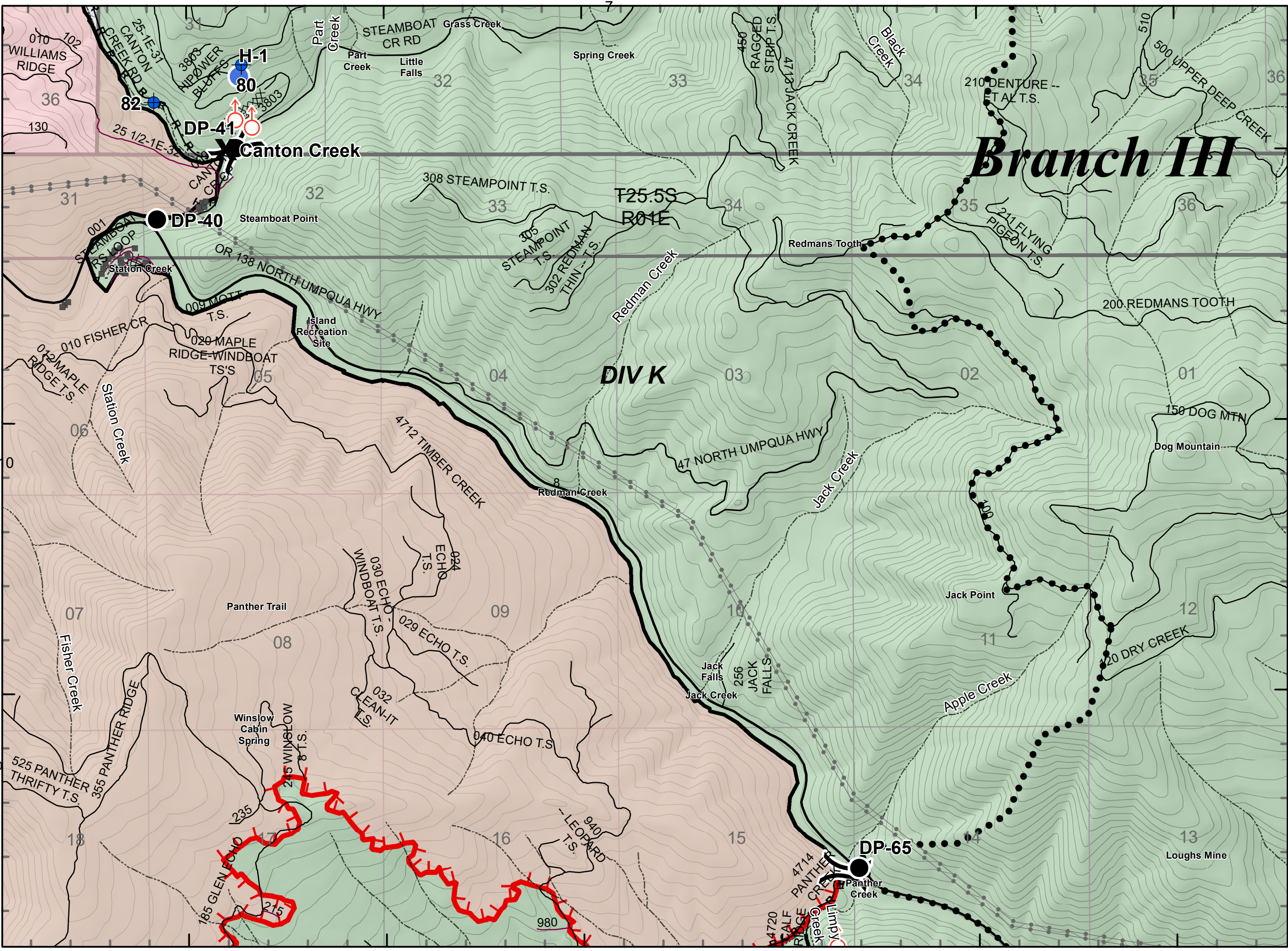
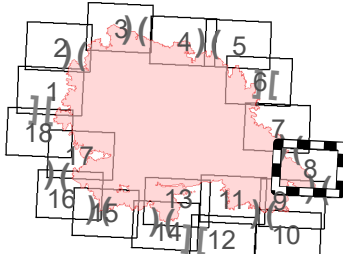
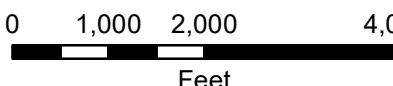
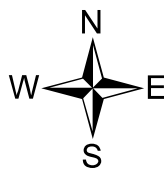
9/26/2020 0600 - 2000hrs

131,642 Acres

Map Page: 8

Div K

- Residence
- Roads
- Streams
- Airstrip or Airport
- Camp
- Closure
- Dip Site
- Drop Point
- Fire Origin
- Helispot
- Mobile Weather Unit
- Repeater
- Safety Zone
- Spot Fire
- Staging Area
- Water Development or Draft Site
- Value at Risk
- Division Break
- Branch Break
- Uncontrolled Fire Edge
- Contained Line
- Completed Dozer Line
- Completed Hand Line
- Road as Completed Line
- Completed Burnout
- Planned Fire Line
- Planned Secondary Line
- Management Action Point
- Wildfire Daily Fire Perimeter



Index Map

IAP Map

Archie Creek Fire

OR-UPF-000436

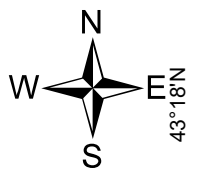
9/26/2020 0600 - 2000hrs

131,642 Acres

Map Page: 9

Div N

- Residence
- Roads
- Streams
- Airstrip or Airport
- Camp
- Closure
- Dip Site
- Drop Point
- Fire Origin
- Helispot
- Mobile Weather Unit
- Repeater
- Safety Zone
- Spot Fire
- Staging Area
- Water Development or Draft Site
- Value at Risk
- Division Break
- Branch Break
- Uncontrolled Fire Edge
- Contained Line
- Completed Dozer Line
- Completed Hand Line
- Road as Completed Line
- Completed Burnout
- Planned Fire Line
- Planned Secondary Line
- Management Action Point
- Wildfire Daily Fire Perimeter

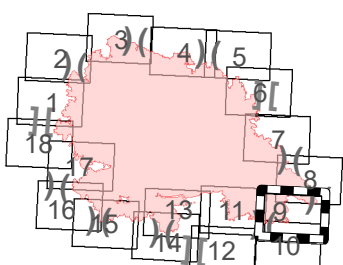


43°18'N

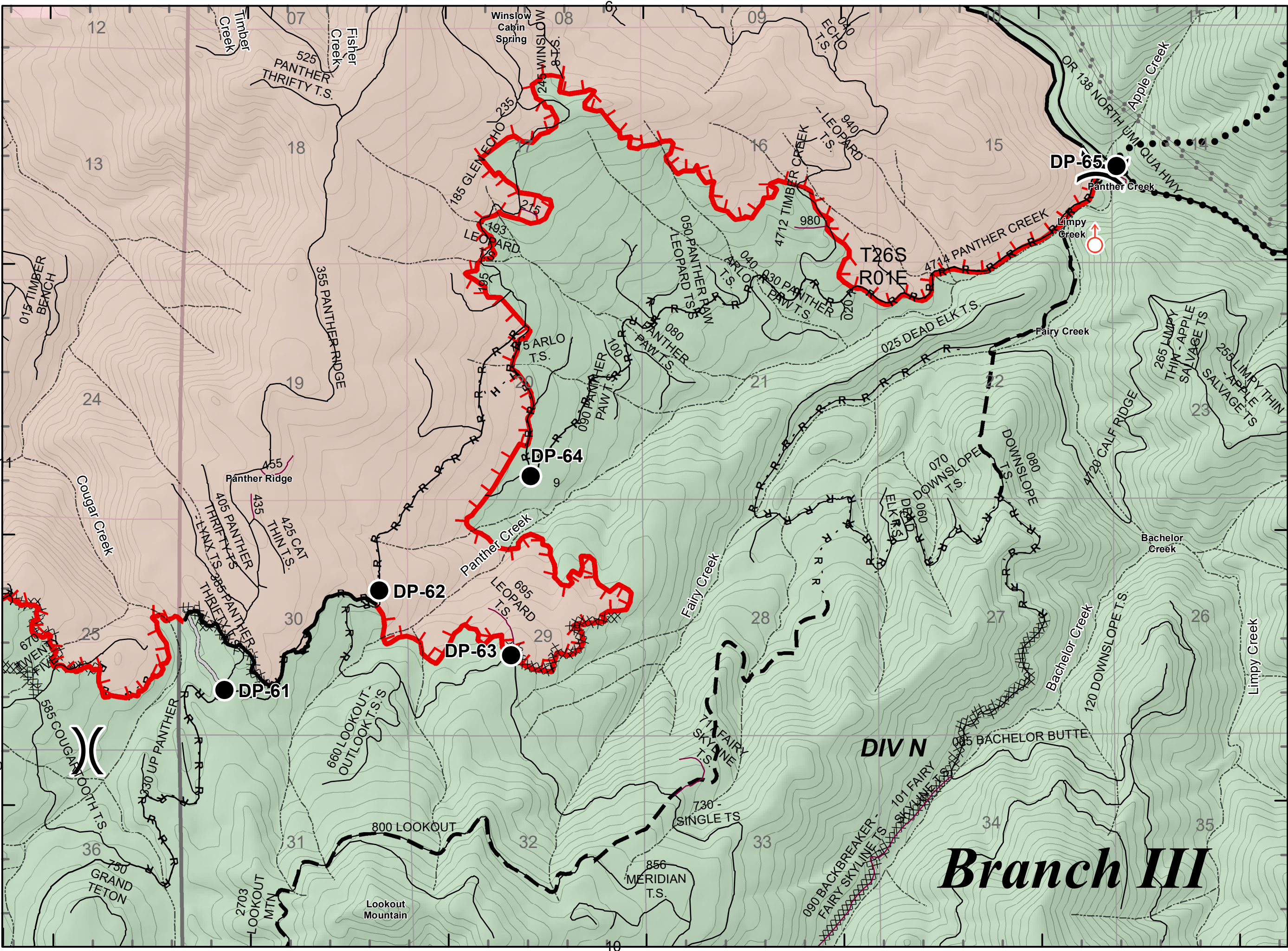
43°17'N

43°16'N

0 1,000 2,000 4,000 Feet



Index Map



122°46'W 122°45'W 122°44'W 122°43'W 122°42'W 122°41'W 122°40'W

IAP Map

Archie Creek Fire

OR-UPF-000436

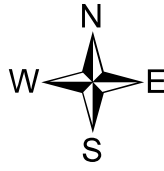
9/26/2020 0600 - 2000hrs

131,642 Acres

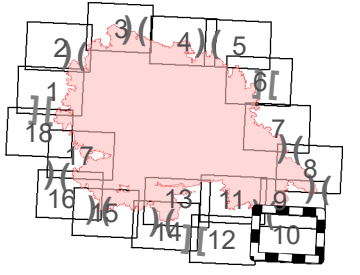
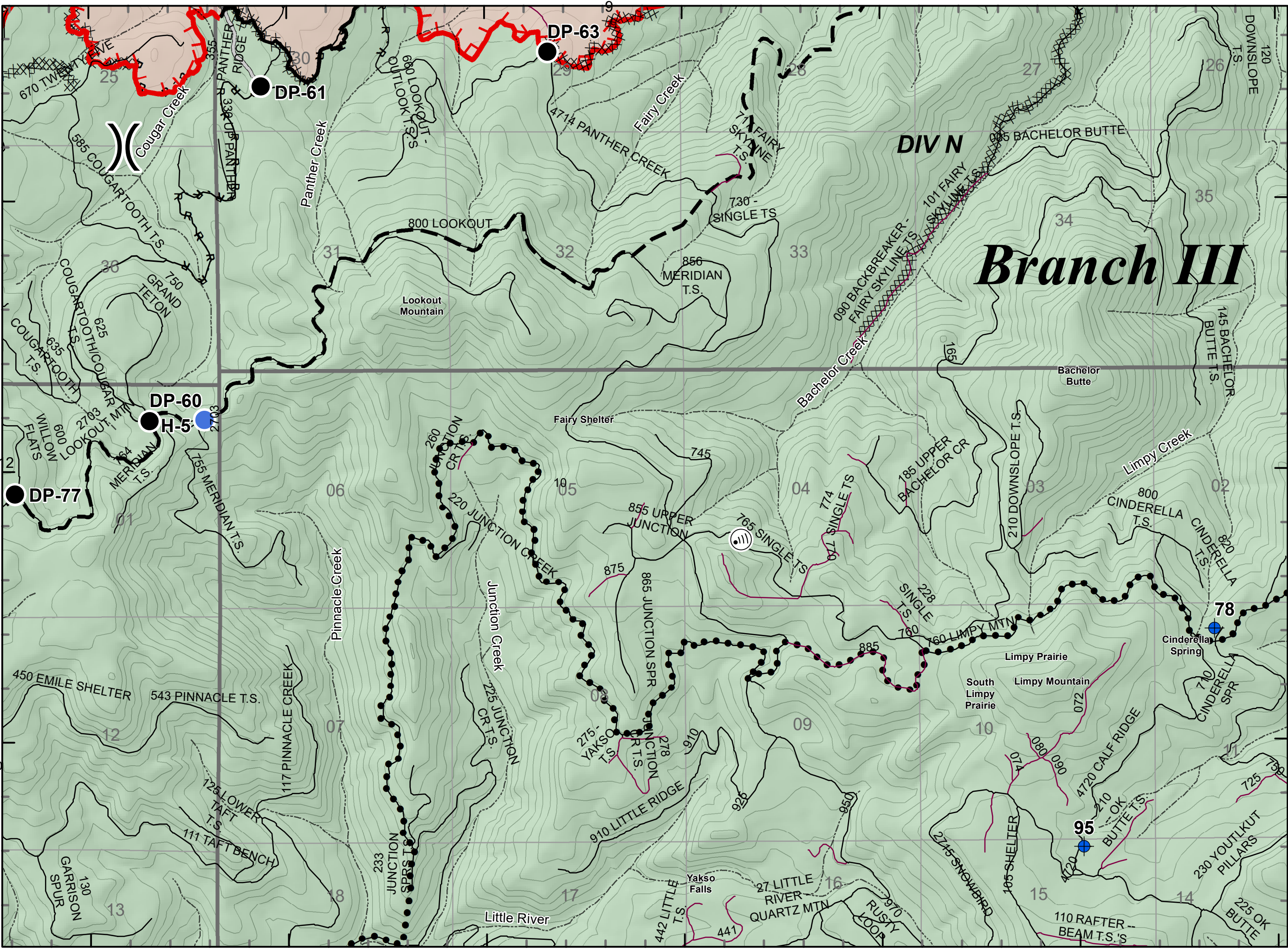
Map Page: 10

Div N

- Residence
- Roads
- Streams
- Airstrip or Airport
- Camp
- Closure
- Dip Site
- Drop Point
- Fire Origin
- Helispot
- Mobile Weather Unit
- Repeater
- Safety Zone
- Spot Fire
- Staging Area
- Water Development or Draft Site
- Value at Risk
- Division Break
- Branch Break
- Uncontrolled Fire Edge
- Contained Line
- Completed Dozer Line
- Completed Hand Line
- Road as Completed Line
- Completed Burnout
- Planned Fire Line
- Planned Secondary Line
- Management Action Point
- Wildfire Daily Fire Perimeter



43°16'N
43°15'N
43°14'N
0
1,000
2,000
4,000
Feet



Index Map

122°46'W 122°45'W 122°44'W 122°43'W 122°42'W 122°41'W 122°40'W

IAP Map

Archie Creek Fire

OR-UPF-000436

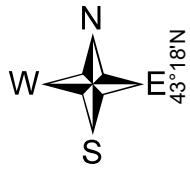
9/26/2020 0600 - 2000hrs

131,642 Acres

Map Page: 11

Div Q

- Residence
- Roads
- Streams
- Airstrip or Airport
- Camp
- Closure
- Dip Site
- Drop Point
- Fire Origin
- Helispot
- Mobile Weather Unit
- Repeater
- Safety Zone
- Spot Fire
- Staging Area
- Water Development or Draft Site
- Value at Risk
- Division Break
- Branch Break
- Uncontrolled Fire Edge
- Contained Line
- Completed Dozer Line
- Completed Hand Line
- Road as Completed Line
- Completed Burnout
- Planned Fire Line
- Planned Secondary Line
- Management Action Point
- Wildfire Daily Fire Perimeter

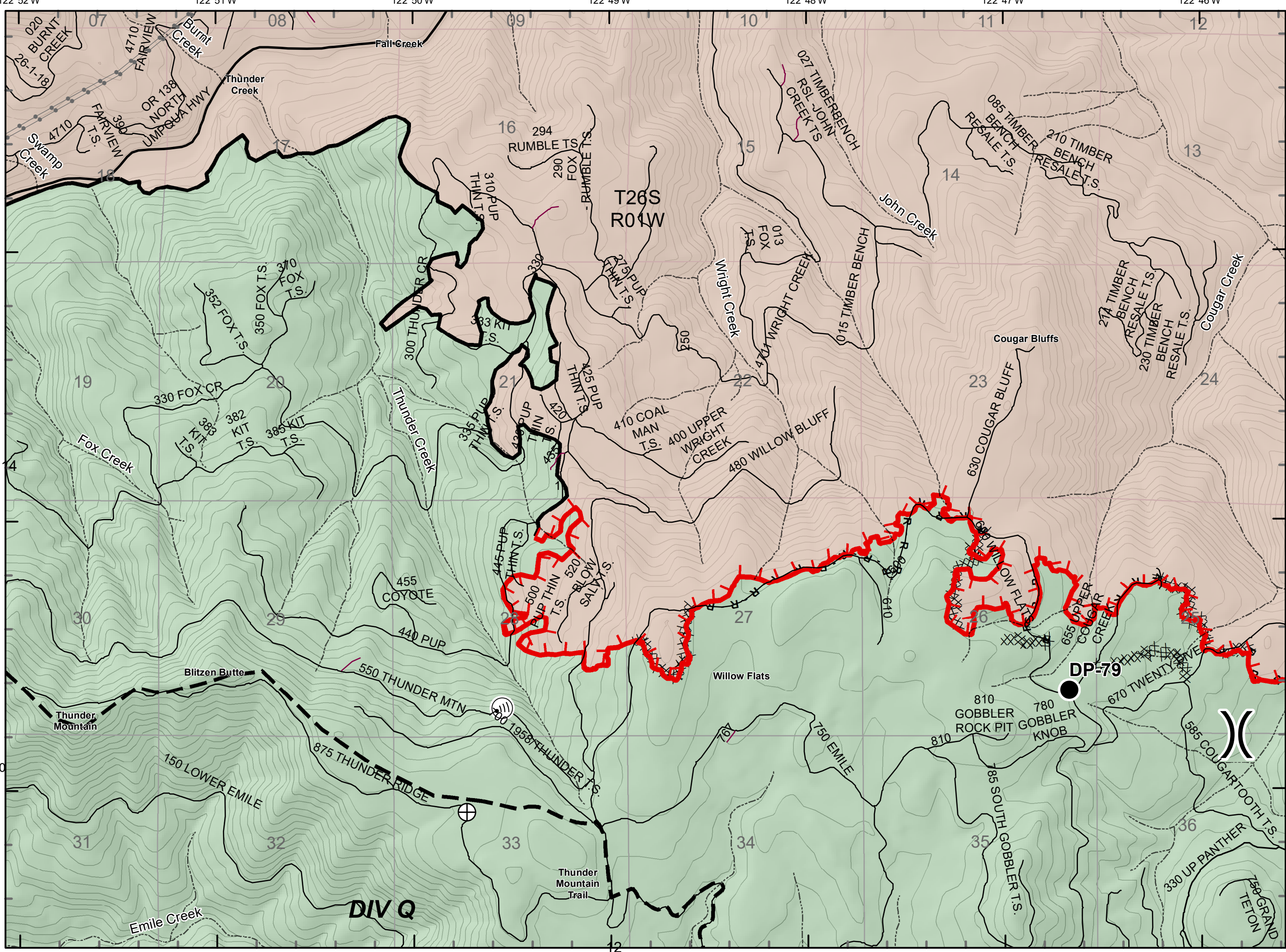


43°18'N

43°17'N

43°16'N

43°16'N



43°18'N

43°17'N

43°16'N

43°16'N

122°52'W

122°51'W

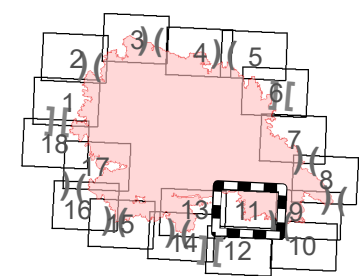
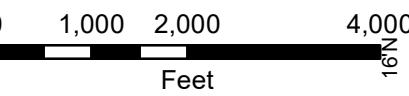
122°50'W

122°49'W

122°48'W

122°47'W

122°46'W



Index Map

IAP Map

Archie Creek Fire

OR-UPF-000436

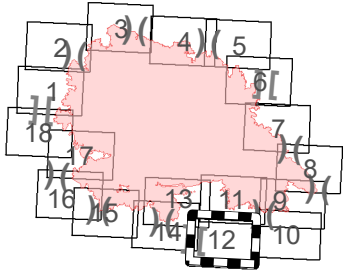
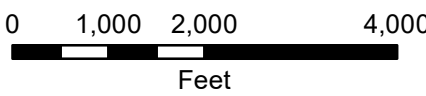
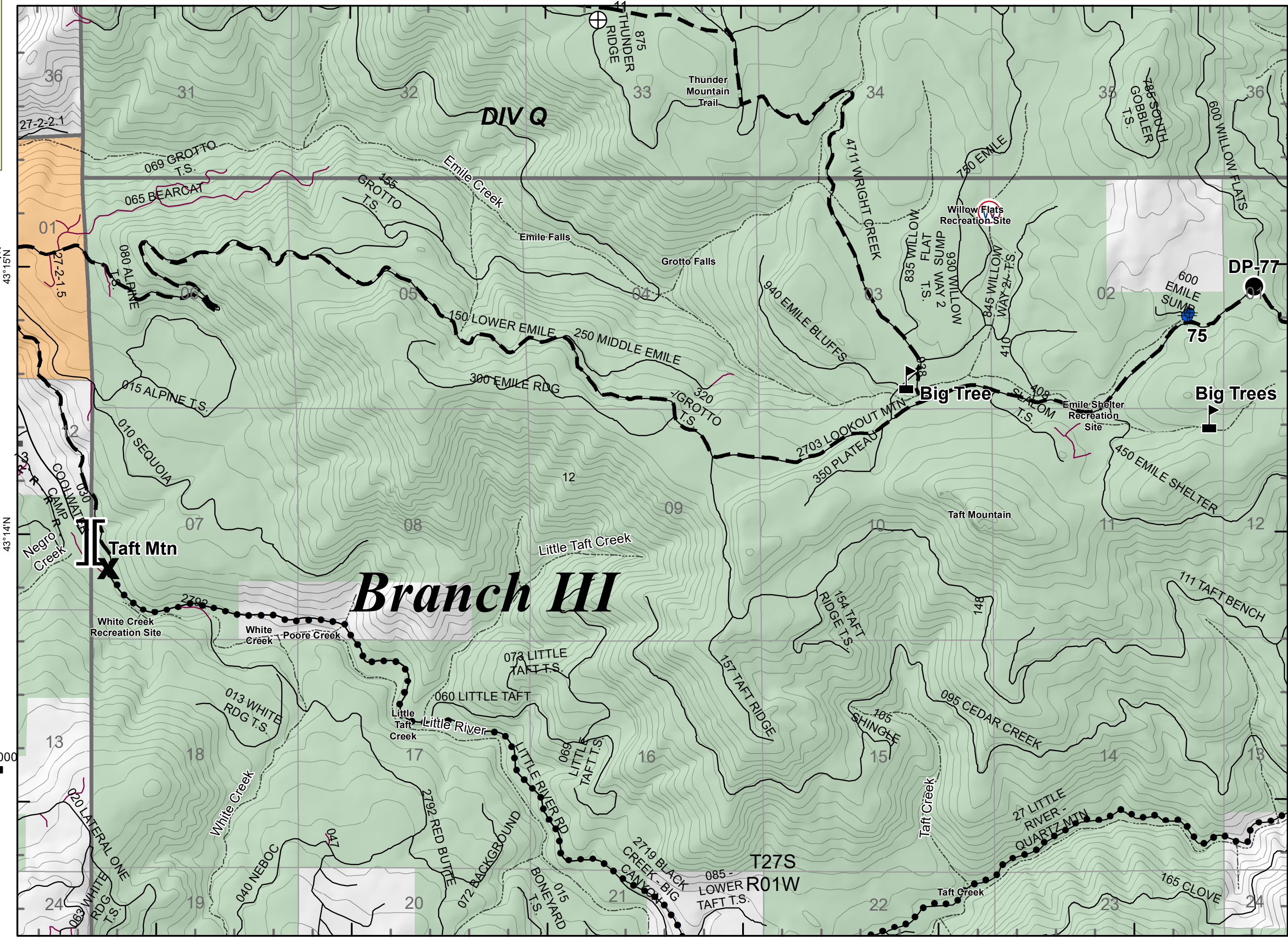
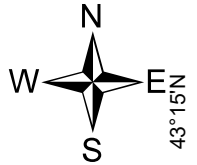
9/26/2020 0600 - 2000hrs

131,642 Acres

Map Page: 12

Div Q

- Residence
- Roads
- Streams
- Airstrip or Airport
- Camp
- Closure
- Dip Site
- Drop Point
- Fire Origin
- Helispot
- Mobile Weather Unit
- Repeater
- Safety Zone
- Spot Fire
- Staging Area
- Water Development or Draft Site
- Value at Risk
- Division Break
- Branch Break
- Uncontrolled Fire Edge
- Contained Line
- Completed Dozer Line
- Completed Hand Line
- Road as Completed Line
- Completed Burnout
- Planned Fire Line
- Planned Secondary Line
- Management Action Point
- Wildfire Daily Fire Perimeter



Index Map

IAP Map

Archie Creek Fire

OR-UPF-000436

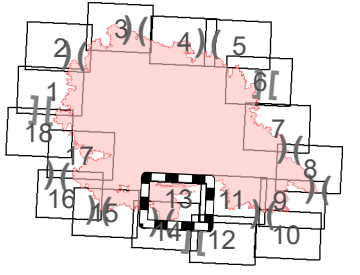
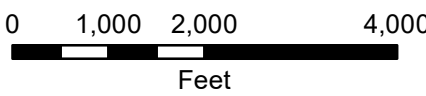
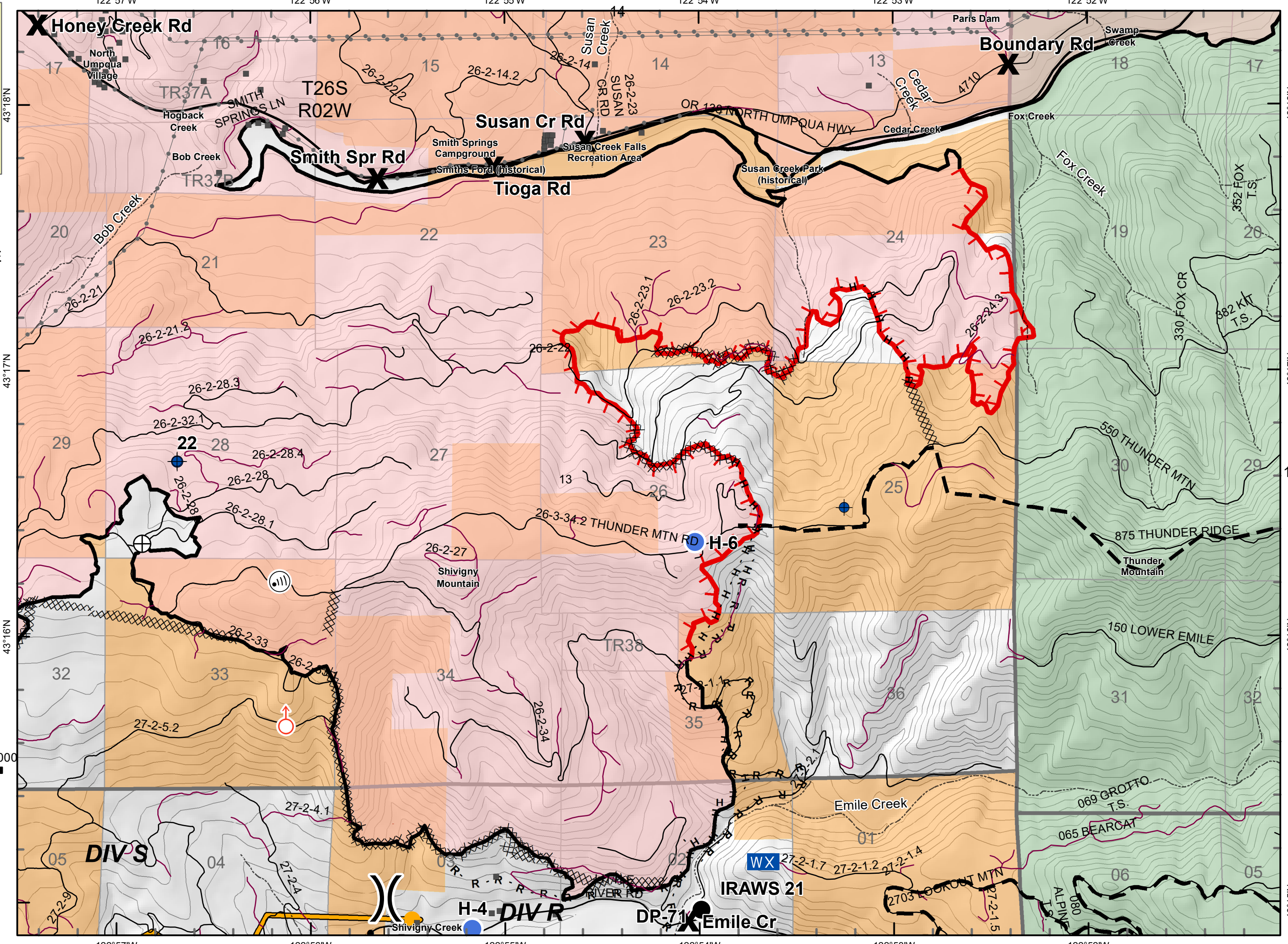
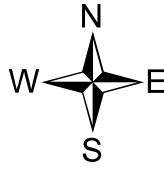
9/26/2020 0600 - 2000hrs

131,642 Acres

Map Page: 13

Div R, S

- Residence
- Roads
- Streams
- Airstrip or Airport
- Camp
- Closure
- Dip Site
- Drop Point
- Fire Origin
- Helispot
- Mobile Weather Unit
- Repeater
- Safety Zone
- Spot Fire
- Staging Area
- Water Development or Draft Site
- Value at Risk
- Division Break
- Branch Break
- Uncontrolled Fire Edge
- Contained Line
- Completed Dozer Line
- Completed Hand Line
- Road as Completed Line
- Completed Burnout
- Planned Fire Line
- Planned Secondary Line
- Management Action Point
- Wildfire Daily Fire Perimeter



Index Map

DIV S

H-4 DIV R

IRAWS 21

Emile Cr

Shivigny Creek

IAP Map

Archie Creek Fire

OR-UPF-000436

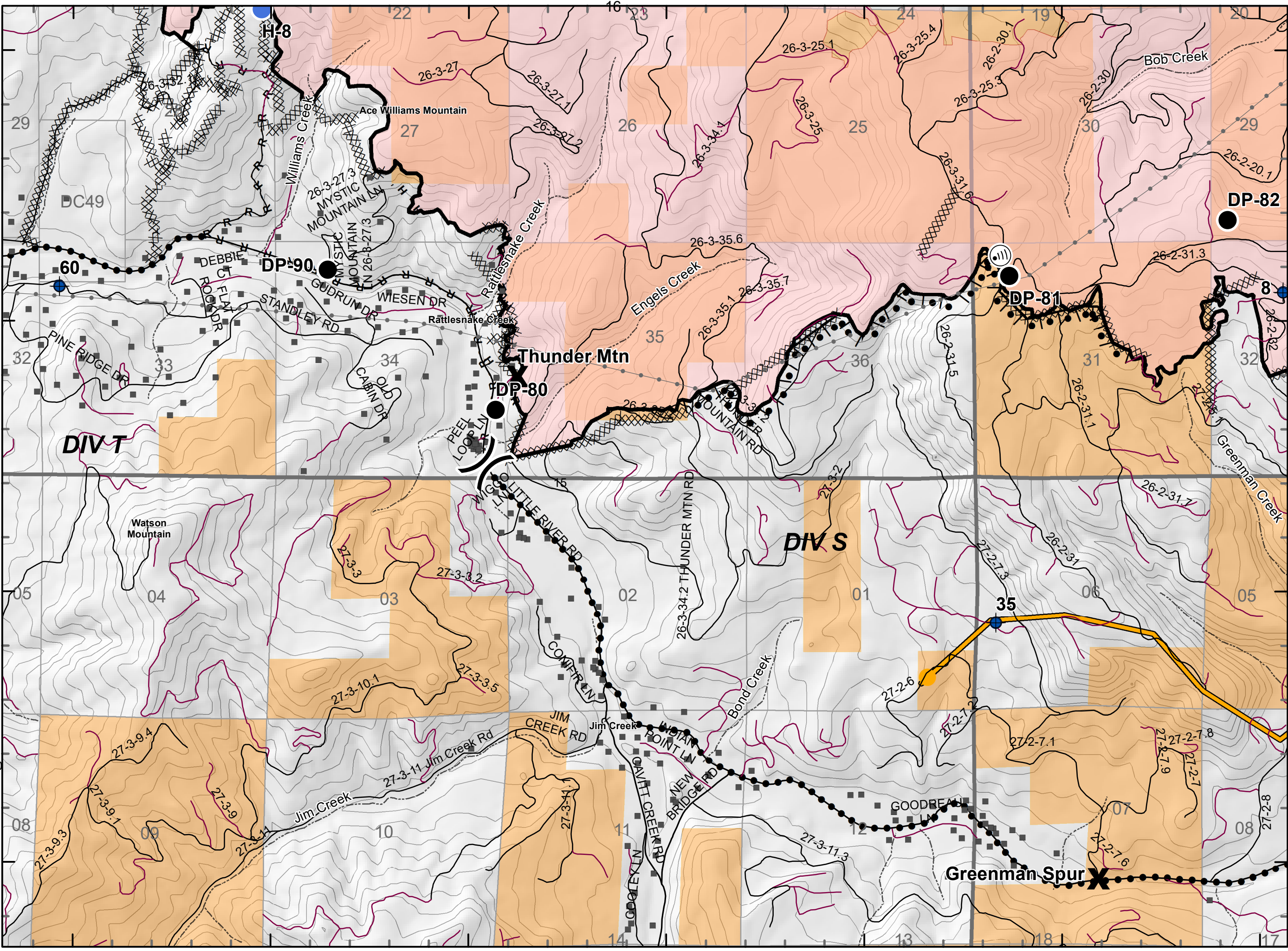
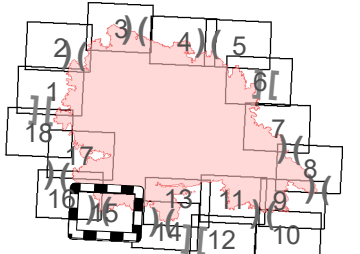
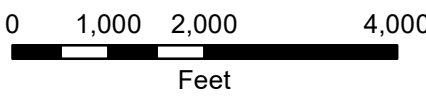
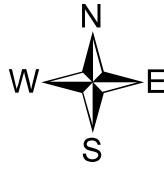
9/26/2020 0600 - 2000hrs

131,642 Acres

Map Page: 15

Div S, T

- Residence
- Roads
- Streams
- Airstrip or Airport
- Camp
- Closure
- Dip Site
- Drop Point
- Fire Origin
- Helispot
- Mobile Weather Unit
- Repeater
- Safety Zone
- Spot Fire
- Staging Area
- Water Development or Draft Site
- Value at Risk
- Division Break
- Branch Break
- Uncontrolled Fire Edge
- Contained Line
- Completed Dozer Line
- Completed Hand Line
- Road as Completed Line
- Completed Burnout
- Planned Fire Line
- Planned Secondary Line
- Management Action Point
- Wildfire Daily Fire Perimeter



Index Map

IAP Map

Archie Creek Fire
OR-UPF-000436

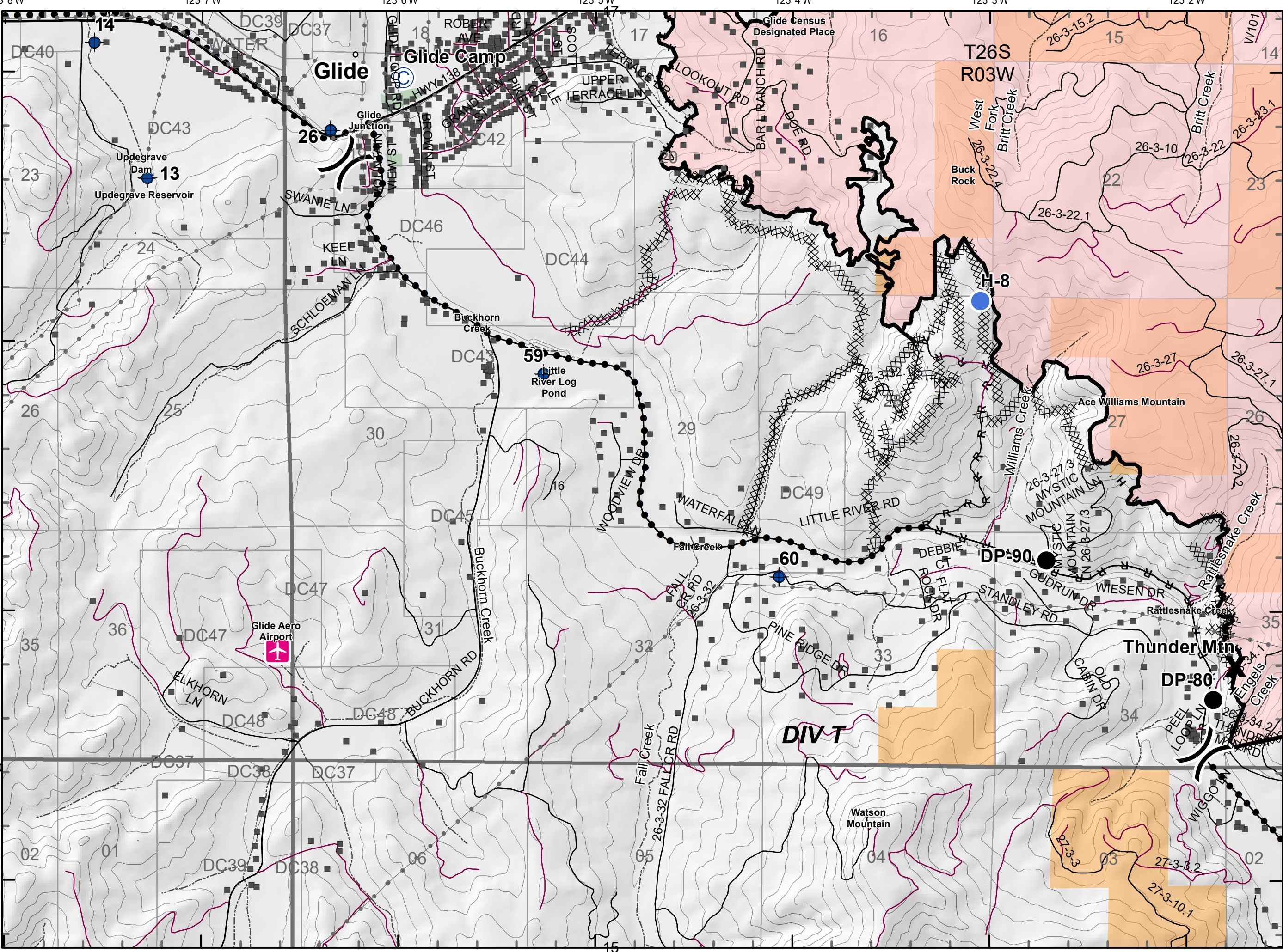
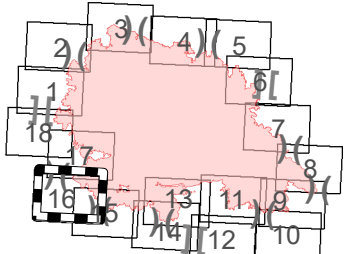
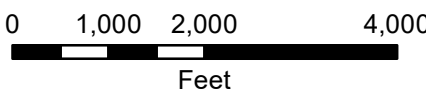
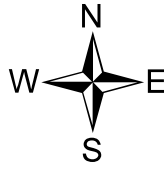
9/26/2020 0600 - 2000hrs

131,642 Acres

Map Page: 16

Div T

- Residence
- Roads
- Streams
- Airstrip or Airport
- Camp
- Closure
- Dip Site
- Drop Point
- Fire Origin
- Helispot
- Mobile Weather Unit
- Repeater
- Safety Zone
- Spot Fire
- Staging Area
- Water Development or Draft Site
- Value at Risk
- Division Break
- Branch Break
- Uncontrolled Fire Edge
- Contained Line
- Completed Dozer Line
- Completed Hand Line
- Road as Completed Line
- Completed Burnout
- Planned Fire Line
- Planned Secondary Line
- Management Action Point
- Wildfire Daily Fire Perimeter



IAP Map

Archie Creek Fire

OR-UPF-000436

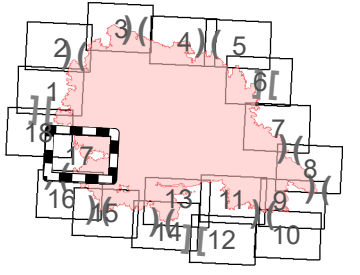
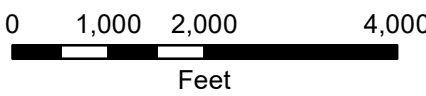
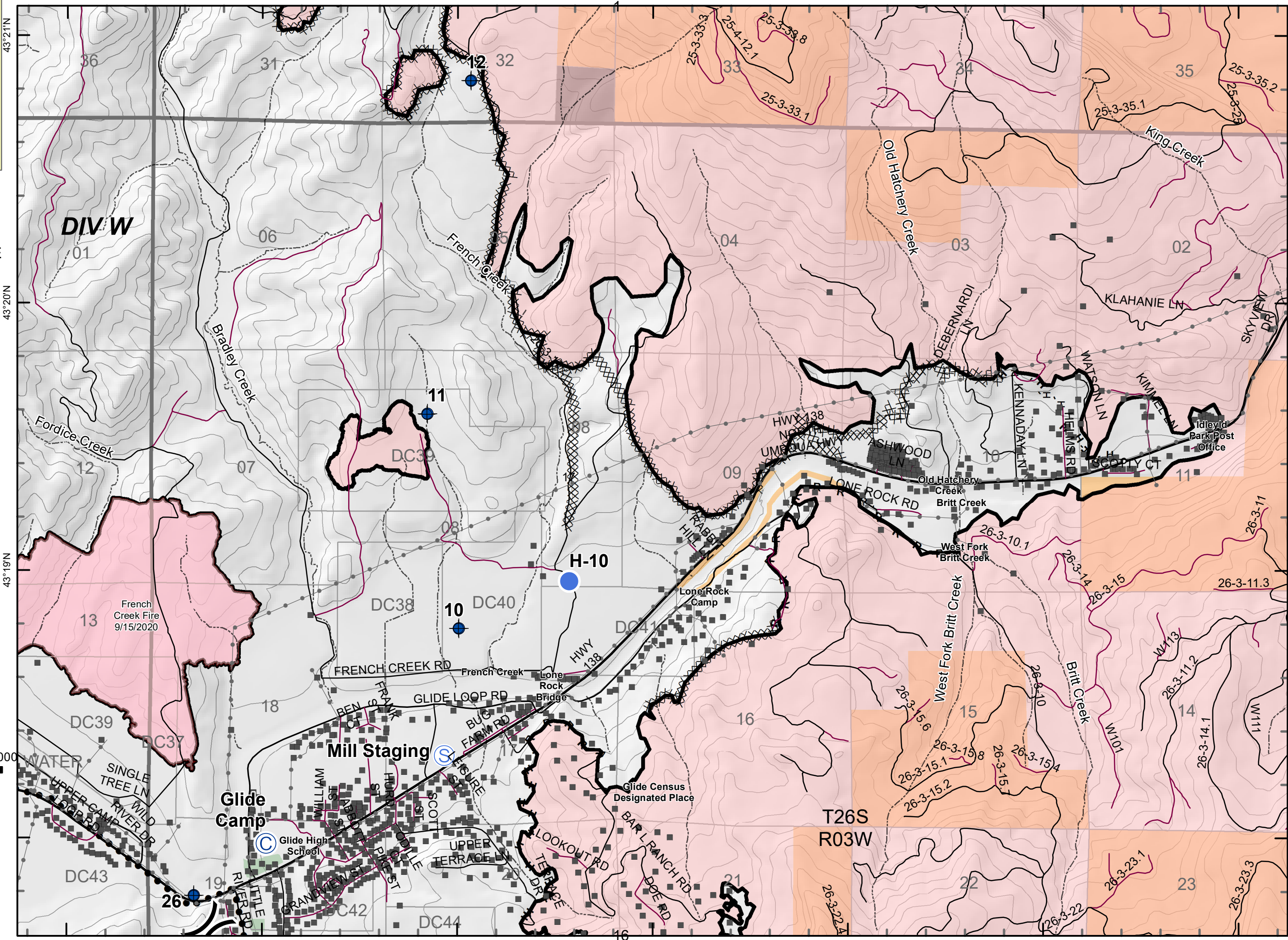
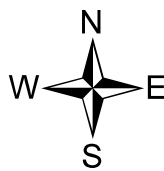
9/26/2020 0600 - 2000hrs

131,642 Acres

Map Page: 17

Div W

- Residence
- Roads
- Streams
- Airstrip or Airport
- Camp
- Closure
- Dip Site
- Drop Point
- Fire Origin
- Helispot
- Mobile Weather Unit
- Repeater
- Safety Zone
- Spot Fire
- Staging Area
- Water Development or Draft Site
- Value at Risk
- Division Break
- Branch Break
- Uncontrolled Fire Edge
- Contained Line
- Completed Dozer Line
- Completed Hand Line
- Road as Completed Line
- Completed Burnout
- Planned Fire Line
- Planned Secondary Line
- Management Action Point
- Wildfire Daily Fire Perimeter



Index Map

IAP Map

Archie Creek Fire
OR-UPF-000436

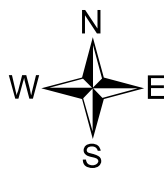
9/26/2020 0600 - 2000hrs

131,642 Acres

Map Page: 18

Div W

- Residence
- Roads
- Streams
- Airstrip or Airport
- Camp
- Closure
- Dip Site
- Drop Point
- Fire Origin
- Helispot
- Mobile Weather Unit
- Repeater
- Safety Zone
- Spot Fire
- Staging Area
- Water Development or Draft Site
- Value at Risk
- Division Break
- Branch Break
- Uncontrolled Fire Edge
- Contained Line
- Completed Dozer Line
- Completed Hand Line
- Road as Completed Line
- Completed Burnout
- Planned Fire Line
- Planned Secondary Line
- Management Action Point
- Wildfire Daily Fire Perimeter



43°22'N

43°21'N

43°20'N

123°11'W

123°10'W

123°9'W

123°8'W

123°7'W

123°6'W

123°5'W

43°22'N

43°21'N

43°20'N

43°20'N

123°11'W

123°10'W

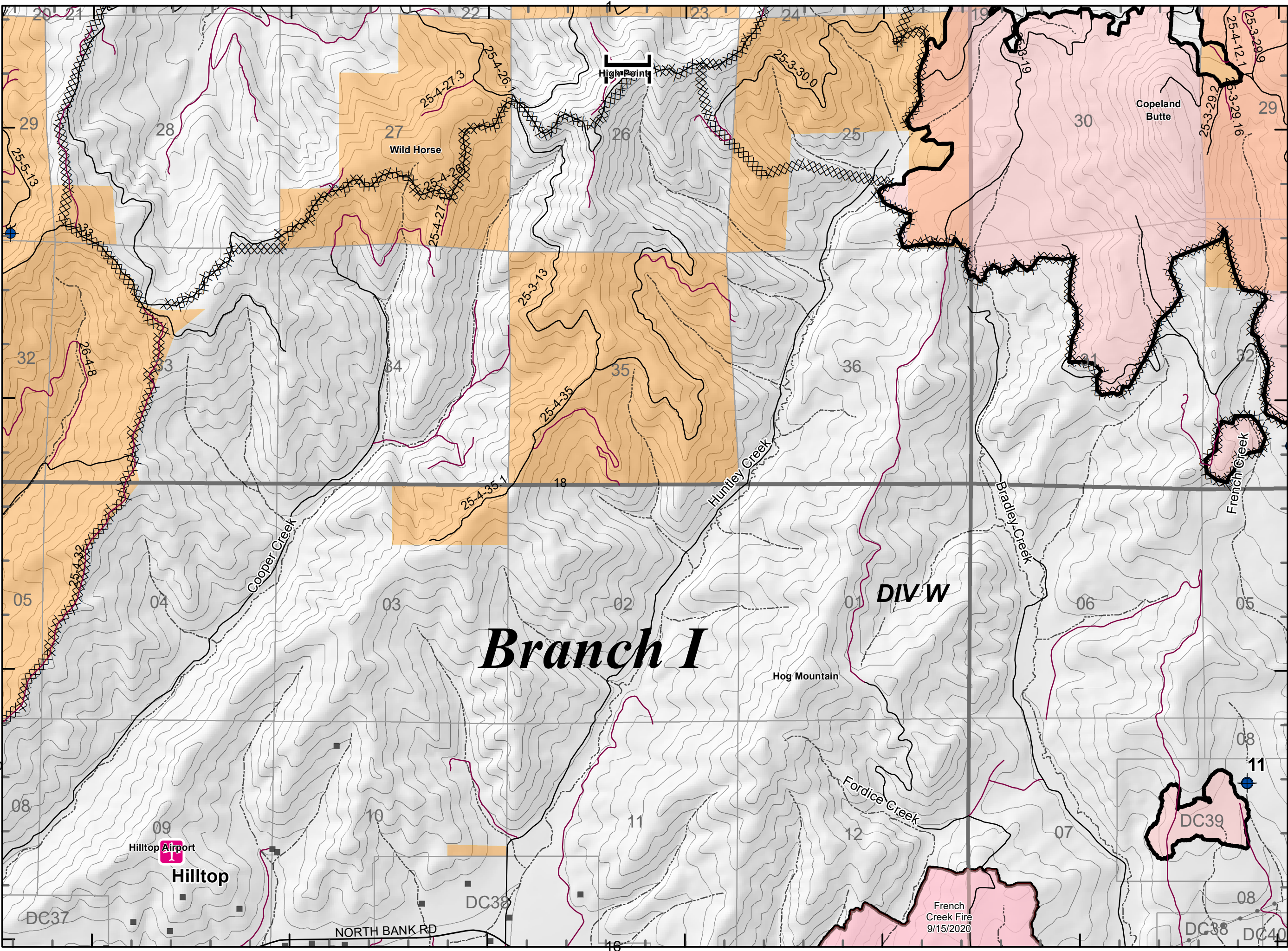
123°9'W

123°8'W

123°7'W

123°6'W

123°5'W



Branch I

DIV W

Hilltop Airport
Hilltop

Wild Horse

High Point

Copeland Butte

Hog Mountain

French Creek

French Creek Fire
9/15/2020

DC37

DC38

DC39

DC38 DC40

NORTH BANK RD

Index Map