

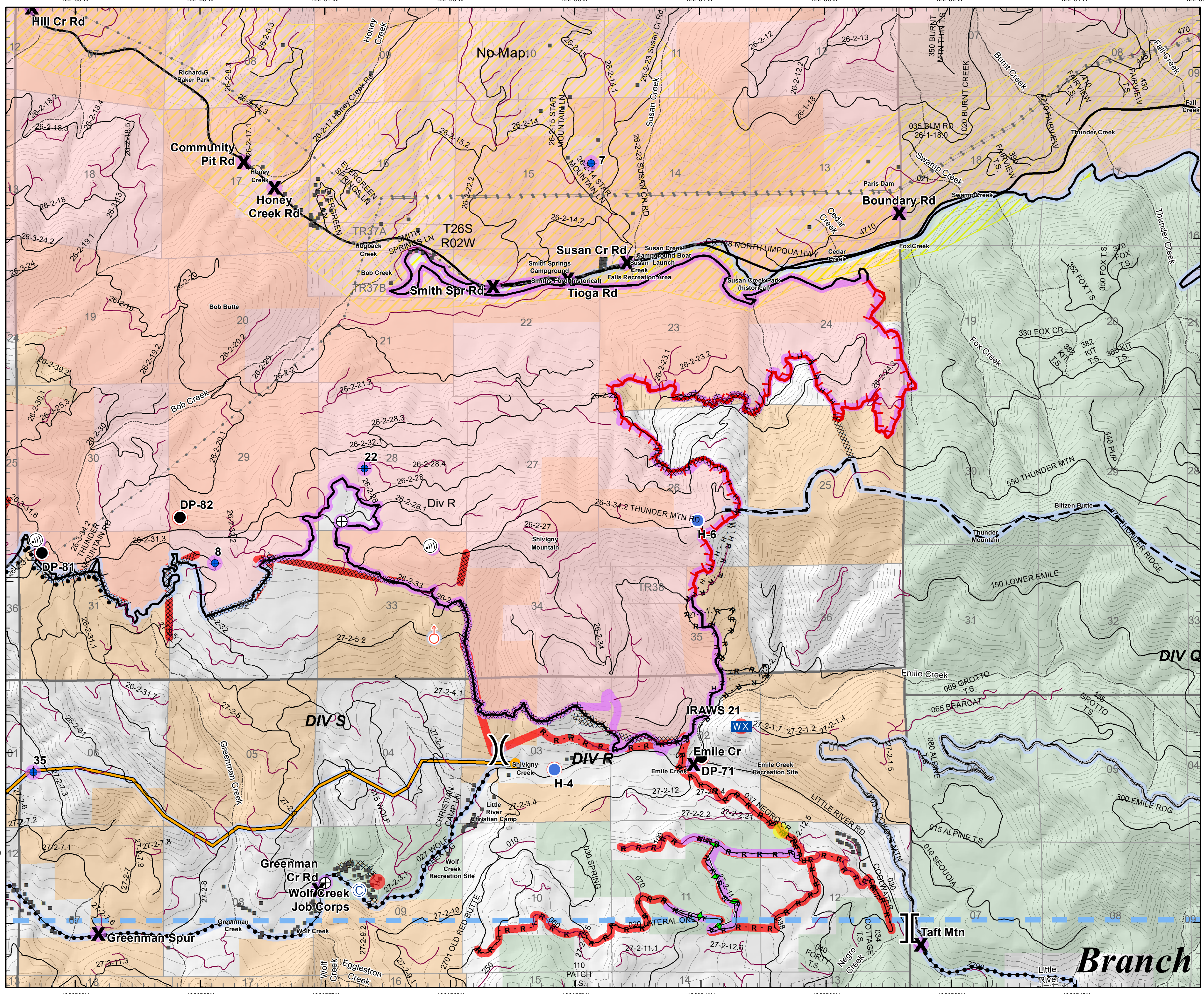
Suppression Repair
Archie Creek Fire
OR-UPF-000436
9/27/2020

131,542 Acres
Map Page: 9
Div R



- In Progress
- Repair Needed
- No Repair Needed
- Unknown
- Camp
- X** Closure
- + Dip Site
- Drop Point
- Helispot
- Internet Access
- WX Mobile Weather Unit
- Spot Fire
- + Draft Site
- ()** Division Break
- []** Branch Break

- PP&L Transmission Lines
 - Repair Needed
 - No Repair Needed
 - Unknown
 - ▬ Uncontrolled Fire Edge
 - ▬ Contained Line
 - Completed Dozer Line
 - H Completed Hand Line
 - R Road as Completed Line
 - ▬ Access or Improved Road
 - ▬ Completed Plow Line
 - ▬ Completed Burnout
 - Planned Fire Line
 - Planned Secondary Line
 - ▬ Temporary Flight Restriction
 - Management Action Point
 - ▬ PP&L Transmission Lines
 - ▬ Other
 - ▬ Intermediate
 - ▬ Paved
 - ▬ All Weather
- 0 2,000 4,000
feet
- BLM Feet
USFS
- Index Map
-



Branch