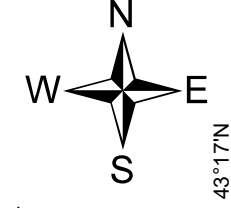


**Supression Repair**  
**Archie Creek Fire**  
**OR-UPF-000436**  
**9/29/2020**

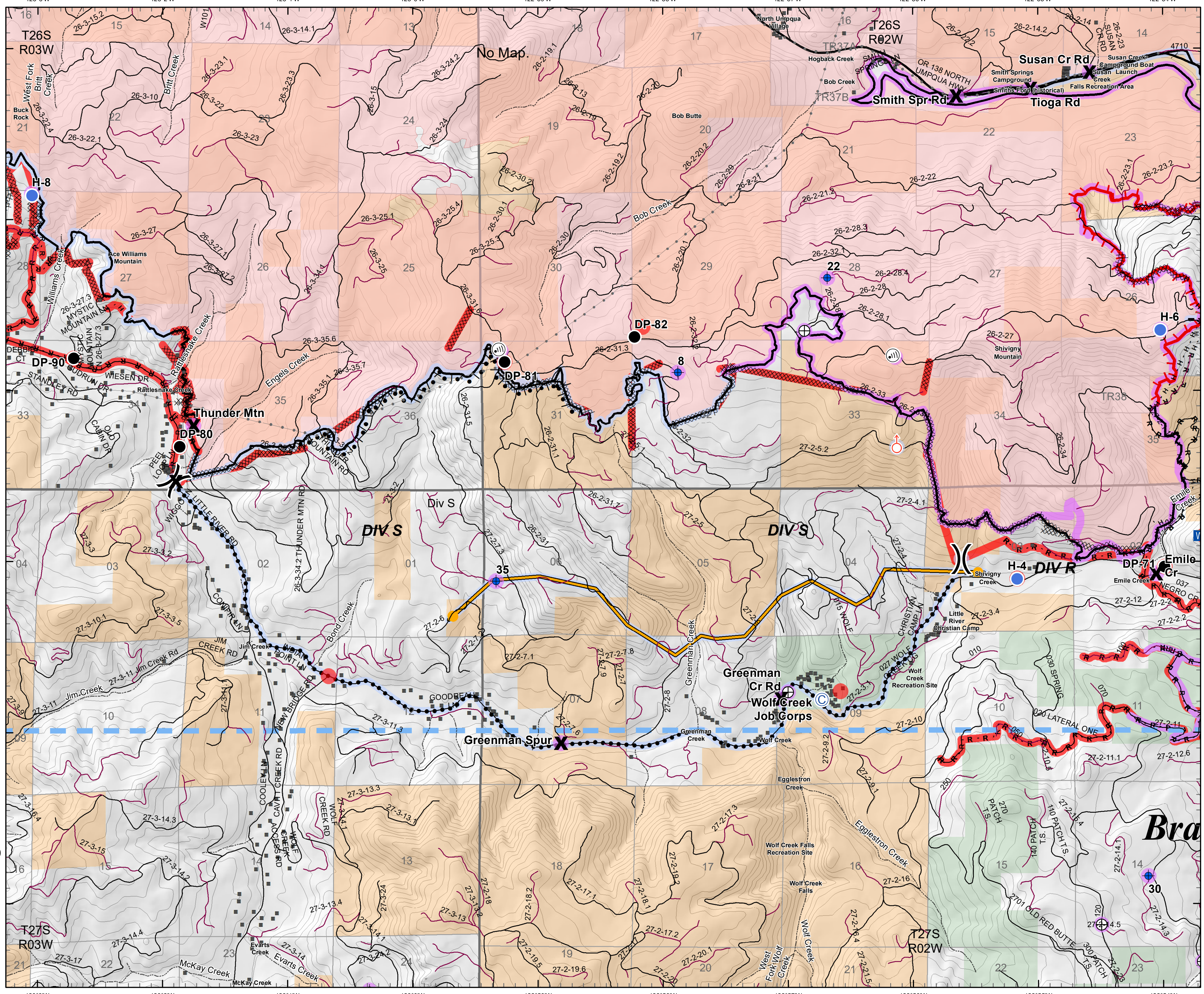
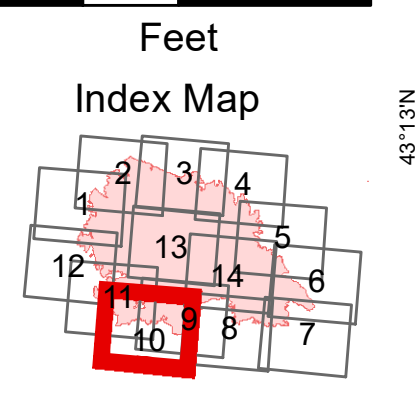
**131,542 Acres**  
**Map Page: 10**  
**Div S**



- Repair Needed
- No Repair Needed
- Unknown
- C Camp
- X** Closure
- + Dip Site
- Drop Point
- Helispot
- i Internet Access
- WX Mobile Weather Unit
- Spot Fire
- + Draft Site
- ( )** Division Break

- PP&L Transmission Lines
- Repair Needed
- No Repair Needed
- Unknown
- Uncontrolled Fire Edge
- Contained Line
- Completed Dozer Line
- Completed Hand Line
- Road as Completed Line
- Completed Burnout
- Planned Fire Line
- Planned Secondary Line
- Temporary Flight Restriction
- Management Action Point
- PP&L Transmission Lines
- Other
- Intermediate
- Paved
- All Weather/Dirt
- Streams
- BLM
- USFS

0 2,000 4,000



**Bra**