

Suppression Repair Map
131,542 Acres

Archie Creek
OR-UPF-000436
09/29/2020



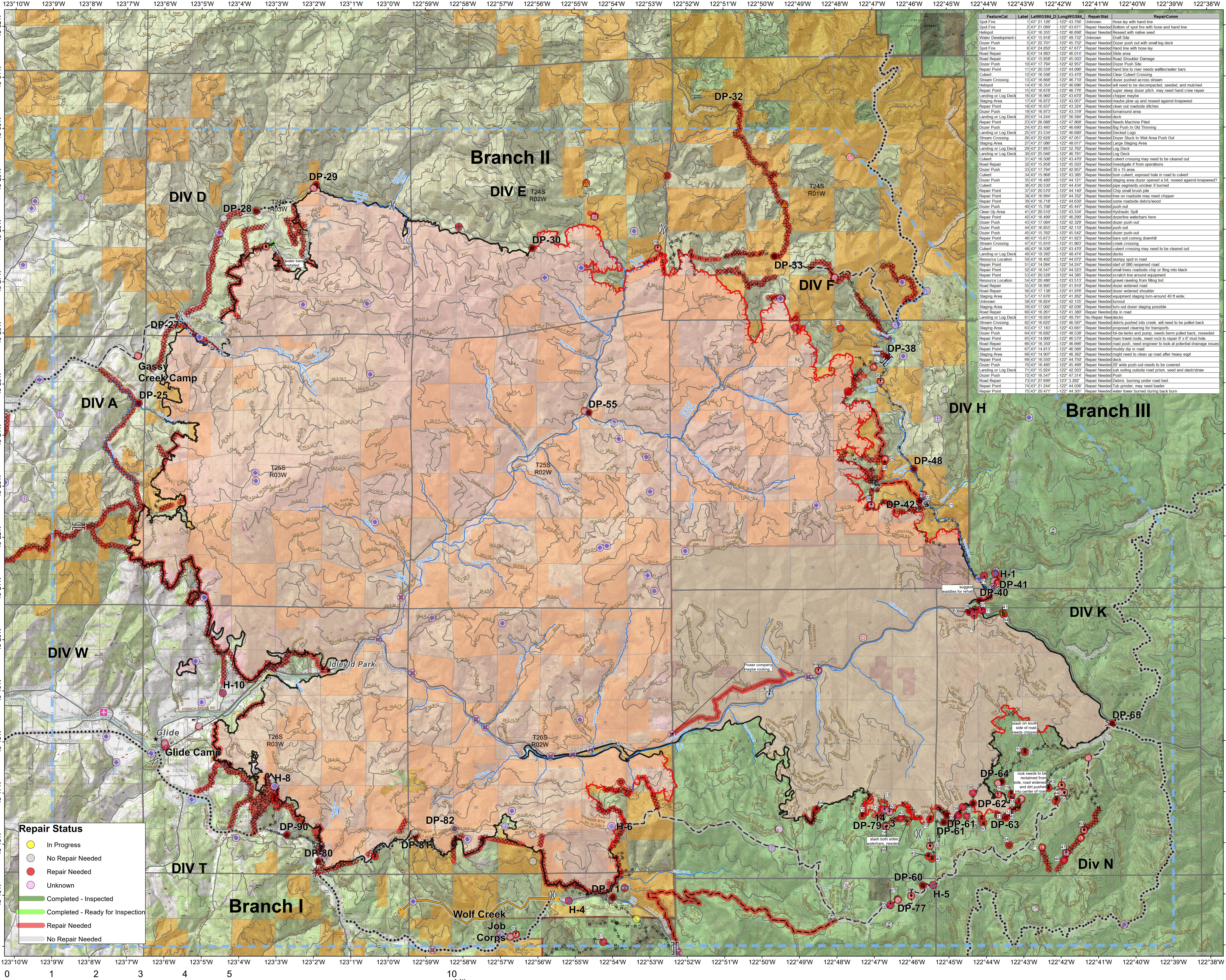
Legend

- Airstrip or Airport
- Camp
- Clean Up Area
- Closure
- Culvert
- Dip Site
- Drop Point
- Dozer Push
- Fire Origin
- Helispot
- Internet Access
- Landing or Log Deck
- Lookout
- Mobile Weather Unit
- Repair Point
- Repeater
- Resource Location
- Road Repair
- Safety Zone
- Staging Area
- Stream Crossing
- Restricted Water Source
- Potential Draft Site
- Value at Risk
- Unknown
- Division Break
- Branch Break
- Uncontrolled Fire Edge
- Contained Line
- Completed Dozer Line
- Completed Hand Line
- Road as Completed Line
- Access or Improved Road
- Completed Burnout
- Planned Fire Line
- Planned Secondary Line
- Temporary Flight Restriction
- Road Repair
- Management Action Point

Repair Status

- In Progress
- No Repair Needed
- Repair Needed
- Unknown
- Completed - Inspected
- Completed - Ready for Inspection
- Repair Needed
- No Repair Needed

9/28/2020 @ 2052
 NAD 1983 UTM Zone 10N
 SA Red Team GIS
 Latest Intel:
 20200927 @ 2057 hrs



FeatureCat	Label	Lat/WGS84	Long/WGS84	RepairStat	RepairComm
Spot Fire	243° 21 099'	122° 43 756'		Repair Needed	Lineup
Spot Fire	243° 21 099'	122° 43 671'		Repair Needed	Bottom of spot fire with hose and hand line
Helispot	343° 16 355'	122° 46 698'		Repair Needed	Resealed with native seed
Water Development	443° 16 819'	122° 49 732'		Repair Needed	Bottom
Dozer Push	543° 22 701'	122° 45 752'		Repair Needed	Dozer push out with small log deck
Spot Fire	643° 24 850'	122° 47 077'		Repair Needed	Hand line with hose lay
Road Repair	643° 14 883'	122° 46 014'		Repair Needed	Shoulder area
Road Repair	843° 15 958'	122° 45 503'		Repair Needed	Road Shoulder Damage
Dozer Push	1043° 17 794'	122° 42 957'		Repair Needed	Dozer Push Site
Road Repair	1143° 20 559'	122° 44 096'		Repair Needed	Hand line to river needs waltes/water bars
Culvert	1243° 16 898'	122° 43 470'		Repair Needed	Clear Culvert Crossing
Stream Crossing	1343° 16 668'	122° 46 710'		Repair Needed	Dozer pushed across stream
Helispot	1443° 16 354'	122° 46 698'		Repair Needed	will need to be decompackaged, seeded, and mulched
Road Repair	1543° 16 705'	122° 48 776'		Repair Needed	Staging area dozer patch, may need hand crew repair
Landing or Log Deck	1643° 16 960'	122° 43 670'		Repair Needed	chipper maybe
Staging Area	1743° 16 872'	122° 43 057'		Repair Needed	maybe plow up and reseed against knapweed
Road Repair	1843° 16 937'	122° 43 319'		Repair Needed	Clear out roadside ditches
Dozer Push	1943° 16 973'	122° 43 319'		Repair Needed	burn and area
Landing or Log Deck	2043° 14 244'	122° 56 584'		Repair Needed	deck
Road Repair	2343° 26 988'	122° 47 868'		Repair Needed	Needs Machine Flang
Dozer Push	2443° 23 087'	122° 46 087'		Repair Needed	Big Push in Oak Thicket
Landing or Log Deck	2543° 23 534'	122° 46 680'		Repair Needed	Decked Logs
Stream Crossing	2643° 22 628'	122° 47 051'		Repair Needed	Dozer Stuck in Wet Area Push Out
Staging Area	2743° 27 085'	122° 48 017'		Repair Needed	Large Staging Area
Landing or Log Deck	2943° 27 863'	122° 52 762'		Repair Needed	Log Deck
Landing or Log Deck	3043° 25 046'	122° 46 791'		Repair Needed	Log Deck
Road Repair	3143° 15 847'	122° 43 470'		Repair Needed	Culvert crossing may need to be cleared out
Road Repair	3043° 15 958'	122° 45 503'		Repair Needed	Investigate if from operators
Dozer Push	3343° 17 794'	122° 42 957'		Repair Needed	30 x 15 area
Culvert	3443° 15 988'	122° 43 385'		Repair Needed	burn culvert, exposed hose in road to culvert
Dozer Push	3543° 16 898'	122° 44 121'		Repair Needed	Staging area dozer patch, may need hand crew repair?
Road Repair	3643° 20 530'	122° 44 434'		Repair Needed	pipe segments unclear if burned
Road Repair	3743° 20 570'	122° 44 140'		Repair Needed	chip small brush pile
Road Repair	3843° 16 894'	122° 44 352'		Repair Needed	lines on roadside may need chipper
Road Repair	3943° 16 718'	122° 44 630'		Repair Needed	some roadside debris/wood
Dozer Push	4043° 15 708'	122° 45 447'		Repair Needed	push-out
Clean Up Area	4143° 20 510'	122° 43 534'		Repair Needed	hydraulic spill
Road Repair	4243° 16 499'	122° 46 290'		Repair Needed	dozerline waterbars here
Dozer Push	4343° 17 084'	122° 42 329'		Repair Needed	dozer push-out
Dozer Push	4443° 16 855'	122° 42 110'		Repair Needed	push-out
Dozer Push	4543° 15 782'	122° 45 542'		Repair Needed	dozer push-out
Road Repair	4643° 15 673'	122° 41 923'		Repair Needed	bars soil coming downhill
Stream Crossing	4743° 15 810'	122° 41 863'		Repair Needed	creak cross crossing
Culvert	4843° 16 585'	122° 43 470'		Repair Needed	culvert crossing may need to be cleared out
Landing or Log Deck	4943° 19 392'	122° 48 474'		Repair Needed	decks
Resource Location	5043° 16 402'	122° 44 072'		Repair Needed	slumpy spot in road
Road Repair	5143° 14 084'	122° 54 247'		Repair Needed	start of 080 roped road
Road Repair	5243° 16 547'	122° 44 523'		Repair Needed	small trees roadside chip or fling into black
Road Repair	5343° 20 528'	122° 44 385'		Repair Needed	scratch line around equipment
Resource Location	5443° 20 486'	122° 43 513'		Repair Needed	gravel raveling from filling ind
Road Repair	5543° 16 995'	122° 41 910'		Repair Needed	dozer widened road
Road Repair	5643° 17 138'	122° 41 976'		Repair Needed	dozer widened shoulder
Staging Area	5743° 17 676'	122° 41 262'		Repair Needed	equipment staging turn-around 40 ft wide
Stream Crossing	5843° 16 834'	122° 42 135'		Repair Needed	burnout
Staging Area	5943° 17 002'	122° 42 036'		Repair Needed	turn-out dozer staging possible
Road Repair	6043° 16 261'	122° 41 389'		Repair Needed	dip in road
Landing or Log Deck	6143° 18 924'	122° 49 791'		Repair Needed	no Repair View decks
Stream Crossing	6243° 16 622'	122° 46 587'		Repair Needed	debris pushed into creek will need to be pulled back
Staging Area	6343° 17 183'	122° 43 681'		Repair Needed	proposed clearing for transports
Dozer Push	6443° 16 682'	122° 48 538'		Repair Needed	1st-2nd tanks and pump, needs berm pulled back, reseeded
Road Repair	6543° 14 800'	122° 46 307'		Repair Needed	main travel route, need rock to repair 5' x 6' mat base
Road Repair	6643° 16 350'	122° 46 686'		Repair Needed	road push, need engineer to look at potential drainage issues
Road Repair	6743° 14 813'	122° 46 566'		Repair Needed	muddy dip in road
Staging Area	6843° 14 800'	122° 46 302'		Repair Needed	might need to clean up road after heavy eqpt
Road Repair	6943° 16 550'	122° 44 759'		Repair Needed	Repair Needed
Dozer Push	7043° 16 485'	122° 45 499'		Repair Needed	20' wide push-out needs to be covered
Landing or Log Deck	7143° 15 824'	122° 42 503'		Repair Needed	sub soiling outside road prism, seed and slash/straw
Dozer Push	7243° 16 547'	122° 47 314'		Repair Needed	Push
Road Repair	7343° 27 699'	123° 3 282'		Repair Needed	Debris burning under road bed
Road Repair	7443° 21 244'	122° 44 036'		Repair Needed	Tube grinder, may need loader
Road Repair	7543° 20 471'	122° 44 301'		Repair Needed	water lower turned during back burn

