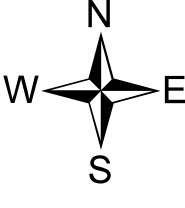


Supression Repair
Archie Creek Fire
OR-UPF-000436
9/30/2020

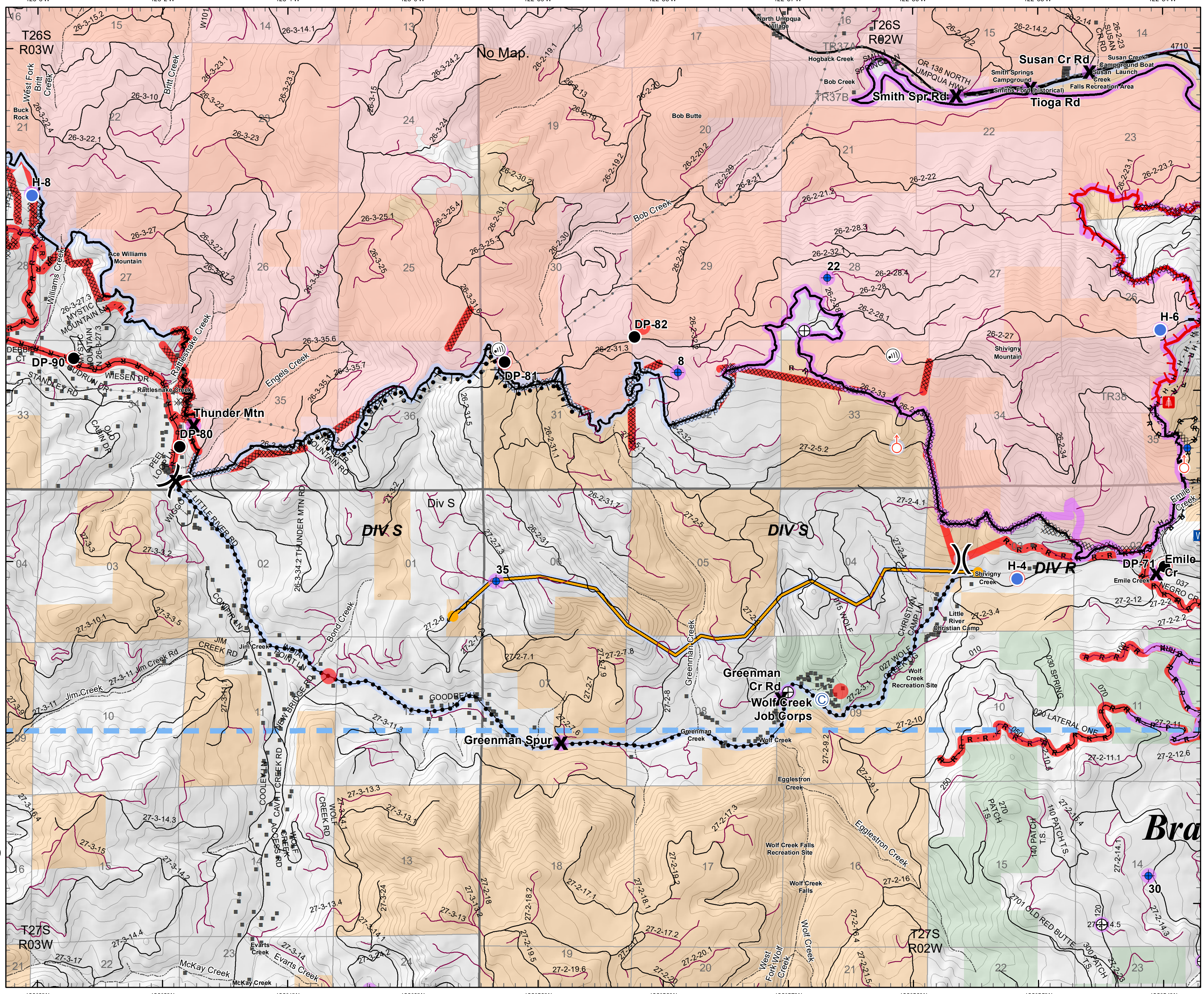
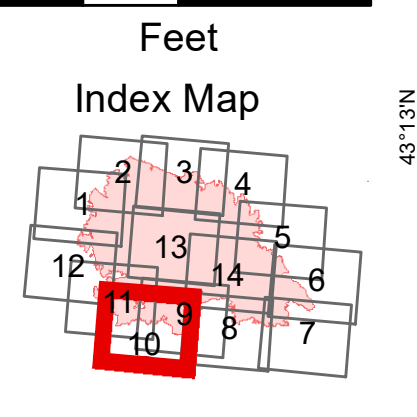
131,542 Acres
Map Page: 10
Div S



- Repair Needed
- No Repair Needed
- Unknown
- C Camp
- X** Closure
- + Dip Site
- Drop Point
- ⚠ Hazard Tree
- Helispot
- I Internet Access
- WX Mobile Weather Unit
- ⬆ Spot Fire
- D Draft Site
- ()** Division Break

- PP&L Transmission Lines
- Repair Needed
- No Repair Needed
- Unknown
- - - Uncontrolled Fire Edge
- - - Contained Line
- XXXX Completed Dozer Line
- H - - - Completed Hand Line
- R - - - Road as Completed Line
- ▣ Completed Burnout
- - - Planned Fire Line
- Planned Secondary Line
- Temporary Flight Restriction
- Management Action Point
- PP&L Transmission Lines
- Other
- Intermediate
- Paved
- All Weather/Dirt
- Streams
- BLM
- USFS

0 2,000 4,000



123°3'W 123°2'W 123°1'W 123°0'W 122°59'W 122°58'W 122°57'W 122°56'W 122°55'W 122°54'W