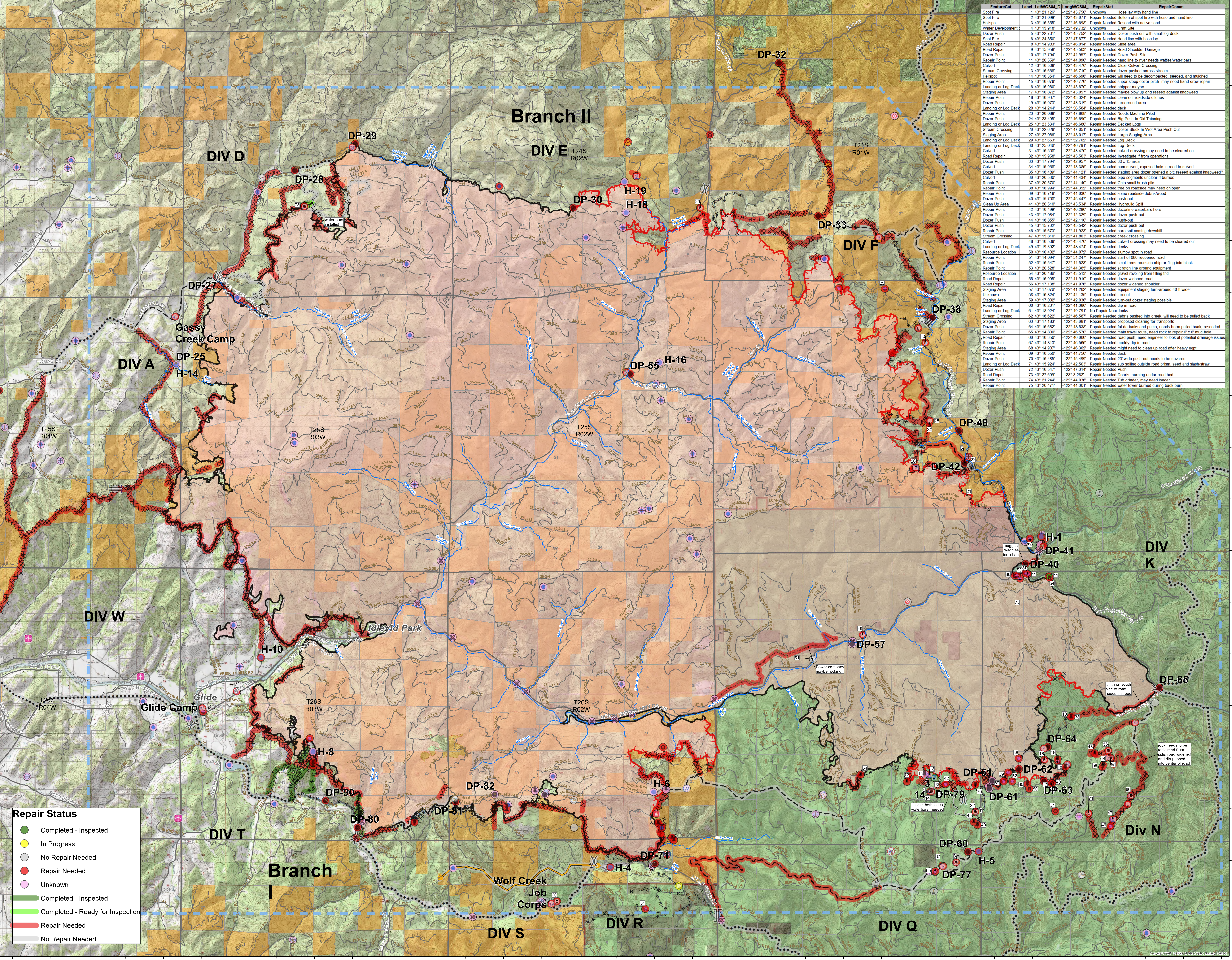


123°11'W 123°10'W 123°9'W 123°8'W 123°7'W 123°6'W 123°5'W 123°4'W 123°3'W 123°2'W 123°1'W 122°59'W 122°58'W 122°57'W 122°56'W 122°55'W 122°54'W 122°53'W 122°52'W 122°51'W 122°50'W 122°49'W 122°48'W 122°47'W 122°46'W 122°45'W 122°44'W 122°43'W 122°42'W 122°41'W 122°40'W 122°39'W



Suppression Repair Map

- Airstrip or Airport
- Camp
- Clean Up Area
- Closure
- Culvert
- Dip Site
- Drop Point
- Dozer Push
- Fire Origin
- Hazard Tree
- Helispot
- Internet Access
- Landing or Log Deck
- Lookout
- Mobile Weather Unit
- Repair Point
- Repeater
- Resource Location
- Road Repair
- Safety Zone
- Staging Area
- Stream Crossing
- Water Source
- Restricted Water Source
- Potential Draft Site
- Value at Risk
- Unknown
- Division Break
- Branch Break
- Uncontrolled Fire Edge
- Contained Line
- Completed Dozer Line
- Completed Hand Line
- Road as Completed Line
- Access or Improved Road
- Completed Burnout
- Planned Fire Line
- Planned Secondary Line
- Temporary Flight Restriction
- Road Repair
- Management Action Point

Repair Status

- Completed - Inspected
- In Progress
- No Repair Needed
- Repair Needed
- Unknown

- ▬ Completed - Inspected
- ▬ Completed - Ready for Inspection
- ▬ Repair Needed
- ▬ No Repair Needed

9/29/2020 @ 2106
NAD 1983 UTM Zone 10N
SA Red Team GIS
Latest Intel:
20200928 @ 1919 hrs

0 1 2 3 4 5 10 Miles

FeatureCat	Label	[Lat]WG84_D	[Long]WG84	RepairStat	RepairComm
Spot Fire	2143° 21 129'	-122° 43 75'		Unknown	Hose lay with hand line
Spot Fire	2143° 21 099'	-122° 43 671'		Repair Needed	Bottom of spot fire with hose and hand line
Helispot	3143° 16 355'	-122° 46 698'		Repair Needed	Reseed with native seed
Water Development	5143° 16 816'	-122° 49 722'		Repair Needed	
Dozer Push	5143° 22 701'	-122° 45 752'		Repair Needed	Dozer push out with small log deck
Spot Fire	6143° 24 850'	-122° 47 677'		Repair Needed	Hand line with hose lay
Road Repair	6143° 14 983'	-122° 46 014'		Repair Needed	Road Repair
Road Repair	6143° 15 958'	-122° 45 503'		Repair Needed	Road Shoulder Damage
Dozer Push	10143° 17 794'	-122° 42 952'		Repair Needed	Dozer Push Site
Repair Point	11143° 20 559'	-122° 44 096'		Repair Needed	Hand line to river needs waffles/water bars
Culvert	12143° 16 598'	-122° 43 470'		Repair Needed	Clear Culvert Crossing
Stream Crossing	13143° 16 668'	-122° 46 710'		Repair Needed	dozer pushed across stream
Helispot	14143° 16 354'	-122° 46 696'		Repair Needed	will need to be decompactised, seeded, and mulched
Repair Point	15143° 16 376'	-122° 48 719'		Repair Needed	dozer pushes dozer patch, may need hand crew repair
Landing or Log Deck	16143° 16 960'	-122° 43 670'		Repair Needed	chipper maybe
Staging Area	17143° 16 872'	-122° 43 052'		Repair Needed	maybe plow up and reseed against knapsack
Repair Point	18143° 16 933'	-122° 43 234'		Repair Needed	clean out roadside ditches
Dozer Push	19143° 16 973'	-122° 43 319'		Repair Needed	burn area
Landing or Log Deck	20143° 14 244'	-122° 56 584'		Repair Needed	deck
Repair Point	21143° 20 988'	-122° 47 868'		Repair Needed	Needs Machine Plad
Repair Point	24143° 23 944'	-122° 46 092'		Repair Needed	Big Push in Oak Thinning
Landing or Log Deck	25143° 23 534'	-122° 46 680'		Repair Needed	Decked Logs
Stream Crossing	26143° 22 628'	-122° 47 051'		Repair Needed	dozer Stuck in Wet Area Push Out
Staging Area	27143° 27 886'	-122° 48 011'		Repair Needed	Log Deck
Landing or Log Deck	29143° 27 863'	-122° 52 762'		Repair Needed	Log Deck
Landing or Log Deck	30143° 25 046'	-122° 46 791'		Repair Needed	Log Deck
Culvert	31143° 16 598'	-122° 43 470'		Repair Needed	Culvert crossing may need to be cleared out
Road Repair	30143° 15 958'	-122° 45 503'		Repair Needed	Investigate if from operators.
Dozer Push	33143° 17 794'	-122° 42 952'		Repair Needed	30 x 15 area
Culvert	34143° 15 988'	-122° 43 385'		Repair Needed	burn culvert, exposed hose in road to culvert
Dozer Push	35143° 16 816'	-122° 44 121'		Repair Needed	dozer pushed dozer patch, may need knapsack?
Culvert	36143° 20 530'	-122° 44 434'		Repair Needed	pipe segments unclear if buried
Repair Point	37143° 20 570'	-122° 44 140'		Repair Needed	Chip small brush pile
Repair Point	38143° 16 598'	-122° 44 352'		Repair Needed	lines on roadside may need chipper
Repair Point	39143° 16 716'	-122° 44 630'		Repair Needed	some roadside debris/wood
Dozer Push	40143° 15 708'	-122° 45 447'		Repair Needed	push-out
Clean Up Area	41143° 20 510'	-122° 43 534'		Repair Needed	hydraulic spill
Repair Point	42143° 16 999'	-122° 46 290'		Repair Needed	dozer/waterbars here
Dozer Push	43143° 17 084'	-122° 42 329'		Repair Needed	dozer push-out
Dozer Push	44143° 16 855'	-122° 42 110'		Repair Needed	push-out
Repair Point	45143° 15 792'	-122° 45 342'		Repair Needed	dozer wash-out
Repair Point	46143° 15 673'	-122° 41 923'		Repair Needed	bars soil coming downhill
Stream Crossing	47143° 15 610'	-122° 41 863'		Repair Needed	dozer creek crossing
Culvert	48143° 16 598'	-122° 43 470'		Repair Needed	Culvert crossing may need to be cleared out
Landing or Log Deck	49143° 19 392'	-122° 48 474'		Repair Needed	decks
Resource Location	50143° 16 402'	-122° 44 072'		Repair Needed	slippy spot in road
Repair Point	51143° 18 094'	-122° 54 247'		Repair Needed	start of 080 reopened road
Repair Point	52143° 16 547'	-122° 44 523'		Repair Needed	small trees roadside chip or fling into black
Repair Point	53143° 20 528'	-122° 44 385'		Repair Needed	scratch line around equipment
Resource Location	54143° 20 498'	-122° 43 513'		Repair Needed	gravel raveling from filling bed
Road Repair	55143° 16 995'	-122° 41 919'		Repair Needed	dozer widened road
Road Repair	56143° 17 138'	-122° 41 976'		Repair Needed	dozer widened shoulder
Staging Area	57143° 17 676'	-122° 41 262'		Repair Needed	equipment staging turn-around 40 ft wide
Staging Area	58143° 16 506'	-122° 42 135'		Repair Needed	turnout
Staging Area	59143° 17 002'	-122° 42 036'		Repair Needed	turn-out dozer staging possible
Road Repair	60143° 16 261'	-122° 41 389'		Repair Needed	dip in road
Landing or Log Deck	61143° 18 094'	-122° 49 791'		Repair Needed	No Repair Needed
Stream Crossing	62143° 16 622'	-122° 46 587'		Repair Needed	debris pushed into creek will need to be pulled back
Staging Area	63143° 17 183'	-122° 43 681'		Repair Needed	proposed clearing for transports
Dozer Push	64143° 16 682'	-122° 48 538'		Repair Needed	oil-ka-banks and pump, needs berm pulled back, reseeded
Repair Point	65143° 14 900'	-122° 48 370'		Repair Needed	main travel route, need rock to repair 6' x 6' mat hole
Road Repair	66143° 16 350'	-122° 46 666'		Repair Needed	road repair, need engineer to look at potential drainage issues
Repair Point	67143° 14 613'	-122° 46 566'		Repair Needed	muddy dip in road
Staging Area	68143° 14 907'	-122° 48 362'		Repair Needed	impl need to clean up road after heavy eqpt
Repair Point	69143° 16 550'	-122° 44 759'		Repair Needed	deck
Dozer Push	70143° 16 485'	-122° 45 499'		Repair Needed	20' wide push-out needs to be covered
Landing or Log Deck	71143° 15 304'	-122° 42 503'		Repair Needed	sub soiling outside road prism, seed and slash/straw
Dozer Push	72143° 16 547'	-122° 47 314'		Repair Needed	brush
Road Repair	73143° 27 699'	-123° 3 282'		Repair Needed	debris burning under road bed
Road Repair	74143° 21 244'	-122° 44 036'		Repair Needed	Tub grinder, may need loader
Repair Point	75143° 20 471'	-122° 44 301'		Repair Needed	water tower turned during back burn

43°31'N 43°30'N 43°29'N 43°28'N 43°27'N 43°26'N 43°25'N 43°24'N 43°23'N 43°22'N 43°21'N 43°20'N 43°19'N 43°18'N 43°17'N 43°16'N 43°15'N 43°14'N

0 1 2 3 4 5 10 Miles