

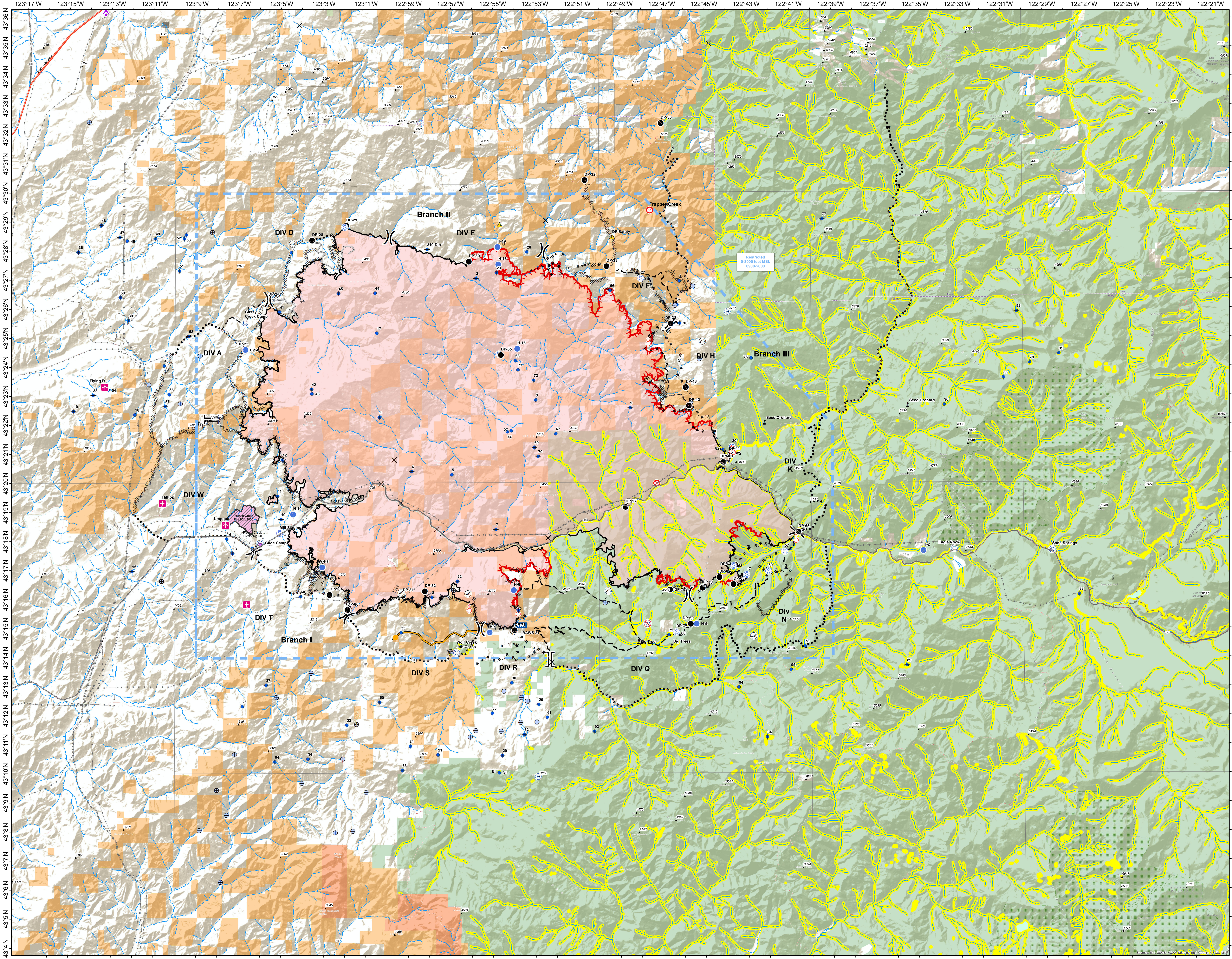
Archie Creek Fire
OR-UPF-000436
09/30/2020



Air Operations Map

131,542 Acres

- Ambulance
- Camp
- Crew
- Drop Point
- Fire Origin
- Fuel Tank
- Helipad
- Medical Aid
- Landing Log Deck
- Liquor
- Utility Meter Line
- Repair Point
- Water
- Water Tank
- Dump Area
- Resource Water Source
- Water Obstruction or Drain Site
- Valve or Risk
- Sector Block
- Branch Block
- Uncontrolled Fire Edge
- Controlled Line
- Completed Clear Line
- H-H Symbol Completed Heat Line
- R-R Symbol Resource Controlled Line
- Access or Improved Road
- Unimproved Road
- Planned Fuel Line
- Planned Boundary Line
- Resource Paper Location
- Resource Location Area
- Resource Line/Perimeter
- HPI/Management Line
- Crew
- Boundary of Admin Unit
- Boundary of Land Management
- Crew of Engineer
- Land Managed by Private
- Local Government
- State Agency
- U.S. Forest Service
- Undetermined
- Waterbody
- Infrastructure



0 1 2 3 4 5 10 Miles

9/29/2020 © 2001
NAD 1983 UTM Zone 10N
SA Red Team GIS
Latest Intel:
20200928 @ 1919



123°17'W 123°15'W 123°13'W 123°11'W 123°9'W 123°7'W 123°5'W 123°3'W 123°1'W 122°59'W 122°57'W 122°55'W 122°53'W 122°51'W 122°49'W 122°47'W 122°45'W 122°43'W 122°41'W 122°39'W 122°37'W 122°35'W 122°33'W 122°31'W 122°29'W 122°27'W 122°25'W 122°23'W 122°21'W

43°4'N 43°5'N 43°6'N 43°7'N 43°8'N 43°9'N 43°10'N 43°11'N 43°12'N 43°13'N 43°14'N 43°15'N 43°16'N 43°17'N 43°18'N 43°19'N 43°20'N 43°21'N 43°22'N 43°23'N 43°24'N 43°25'N 43°26'N 43°27'N 43°28'N 43°29'N 43°30'N 43°31'N 43°32'N 43°33'N 43°34'N 43°35'N 43°36'N