

# IAP Map

Archie Creek Fire

OR-UPF-000436

9/30/2020 0600 - 2000hrs

131,542 Acres

Map Page: 1

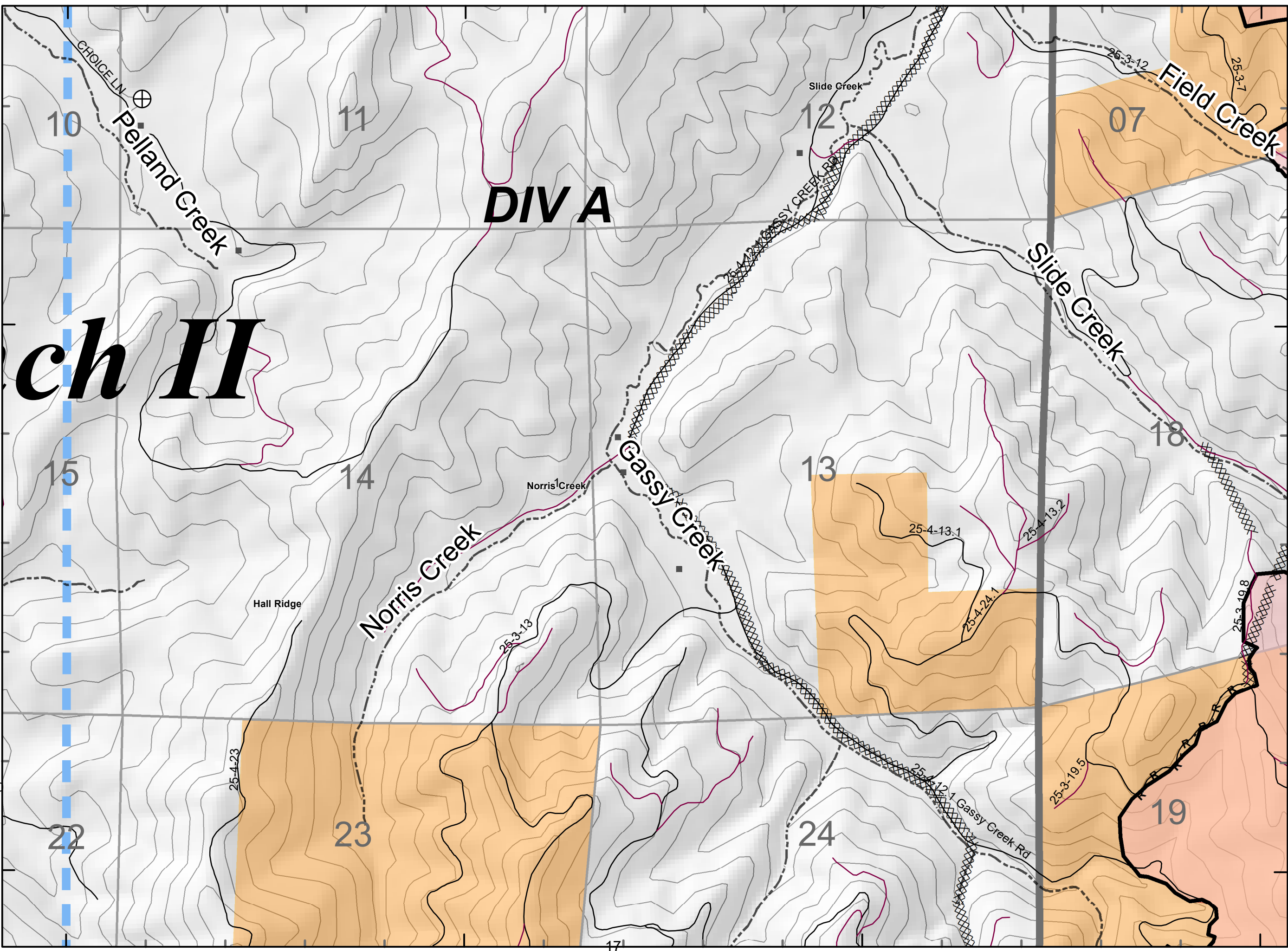
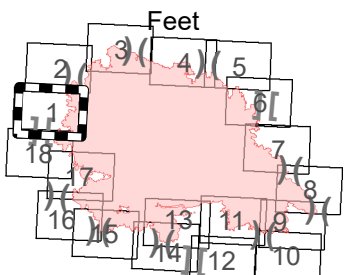
## Div A

- Residence
- Roads
- Streams
- Airstrip or Airport
- Camp
- Closure
- Dip Site
- Drop Point
- Fire Origin
- Hazard Tree
- Helispot
- Internet Access
- Landing or Log Deck
- Lookout
- Mobile Weather Unit
- Repeater
- Safety Zone
- Spot Fire
- Staging Area
- Restricted Water Source
- Water Development or Draft Site
- Value at Risk
- Division Break
- Branch Break
- Uncontrolled Fire Edge
- Contained Line
- Completed Dozer Line
- Completed Hand Line
- Road as Completed Line
- Access or Improved Road
- Completed Burnout
- Planned Fire Line
- Planned Secondary Line
- Temporary Flight Restriction
- Road Repair
- Management Action Point
- Wildfire Daily Fire Perimeter



43°24'N

0 1,000 2,000



123°9'W

123°8'W

123°7'W

123°6'W

123°9'W

123°8'W

123°7'W

123°6'W

43°23'N

43°23'N

43°24'N

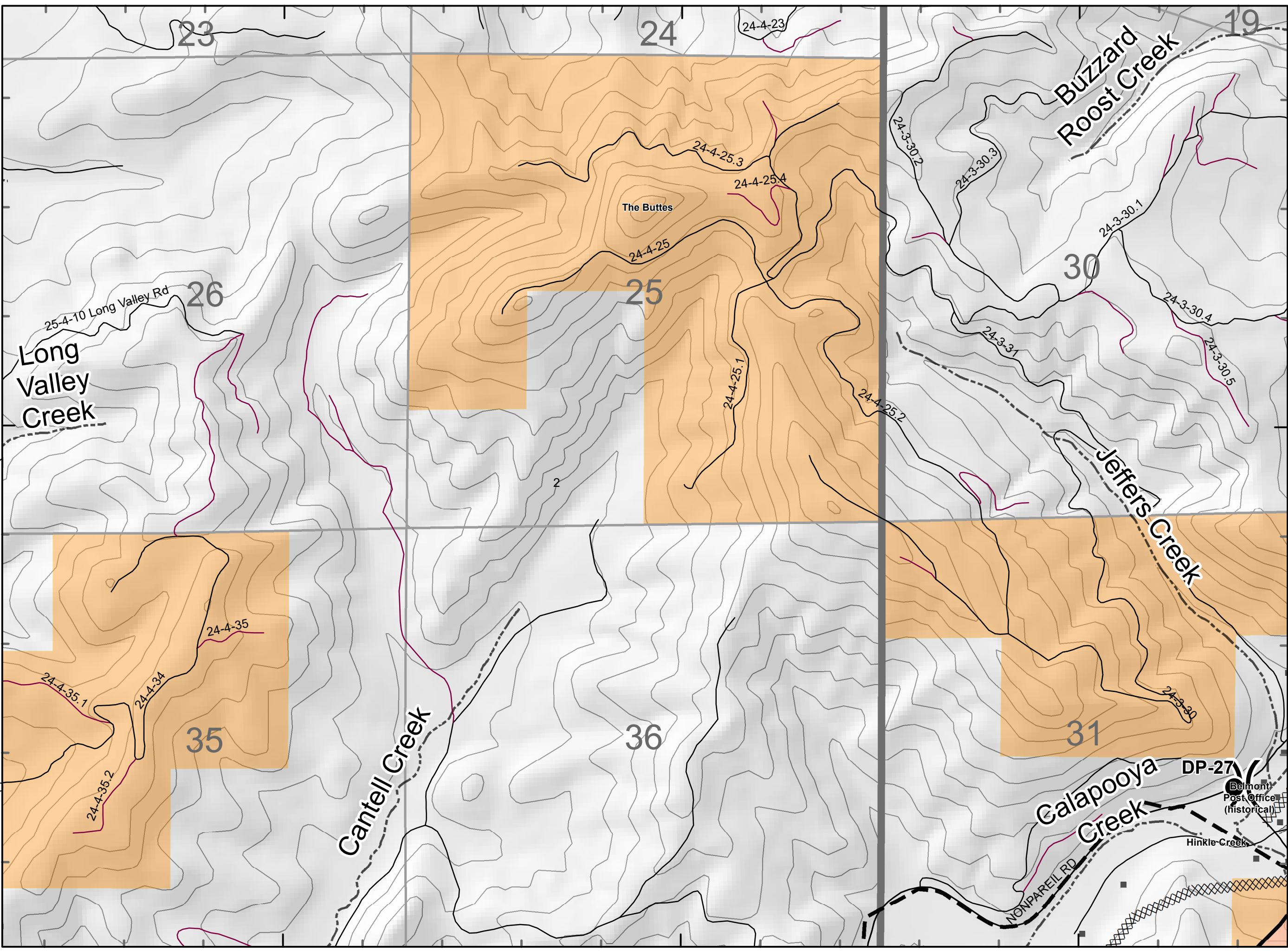
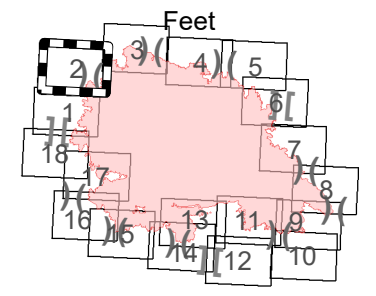
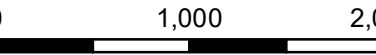
43°24'N



# IAP Map

Archie Creek Fire  
OR-UPF-000436  
9/30/2020 0600 - 2000hrs  
131,542 Acres  
Map Page: 2  
Div A, D

- Residence
- Roads
- Streams
- Airstrip or Airport
- Camp
- Closure
- Dip Site
- Drop Point
- Fire Origin
- Hazard Tree
- Helispot
- Internet Access
- Landing or Log Deck
- Lookout
- Mobile Weather Unit
- Repeater
- Safety Zone
- Spot Fire
- Staging Area
- Restricted Water Source
- Water Development or Draft Site
- Value at Risk
- Division Break
- Branch Break
- Uncontrolled Fire Edge
- Contained Line
- Completed Dozer Line
- Completed Hand Line
- Road as Completed Line
- Access or Improved Road
- Completed Burnout
- Planned Fire Line
- Planned Secondary Line
- Temporary Flight Restriction
- Road Repair
- Management Action Point
- Wildfire Daily Fire Perimeter



Index Map



# IAP Map

Archie Creek Fire

OR-UPF-000436

9/30/2020 0600 - 2000hrs

131,542 Acres

Map Page: 3

## Div D, E

- Residence
- Roads
- Streams
- Airstrip or Airport
- Camp
- Closure
- Dip Site
- Drop Point
- Fire Origin
- Hazard Tree
- Helispot
- Internet Access
- Landing or Log Deck
- Lookout
- Mobile Weather Unit
- Repeater
- Safety Zone
- Spot Fire
- Staging Area
- Restricted Water Source
- Water Development or Draft Site
- Value at Risk
- Division Break
- Branch Break
- Uncontrolled Fire Edge
- Contained Line
- Completed Dozer Line
- Completed Hand Line
- Road as Completed Line
- Access or Improved Road
- Completed Burnout
- Planned Fire Line
- Planned Secondary Line
- Temporary Flight Restriction
- Road Repair
- Management Action Point
- Wildfire Daily Fire Perimeter



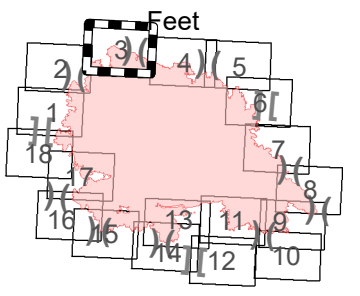
43°29'N

43°29'N

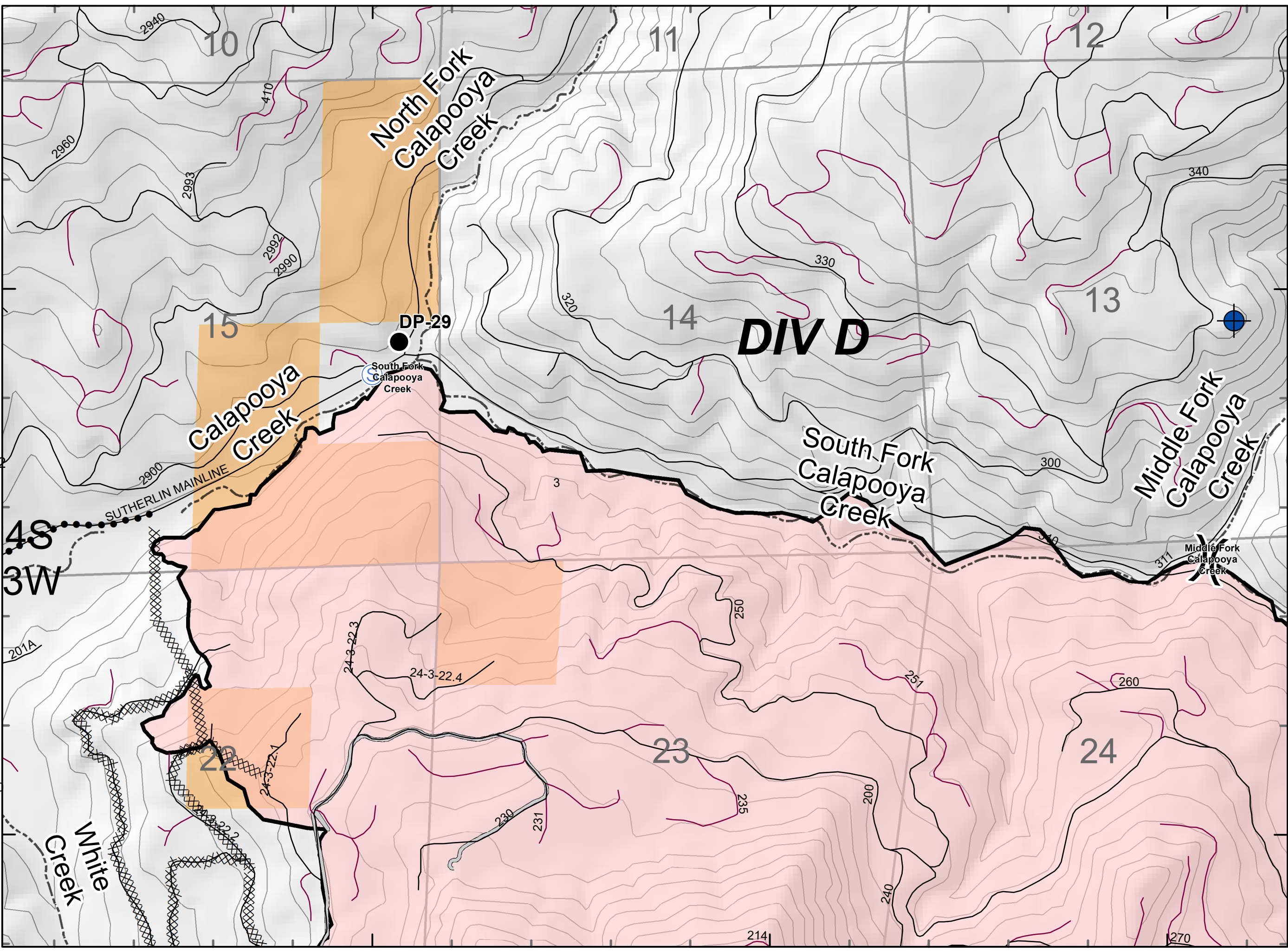
0

1,000

2,000



Index Map



123°2'W

123°1'W

123°0'W

43°29'N

43°29'N

43°28'N



# IAP Map

Archie Creek Fire

OR-UPF-000436

9/30/2020 0600 - 2000hrs

131,542 Acres

Map Page: 4

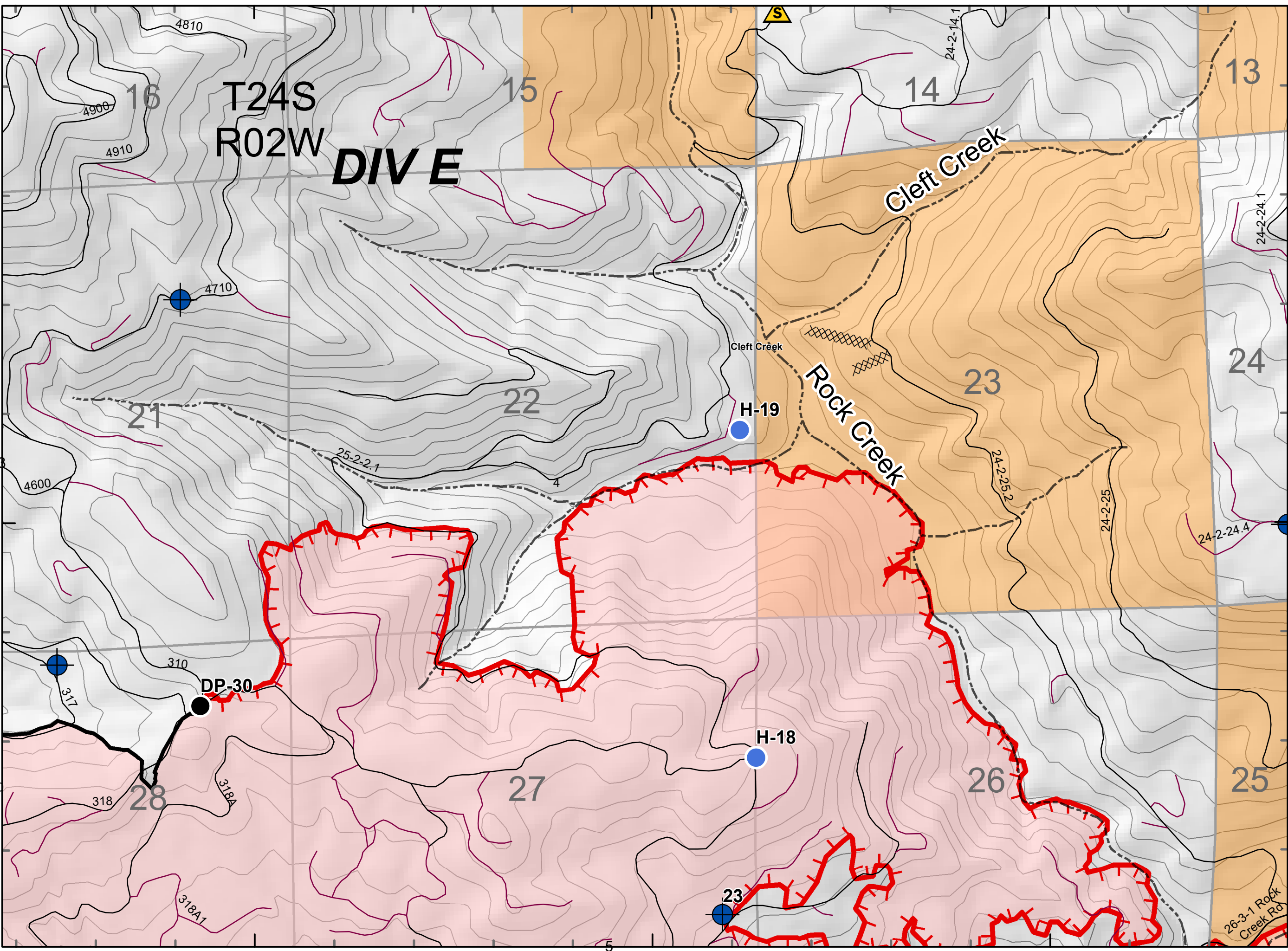
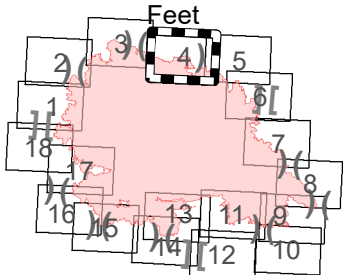
## Div E

- Residence
- Roads
- Streams
- Airstrip or Airport
- Camp
- Closure
- Dip Site
- Drop Point
- Fire Origin
- Hazard Tree
- Helispot
- Internet Access
- Landing or Log Deck
- Lookout
- Mobile Weather Unit
- Repeater
- Safety Zone
- Spot Fire
- Staging Area
- Restricted Water Source
- Water Development or Draft Site
- Value at Risk
- Division Break
- Branch Break
- Uncontrolled Fire Edge
- Contained Line
- Completed Dozer Line
- Completed Hand Line
- Road as Completed Line
- Access or Improved Road
- Completed Burnout
- Planned Fire Line
- Planned Secondary Line
- Temporary Flight Restriction
- Road Repair
- Management Action Point
- Wildfire Daily Fire Perimeter



43°28'N

0 1,000 2,000



122°56'W

122°55'W

122°54'W

26-3-1 Rock Creek Rd



# IAP Map

Archie Creek Fire

OR-UPF-000436

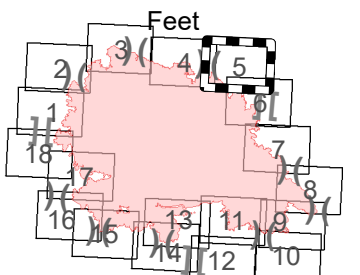
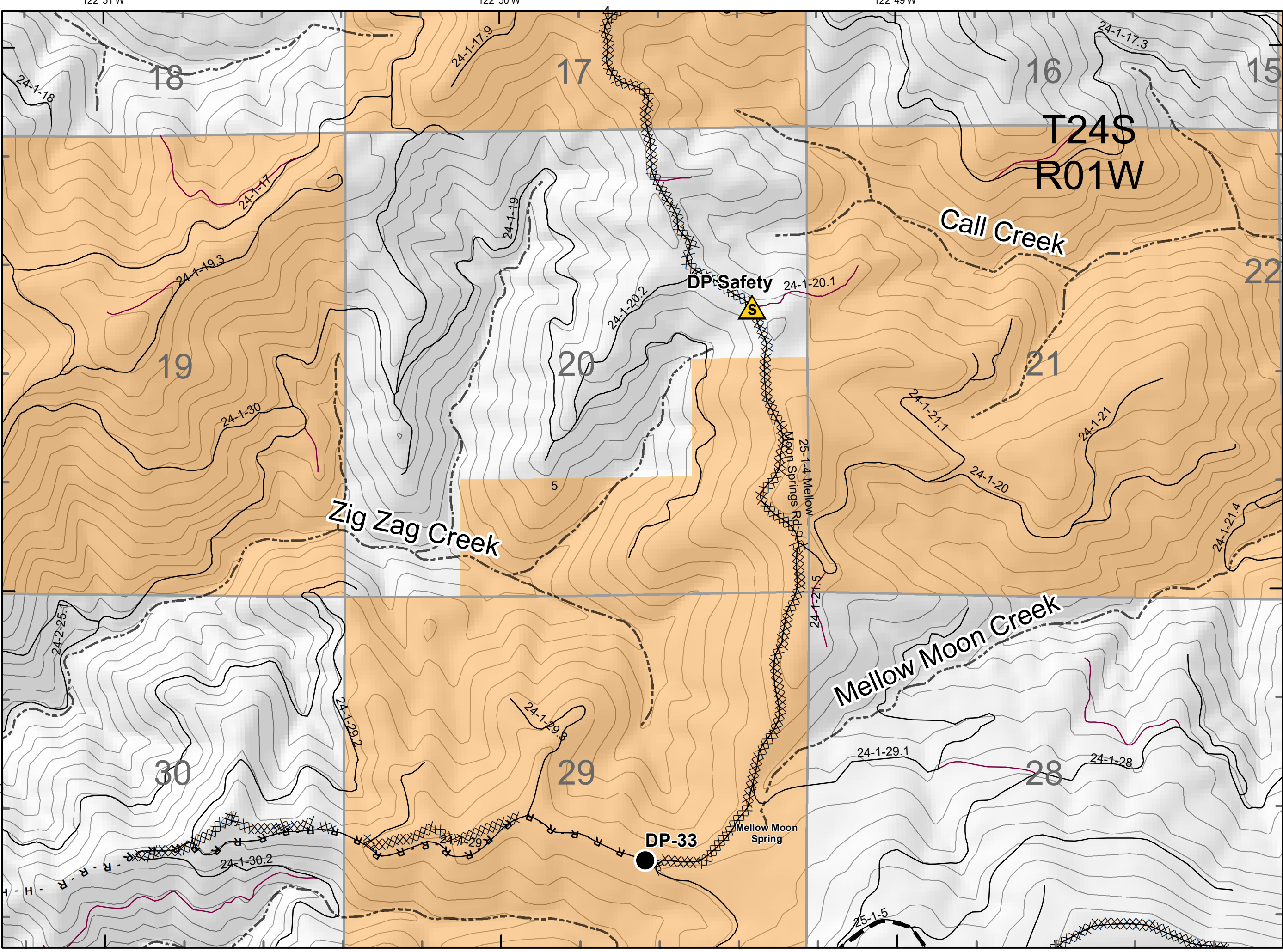
9/30/2020 0600 - 2000hrs

131,542 Acres

Map Page: 5

## Div F

- Residence
- Roads
- Streams
- Airstrip or Airport
- Camp
- Closure
- Dip Site
- Drop Point
- Fire Origin
- Hazard Tree
- Helispot
- Internet Access
- Landing or Log Deck
- Lookout
- Mobile Weather Unit
- Repeater
- Safety Zone
- Spot Fire
- Staging Area
- Restricted Water Source
- Water Development or Draft Site
- Value at Risk
- Division Break
- Branch Break
- Uncontrolled Fire Edge
- Contained Line
- Completed Dozer Line
- Completed Hand Line
- Road as Completed Line
- Access or Improved Road
- Completed Burnout
- Planned Fire Line
- Planned Secondary Line
- Temporary Flight Restriction
- Road Repair
- Management Action Point
- Wildfire Daily Fire Perimeter



Index Map



# IAP Map

Archie Creek Fire

OR-UPF-000436

9/30/2020 0600 - 2000hrs

131,542 Acres

Map Page: 6

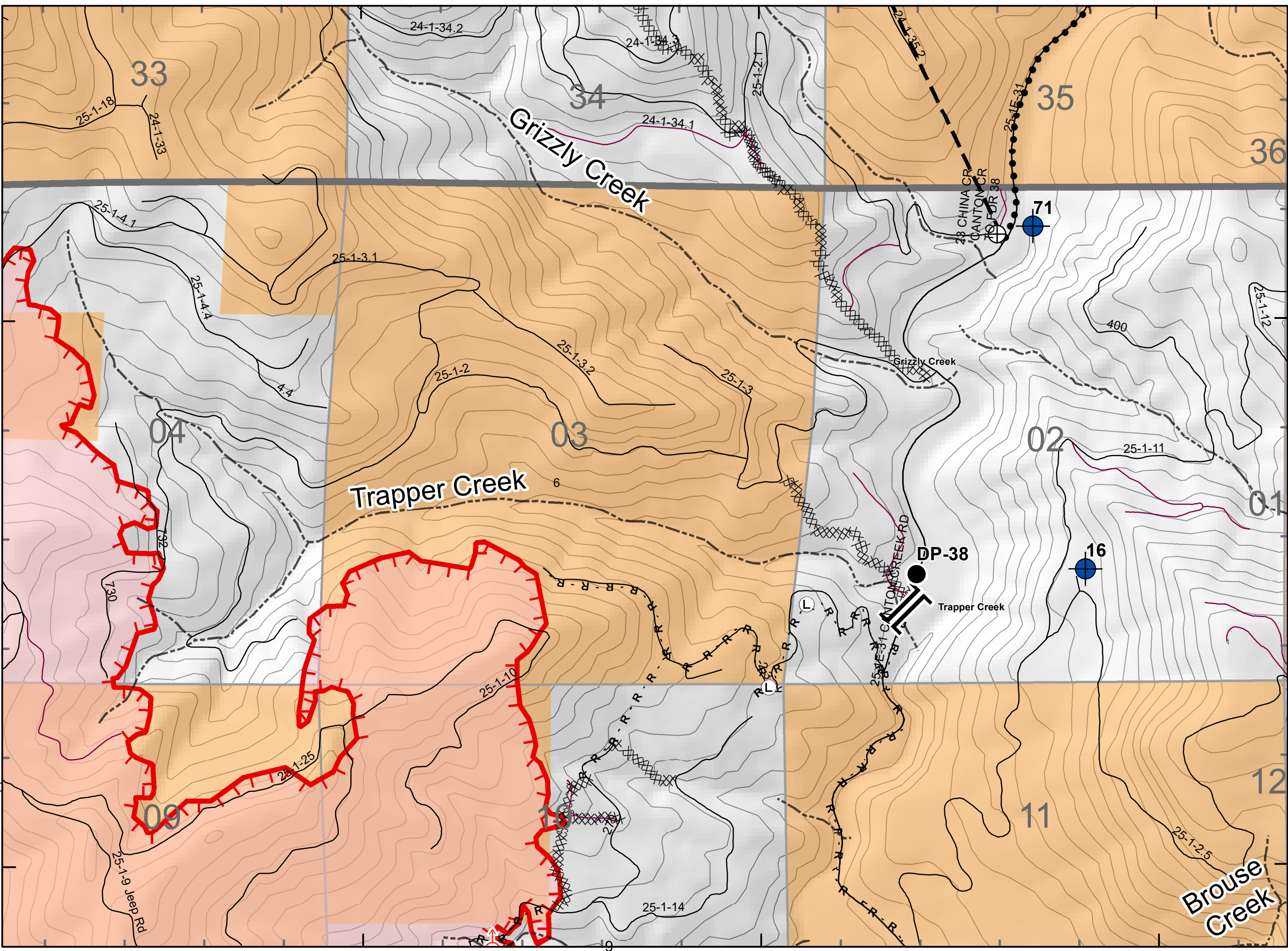
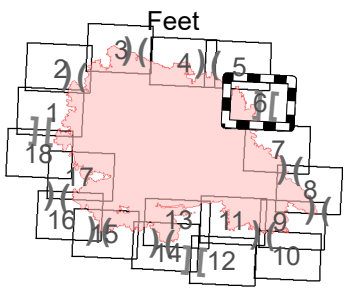
## Div F, H

- Residence
- Roads
- Streams
- Airstrip or Airport
- Camp
- Closure
- Dip Site
- Drop Point
- Fire Origin
- Hazard Tree
- Helispot
- Internet Access
- Landing or Log Deck
- Lookout
- Mobile Weather Unit
- Repeater
- Safety Zone
- Spot Fire
- Staging Area
- Restricted Water Source
- Water Development or Draft Site
- Value at Risk
- Division Break
- Branch Break
- Uncontrolled Fire Edge
- Contained Line
- Completed Dozer Line
- Completed Hand Line
- Road as Completed Line
- Access or Improved Road
- Completed Burnout
- Planned Fire Line
- Planned Secondary Line
- Temporary Flight Restriction
- Road Repair
- Management Action Point
- Wildfire Daily Fire Perimeter



43°26'N

0 1,000 2,000



43°26'N

43°25'N

122°48'W

122°47'W

122°46'W



# IAP Map

Archie Creek Fire

OR-UPF-000436

9/30/2020 0600 - 2000hrs

131,542 Acres

Map Page: 7

## Div H

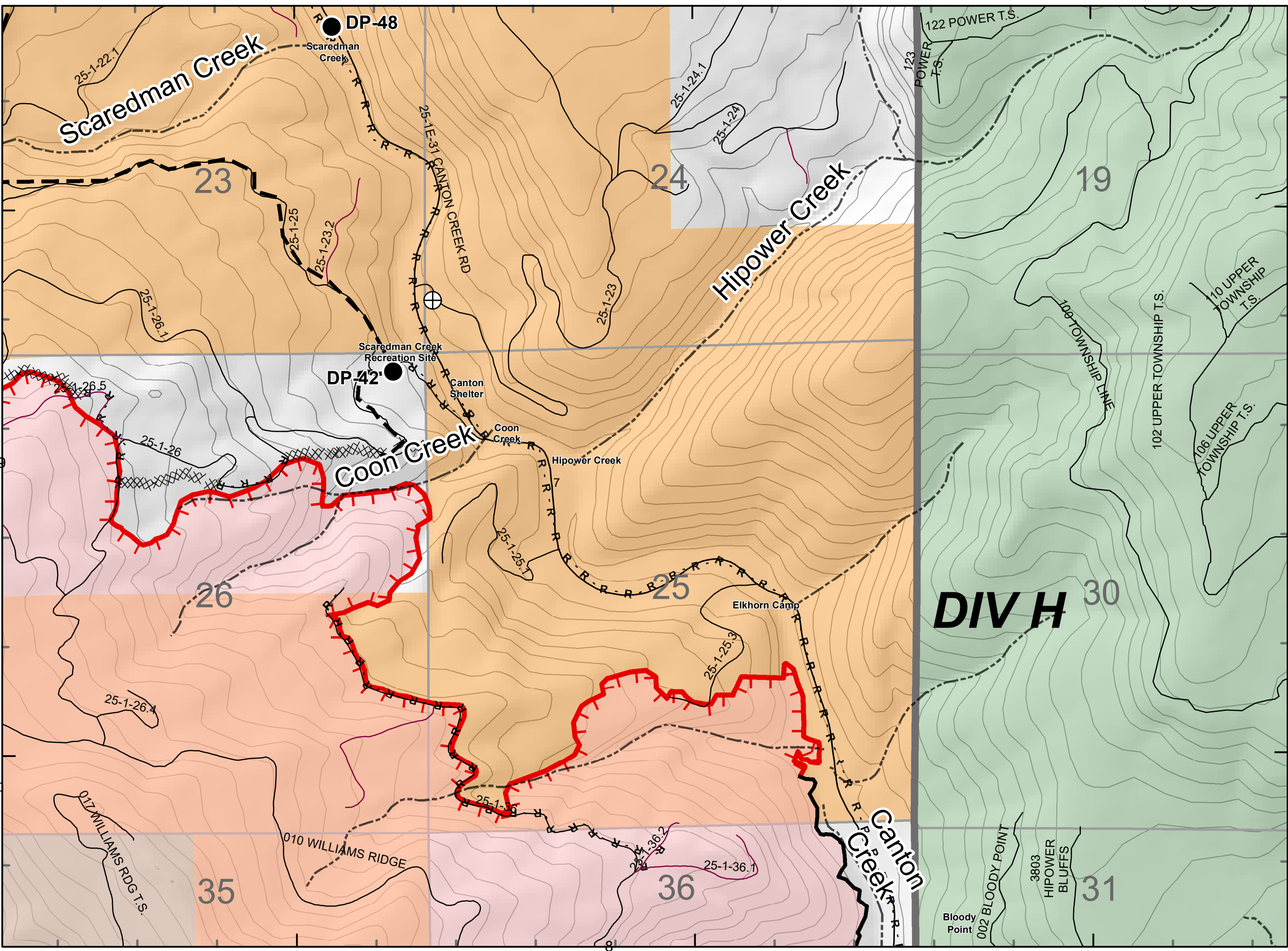
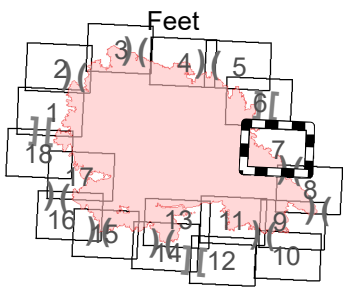
- Residence
- Roads
- Streams
- Airstrip or Airport
- Camp
- Closure
- Dip Site
- Drop Point
- Fire Origin
- Hazard Tree
- Helispot
- Internet Access
- Landing or Log Deck
- Lookout
- Mobile Weather Unit
- Repeater
- Safety Zone
- Spot Fire
- Staging Area
- Restricted Water Source
- Water Development or Draft Site
- Value at Risk
- Division Break
- Branch Break
- Uncontrolled Fire Edge
- Contained Line
- Completed Dozer Line
- Completed Hand Line
- Road as Completed Line
- Access or Improved Road
- Completed Burnout
- Planned Fire Line
- Planned Secondary Line
- Temporary Flight Restriction
- Road Repair
- Management Action Point
- Wildfire Daily Fire Perimeter



43°23'N

43°22'N

0 1,000 2,000



122°46'W

122°45'W

122°44'W

122°46'W

122°45'W

122°44'W

43°23'N

43°23'N

43°22'N

43°22'N



# IAP Map

Archie Creek Fire

OR-UPF-000436

9/30/2020 0600 - 2000hrs

131,542 Acres

Map Page: 8

## Div K

- Residence
- Roads
- Streams
- Airstrip or Airport
- Camp
- Closure
- Dip Site
- Drop Point
- Fire Origin
- Hazard Tree
- Helispot
- Internet Access
- Landing or Log Deck
- Lookout
- Mobile Weather Unit
- Repeater
- Safety Zone
- Spot Fire
- Staging Area
- Restricted Water Source
- Water Development or Draft Site
- Value at Risk
- Division Break
- Branch Break
- Uncontrolled Fire Edge
- Contained Line
- Completed Dozer Line
- Completed Hand Line
- Road as Completed Line
- Access or Improved Road
- Completed Burnout
- Planned Fire Line
- Planned Secondary Line
- Temporary Flight Restriction
- Road Repair
- Management Action Point
- Wildfire Daily Fire Perimeter



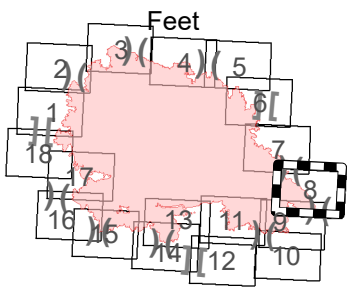
43°20'N

0

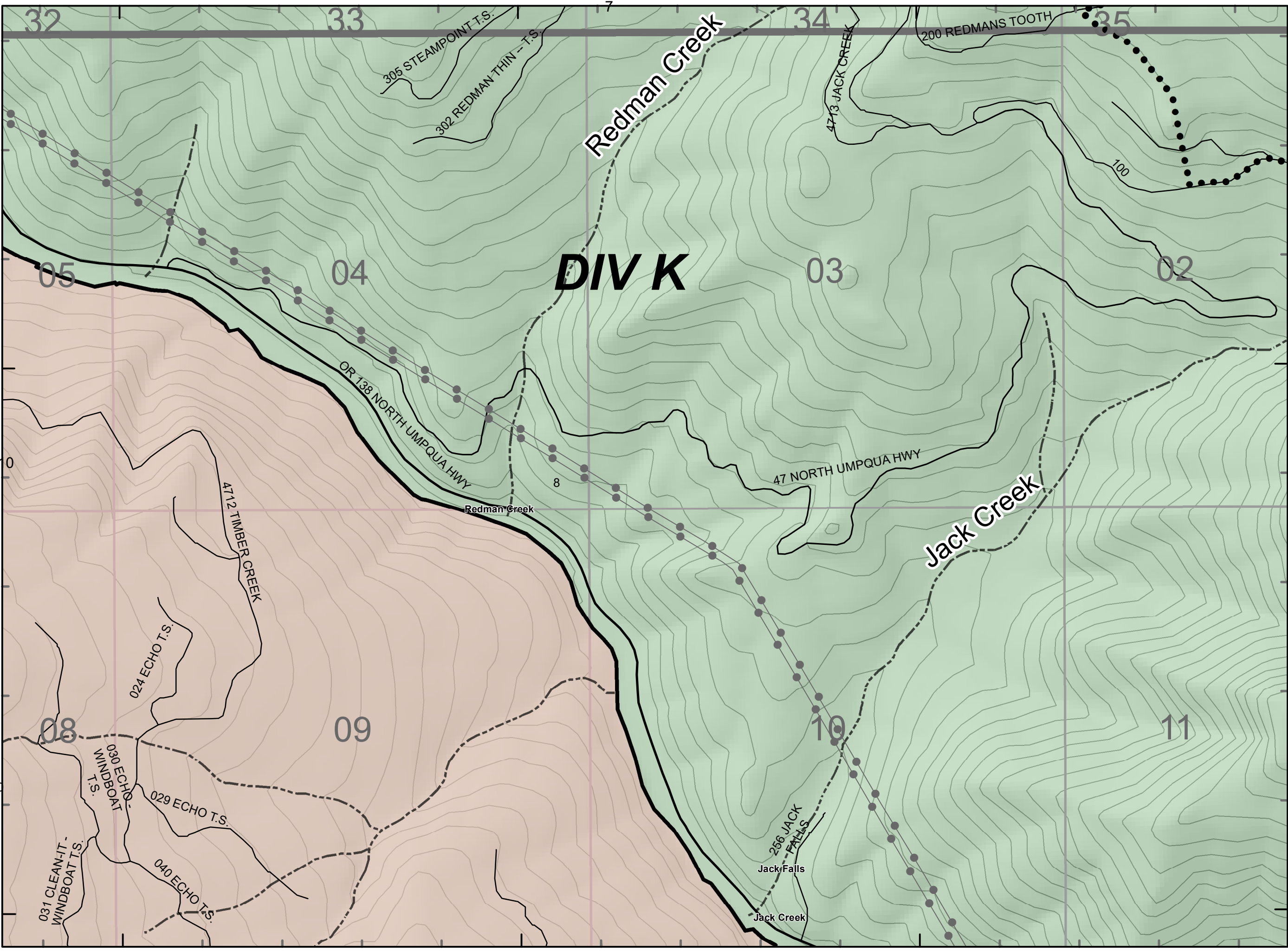
0

1,000

2,000



Index Map



122°43'W

122°42'W

122°41'W

43°20'N

43°20'N

43°19'N



# IAP Map

Archie Creek Fire

OR-UPF-000436

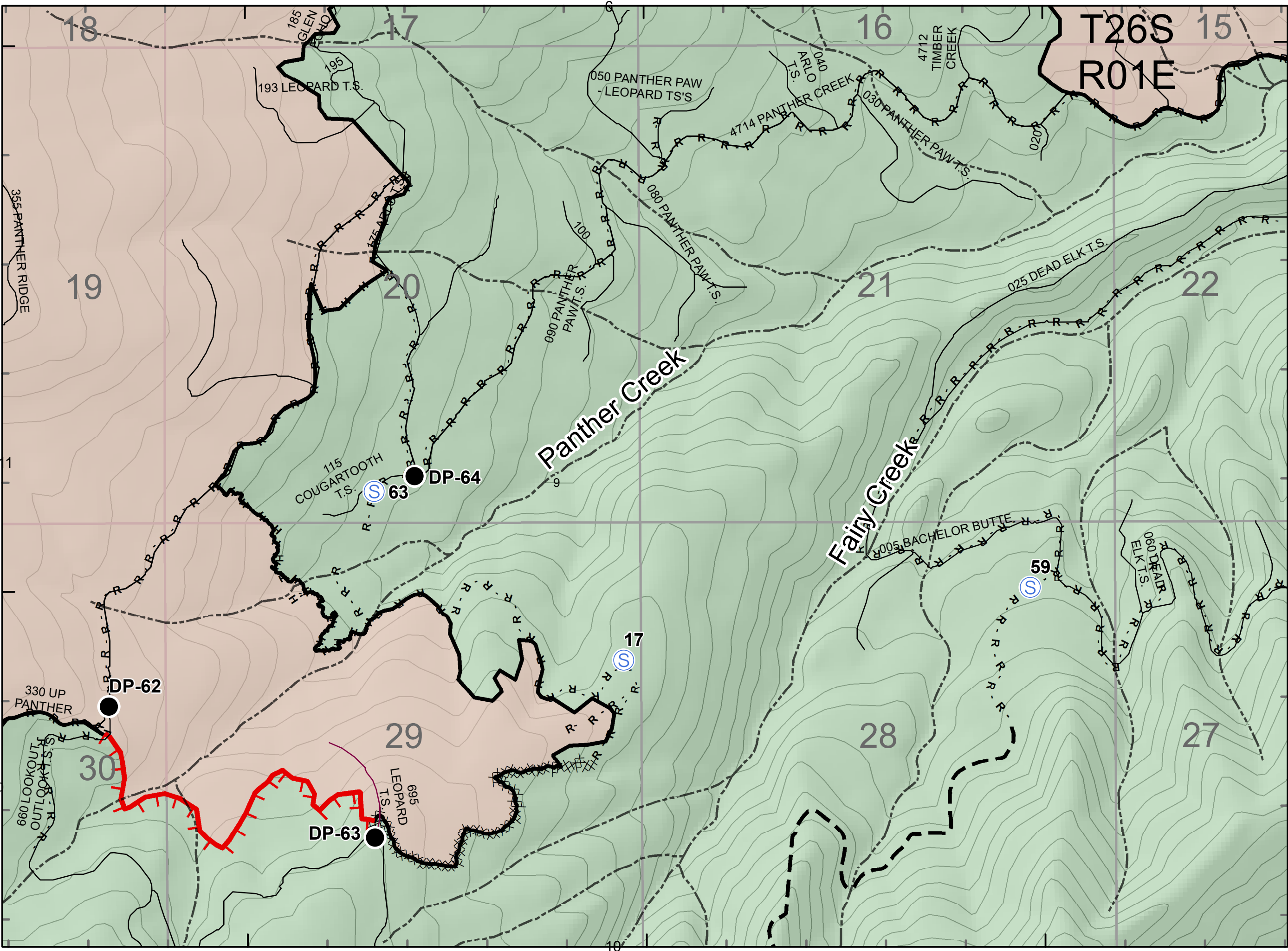
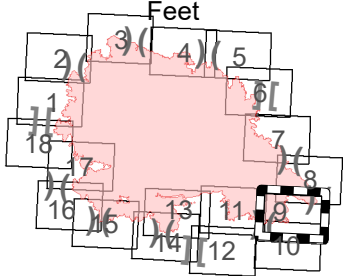
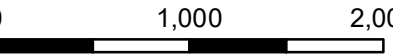
9/30/2020 0600 - 2000hrs

131,542 Acres

Map Page: 9

## Div N

- Residence
- Roads
- Streams
- Airstrip or Airport
- Camp
- Closure
- Dip Site
- Drop Point
- Fire Origin
- Hazard Tree
- Helispot
- Internet Access
- Landing or Log Deck
- Lookout
- Mobile Weather Unit
- Repeater
- Safety Zone
- Spot Fire
- Staging Area
- Restricted Water Source
- Water Development or Draft Site
- Value at Risk
- Division Break
- Branch Break
- Uncontrolled Fire Edge
- Contained Line
- Completed Dozer Line
- Completed Hand Line
- R - Road as Completed Line
- Access or Improved Road
- Completed Burnout
- Planned Fire Line
- Planned Secondary Line
- Temporary Flight Restriction
- Road Repair
- Management Action Point
- Wildfire Daily Fire Perimeter



Index Map

122°44'W

122°43'W

122°42'W



# IAP Map

Archie Creek Fire

OR-UPF-000436

9/30/2020 0600 - 2000hrs

131,542 Acres

Map Page: 10

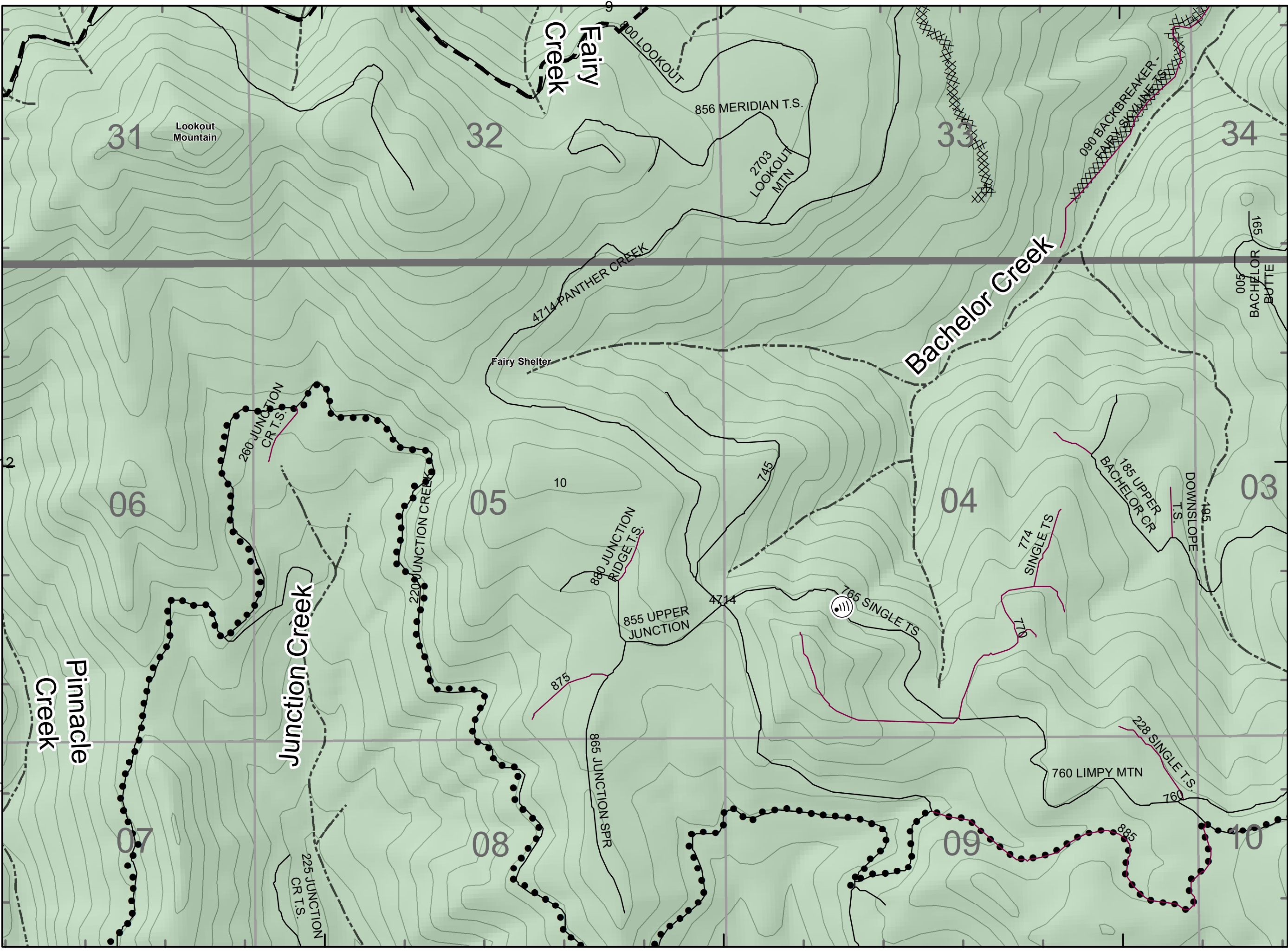
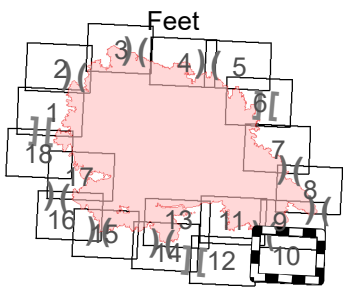
## Div N

- Residence
- Roads
- Streams
- Airstrip or Airport
- Camp
- Closure
- Dip Site
- Drop Point
- Fire Origin
- Hazard Tree
- Helispot
- Internet Access
- Landing or Log Deck
- Lookout
- Mobile Weather Unit
- Repeater
- Safety Zone
- Spot Fire
- Staging Area
- Restricted Water Source
- Water Development or Draft Site
- Value at Risk
- Division Break
- Branch Break
- Uncontrolled Fire Edge
- Contained Line
- Completed Dozer Line
- Completed Hand Line
- Road as Completed Line
- Access or Improved Road
- Completed Burnout
- Planned Fire Line
- Planned Secondary Line
- Temporary Flight Restriction
- Road Repair
- Management Action Point
- Wildfire Daily Fire Perimeter



43° 15' N

0 1,000 2,000



122° 44' W

122° 43' W

122° 42' W

98° 15' W



# IAP Map

Archie Creek Fire

OR-UPF-000436

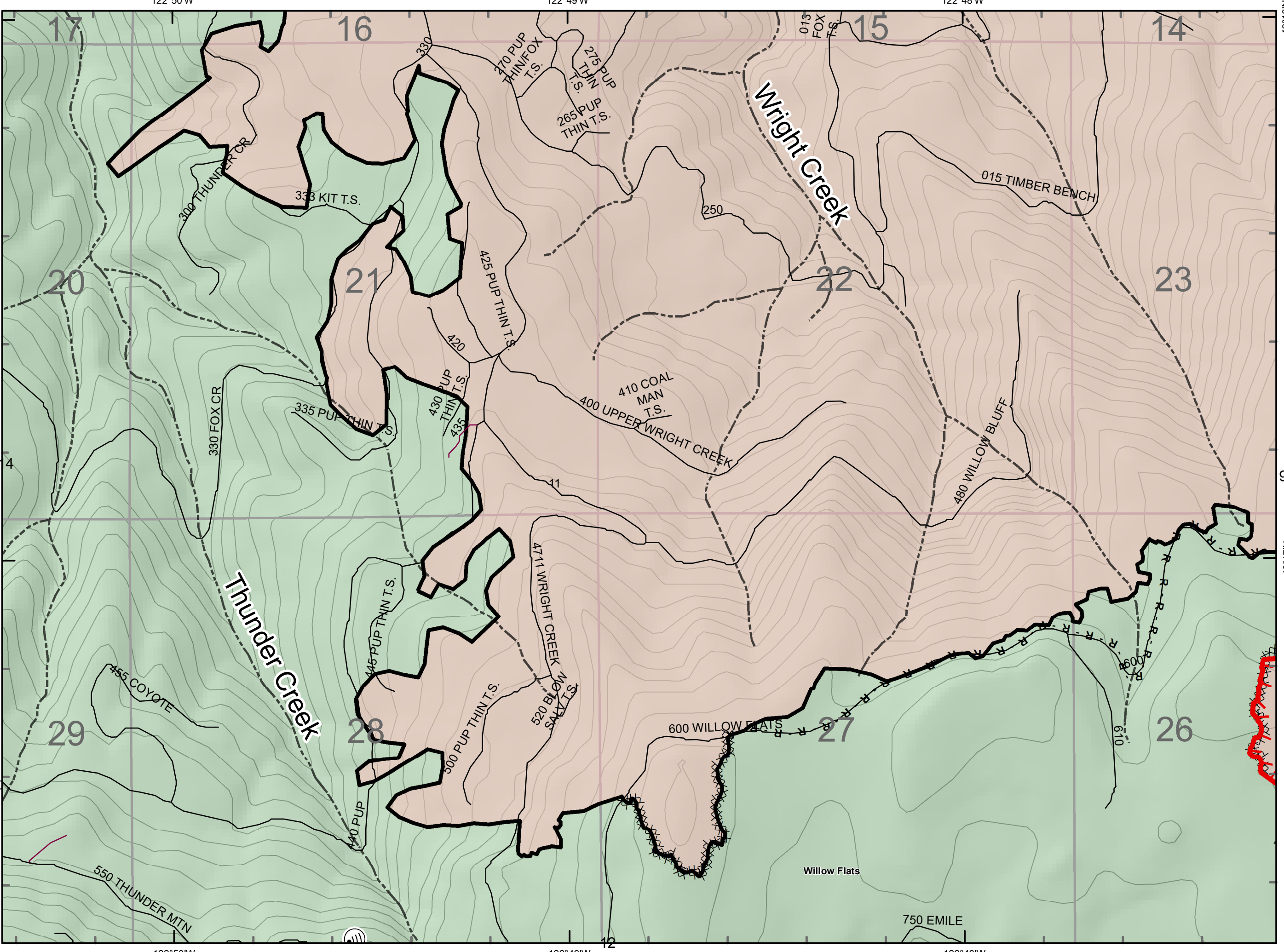
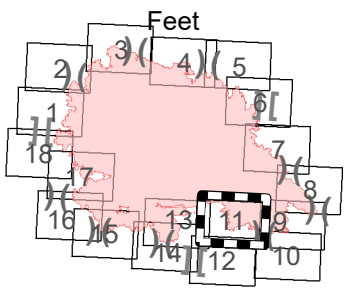
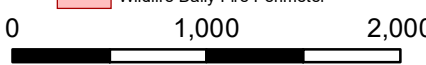
9/30/2020 0600 - 2000hrs

131,542 Acres

Map Page: 11

## Div Q

- Residence
- Roads
- Streams
- Airstrip or Airport
- Camp
- Closure
- Dip Site
- Drop Point
- Fire Origin
- Hazard Tree
- Helispot
- Internet Access
- Landing or Log Deck
- Lookout
- Mobile Weather Unit
- Repeater
- Safety Zone
- Spot Fire
- Staging Area
- Restricted Water Source
- Water Development or Draft Site
- Value at Risk
- Division Break
- Branch Break
- Uncontrolled Fire Edge
- Contained Line
- Completed Dozer Line
- Completed Hand Line
- Road as Completed Line
- Access or Improved Road
- Completed Burnout
- Planned Fire Line
- Planned Secondary Line
- Temporary Flight Restriction
- Road Repair
- Management Action Point
- Wildfire Daily Fire Perimeter



Index Map



# IAP Map

Archie Creek Fire

OR-UPF-000436

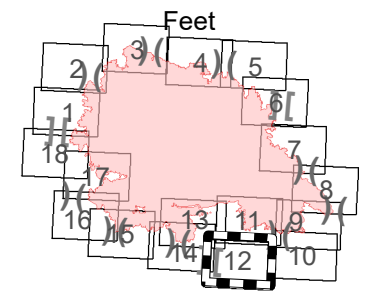
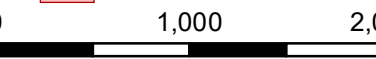
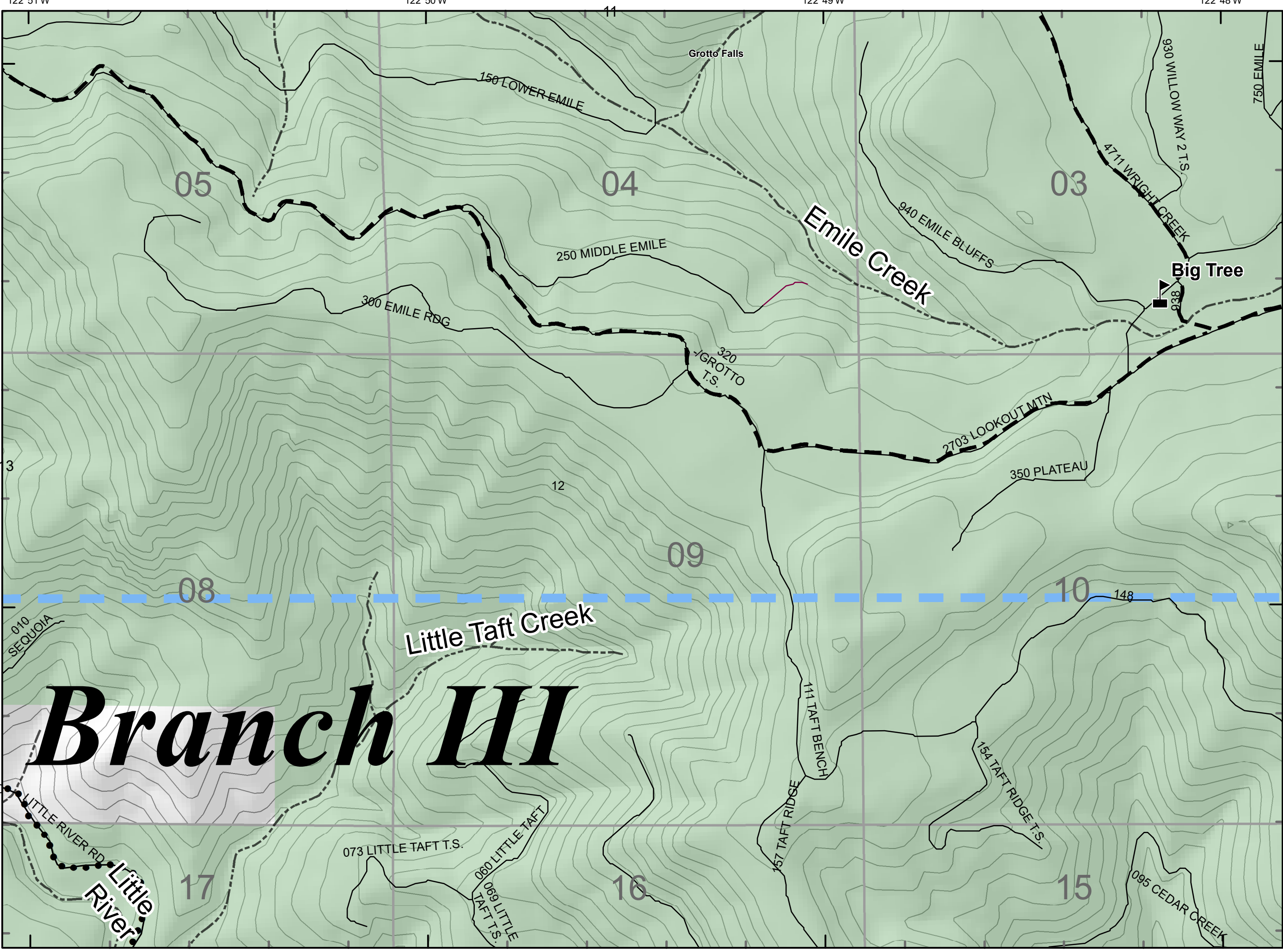
9/30/2020 0600 - 2000hrs

131,542 Acres

Map Page: 12

## Div Q

- Residence
- Roads
- Streams
- Airstrip or Airport
- Camp
- Closure
- Dip Site
- Drop Point
- Fire Origin
- Hazard Tree
- Helispot
- Internet Access
- Landing or Log Deck
- Lookout
- Mobile Weather Unit
- Repeater
- Safety Zone
- Spot Fire
- Staging Area
- Restricted Water Source
- Water Development or Draft Site
- Value at Risk
- Division Break
- Branch Break
- Uncontrolled Fire Edge
- Contained Line
- Completed Dozer Line
- Completed Hand Line
- Road as Completed Line
- Access or Improved Road
- Completed Burnout
- Planned Fire Line
- Planned Secondary Line
- Temporary Flight Restriction
- Road Repair
- Management Action Point
- Wildfire Daily Fire Perimeter



Index Map



# IAP Map

Archie Creek Fire

OR-UPF-000436

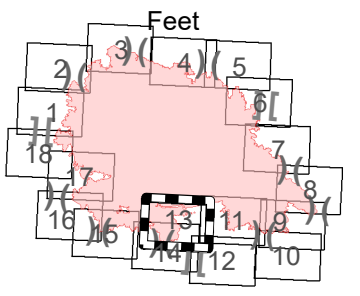
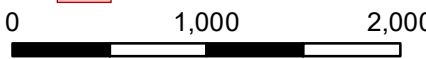
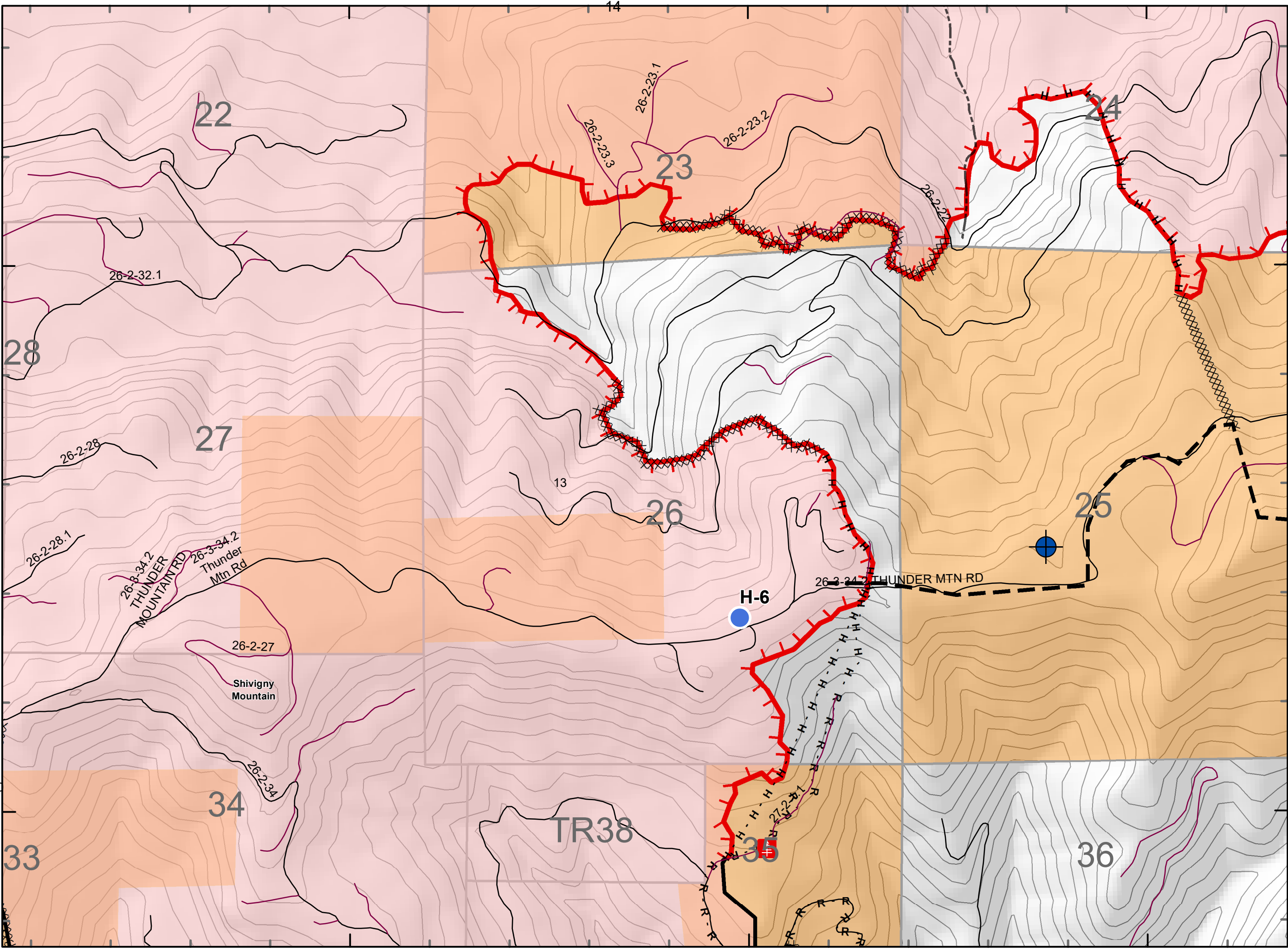
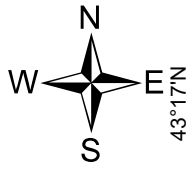
9/30/2020 0600 - 2000hrs

131,542 Acres

Map Page: 13

## Div R, S

- Residence
- Roads
- Streams
- Airstrip or Airport
- Camp
- Closure
- Dip Site
- Drop Point
- Fire Origin
- Hazard Tree
- Helispot
- Internet Access
- Landing or Log Deck
- Lookout
- Mobile Weather Unit
- Repeater
- Safety Zone
- Spot Fire
- Staging Area
- Restricted Water Source
- Water Development or Draft Site
- Value at Risk
- Division Break
- Branch Break
- Uncontrolled Fire Edge
- Contained Line
- Completed Dozer Line
- Completed Hand Line
- Road as Completed Line
- Access or Improved Road
- Completed Burnout
- Planned Fire Line
- Planned Secondary Line
- Temporary Flight Restriction
- Road Repair
- Management Action Point
- Wildfire Daily Fire Perimeter



Index Map







# IAP Map

Archie Creek Fire

OR-UPF-000436

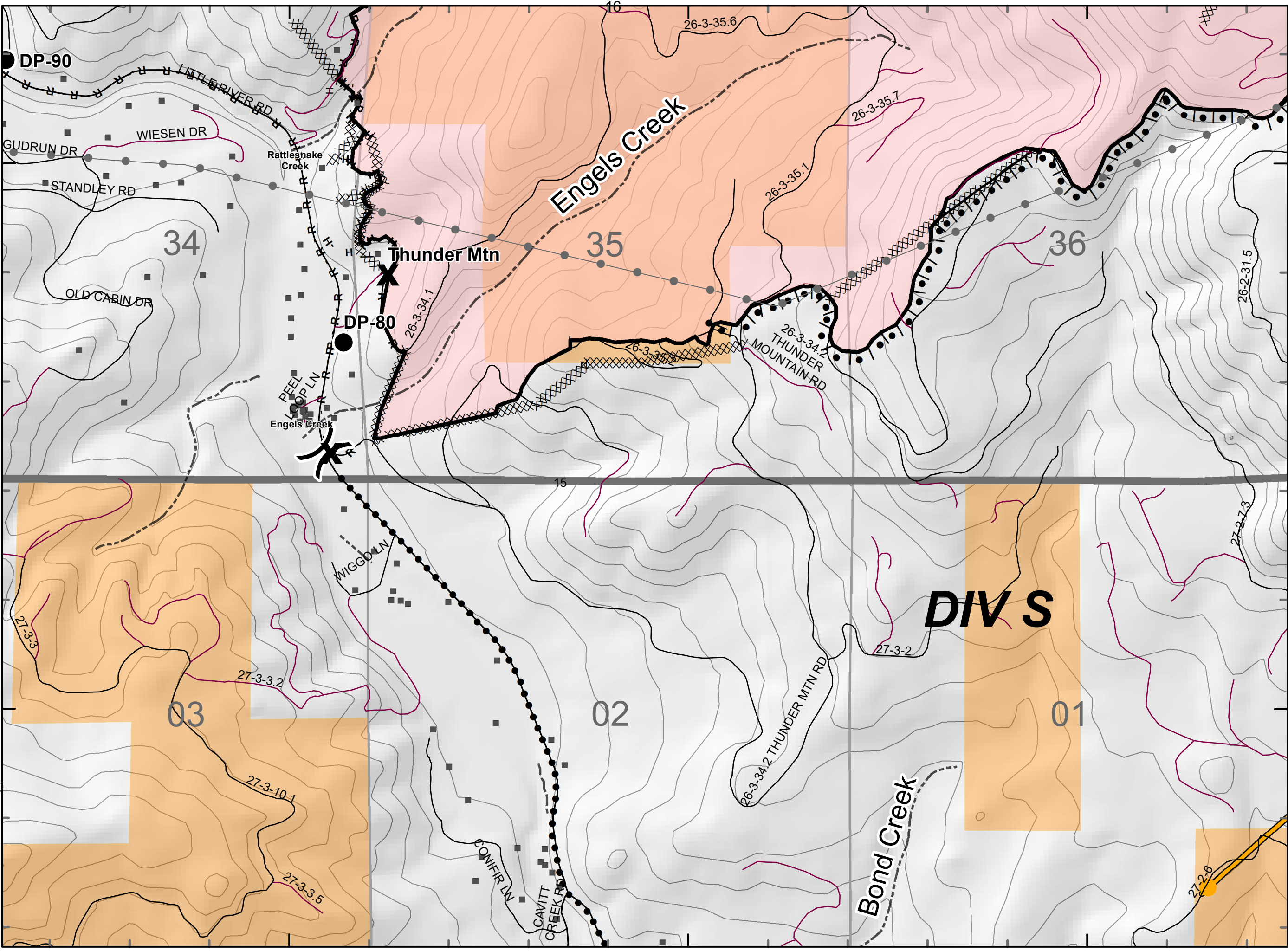
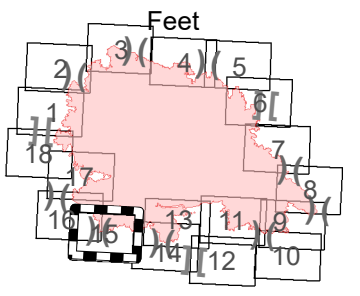
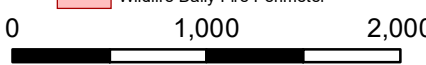
9/30/2020 0600 - 2000hrs

131,542 Acres

Map Page: 15

## Div S, T

- Residence
- Roads
- Streams
- Airstrip or Airport
- Camp
- Closure
- Dip Site
- Drop Point
- Fire Origin
- Hazard Tree
- Helispot
- Internet Access
- Landing or Log Deck
- Lookout
- Mobile Weather Unit
- Repeater
- Safety Zone
- Spot Fire
- Staging Area
- Restricted Water Source
- Water Development or Draft Site
- Value at Risk
- Division Break
- Branch Break
- Uncontrolled Fire Edge
- Contained Line
- Completed Dozer Line
- Completed Hand Line
- Road as Completed Line
- Access or Improved Road
- Completed Burnout
- Planned Fire Line
- Planned Secondary Line
- Temporary Flight Restriction
- Road Repair
- Management Action Point
- Wildfire Daily Fire Perimeter



Index Map



# IAP Map

Archie Creek Fire

OR-UPF-000436

9/30/2020 0600 - 2000hrs

131,542 Acres

Map Page: 16

## Div T

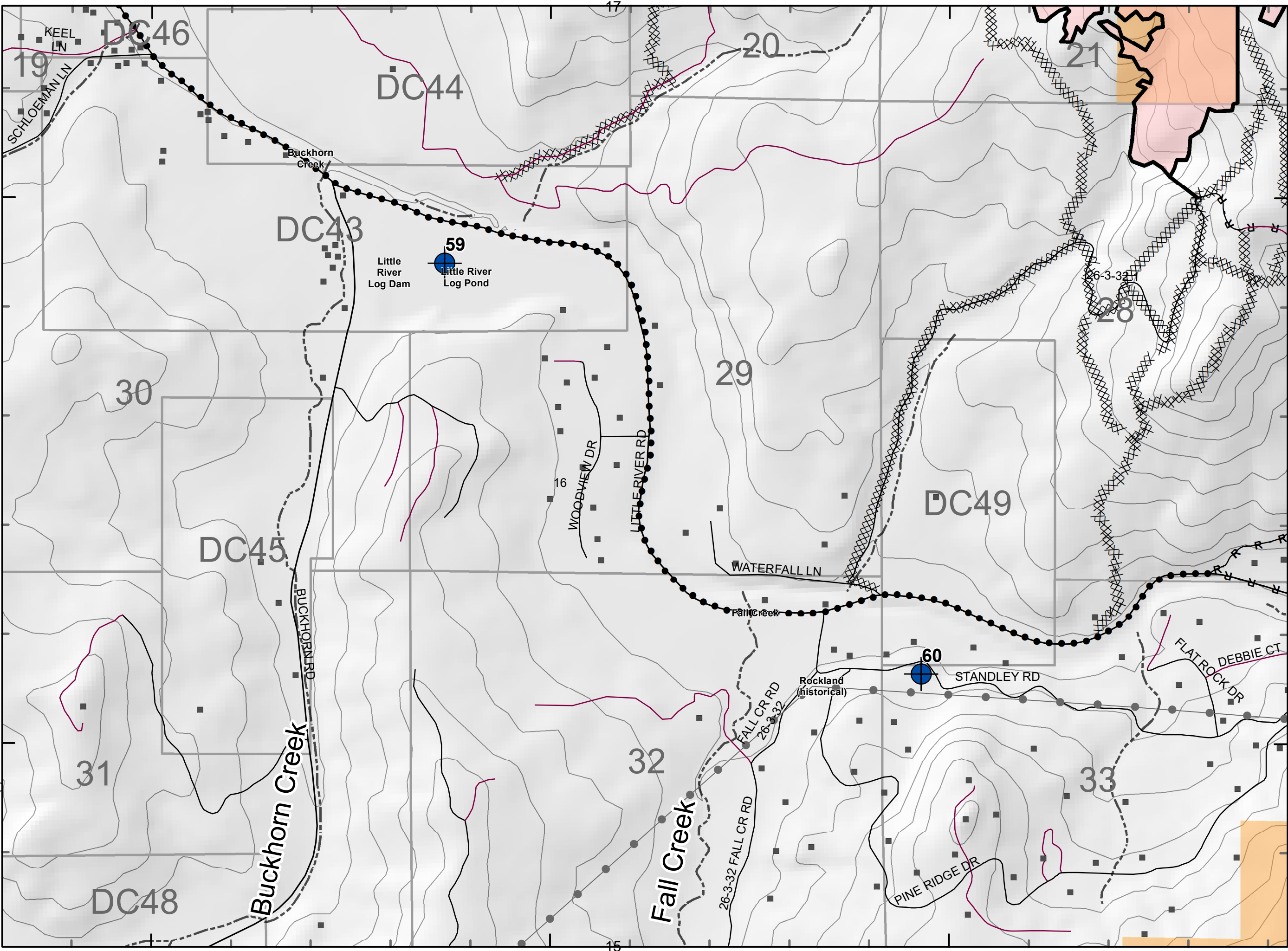
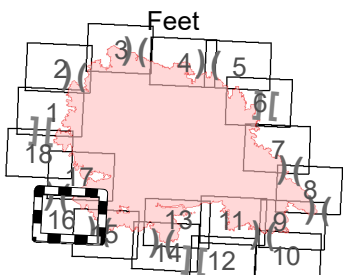
- Residence
- Roads
- Streams
- Airstrip or Airport
- Camp
- Closure
- Dip Site
- Drop Point
- Fire Origin
- Hazard Tree
- Helispot
- Internet Access
- Landing or Log Deck
- Lookout
- Mobile Weather Unit
- Repeater
- Safety Zone
- Spot Fire
- Staging Area
- Restricted Water Source
- Water Development or Draft Site
- Value at Risk
- Division Break
- Branch Break
- Uncontrolled Fire Edge
- Contained Line
- Completed Dozer Line
- Completed Hand Line
- Road as Completed Line
- Access or Improved Road
- Completed Burnout
- Planned Fire Line
- Planned Secondary Line
- Temporary Flight Restriction
- Road Repair
- Management Action Point
- Wildfire Daily Fire Perimeter



43°17'N

43°16'N

0 1,000 2,000



43°17'N

43°16'N

0 1,000 2,000

Index Map

123°6'W

123°5'W

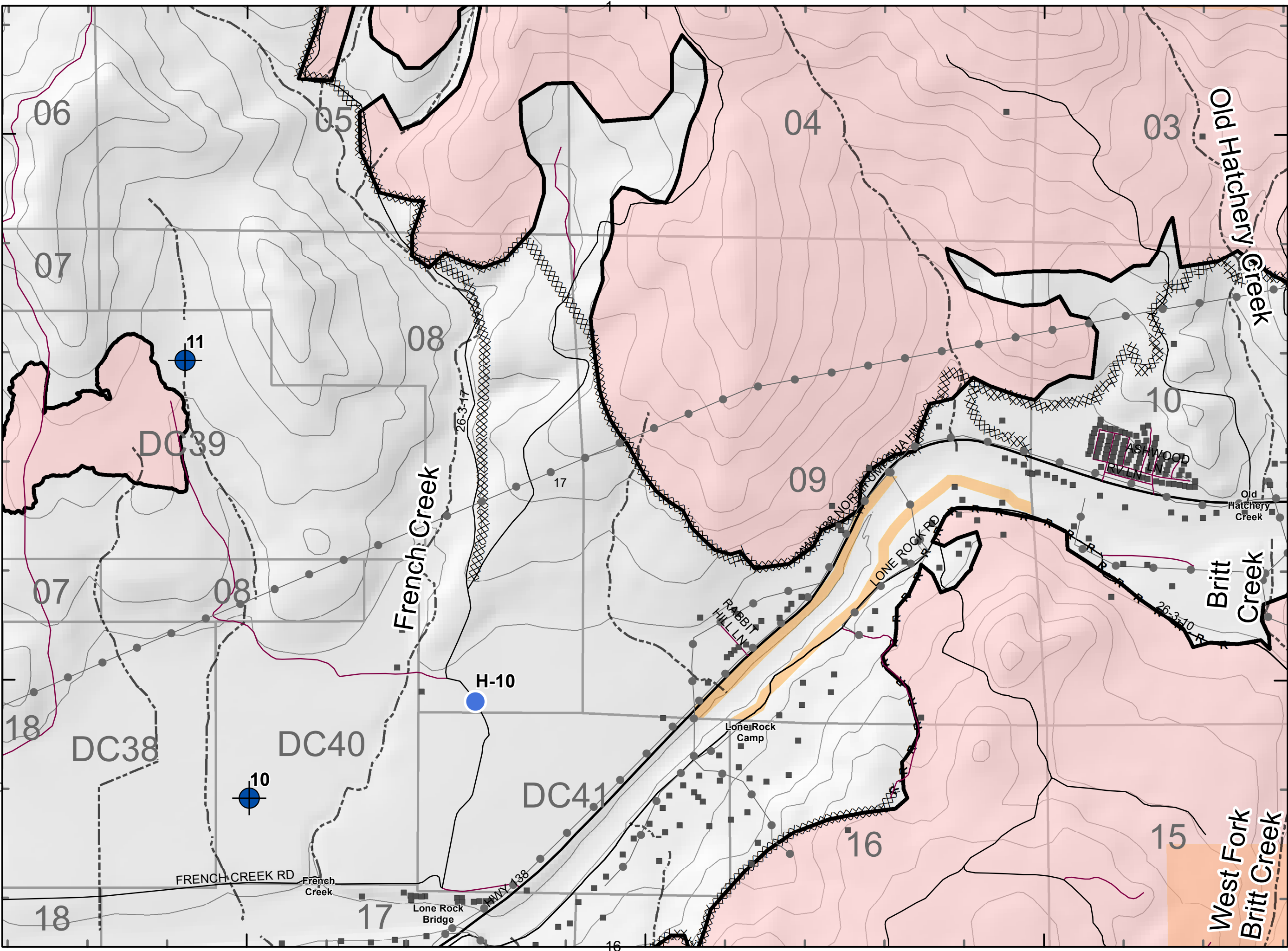
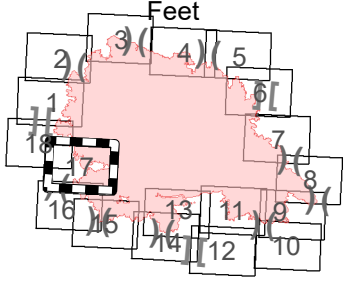
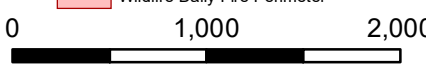
123°4'W



# IAP Map

Archie Creek Fire  
OR-UPF-000436  
9/30/2020 0600 - 2000hrs  
131,542 Acres  
Map Page: 17  
Div W

- Residence
- Roads
- Streams
- Airstrip or Airport
- Camp
- Closure
- Dip Site
- Drop Point
- Fire Origin
- Hazard Tree
- Helispot
- Internet Access
- Landing or Log Deck
- Lookout
- Mobile Weather Unit
- Repeater
- Safety Zone
- Spot Fire
- Staging Area
- Restricted Water Source
- Water Development or Draft Site
- Value at Risk
- Division Break
- Branch Break
- Uncontrolled Fire Edge
- Contained Line
- Completed Dozer Line
- Completed Hand Line
- Road as Completed Line
- Access or Improved Road
- Completed Burnout
- Planned Fire Line
- Planned Secondary Line
- Temporary Flight Restriction
- Road Repair
- Management Action Point
- Wildfire Daily Fire Perimeter



Index Map



# IAP Map

Archie Creek Fire

OR-UPF-000436

9/30/2020 0600 - 2000hrs

131,542 Acres

Map Page: 18

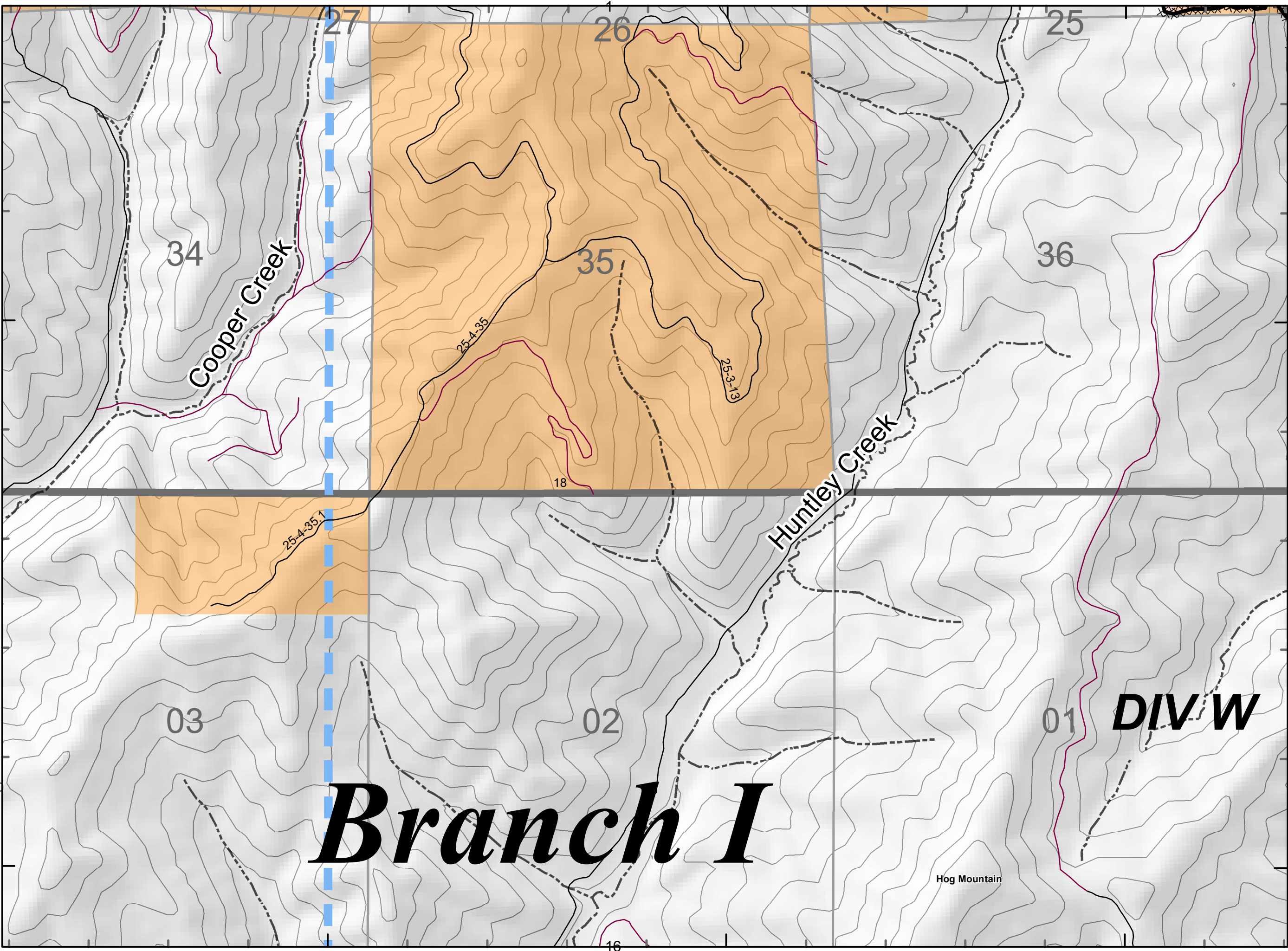
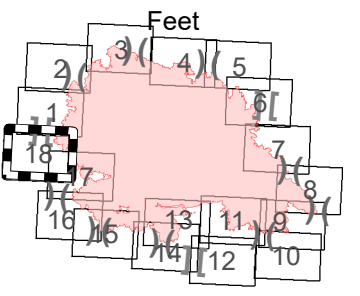
## Div W

- Residence
- Roads
- Streams
- Airstrip or Airport
- Camp
- Closure
- Dip Site
- Drop Point
- Fire Origin
- Hazard Tree
- Helispot
- Internet Access
- Landing or Log Deck
- Lookout
- Mobile Weather Unit
- Repeater
- Safety Zone
- Spot Fire
- Staging Area
- Restricted Water Source
- Water Development or Draft Site
- Value at Risk
- Division Break
- Branch Break
- Uncontrolled Fire Edge
- Contained Line
- Completed Dozer Line
- Completed Hand Line
- Road as Completed Line
- Access or Improved Road
- Completed Burnout
- Planned Fire Line
- Planned Secondary Line
- Temporary Flight Restriction
- Road Repair
- Management Action Point
- Wildfire Daily Fire Perimeter



43°21'N

0 1,000 2,000



# Branch I

## DIV W

123°9'W

16

123°8'W

123°7'W

43°20'N