

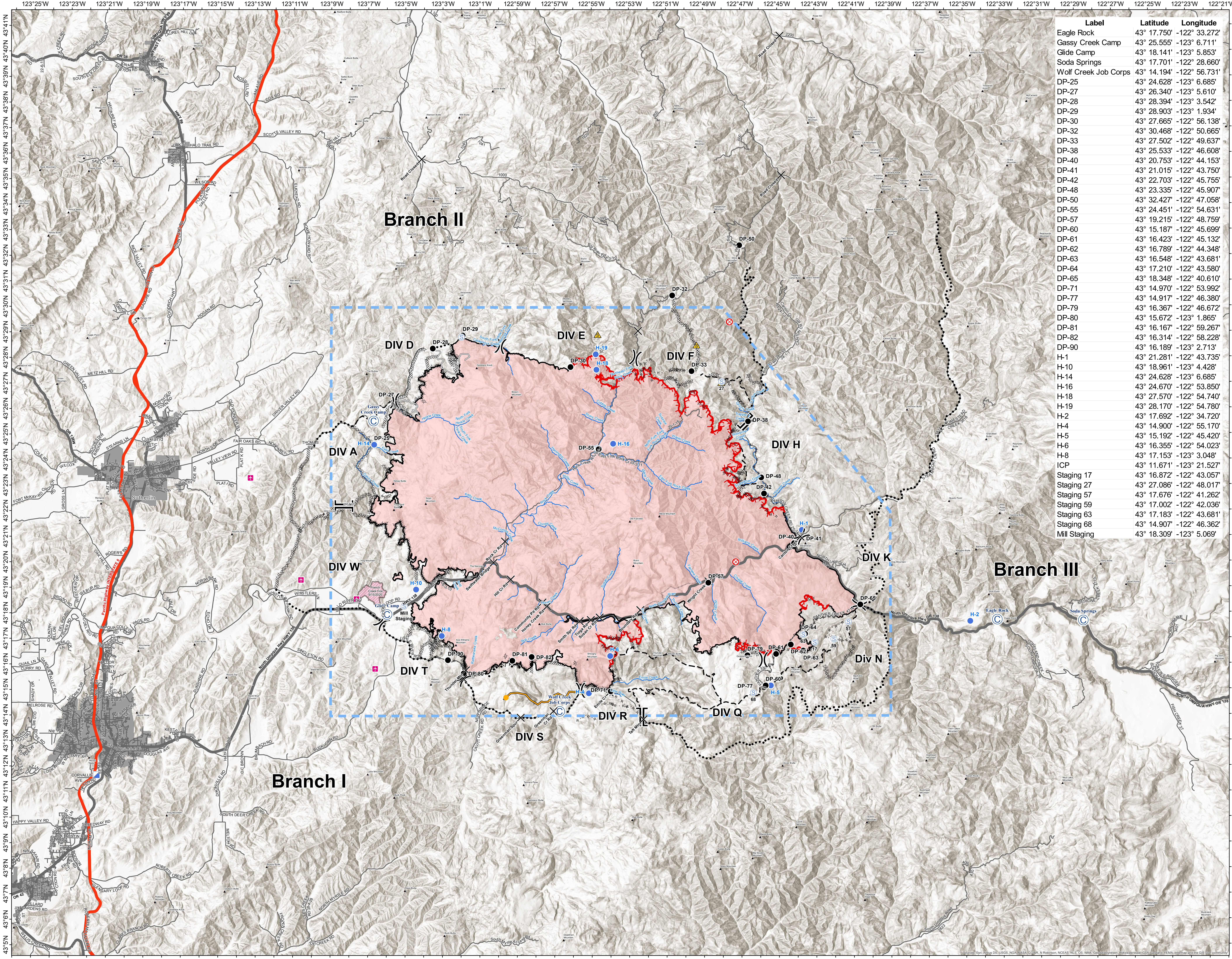
Archie Creek Fire
OR-JPF-000346
09/30/2020



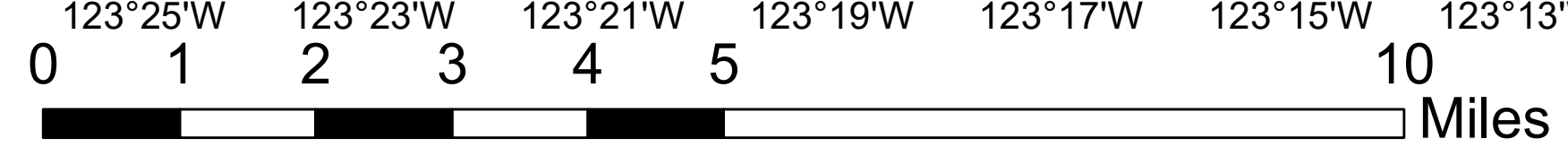
Transportation
Map
131,542 Acres

- Airstrip or Airport
- Camp
- Closure
- Drop Point
- Fire Origin
- Helispot
- Incident Command Post
- Safety Zone
- Staging Area
- Division Break
- Branch Break
- Small Cities & Towns
- Uncontrolled Fire Edge
- Contained Line
- Completed Dozer Line
- Completed Hand Line
- Road as Completed Line
- Access or Improved Road
- Completed Burnout
- Planned Fire Line
- Planned Secondary Line
- Temporary Flight Restriction
- Road Repair
- Management Action Point
- Interstate
- Intermediate
- Paved
- Other Fires
- Cities & Towns
- Streams
- Wildfire Daily Fire Perimeter

Label	Latitude	Longitude
Eagle Rock	43° 17.750'	-122° 33.272'
Gassy Creek Camp	43° 25.555'	-123° 6.711'
Glide Camp	43° 18.141'	-123° 5.853'
Soda Springs	43° 17.701'	-122° 28.660'
Wolf Creek Job Corps	43° 14.194'	-122° 56.731'
DP-25	43° 24.628'	-123° 6.685'
DP-27	43° 26.340'	-123° 5.610'
DP-28	43° 28.394'	-123° 3.542'
DP-29	43° 28.903'	-123° 1.934'
DP-30	43° 27.665'	-122° 56.138'
DP-32	43° 30.468'	-122° 50.665'
DP-33	43° 27.502'	-122° 49.637'
DP-38	43° 25.533'	-122° 46.608'
DP-40	43° 20.753'	-122° 44.153'
DP-41	43° 21.015'	-122° 43.750'
DP-42	43° 22.703'	-122° 45.755'
DP-48	43° 23.335'	-122° 45.907'
DP-50	43° 32.427'	-122° 47.058'
DP-55	43° 24.451'	-122° 54.631'
DP-57	43° 19.215'	-122° 48.759'
DP-60	43° 15.187'	-122° 45.699'
DP-61	43° 16.423'	-122° 45.132'
DP-62	43° 16.789'	-122° 44.348'
DP-63	43° 16.548'	-122° 43.681'
DP-64	43° 17.210'	-122° 43.580'
DP-65	43° 18.348'	-122° 40.610'
DP-71	43° 14.970'	-122° 53.992'
DP-77	43° 14.917'	-122° 46.380'
DP-79	43° 16.367'	-122° 46.672'
DP-80	43° 15.672'	-123° 1.865'
DP-81	43° 16.167'	-122° 59.267'
DP-82	43° 16.314'	-122° 58.228'
DP-90	43° 16.189'	-123° 2.713'
H-1	43° 21.281'	-122° 43.735'
H-10	43° 18.961'	-123° 4.428'
H-14	43° 24.628'	-123° 6.685'
H-16	43° 24.670'	-122° 53.850'
H-18	43° 27.570'	-122° 54.740'
H-19	43° 28.170'	-122° 54.780'
H-2	43° 17.692'	-122° 34.720'
H-4	43° 14.900'	-122° 55.170'
H-5	43° 15.192'	-122° 45.420'
H-6	43° 16.355'	-122° 54.023'
H-8	43° 17.153'	-123° 3.048'
ICP	43° 11.671'	-123° 21.527'
Staging 17	43° 16.872'	-122° 43.057'
Staging 27	43° 27.086'	-122° 48.017'
Staging 57	43° 17.676'	-122° 41.262'
Staging 59	43° 17.002'	-122° 42.036'
Staging 63	43° 17.183'	-122° 43.681'
Staging 68	43° 14.907'	-122° 46.362'
Mill Staging	43° 18.309'	-123° 5.069'



9/29/2020 @ 2023
NAD 1983 UTM Zone 10N
SA Red Team GIS
Latest Intel:
20200928 @ 1919



Branch II

Branch III

Branch I

DIV D

DIV E

DIV F

DIV H

DIV A

DIV W

DIV K

DIV T

DIV S

DIV R

DIV Q

Div N