

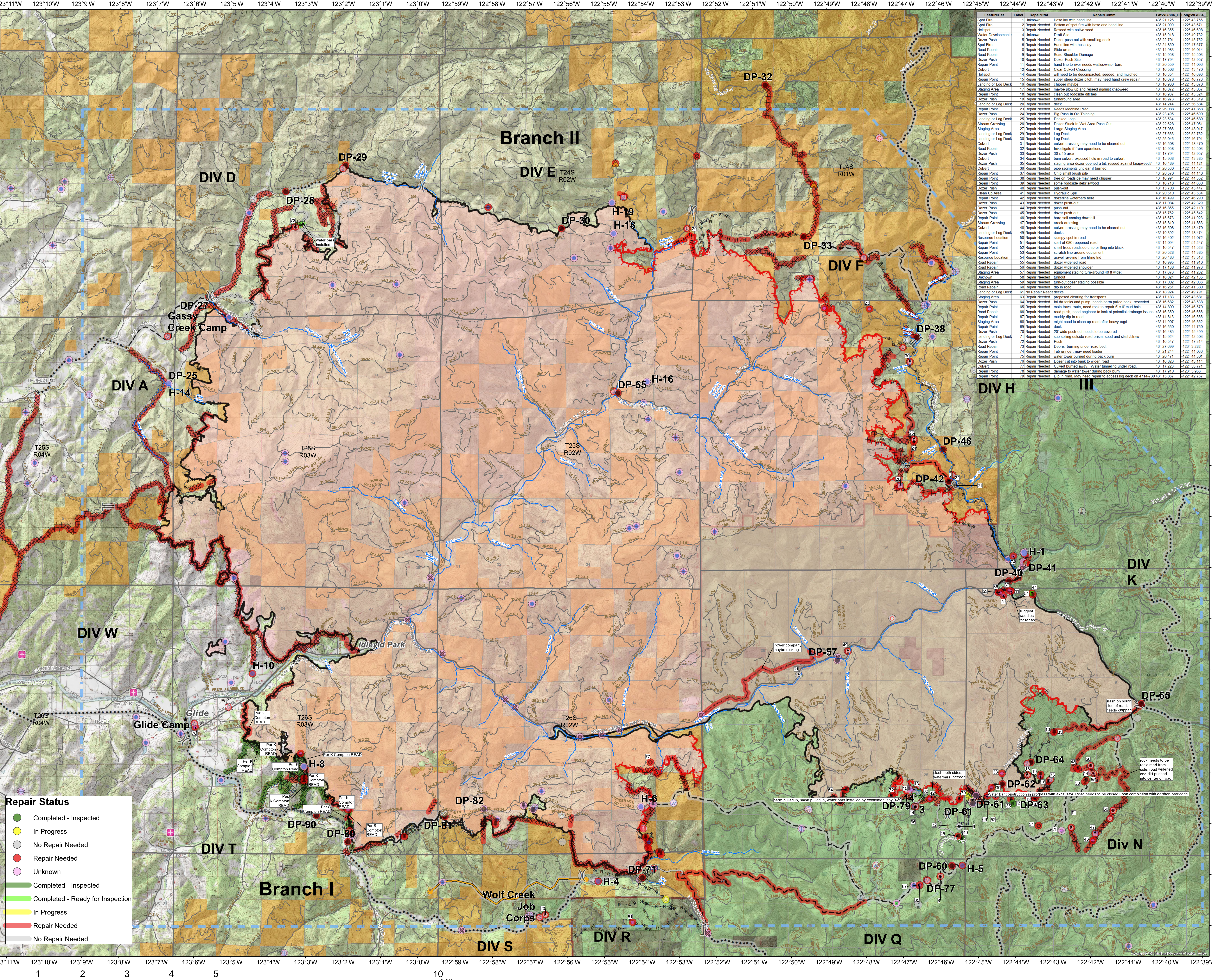
**Archie Creek
OR-UPF-000436
10/01/20**

**Suppression Repair
Map**

131,542 Acres



- Airstrip or Airport
- Camp
- Clean Up Area
- Closure
- Culvert
- Dip Site
- Drop Point
- Dozer Push
- Fence - Cut/Damaged
- Fire Origin
- Hazard Tree
- Helipad
- Internet Access
- Landmark
- Landing or Log Deck
- Lookout
- Mobile Weather Unit
- Repair Point
- Repeater
- Resource Location
- Road Repair
- Safety Zone
- Staging Area
- Stream Crossing
- Water Source
- Restricted Water Source
- Potential Draft Site
- Value at Risk
- Unknown
- Division Break
- Branch Break
- Uncontrolled Fire Edge
- Contained Line
- Completed Dozer Line
- Completed Hand Line
- Road as Completed Line
- Access or Improved Road
- Completed Burnout
- Planned Fire Line
- Planned Secondary Line
- Temporary Flight Restriction
- Road Repair
- Management Action Point



Feature/Cat	Label	Repair Start	RepairComm	Long/WGS84
Spot Fire	1	Unknown	Hose lay with hand line	43° 21' 120"
Spot Fire	2	Repair Needed	Bottom of spot fire with hose and hand line	43° 21' 099"
Water Development	4	Unknown	Runout with water seed	43° 15' 918"
Water Development	4	Unknown	Draft Site	43° 15' 918"
Dozer Push	5	Repair Needed	Dozer push out with small log deck	43° 22' 701"
Dozer Push	5	Repair Needed	Hand line with hose lay	43° 22' 701"
Road Repair	8	Repair Needed	Slide area	43° 14' 958"
Road Repair	9	Repair Needed	Road Shoulder Damage	43° 15' 958"
Dozer Push	10	Repair Needed	Dozer push Site	43° 17' 947"
Repair Point	11	Repair Needed	hand line to river needs water/water bars	43° 20' 559"
Culvert	12	Repair Needed	Clear Culvert Crossing	43° 16' 508"
Helipad	14	Repair Needed	will need to be disconnected, seeded, and mulched	43° 18' 958"
Repair Point	15	Repair Needed	super steep dozer patch, may need hand crew repair	43° 18' 678"
Landing or Log Deck	16	Repair Needed	chipper maybe	43° 16' 900"
Staging Area	17	Repair Needed	may be slow up and reseed against knapweed	43° 18' 958"
Repair Point	18	Repair Needed	clean out roadside ditches	43° 18' 937"
Dozer Push	19	Repair Needed	burnaround area	43° 16' 971"
Landing or Log Deck	20	Repair Needed	Deck	43° 14' 944"
Repair Point	21	Repair Needed	Needs Machine Piled	43° 26' 088"
Dozer Push	24	Repair Needed	Big Push in Old Thinning	43° 23' 498"
Landing or Log Deck	25	Repair Needed	Decayed LOG	43° 23' 498"
Stream Crossing	26	Repair Needed	Dozer Stuck in Wet Area Push Out	43° 22' 628"
Staging Area	27	Repair Needed	Large Staging Area	43° 27' 088"
Landing or Log Deck	29	Repair Needed	Log Deck	43° 27' 663"
Landing or Log Deck	30	Repair Needed	Log Deck	43° 25' 048"
Culvert	31	Repair Needed	Culvert crossing may need to be cleared out	43° 18' 958"
Road Repair	32	Repair Needed	Investigate if from operations	43° 15' 958"
Dozer Push	33	Repair Needed	30 x 15 area	43° 17' 794"
Culvert	34	Repair Needed	cut culvert, exposed hole in road to culvert	43° 11' 747"
Dozer Push	35	Repair Needed	staging area dozer opened a bit, reseed against knapweed	43° 18' 489"
Culvert	36	Repair Needed	pipe segments unclear if burned	43° 20' 530"
Repair Point	37	Repair Needed	Chip small brush pile	43° 18' 958"
Repair Point	38	Repair Needed	tree on roadside may need chipper	43° 18' 994"
Repair Point	39	Repair Needed	some roadside debris/wood	43° 18' 718"
Repair Point	40	Repair Needed	Chip small brush pile	43° 18' 958"
Clean Up Area	41	Repair Needed	Hydraulic Spill	43° 20' 510"
Repair Point	42	Repair Needed	dozerline waterbars here	43° 18' 499"
Dozer Push	43	Repair Needed	dozer push-out	43° 18' 958"
Dozer Push	44	Repair Needed	push-out	43° 18' 859"
Dozer Push	45	Repair Needed	dozer push-out	43° 15' 762"
Repair Point	46	Repair Needed	burn out coming downhill	43° 18' 958"
Stream Crossing	47	Repair Needed	stream crossing	43° 15' 810"
Culvert	48	Repair Needed	Culvert crossing may need to be cleared out	43° 18' 958"
Culvert	49	Repair Needed	Culvert crossing may need to be cleared out	43° 18' 958"
Resource Location	50	Repair Needed	slumpy spot on road	43° 18' 402"
Repair Point	51	Repair Needed	start of 083 roped road	43° 14' 094"
Repair Point	52	Repair Needed	small trees roadside chip or ring into black	43° 18' 247"
Repair Point	53	Repair Needed	scratch line around equipment	43° 20' 528"
Resource Location	54	Repair Needed	gravel raveling from filling pit	43° 20' 498"
Road Repair	55	Repair Needed	dozer widened road	43° 18' 958"
Road Repair	56	Repair Needed	dozer widened shoulder	43° 17' 138"
Staging Area	57	Repair Needed	equipment staging turn-around 40 ft wide	43° 11' 876"
Unknown	58	Repair Needed	turnout	43° 18' 958"
Staging Area	59	Repair Needed	burn-out dozer staging possible	43° 17' 002"
Repair Point	60	Repair Needed	dip in road	43° 18' 261"
Landing or Log Deck	61	Repair Needed	dip in road	43° 18' 924"
Staging Area	63	Repair Needed	proposed clearing for transports	43° 17' 183"
Dozer Push	64	Repair Needed	fat doze tank and pump, needs beam pulled back, reseeded	43° 18' 668"
Repair Point	65	Repair Needed	main travel route, needs rock to repair 6' x 6' mud hole	43° 14' 809"
Road Repair	66	Repair Needed	road push, need engineer to look at potential drainage issues	43° 18' 350"
Repair Point	67	Repair Needed	muddy dip in road	43° 14' 819"
Staging Area	68	Repair Needed	might need to clean up road after heavy eqpt	43° 14' 907"
Repair Point	69	Repair Needed	deck	43° 18' 550"
Dozer Push	70	Repair Needed	sub soiling outside road prism, seed and slash/straw	43° 15' 924"
Landing or Log Deck	71	Repair Needed	Push	43° 18' 547"
Road Repair	72	Repair Needed	Ditches, burning under road, seed	43° 21' 699"
Repair Point	73	Repair Needed	Tab grinder, may need loader	43° 21' 244"
Repair Point	74	Repair Needed	water tower burned during back burn	43° 20' 471"
Repair Point	75	Repair Needed	Dozer cut into bank to widen road	43° 18' 608"
Culvert	77	Repair Needed	Culvert burned away. Water turning under road	43° 17' 222"
Repair Point	78	Repair Needed	damage to water tower during back burn	43° 17' 910"
Repair Point	79	Repair Needed	Dip in road. May need repair to access log deck on 4714-704 to 15, 881"	43° 15' 958"

Repair Status

- Completed - Inspected
- In Progress
- No Repair Needed
- Repair Needed
- Unknown

- Completed - Inspected
- Completed - Ready for Inspection
- In Progress
- Repair Needed
- No Repair Needed

9/30/2020 @ 2312
NAD 1983 UTM Zone 10N
SA Red Team GIS
Latest Intel:
20200928 @ 1919 hrs

